





NEW MEXICO OIL CONSERVATION COMMISSION  
WELL LOCATION AND ACREAGE DEDICATION PLAT

Form C-102  
Supersedes C-128  
Effective 1-1-65

All distances must be from the outer boundaries of the Section

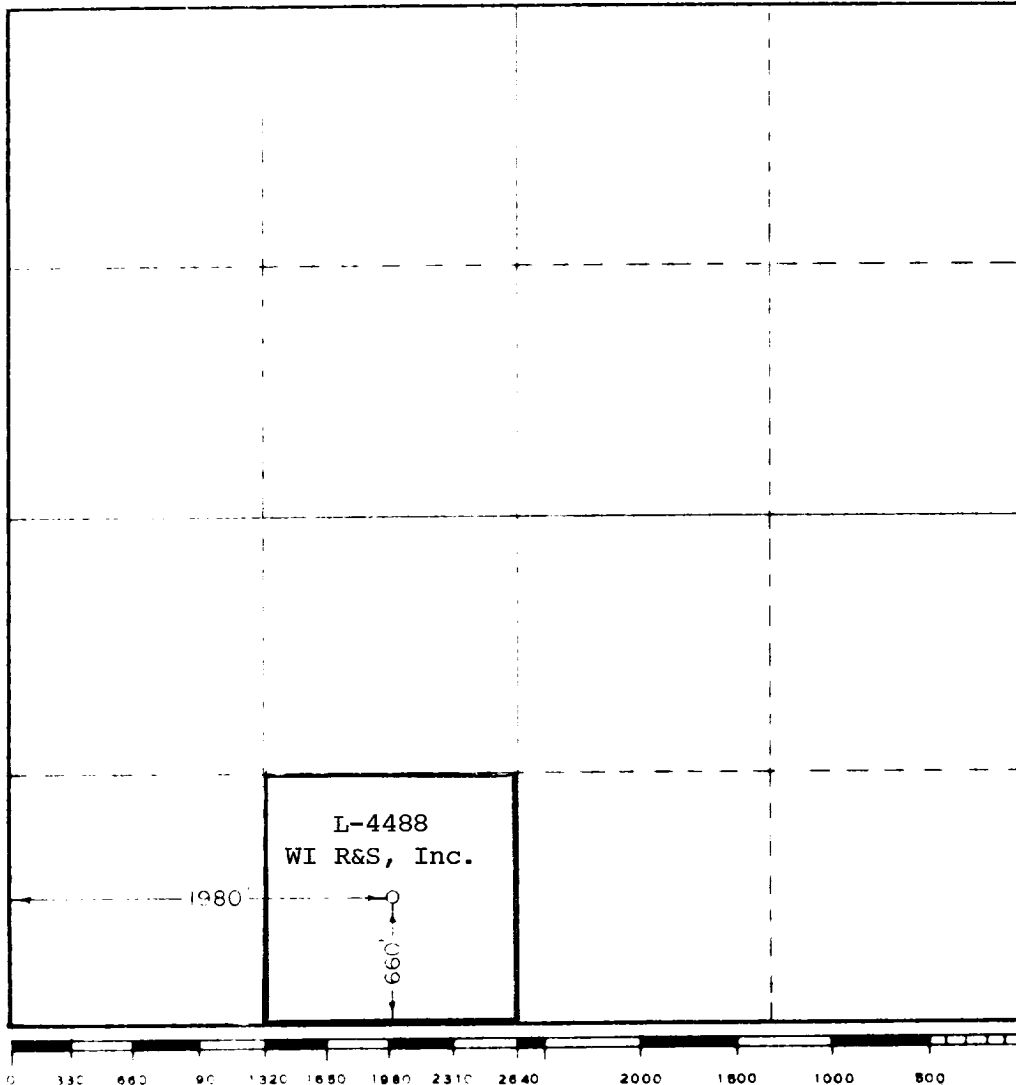
Lessee <b>Read &amp; Stevens, Incorporated</b>			Lease <b>Siete State</b>			Well No. <b>2</b>					
Section <b>N</b>		Range <b>16</b>		Township <b>8 South</b>		Range <b>31 East</b>		County <b>Chaves</b>			
Acres <b>660</b>			feet from the <b>South</b>			line and <b>1980</b>			feet from the <b>West</b>		
Dedicated Acreage <b>4229.3</b>			San Andres			Pool <b>Siete</b>			Dedicated Acreage <b>40.00</b> Acres		

1. Outline the acreage dedicated to the subject well by colored pencil or hachure marks on the plat below.
2. If more than one lease is dedicated to the well, outline each and identify the ownership thereof (both as to working interest and royalty).
3. If more than one lease of different ownership is dedicated to the well, have the interests of all owners been consolidated by communitization, unitization, force-pooling, etc?

Yes ☐ No ☐ If answer is "yes," type of consolidation \_\_\_\_\_

If answer is "no" list the owners and tract descriptions which have actually been consolidated. (Use reverse side of this form if necessary) \_\_\_\_\_

No allowable will be assigned to the well until all interests have been consolidated (by communitization, unitization, forced-pooling, or otherwise) or until a non-standard unit, eliminating such interests, has been approved by the Commission.



CERTIFICATION

I hereby certify that the information contained herein is true and complete to the best of my knowledge and belief.

*Norman L. Stevens, Jr.*

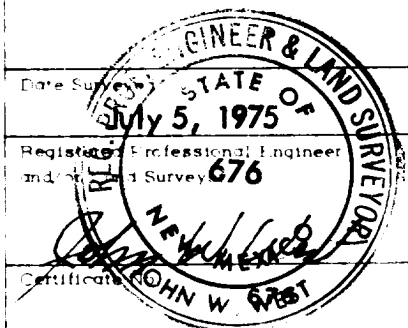
Norman L. Stevens, Jr.

Agent

Read & Stevens, Inc.

July 9, 1975

I hereby certify that the well location shown on this plat was plotted from field notes of actual surveys made by me or under my supervision, and that the same is true and correct to the best of my knowledge and belief.





1. OF COPIES RECEIVED		
DISTRIBUTION		
SANTA FE		
FILE		
U.S.G.S.		
LAND OFFICE		
OPERATOR		

NEW MEXICO OIL CONSERVATION COMMISSION

Form C-103  
Supersedes Old  
C-102 and C-103  
Effective 1-1-65

5a. Indicate Type of Lease
State <input checked="" type="checkbox"/> Fee <input type="checkbox"/>
5. State Oil & Gas Lease No.
L-4488

SUNDRY NOTICES AND REPORTS ON WELLS

(DO NOT USE THIS FORM FOR PROPOSALS TO DRILL OR TO DEEPEN OR PLUG BACK TO A DIFFERENT RESERVOIR. USE "APPLICATION FOR PERMIT -" (FORM C-101) FOR SUCH PROPOSALS.)

1. OIL WELL <input checked="" type="checkbox"/> GAS WELL <input type="checkbox"/> OTHER <input type="checkbox"/>	7. Unit Agreement Name
2. Name of Operator	8. Farm or Lease Name
Read & Stevens, Inc.	Siete
3. Address of Operator	9. Well No.
P.O. Box 2126, Roswell, New Mexico 88201	2
4. Location of Well	10. Field and Pool, or Wildcat
UNIT LETTER <u>N</u> , <u>660</u> FEET FROM THE <u>South</u> LINE AND <u>1980</u> FEET FROM	Siete
THE <u>West</u> LINE, SECTION <u>16</u> , TOWNSHIP <u>8S</u> , RANGE <u>31E</u> NMPM.	
15. Elevation (Show whether DF, RT, GR, etc.)	12. County
4229.3'	Chaves

Check Appropriate Box To Indicate Nature of Notice, Report or Other Data

NOTICE OF INTENTION TO:

PERFORM REMEDIAL WORK <input type="checkbox"/>	PLUG AND ABANDON <input type="checkbox"/>
TEMPORARILY ABANDON <input type="checkbox"/>	CHANGE PLANS <input type="checkbox"/>
PULL OR ALTER CASING <input type="checkbox"/>	OTHER <u>Blowout Preventor Procedure</u> <input type="checkbox"/>

SUBSEQUENT REPORT OF:

REMEDIAL WORK <input type="checkbox"/>	ALTERING CASING <input type="checkbox"/>
COMMENCE DRILLING OPNS. <input type="checkbox"/>	PLUG AND ABANDONMENT <input type="checkbox"/>
CASING TEST AND CEMENT JOBS <input type="checkbox"/>	
OTHER <input type="checkbox"/>	

17. Describe Proposed or Completed Operations (Clearly state all pertinent details, and give pertinent dates, including estimated date of starting any proposed work) SEE RULE 1703.

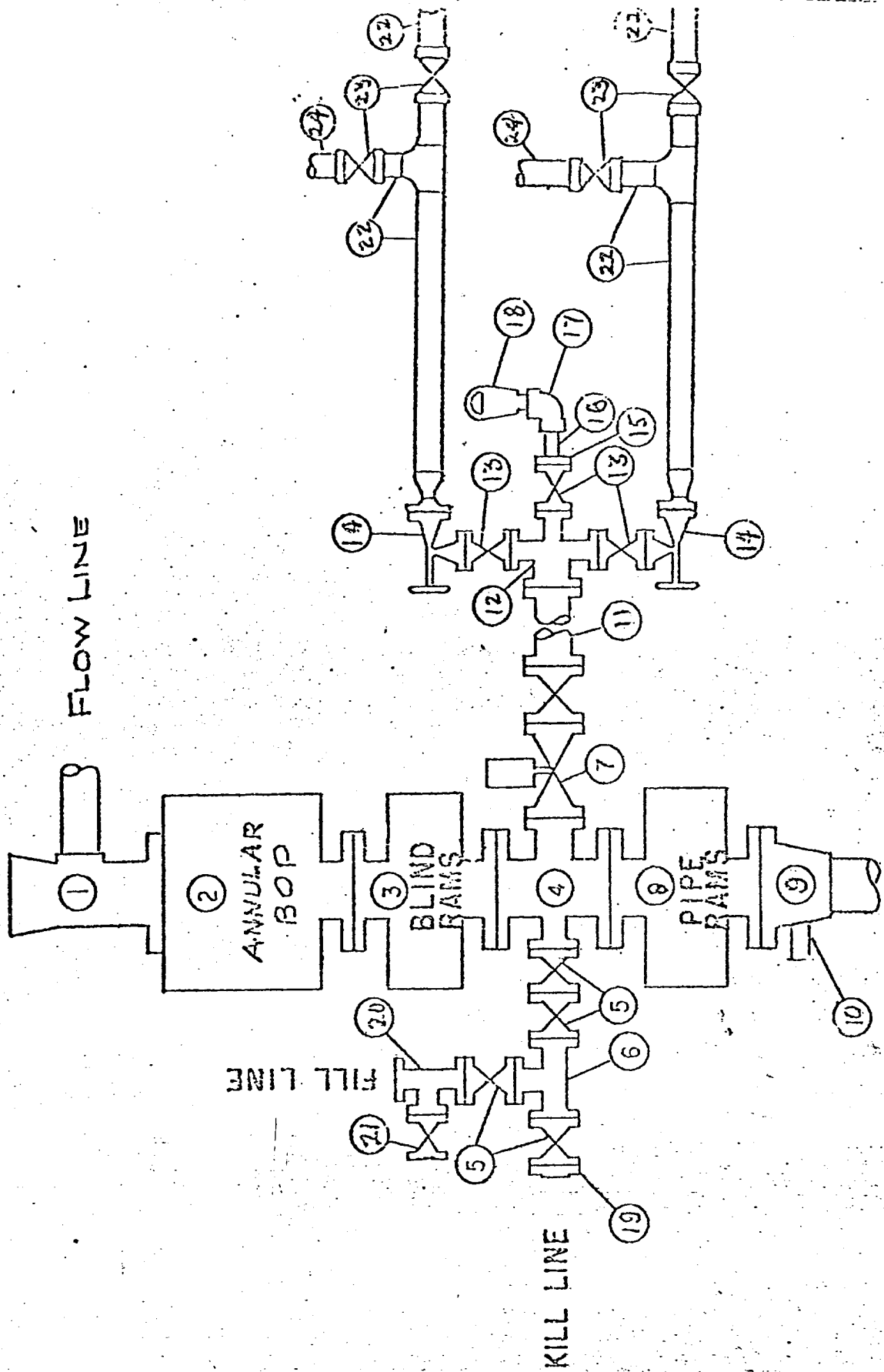
For blowout prevention specifications and procedures see the attached for WEK Drilling Co., Inc. - Rig #2

18. I hereby certify that the information above is true and complete to the best of my knowledge and belief.

SIGNED <u>[Signature]</u>	TITLE <u>Agent</u>	DATE <u>7/11/75</u>
APPROVED BY <u>[Signature]</u>	TITLE <u>OIL &amp; GAS</u>	DATE <u>JUL 14 1975</u>
CONDITIONS OF APPROVAL, IF ANY:		

100 14 000

WEK DRILLING CO., INC. - Rig 2  
**BLOWOUT PREVENTER SPECIFICATION**



6/15/74





WEK      LLING CO., INC.      -      RIG 2  
EQUIPMENT DESCRIPTION

All equipment should be at least 3,000 psi WP or higher unless otherwise specified.

1. Bell nipple.
2. Hydril bag type preventer
3. Ram type pressure operated blowout preventer with blind rams.
4. Flanged spool with one 3-inch and one 2-inch (minimum) outlet.
5. 2-inch (minimum) flanged plug or gate valve.
6. 2-inch by 2-inch by 2-inch (minimum) flanged tee.
7. 3-inch gate valve.
8. Ram type pressure operated blowout preventer with pipe rams.
9. Flanged type casing head with one side outlet.
10. 2-inch threaded (or flanged) plug or gate valve.  
Flanged on 5000# WP, threaded on 3000# WP or less.
11. 3-inch flanged spacer spool.
12. 3-inch by 2-inch by 2-inch by 2-inch flanged cross.
13. 2-inch flanged plug or gate valve.
14. 2-inch flanged adjustable choke.
15. 2-inch threaded flange.
16. 2-inch XXH nipple.
17. 2-inch forged steel 90° Ell.
18. Cameron (or equal.) threaded pressure gage.
19. Threaded flange.
20. 2-inch flanged tee.
21. 2-inch flanged plug or gate valve.
22. 2½-inch pipe, 300' to pit, anchored.
23. 2½-inch SE valve.
24. 2½-inch line to steel pit or separator.

NOTES:

1. Items 3, 4 and 8 may be replaced with double ram type preventer with side outlets between the rams.
2. The two valves next to the stack on the fill and kill line to be closed unless drill string is being pulled.
3. Kill line is for emergency use only. This connection shall not be used for filling.
4. Replacement pipe rams and blind rams shall be on location at all times.
5. Only type U, LSW and QRC ram type preventers with secondary seals are acceptable for 5000 psi WP and higher BOP stacks.
6. Type E ram-type BOP's with factory modified side outlets may be used on 3000 psi or lower WP BOP stacks.

11