

3000703

NEW MEXICO OIL CONSERVATION COMMISSION

Form C-101
Revised 1-1-65

NO. OF COPIES RECEIVED		
DISTRIBUTION		
SANTA FE		
FILE		
U.S.G.S.		
LAND OFFICE		
OPERATOR		

5A. Indicate Type of Lease
STATE FEE

5. State Oil & Gas Lease No.
K-5144

APPLICATION FOR PERMIT TO DRILL, DEEPEN, OR PLUG BACK

1a. Type of Work
b. Type of Well
DRILL DEEPEN PLUG BACK
OIL WELL GAS WELL OTHER SINGLE ZONE MULTIPLE ZONE

7. Unit Agreement Name

8. Farm or Lease Name
State 5-8-33

9. Well No.
6

2. Name of Operator
Champlin Petroleum Company

10. Field and Pool, or Wildcat
Chaveroo-San Andres

3. Address of Operator
701 Wilco Building Midland, Texas 79701

4. Location of Well
UNIT LETTER H LOCATED 1980 FEET FROM THE North LINE
AND 660 FEET FROM THE East LINE OF SEC. 5 TWP. 8-S RGE. 33-E NMPM

12. County
Chaves

19. Proposed Depth 4600'
19A. Formation San Andres
20. Rotary or C.T. Rotary

21. Elevations (Show whether DF, RT, etc.) 4460 GR (est.)
21A. Kind & Status Plug. Bond Statewide Blanket Drilling Bond \$25,000
21B. Drilling Contractor Sitton & Norton
22. Approx. Date Work will start May 15, 1976

23. PROPOSED CASING AND CEMENT PROGRAM

SIZE OF HOLE	SIZE OF CASING	WEIGHT PER FOOT	SETTING DEPTH	SACKS OF CEMENT	EST. TOP
11"	8-5/8"	24#	375'	250	Surface
7-7/8"	4-1/2"	10.5#	4600'	200	

Drill 11" hole to 375'. Run 8-5/8" and cement w/250 sacks or enough to circulate cement to surface. WOC 18 hrs. Install BOP stack and test casing to 600 psi for 30 minutes. Drill 7-7/8" hole to 4600' (TD). Run 4-1/2" casing to 4600' and cement w/200 sacks 50-50 pozmix. Casing will be centralized and Ruff-Coated throughout pay zones. Pressure test 4-1/2" casing to 1000# for 30 minutes. BOP stack to consist of a double hydraulic with blind and pipe rams

FOR 30 DAYS UNLESS
DRILLING COMMENCED,
EXPIRES 8-15-76

IN ABOVE SPACE DESCRIBE PROPOSED PROGRAM: IF PROPOSAL IS TO DEEPEN OR PLUG BACK, GIVE DATA ON PRESENT PRODUCTIVE ZONE AND PROPOSED NEW PRODUCTIVE ZONE. GIVE BLOWOUT PREVENTER PROGRAM, IF ANY.

I hereby certify that the information above is true and complete to the best of my knowledge and belief.
Signed Walter J. Randolph Title District Clerk Date May 3, 1976

(This space for State Use)
APPROVED BY [Signature] TITLE SUPERVISOR DISTRICT I DATE [Signature]

CONDITIONS OF APPROVAL, IF ANY: EITHER THE SURFACE CASING MUST BE SET TO THE TOP OF THE ANHYDRITE AND CEMENTED BACK TO THE SURFACE, OR THE LONG STRING MUST BE CEMENTED BACK TO THE SURFACE FROM THE TOP OF THE ANHYDRITE.

**NEW MEXICO OIL CONSERVATION COMMISSION
WELL LOCATION AND ACREAGE DEDICATION PLAT**

Form C-102
Supersedes C-128
Effective 1-1-65

All distances must be from the outer boundaries of the Section.

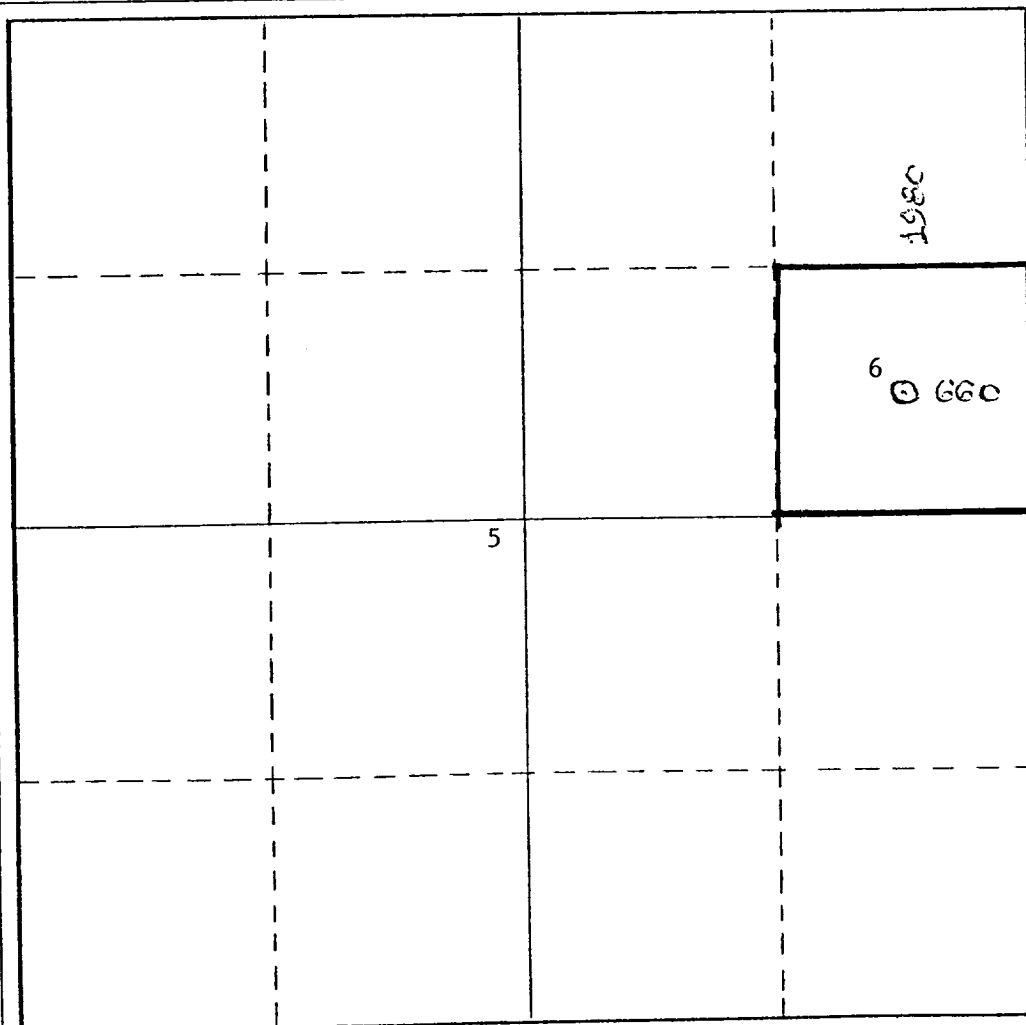
Operator Champlin Petroleum Company			Lease State 5-8-33		Well No. 6
Unit Letter H	Section 5	Township 8-S	Range 33-E	County Chaves	
Actual Footage Location of Well: 1980 feet from the North line and 660 feet from the East line					
Ground Level Elev. 4460 (est.)	Producing Formation San Andres		Pool Chaveroo-San Andres		Dedicated Acreage: 40 Acres

1. Outline the acreage dedicated to the subject well by colored pencil or hachure marks on the plat below.
2. If more than one lease is dedicated to the well, outline each and identify the ownership thereof (both as to working interest and royalty).
3. If more than one lease of different ownership is dedicated to the well, have the interests of all owners been consolidated by communitization, unitization, force-pooling, etc?

Yes No If answer is "yes," type of consolidation _____

If answer is "no," list the owners and tract descriptions which have actually been consolidated. (Use reverse side of this form if necessary.) _____

No allowable will be assigned to the well until all interests have been consolidated (by communitization, unitization, forced-pooling, or otherwise) or until a non-standard unit, eliminating such interests, has been approved by the Commission.



CERTIFICATION

I hereby certify that the information contained herein is true and complete to the best of my knowledge and belief.

Walter M. Randolph
Name

Walter M. Randolph

Position

District Clerk

Company

Champlin Petroleum Company

Date

May 3, 1976

I hereby certify that the well location shown on this plat was plotted from field notes of actual surveys made by me or under my supervision, and that the same is true and correct to the best of my knowledge and belief.

Date Surveyed

4-28-76

Registered Professional Engineer and/or Land Surveyor

Certificate No.

1652

