

UNITED STATES  
DEPARTMENT OF THE INTERIOR  
GEOLOGICAL SURVEY

## APPLICATION FOR PERMIT TO DRILL, DEEPEN, OR PLUG BACK

## 1a. TYPE OF WORK

DRILL ☒DEEPEN ☐PLUG BACK ☐

## b. TYPE OF WELL

OIL  
WELL ☒GAS  
WELL ☐

OTHER

SINGLE  
ZONE ☐MULTIPLE  
ZONE ☐

## 2. NAME OF OPERATOR

Harvey E. Yates Company, Inc.

## 3. ADDRESS OF OPERATOR

Suite 1000, Sec. Nat'l Bank Bldg., Roswell, NM

## 4. LOCATION OF WELL (Report location clearly and in accordance with any State requirements.)\*

At surface

660 FSL &amp; FEL

At proposed prod. zone

same

## 14. DISTANCE IN MILES AND DIRECTION FROM NEAREST TOWN OR POST OFFICE\*

11 miles south of Kenna, New Mexico

## 15. DISTANCE FROM PROPOSED\*

LOCATION TO NEAREST  
PROPERTY OR LEASE LINE, FT.  
(Also to nearest drlg. unit line, if any)

660'

## 16. NO. OF ACRES IN LEASE

40

17. NO. OF ACRES ASSIGNED  
TO THIS WELL

40

18. DISTANCE FROM PROPOSED LOCATION\*  
TO NEAREST WELL, DRILLING, COMPLETED,  
OR APPLIED FOR, ON THIS LEASE, FT.

3000'

## 19. PROPOSED DEPTH

3650

## 20. ROTARY OR CABLE TOOLS

Rotary

## 21. ELEVATIONS (Show whether DF, RT, GR, etc.)

4147.0

## 22. APPROX. DATE WORK WILL START\*

June 3, 1976

## 23.

## PROPOSED CASING AND CEMENTING PROGRAM

SIZE OF HOLE	SIZE OF CASING	WEIGHT PER FOOT	SETTING DEPTH	QUANTITY OF CEMENT
11"	8 5/8"	20#	300'	circulate
7 7/8"	4 1/2"	10.5 #	3650'	225 sx

RECEIVED

MAY 19 1976

U. S. GEOLOGICAL SURVEY  
ARTESIA, NEW MEXICO

IN ABOVE SPACE DESCRIBE PROPOSED PROGRAM: If proposal is to deepen or plug back, give data on present productive zone and proposed new productive zone. If proposal is to drill or deepen directionally, give pertinent data on subsurface locations and measured and true vertical depths. Give blowout preventer program, if any.

## 24.

SIGNED

*Fred Yates*

TITLE

Vice President

DATE

May 15, 1976

(This space for Federal or State office use)

PERMIT NO.

APPROVAL DATE

APPROVED BY  
CONDITIONS OF APPROVAL, IF ANY:

THIS APPROVAL IS RESCINDED IF OPERATIONS  
ARE NOT COMMENCED WITHIN 3 MONTHS.  
EXPIRES SEP 15 1976

DATE

\*See Instructions On Reverse Side

RECEIVED

APR 17 1978

U.S. CONSERVATION COMMISSION  
WASHINGTON, D.C.

NEW MEXICO OIL CONSERVATION COMMISSION  
WELL LOCATION AND ACREAGE DEDICATION PLAT

Form C-102  
Supersedes C-128  
Effective 1-1-65

All distances must be from the outer boundaries of the Section.

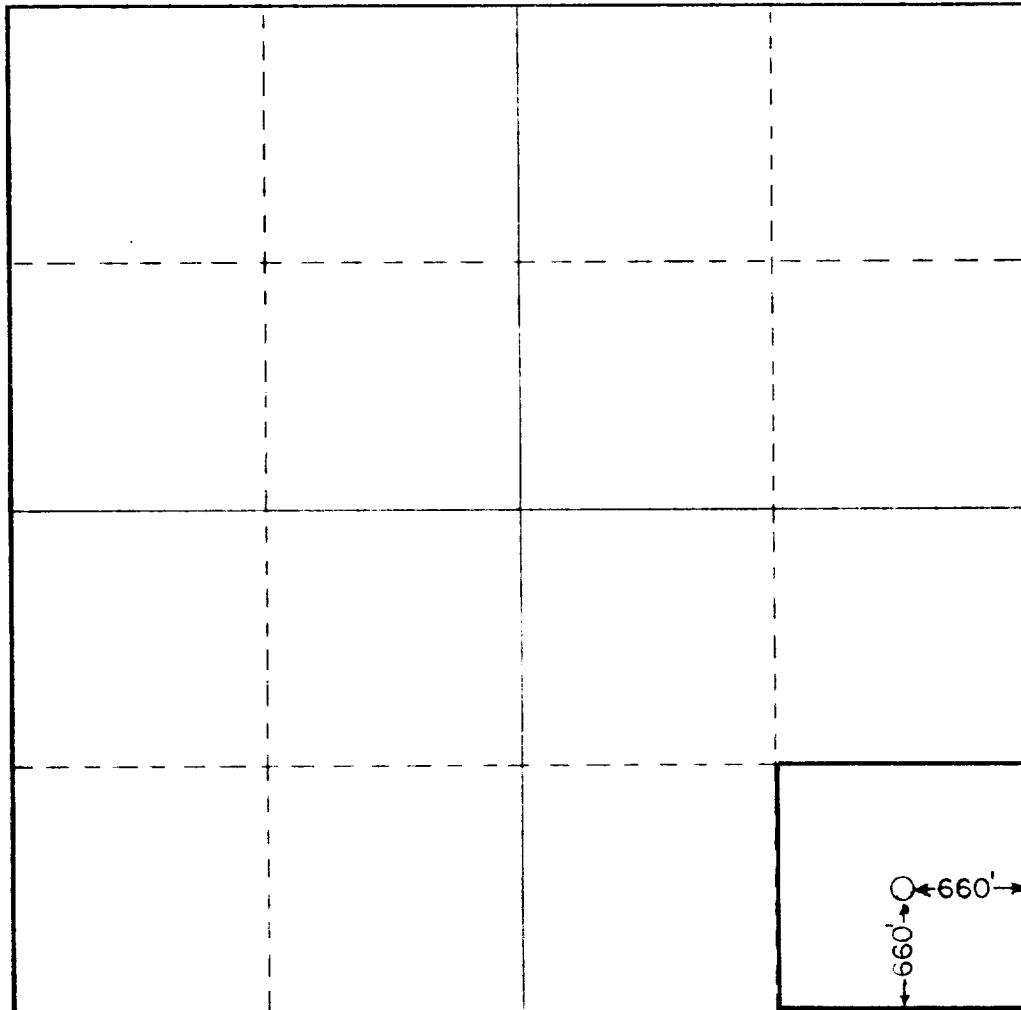
Operator <b>HARVEY YATES COMPANY</b>		Lease <b>MARIE TRUST</b>		Well No. <b>1</b>
Unit Letter <b>"P"</b>	Section <b>35</b>	Township <b>7 South</b>	Range <b>30 East</b>	County <b>Chaves</b>
Actual location of well: <b>660</b> feet from the <b>South</b> line and <b>660</b> feet from the <b>East</b> line				
Ground Level Elev. <b>4147.0</b>	Producing Formation <b>San andrea</b>	Pool <b>Wildcat Cats</b>	Dedicated Acreage: <b>40</b> Acres	

1. Outline the acreage dedicated to the subject well by colored pencil or hachure marks on the plat below.
2. If more than one lease is dedicated to the well, outline each and identify the ownership thereof (both as to working interest and royalty).
3. If more than one lease of different ownership is dedicated to the well, have the interests of all owners been consolidated by communitization, unitization, force-pooling, etc?

☐ Yes ☐ No If answer is "yes," type of consolidation \_\_\_\_\_

If answer is "no," list the owners and tract descriptions which have actually been consolidated. (Use reverse side of this form if necessary.) \_\_\_\_\_

No allowable will be assigned to the well until all interests have been consolidated (by communitization, unitization, forced-pooling, or otherwise) or until a non-standard unit, eliminating such interests, has been approved by the Commission.



CERTIFICATION

I hereby certify that the information contained herein is true and complete to the best of my knowledge and belief.

Fred G. Yates *Fred Yates*

Name

Vice President

Position

Harvey E. Yates Company

Company

May 15, 1976

Date

RECEIVED

MAY 19 1976  
I hereby certify that the well location shown on this plat was plotted from field notes of actual surveys made by me or under my supervision and that the same is true and correct to the best of my knowledge and belief.

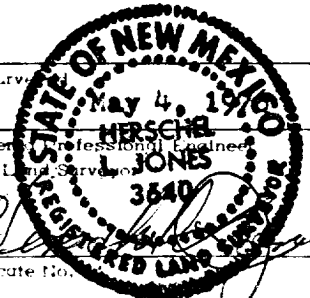
Date Surveyed

May 4, 1976

Registered Professional Engineer and/or Land Surveyor

3640

Certificate No.



RECEIVED

JUL 17 1976

U.S. GOVERNMENT PRINTING OFFICE

Marie Trust #1

Sec 35, T-7S, R-30E

Chaves County

New Mexico

Development plan for surface to accompany, "Applications to Drill Onshore Oil, Gas, or Geothermal Steam Wells on Public Domain and acquired Federal Lands."

1. Existing roads. There is an existing road which enters section 36, T-7S, R-30E from the south approx 1980 FWL and continues north to a well 1980 FNL & FWL Of section 36
2. Planned access roads. Access road would intersect above road at approx 660 FSL & 1980 FWL section 36, and continue approx 2640' to planned location. Road will be 8' wide and 2" compacted caliche.
3. Location of well. 660 FSL & FEL Section 35, T-7S, R-30E
4. Lateral roads to well locations. \_\_\_\_\_
5. Location of tank batteries and flowlines. Exhibit "A"
6. Locations and types of water supply. Commercial Sources
7. Methods for handling waste disposal. Waste disposal pits to be dug deep enough to bury wast 24".
8. Location of camps none
9. Location of airstrips. none
10. Location layout to include position of the rig, mud tanks, reserve pits, burn pits, pipe racks, ect. Exhibit "B"
11. Plans for restoration of the surface. If producing well, pits will be filled and leveled. If dry hole same and location cleaned and leveled.
12. Any other information which the Approving Official considers essential to his assessment of the impact on the environment. \_\_\_\_\_  
\_\_\_\_\_  
\_\_\_\_\_  
\_\_\_\_\_

The affected Federal and State surface managing agencies shall have access to or, if feasible, may be provided with copies of such development plans.

HARVEY E. YATES COMPANY

APPROVED BY:  
U. S. GEOLOGICAL SURVEY

BY: Harvey E. Yates

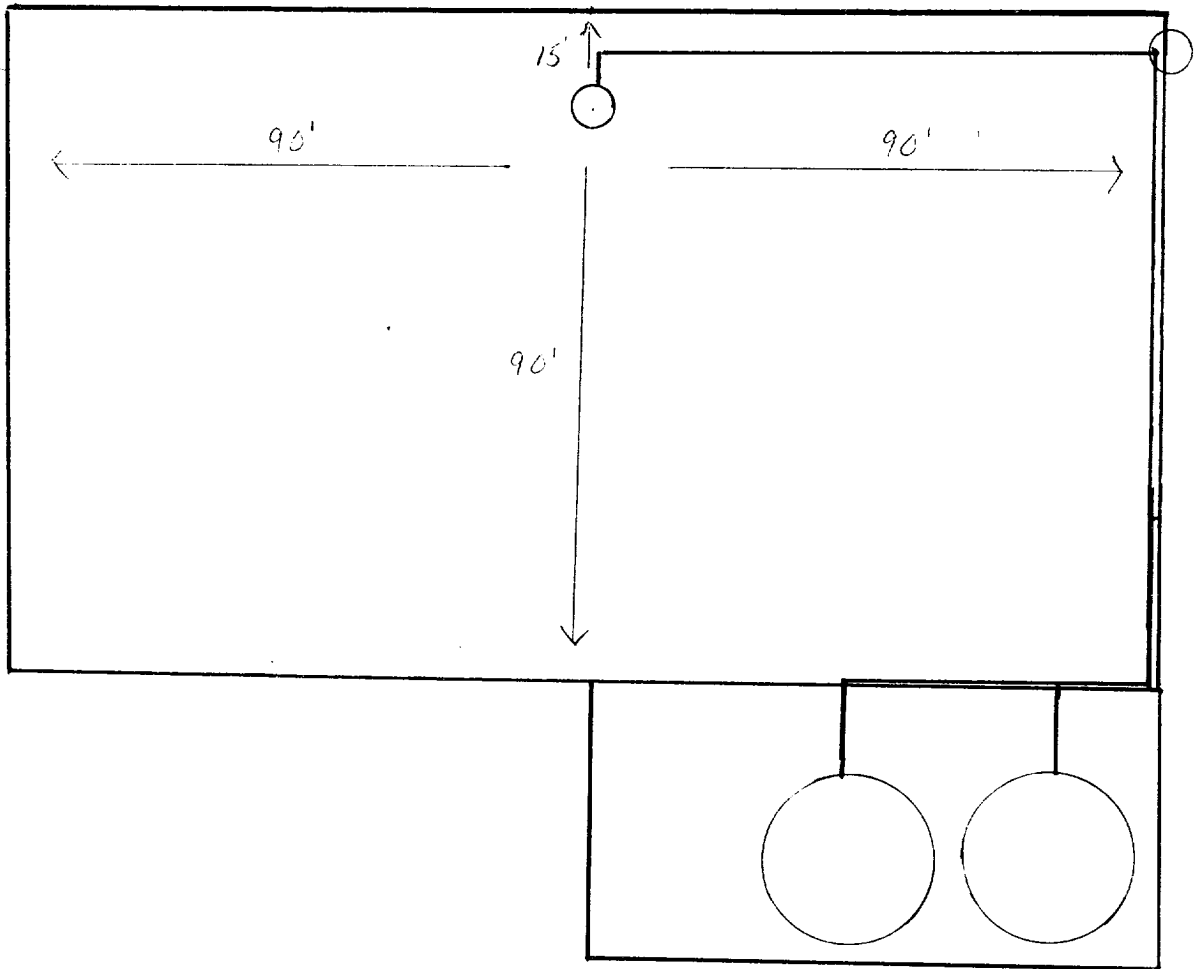
BY: \_\_\_\_\_

RECEIVED

MAY 17 1976

U.S. CONSERVATION COMMISSION  
WASHINGTON, D.C.

EXHIBIT "A"



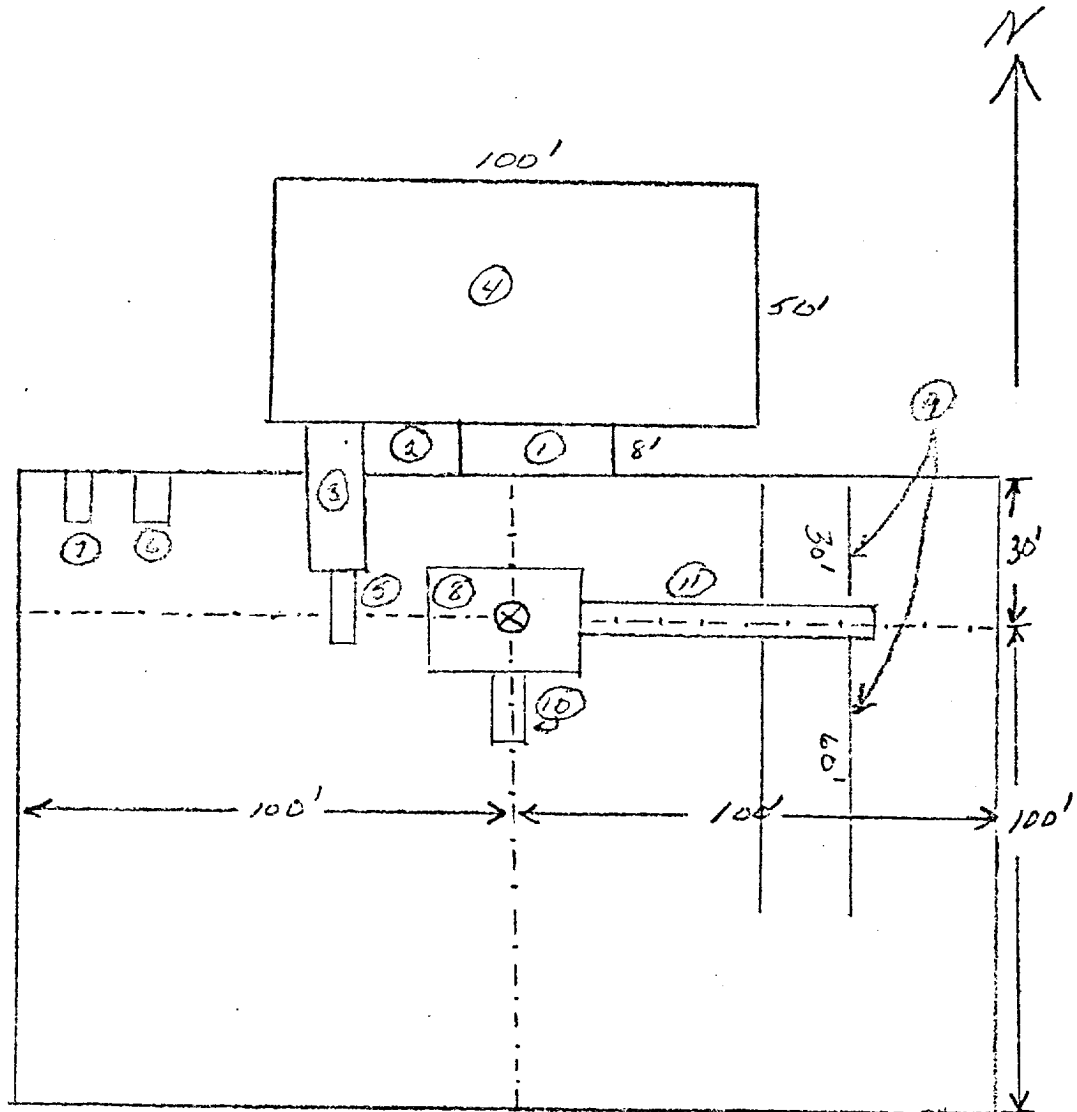
RECEIVED

JUN 17 1976

CONSULTATION COM. 1.  
1976, P. 1.



# EXHIBIT "B"



- |                          |                |
|--------------------------|----------------|
| ① Shale Pit 30' x 8'     | ⑥ Water Tank   |
| ② Mud Pit 20' x 8'       | ⑦ Fuel Tank    |
| ③ Suction Pit 30' x 8'   | ⑧ Rig          |
| ④ Reserve Pit 100' x 50' | ⑨ Pipe Racks   |
| ⑤ Pump                   | ⑩ Dog House    |
|                          | ⑪ Cat Walk 60' |

Schaeffer Type E 10" Series 900 Hydraulic BOP. The waste and debris from this well will be disposed of in a reserve pit and covered up.

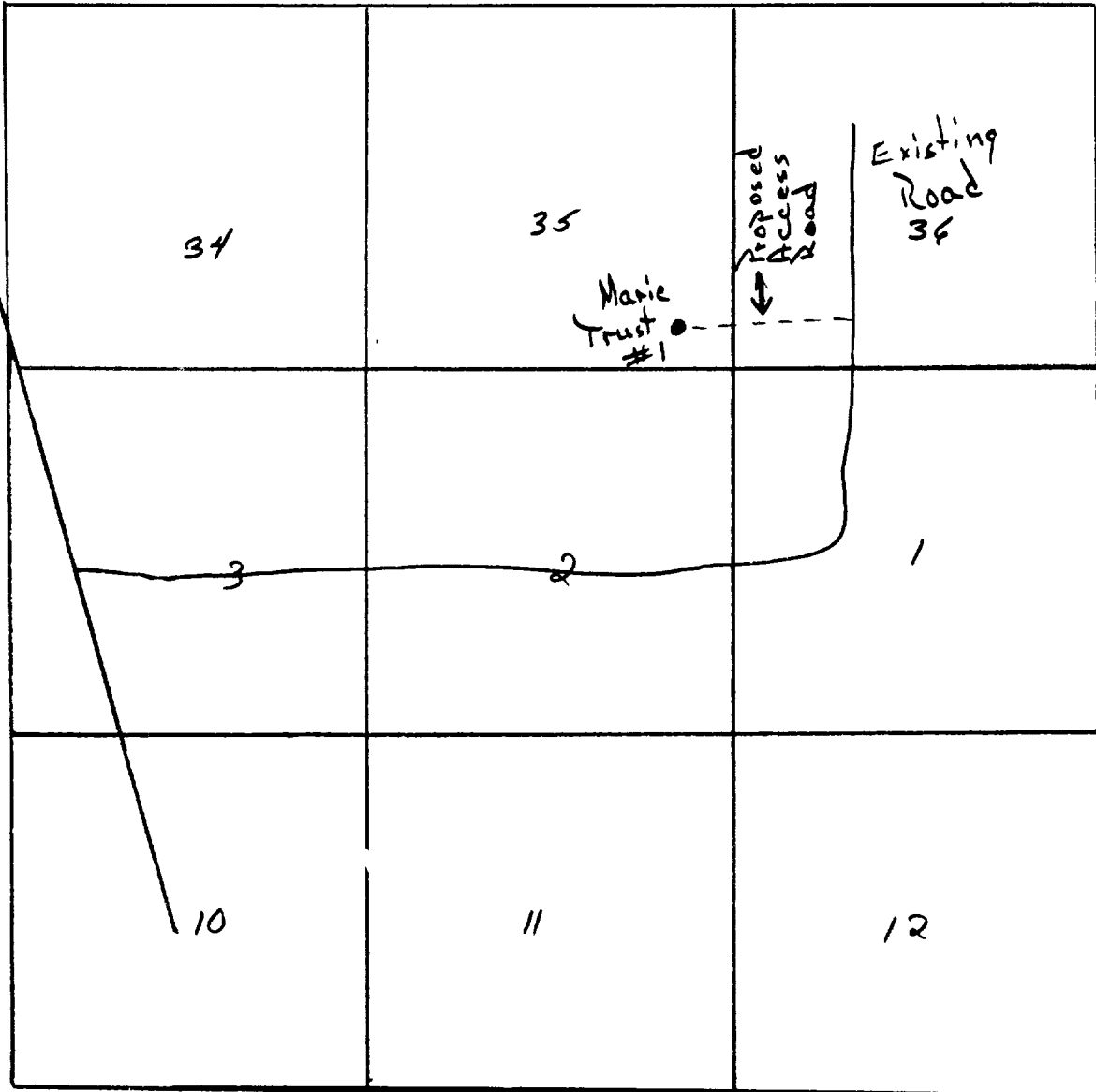
RECEIVED

JUN 17 1976

U. S. CONSERVATION COMMISSION  
WASH., D. C.

To Kenna

75 - 30E



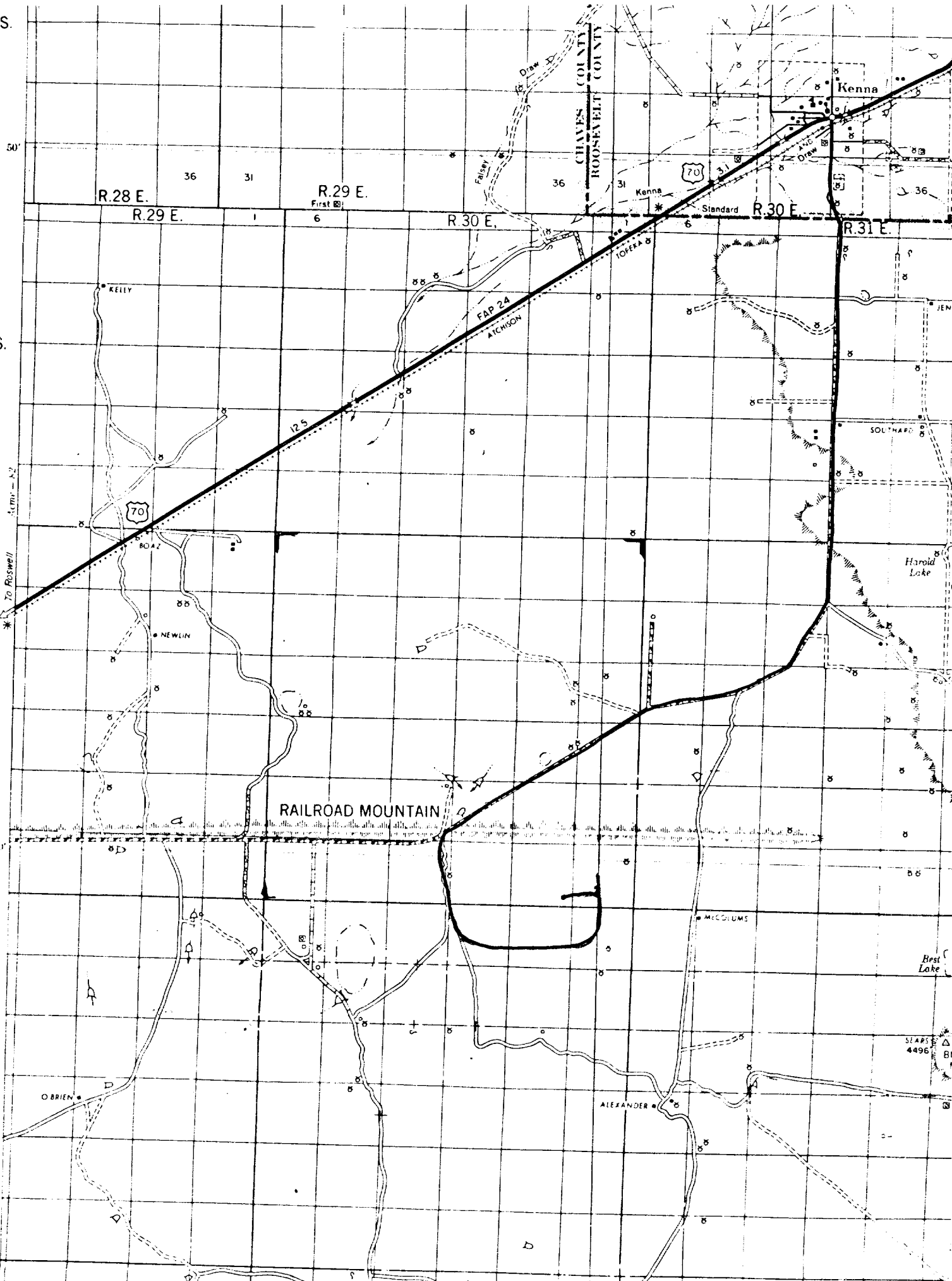
85 - 30E

RECEIVED

JUN 17 1976

EN CONSERVATION COM.  
MEMPHIS, TN

T.5 S.



T.6 S.

T.7 S.

T.8 S.

RECEIVED

JUN 17 1976

FIL CONSERVATION COMM.  
HOPKINS, N. H.

RECEIVED

JUN 16 1976

O. C. C.  
ARTEBIA, OFFICE