

NEW MEXICO OIL CONSERVATION COMMISSION
WELL LOCATION AND ACREAGE DEDICATION PLAT

Form C-102
Supersedes C-128
Effective 1-1-65

All distances must be from the outer boundaries of the Section.

Operator Harvey E. Yates Co., Inc.			Lease Exxon Federal		Well No. Exxon Federal No. 4
Unit Letter A	Section 6	Township 8 S	Range 31 E	County Chaves	
Actual Postage Location of Well: 660.0 feet from the north line and 660.0 feet from the east line					
Ground Level Elev. 4230.85	Producing Formation San Andres		Pool Cato-San Andres		Dedicated Acreage: 40 Acres

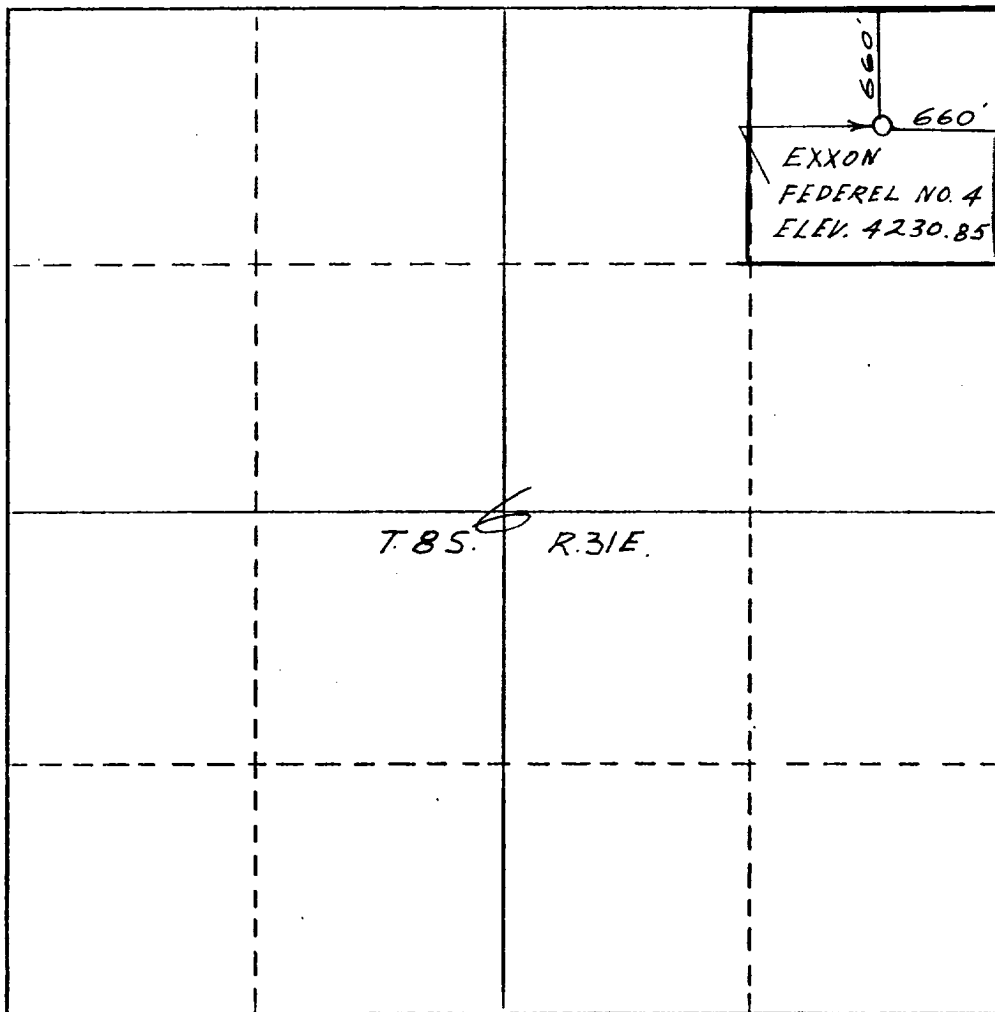
- Outline the acreage dedicated to the subject well by colored pencil or hachure marks on this plat.
- If more than one lease is dedicated to the well, outline each and identify the ownership thereof (both as to working interest and royalty).
- If more than one lease of different ownership is dedicated to the well, have the interests of all leases actually consolidated by communitization, unitization, force-pooling, etc?

RECEIVED
OCT 14 1977
U.S. GEOLOGICAL SURVEY
ARTESIA, NEW MEXICO

☐ Yes ☐ No If answer is "yes," type of consolidation _____

If answer is "no," list the owners and tract descriptions which have actually been consolidated. (Use reverse side of this form if necessary.) _____

No allowable will be assigned to the well until all interests have been consolidated (by communitization, unitization, forced-pooling, or otherwise) or until a non-standard unit, eliminating such interests, has been approved by the Commission.



CERTIFICATION

I hereby certify that the information contained herein is true and complete to the best of my knowledge and belief.

Name _____
Position
Vice President
Company
Harvey E. Yates Co., Inc
Date
October 12, 1977

I hereby certify that the well location shown on this plat was plotted from field notes of actual surveys made by me or under my supervision, and that the same is true and correct to the best of my knowledge and belief.

Date Surveyed
8-17-77
Registered Professional Engineer and/or Land Surveyor
Thomas L. Mann
Certificate No.
N.M. # 277

