

NEW MEXICO OIL CONSERVATION COMMISSION
WELL LOCATION AND ACREAGE DEDICATION PLAT

Form C-102
Supersedes C-128
Effective 1-1-65

All distances must be from the outer boundaries of the Section

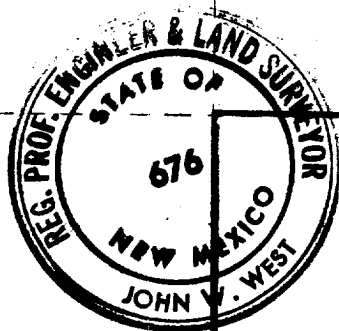
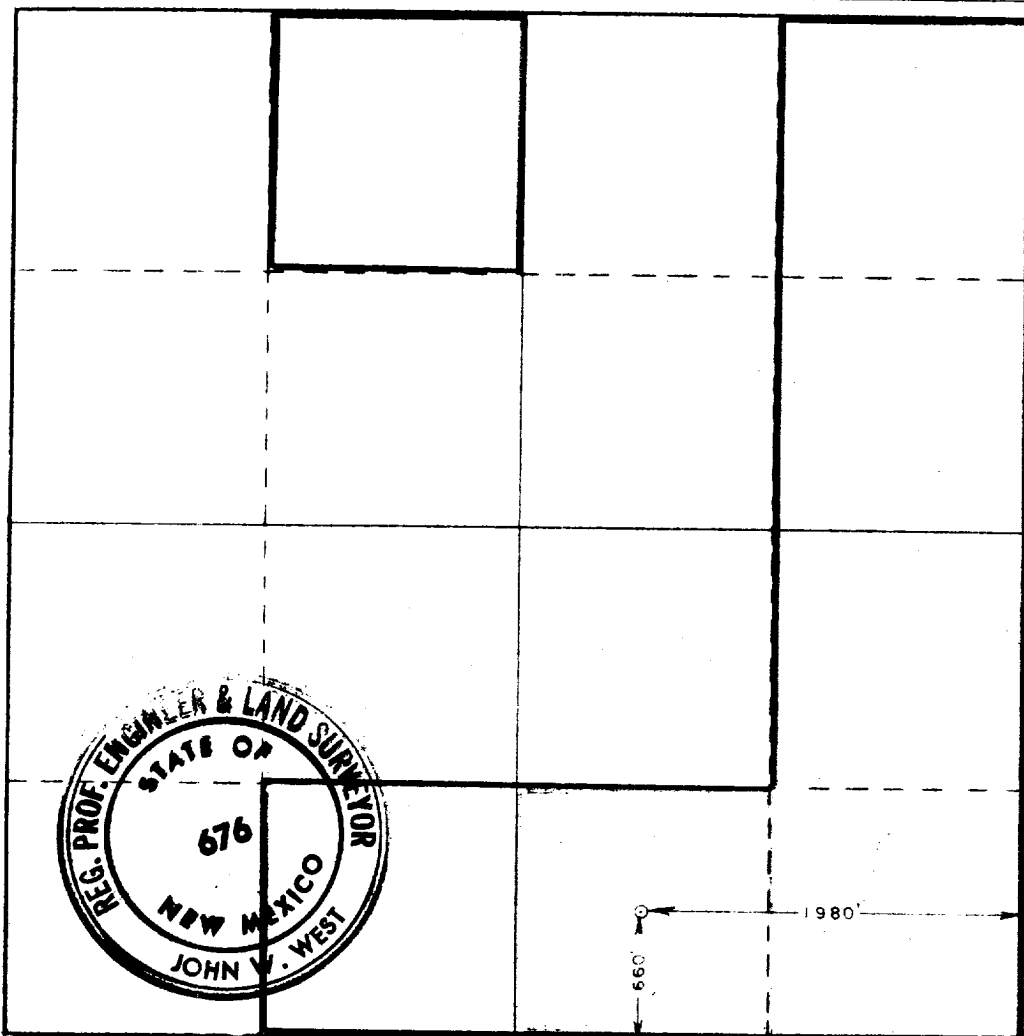
Owner H. L. Brown, Jr.			Lease State #26		Well No. 1
Lot Letter O	Section 26	Township 15 South	Range 31 East	County Chaves	
Actual Portage Location of Well: 660 feet from the South line and 1980 feet from the East line					
Ground Level Elev 4373.6	Producing Formation Mazon		Pool Wildcat		Dedicated Acreage: 40 Acres

1. Outline the acreage dedicated to the subject well by colored pencil or hatchure marks on the plat below.
2. If more than one lease is dedicated to the well, outline each and identify the ownership thereof (both as to working interest and royalty).
3. If more than one lease of different ownership is dedicated to the well, have the interests of all owners been consolidated by communitization, unitization, force-pooling, etc?

☐ Yes ☐ No If answer is "yes," type of consolidation **N/A**

If answer is "no," list the owners and tract descriptions which have actually been consolidated. (Use reverse side of this form if necessary.)

No allowable will be assigned to the well until all interests have been consolidated (by communitization, unitization, forced-pooling, or otherwise) or until a non-standard unit, eliminating such interests, has been approved by the Commission.



CERTIFICATION

I hereby certify that the information contained herein is true and complete to the best of my knowledge and belief.

John D. Davidson
Name

Prod-Acctg. Supervisor
Position

H. L. Brown, Jr.
Company

Sept. 13, 1978
Date

I hereby certify that the well location shown on this plat was plotted from field notes of actual surveys made by me or under my supervision, and that the same is true and correct to the best of my knowledge and belief.

Date Surveyed

September 6, 1978

Registered Professional Engineer and/or Land Surveyor

John W. West
Certificate No.

John W. West 676
Ronald J. Eidson 3239

0 330 660 990 1320 1650 1980 2310 2640 2970 3300

RECEIVED

SEP 22 1978

OIL CONSERVATION COMM.
HOBBS, N. M.

RECEIVED

SEP 18 1978

OIL CONSERVATION COMM.
HOBBS, N. M.