

**NEW MEXICO OIL CONSERVATION COMMISSION
WELL LOCATION AND ACREAGE DEDICATION PLAT**

Form C-102
Supersedes C-128
Effective 1-1-65

All distances must be from the outer boundaries of the Section.

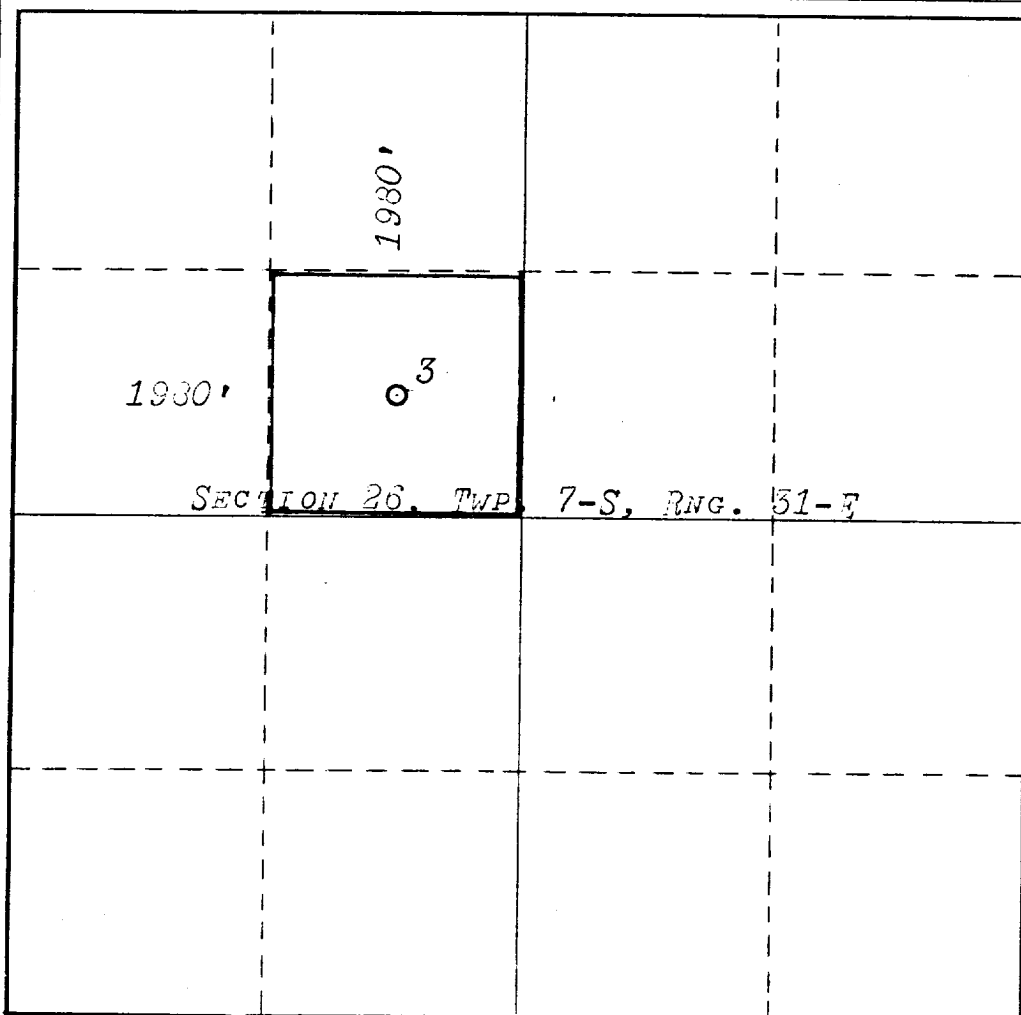
Operator FLAG REDFERN OIL CO.			Lease SOUTHARD "26"		Well No. 3
Unit Letter F	Section 26	Township 7-S	Range 31-E	County CHAVES	
Actual Footage Location of Well: 1980 feet from the WEST line and 1980 feet from the NORTH line					
Ground Level Elev. +572	Producing Formation San Andres		Pool Tom-Tom		Dedicated Acreage: 40 Acres

1. Outline the acreage dedicated to the subject well by colored pencil or hatchure marks on the plat below.
2. If more than one lease is dedicated to the well, outline each and identify the ownership thereof (both as to working interest and royalty).
3. If more than one lease of different ownership is dedicated to the well, have the interests of all owners been consolidated by communitization, unitization, force-pooling, etc?

☐ Yes ☐ No If answer is "yes," type of consolidation _____

If answer is "no," list the owners and tract descriptions which have actually been consolidated. (Use reverse side of this form if necessary.) _____

No allowable will be assigned to the well until all interests have been consolidated (by communitization, unitization, forced-pooling, or otherwise) or until a non-standard unit, eliminating such interests, has been approved by the Commission.



CERTIFICATION

I hereby certify that the information contained herein is true and complete to the best of my knowledge and belief.

Steve W. Rossler

Name

Steve W. Rossler

Position

Petroleum Engineer

Company

Flag-Redfern Oil Company

Date

December 29, 1978

I hereby certify that the well location shown on this plat was plotted from field notes of actual surveys made by me or under my supervision, and that the same is true and correct to the best of my knowledge and belief.

Date Surveyed

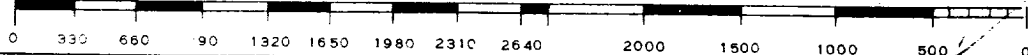
DEC. 22, 1978

Registered Professional Engineer
and/or Land Surveyor

[Signature]

Certificate No.

754



9-11-79
UNIT 13 1979
Q11, COMPTON

FILE