

NEW MEXICO OIL CONSERVATION COMMISSION  
 DISTRIBUTION  
 SANTA FE  
 LAND OFFICE  
 OPERATOR

NEW MEXICO OIL CONSERVATION COMMISSION

30-005-20722

STATE ☐ ☒ ☐  
 COUNTY ☐ ☐ ☐

APPLICATION FOR PERMIT TO DEEPEN OR PLUG BACK

DRILL ☒ DEEPEN ☐ PLUG BACK ☐  
 El Ran, Inc.  
 1603 Broadway, Lubbock, Texas 79401  
 2200 East 3 8-8 32-8  
 990 South  
 Chaves  
 San Andres  
 Rotary  
 N/A Surety Bond 39 W B K  
 January 21, 1980

PROPOSED CASING AND CEMENT PROGRAM

SIZE OF HOLE	SIZE OF CASING	WEIGHT PER FOOT	SETTING DEPTH	SACKS OF CEMENT	EST. TOP
12 3/4	8 5/8	23#	1700	500	Surface
7 7/8	4 1/2	10.5#	4350	175	3350

8 5/8 inch casing will be set at approximately 1700' and cemented to surface. Blow out preventor will be installed after surface casing is run; will be tested to 1500# before drilling out from under surface.

IN ABOVE SPACE DESCRIBE PROPOSED PROGRAM: IF PROPOSAL IS TO DEEPEN OR PLUG BACK, GIVE DATA ON PRESENT PRODUCTIVE ZONE AND PROPOSED NEW PRODUCTIVE ZONE. GIVE BLOWOUT PREVENTER PROGRAM, IF ANY.

I hereby certify that the information above is true and complete to the best of my knowledge and belief.

Signed Robert R. Ranch Title Vice-President Date December 20, 1979

(This space for State Use)

APPROVED BY [Signature] TITLE SUPERVISOR DISTRICT DATE DEC 26 1979

CONDITIONS OF APPROVAL, IF ANY:

RECEIVED DEC 20 1979

NEW MEXICO OIL CONSERVATION COMMISSION  
WELL LOCATION AND ACREAGE DEDICATION PLAT

Form C-102  
Supersedes C-128  
Effective 1-1-65

All distances must be from the outer boundaries of the Section.

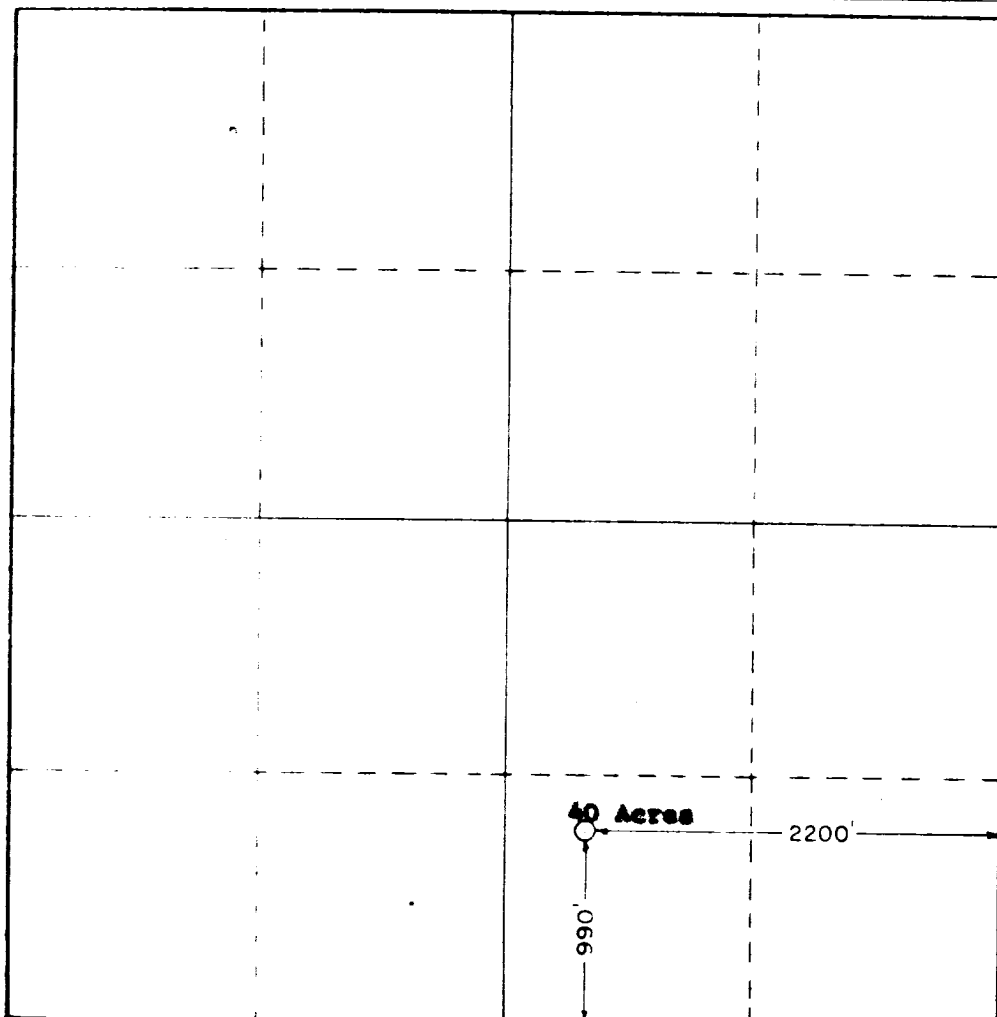
Operator <b>EL RAN, INC</b>		Lease <b>Sarah</b>		Well No. <b>1</b>
Tract Letter <b>101</b>	Section <b>3</b>	Township <b>8 South</b>	Range <b>32 East</b>	County <b>Chaves</b>
Actual Surface Location of Well: <b>990</b> feet from the <b>South</b> line and <b>2200</b> feet from the <b>East</b> line				
Ground Level Elev.	Producing Formation <b>San Andres</b>	Pool <b>Cheverre</b>	Dedicated Acreage: <b>40</b> Acres	

1. Outline the acreage dedicated to the subject well by colored pencil or hatchure marks on the plat below.
2. If more than one lease is dedicated to the well, outline each and identify the ownership thereof (both as to working interest and royalty).
3. If more than one lease of different ownership is dedicated to the well, have the interests of all owners been consolidated by communitization, unitization, force-pooling, etc?

☒ Yes ☐ No If answer is "yes," type of consolidation **Communitization**

If answer is "no," list the owners and tract descriptions which have actually been consolidated. (Use reverse side of this form if necessary.)

No allowable will be assigned to the well until all interests have been consolidated (by communitization, unitization, force-pooling, or otherwise) or until a non-standard unit, eliminating such interests, has been approved by the Commission.



CERTIFICATION

I hereby certify that the information contained herein is true and complete to the best of my knowledge and belief.

*Robert R. Ranch*

Name  
**ROBERT R. RANCH**

Position  
**Vice-President**

Company  
**El Ran, Inc.**

Date  
**December 20, 1979**

I hereby certify that the well location shown on this plat was plotted from field notes of actual surveys made by me or under my supervision, and that the same is true and correct to the best of my knowledge and belief.

Date Surveyed  
**December 19, 1979**

Registered Professional Engineer and/or Land Surveyor  
**L. JONES**

**3640**

Certificate No.

**3640**

