

NO. OF COPIES RECEIVED		
DISTRIBUTION		
SANTA FE		
FILE		
U.S.G.S.		
LAND OFFICE		
OPERATOR		

NEW MEXICO OIL CONSERVATION COMMISSION

30-005-20740

Form C-101
Revised 1-1-65

5A. Indicate Type of Lease	
STATE <input checked="" type="checkbox"/>	FEE <input type="checkbox"/>
5. State Oil & Gas Lease No.	
OG 1062	
7. Unit Agreement Name	
8. Farm or Lease Name	
State "F"	
9. Well No.	
14	
10. Field and Pool, or Wildcat	
Chaveroo	
12. County	
Chaves	
19. Proposed Depth	19A. Formation
4500	San Andres
20. Rotary or C.T.	
Rotary	
21. Elevations (Show whether DF, RT, etc.)	22. Approx. Date Work will start
4366.1 G.L.	July 15, 1980

APPLICATION FOR PERMIT TO DRILL, DEEPEN, OR PLUG BACK

1a. Type of Work	
b. Type of Well	
DRILL <input checked="" type="checkbox"/>	DEEPEN <input type="checkbox"/>
PLUG BACK <input type="checkbox"/>	
OIL WELL <input checked="" type="checkbox"/>	GAS WELL <input type="checkbox"/>
OTHER <input type="checkbox"/>	
2. Name of Operator	
Kerr-McGee Corporation	
3. Address of Operator	
P. O. Box 250, Amarillo, Texas 79189	
4. Location of Well	
UNIT LETTER C	LOCATED 1330'
FEET FROM THE West LINE	
AND 1310	FEET FROM THE North LINE OF SEC. 2
TWP. 8S RGE. 33E NMPM	
5. State Oil & Gas Lease No.	
OG 1062	
7. Unit Agreement Name	
8. Farm or Lease Name	
State "F"	
9. Well No.	
14	
10. Field and Pool, or Wildcat	
Chaveroo	
12. County	
Chaves	
19. Proposed Depth	
4500	
19A. Formation	
San Andres	
20. Rotary or C.T.	
Rotary	
21. Elevations (Show whether DF, RT, etc.)	22. Approx. Date Work will start
4366.1 G.L.	July 15, 1980

23. PROPOSED CASING AND CEMENT PROGRAM

SIZE OF HOLE	SIZE OF CASING	WEIGHT PER FOOT	SETTING DEPTH	SACKS OF CEMENT	EST. TOP
12 1/4	8 5/8	24	400	400	Circ to Surface
7 7/8	4 1/2	10.5	4500	250	3700 ft.

Drill 12 1/4" hole with rotary to 400'. Set 8 5/8" OD 24# casing and cement to surface. Then drill 7 7/8" hole to 4500', run logs, and set 4 1/2" OD 10.5# casing and cement with 200 sacks of cement. Run cement bond log and complete in the San Andres. Will install 8" Shaffer, Type 45 BOP's with pipe rams in top and blind rams in bottom. Casinghead outlets will be used for Kill and Choke lines.

****Cement on the production casing must be brought from the top of the salt or anhydrite to the surface casing by either circulating with cement or a DV tool at the top of the salt.**

APPROVAL VALID
FOR 90 DAYS UNLESS
DRILLING COMMENCED,

EXPIRES 9-25-80

R-6379 NSL

IN ABOVE SPACE DESCRIBE PROPOSED PROGRAM: IF PROPOSAL IS TO DEEPEN OR PLUG BACK, GIVE DATA ON PRESENT PRODUCTIVE ZONE AND PROPOSED NEW PRODUCTIVE ZONE. GIVE BLOWOUT PREVENTER PROGRAM, IF ANY.

I hereby certify that the information above is true and complete to the best of my knowledge and belief.

Signed Kelley Eisenberg Title Engineering Assistant Date May 8, 1980
(This Space for State Use)
APPROVED BY Jerry Saylor TITLE SUPERVISOR DISTRICT DATE JUN 25 1980
CONDITIONS OF APPROVAL, IF ANY: **SEE ABOVE

**NEW MEXICO OIL CONSERVATION COMMISSION
WELL LOCATION AND ACREAGE DEDICATION PLAT**

Form C-102
Supersedes C-128
Effective 1-1-65

All distances must be from the outer boundaries of the Section

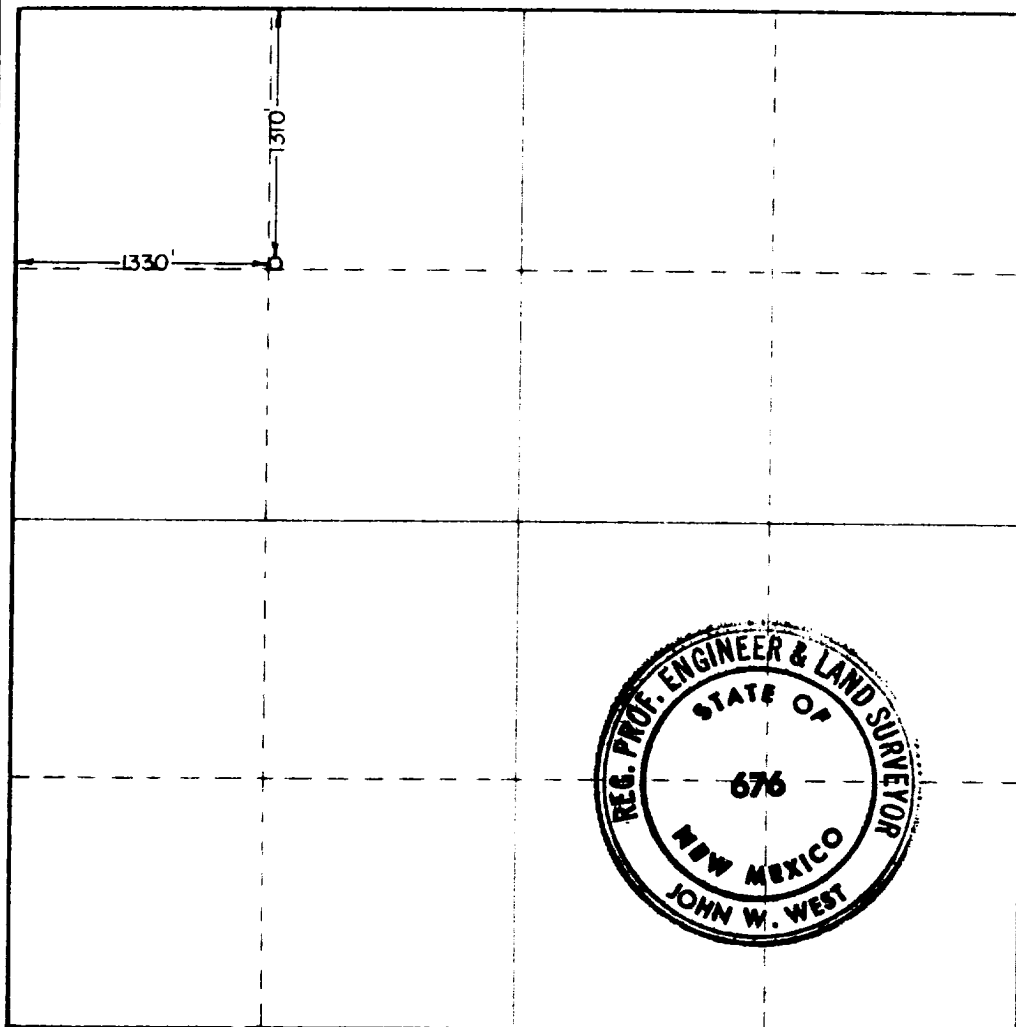
Operator Kerr McGee Corporation			Lease State F		Well No. 14
Unit Letter C	Section 2	Township 8 South	Range 33 East	County Chaves	
Actual Footage Location of Well: 1310 feet from the North line and 1330 feet from the West line					
Ground Level Elev. 4366.1	Producing Formation San Andres		Foot Chaverro		Dedicated Acreage: 40 (40.11) Acres

1. Outline the acreage dedicated to the subject well by colored pencil or hatchure marks on the plat below.
2. If more than one lease is dedicated to the well, outline each and identify the ownership thereof (both as to working interest and royalty).
3. If more than one lease of different ownership is dedicated to the well, have the interests of all owners been consolidated by communitization, unitization, force-pooling, etc?

☐ Yes ☐ No If answer is "yes," type of consolidation _____

If answer is "no," list the owners and tract descriptions which have actually been consolidated. (Use reverse side of this form if necessary.) _____

No allowable will be assigned to the well until all interests have been consolidated (by communitization, unitization, forced-pooling, or otherwise) or until a non-standard unit, eliminating such interests, has been approved by the Commission.



CERTIFICATION

I hereby certify that the information contained herein is true and complete to the best of my knowledge and belief.

Kelley Eisenberg
Name

Kelley Eisenberg
Position

Engineering Assistant
Company

Kerr-McGee Corporation
Date

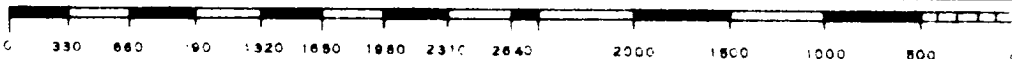
May 8, 1980

I hereby certify that the well location shown on this plat was plotted from field notes of actual surveys made by me or under my supervision and that the same is true and correct to the best of my knowledge and belief.

Date Surveyed
May 5, 1980

Registered Professional Engineer
and/or Land Surveyor

John W. West
Certificate No. **JOHN W. WEST 676**
PATRICK A. ROMERO 6663
Ronald J. Eidson 3239



RECEIVED
MAY 12 1980
OIL CONSERVATION DIV.

