



N.M.O.C.D. COPY

United States Department of the Interior

RECEIVED

GEOLOGICAL SURVEY

P. O. Drawer U
Artesia, New Mexico 88210

JUL 2 1981

O. C. D.

June 25, 1980 ARTESIA, OFFICE

Western Reserves Oil Company
Post Office Box 993
Midland, Texas 79702

Gentlemen:

WESTERN RESERVES OIL COMPANY
Button Mesa No. 1
2300 FSL 990 FEL Sec. 10, T. 8S, R. 31E.
Chaves County Lease NM-19197

Above Data Required on Well Sign

Your APPLICATION FOR PERMIT TO DRILL the above-described well to a depth of 4,200 feet to test the San Andres formation is hereby approved subject to compliance with the OIL AND GAS OPERATING REGULATIONS (30 CFR 221) and the following conditions:

1. Drilling operations authorized are subject to compliance with the GENERAL REQUIREMENTS FOR OIL AND GAS OPERATIONS ON FEDERAL LEASES, dated July 1, 1978.
2. Prior to commencing construction of road, pad, or other associated developments, operator will provide the dirt contractor with a copy of the SURFACE USE PLAN and this approval including the GENERAL REQUIREMENTS.
3. All access roads will be limited to a 12 foot wide driving surface, excluding turnarounds. Surface disturbance associated with road construction will be limited to 45 feet in width.
4. Submit a Daily Report of Operations from spud date until the Well Completion Report (form 9-330) is filed. The progress report should be not less than 8" x 5" in size and each page should identify the well.
5. All permanent above-ground structures and equipment shall be painted in accordance with the attached Painting Requirements. The color used should simulate Sandstone Brown (Federal Standard No. 595A, color 20318 or 30318).
6. Notify the Survey by telephone 24 hours prior to well.
7. Cement behind the 8-5/8" casing must be circulated.
8. Please have anyone contacting the Survey in regard to this well to identify the well with all of the information required above for the well sign.

Sincerely yours,

(SIGNED) GEORGE H. STEWART

George H. Stewart
Acting District Engineer

RECEIVED

JUL 7 1980

WILDERNESS DIV

UNITED STATES
DEPARTMENT OF THE INTERIOR
GEOLOGICAL SURVEY

APPLICATION FOR PERMIT TO DRILL, DEEPEN, OR PLUG BACK

1a. TYPE OF WORK

DRILL ☒DEEPEN ☐PLUG BACK ☐

b. TYPE OF WELL

OIL
WELL ☒GAS
WELL ☐OTHER ☐SINGLE
ZONE ☐MULTIPLE
ZONE ☐

2. NAME OF OPERATOR

Western Reserves Oil Company

3. ADDRESS OF OPERATOR

P. O. Box 993 Midland, TX 79702

4. LOCATION OF WELL (Report location clearly and in accordance with any State requirements.*)

At surface 2300' FSL & 990' FEL Sec. 10, T-8-S, R-31-E

At proposed prod. zone San Andres P₂ Zone 3920±

14. DISTANCE IN MILES AND DIRECTION FROM NEAREST TOWN OR POST OFFICE*

13.5 miles south of Kenna, NM

15. DISTANCE FROM PROPOSED*

LOCATION TO NEAREST
PROPERTY OR LEASE LINE, FT.

(Also to nearest drlg. unit line, if any)

990' FEL

2300' FSL

18. DISTANCE FROM PROPOSED LOCATION*
TO NEAREST WELL, DRILLING, COMPLETED,
OR APPLIED FOR, ON THIS LEASE, FT.

-

16. NO. OF ACRES IN LEASE

720

19. PROPOSED DEPTH

4200±

17. NO. OF ACRES ASSIGNED
TO THIS WELL

40

20. ROTARY OR CABLE TOOLS

Rotary

21. ELEVATIONS (Show whether DF, RT, GR, etc.)

4314.3 G.R.

22. APPROX. DATE WORK WILL START*

June 28, 1980

23.

PROPOSED CASING AND CEMENTING PROGRAM

SIZE OF HOLE	SIZE OF CASING	WEIGHT PER FOOT	SETTING DEPTH	QUANTITY OF CEMENT
12 1/4	8 5/8	24#	1500±	700 sx (cement circulated)
7 7/8	4 1/2	9.5#	4200±	300 sx

Well will be drilled to total depth & evaluated by running logs.
Casing will be run to total depth if logs indicate possible commercial production.

RECEIVED

JUL 2 1980

O. C. D.

ARTESIA, OFFICE

* ALREADY DRILLING DESCRIBE PROPOSED PROGRAM: If proposal is to deepen or plug back, give data on present productive zone and proposed new productive zone. If proposal is to drill or deepen directionally, give pertinent data on subsurface locations and measured and true vertical depths. Give blowout prevention program, if any.

SIGNED

Larry Franklin

TITLE

Agent

DATE

6/13/80

(This space for Federal or State office use)

PERMIT NO.

APPROVAL DATE

APPROVED BY

TITLE

DATE

SIGNATURE FOR APPROVAL, IF ANY

RECEIVED

JUL 7 1980

WILSON CONSERVATION

NEW MEXICO OIL CONSERVATION COMMISSION
WELL LOCATION AND ACREAGE DEDICATION PLAT

Form C-102
Supersedes C-128
Effective 1-1-65

All distances must be from the outer boundaries of the Section

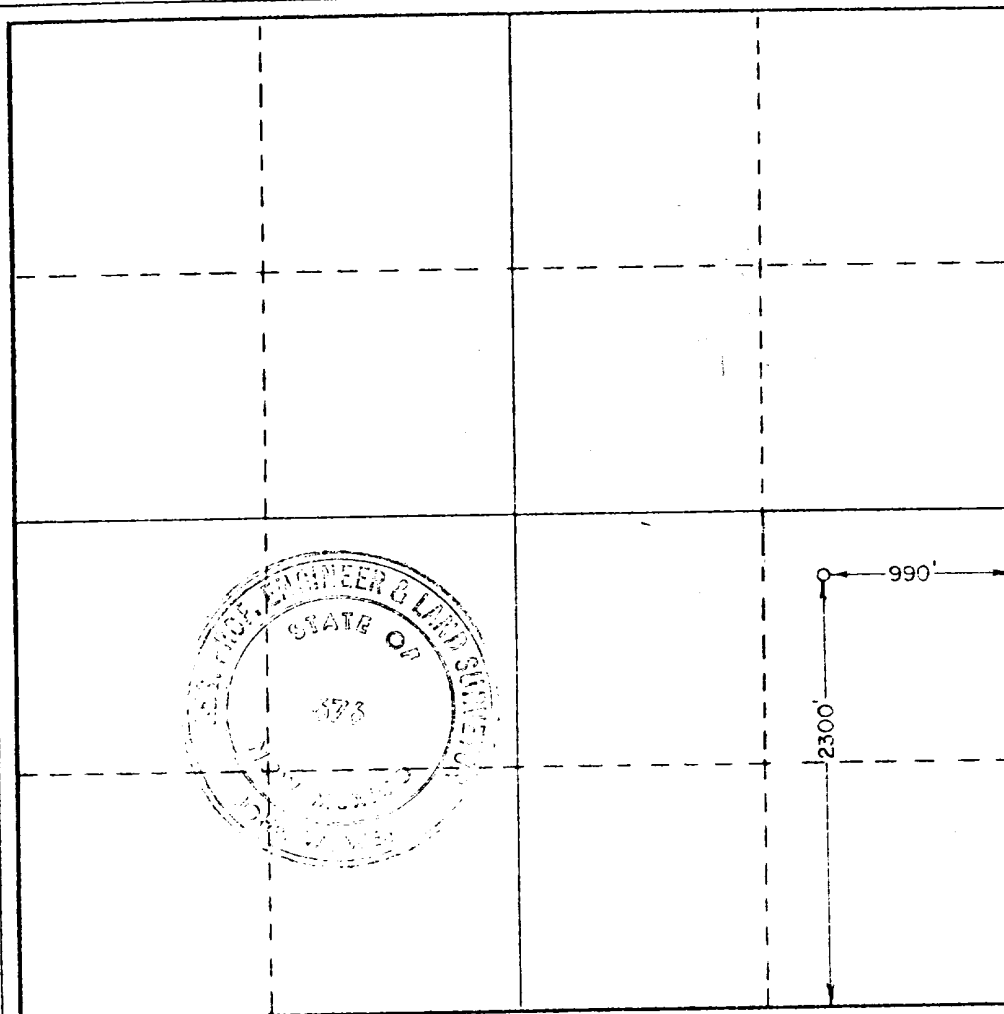
Operator Western Reserve Oil Company		Lease Button Mesa		Well No. 1
Tract Letter 1	Section 10	Township 8 South	Range 31 East	County Chaves
Actual Well Location of Well:				
2300	feet from the South	line and	990	feet from the East
Ground Level Elev. 4314.3	Producing Formation SAN ANDRES	Pool UNDESIGNATED	Dedicated Acreage 40 Acres	

1. Outline the acreage dedicated to the subject well by colored pencil or hatchure marks on the plat below.
2. If more than one lease is dedicated to the well, outline each and identify the ownership thereof (both as to working interest and royalty).
3. If more than one lease of different ownership is dedicated to the well, have the interests of all owners been consolidated by communitization, unitization, force-pooling, etc?

☐ Yes ☐ No If answer is "yes," type of consolidation _____

If answer is "no," list the owners and tract descriptions which have actually been consolidated. (Use reverse side of this form if necessary.) _____

No allowable will be assigned to the well until all interests have been consolidated (by communitization, unitization, forced-pooling, or otherwise) or until a non-standard unit, eliminating such interests, has been approved by the Commission.



CERTIFICATION

I hereby certify that the information contained herein is true and complete to the best of my knowledge and belief.

Name *Terry Franklin*
Position *Agent*
Company *Western Reserve Oil Co.*
Date *6/16/80*

I hereby certify that the well location shown on this plat was plotted from field notes of actual surveys made by me or under my supervision, and that the same is true and correct to the best of my knowledge and belief.

Date Received *May 24, 1980*
Registered Professional Engineer
and Land Surveyor
John W. West
Certificate No. **JOHN W. WEST 678**
PATRICK A. ROMERO 6863
Ronald J. Eldson 3239

0 330 660 990 1320 1650 1980 2310 2640 2970 3300 3630 3960 4290 4620 4950 5280 5610 5940 6270 6600

RECEIVED
JUL 7 1980
OIL CONSERVATION DIV

Surface Use and Operation Plan

Western Reserves Oil Company
Button Mesa #1
2300' FSL & 990' FEL
Section 10, T-8-S, R-31-E
Chaves County, New Mexico

I. Existing Roads

- A. Exhibit 'A' is a portion of a topographic map displaying the existing road within the immediate area and also the proposed location. Proposed location is approximately 13.5 miles south of Kenna, New Mexico.

II. Access Roads

- A. Planned access roads are shown on Exhibit 'B'.
- B. The road will be constructed of caliche and will be 12' wide.

III. Location of Existing Wells

- A. Existing wells within the immediate area are shown on Exhibit B.

IV. Location of Proposed Production Facilities

- A. Exhibit 'C' shows the proposed location of our production facilities.

V. Location and Type of Water Supply

- A. There is no known surface water in the area.
- B. All water in drilling operations will be trucked to the drillsite from commercial sources.

VI. Source of Construction Materials

- A. Construction material will be caliche, which will be purchased by dirt contractor.

VII. Methods for Handling Waste Disposal

- A. Well cuttings will be disposed in the reserve pit. All waste will be buried in a separate pit.
- B. After completion, any produced water will be collected in tanks and trucked to an appropriate disposal system.

VIII. Auxiliary Facilities

- A. None anticipated.

IX. Wellsite Layout

- A. Attached is a plat of the wellsite and rig layout. Exhibit 'D' illustrates the layout.

X. Plans for Restoration of the Surface

- A. After completion of the well, pits will be filled and the location cleaned of all trash and junk to leave the wellsite in good condition.
- B. Any unguarded pits containing fluids will be fenced off until they are filled.

XI. Other Information

- A. Topography: Terrain in the general area consists of an undulating plain covered by sandy soils of alluvian and aeolian origin.
- B. Soil: Belongs to the typic haplargids paleargids association.
- C. Vegetation: Consists of yucca, glavea, rhus trilobata, gutierrezia sarothrae, eurotia, lanata and lycurus phleoides.

XI. D. Fauna: Consists of crotalus and sistrurus,
canis lantrans, lepus alleni, mephitis and
antalopus.

E. The surface is federal surface.

XII. Operator's Representative

Natural Resources Evaluation & Engineering, Inc.
P. O. Box 2188
Hobbs, NM 88240
Office - 505-393-6364

XIII. Certification

I hereby certify that I, or persons under my direct supervision, have inspected the proposed drillsite and access route; that I am familiar with the conditions which presently exist; that the statements made in this plan are, to the best of my knowledge, true and correct; and, that the work associated with the operations proposed herein will be performed by Western Reserves Oil Company and its contractors and subcontractors in conformity with this plan and the terms and conditions under which it is approved.

6/13/80
Date

Terry Franklin
Terry Franklin,
Agent Western Reserves
Oil Company

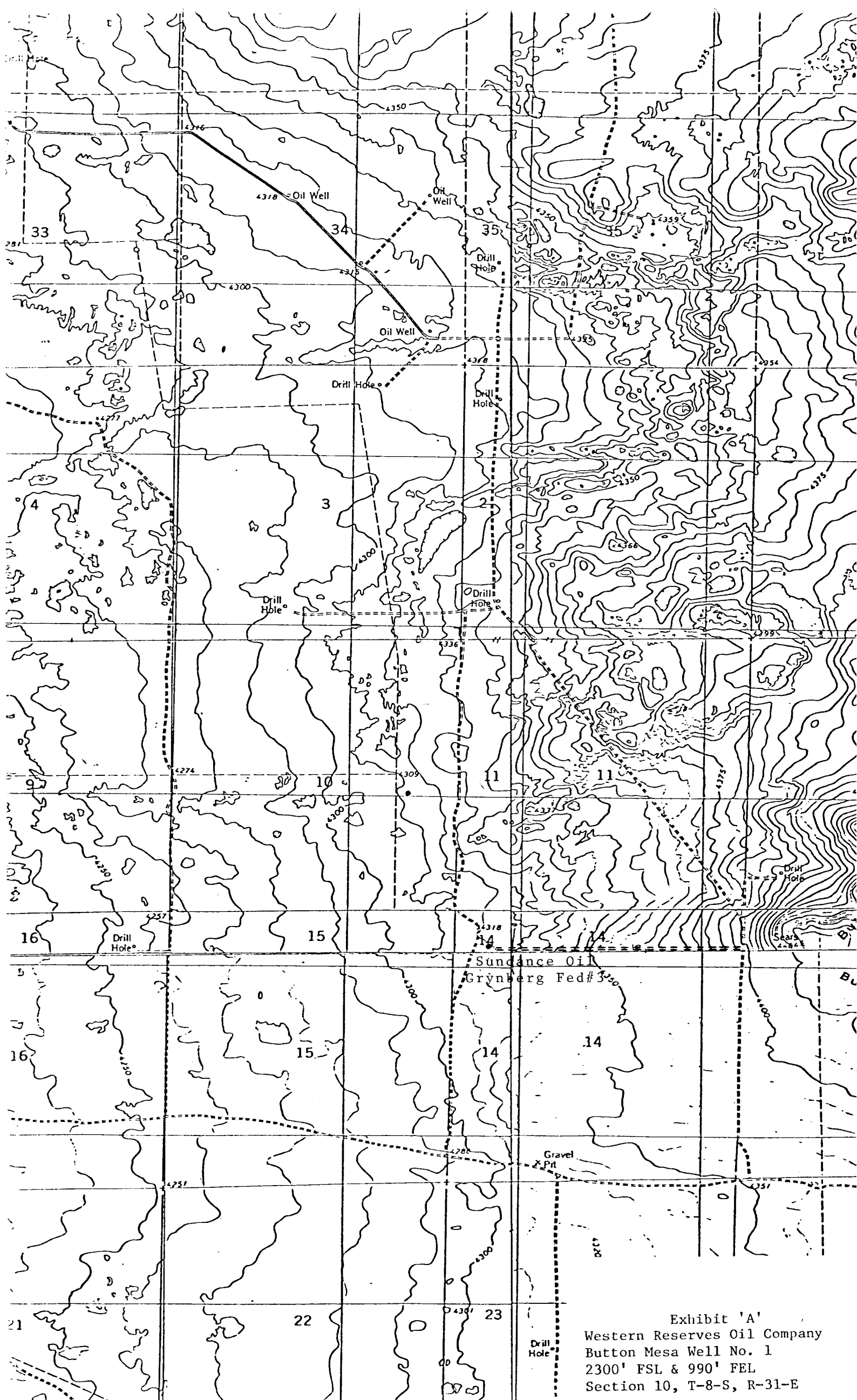


Exhibit 'A'
Western Reserves Oil Company
Button Mesa Well No. 1
2300' FSL & 990' FEL
Section 10, T-8-S, R-31-E

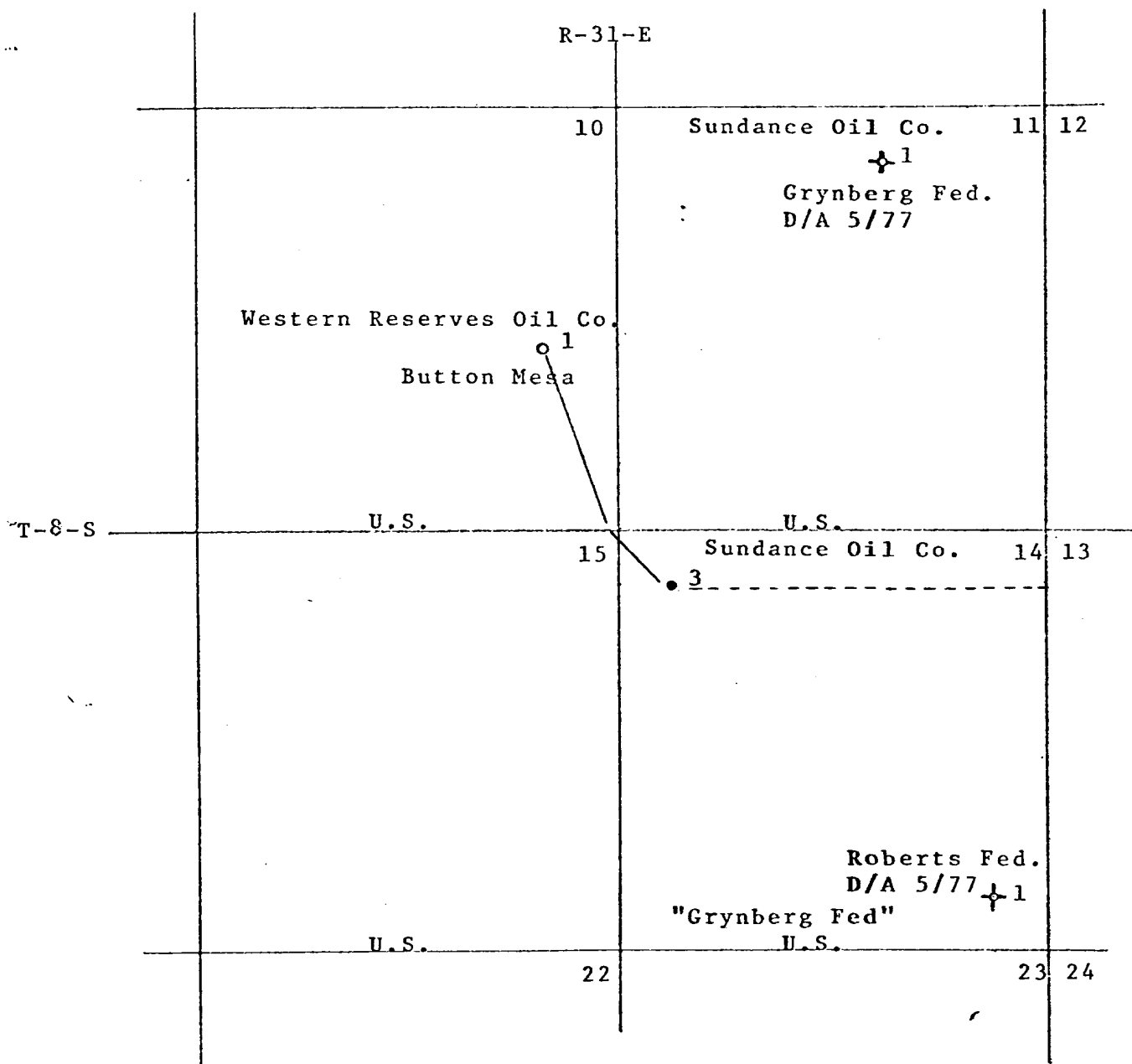
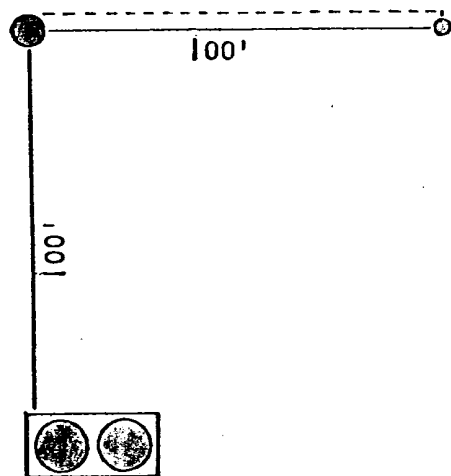


Exhibit 'B'

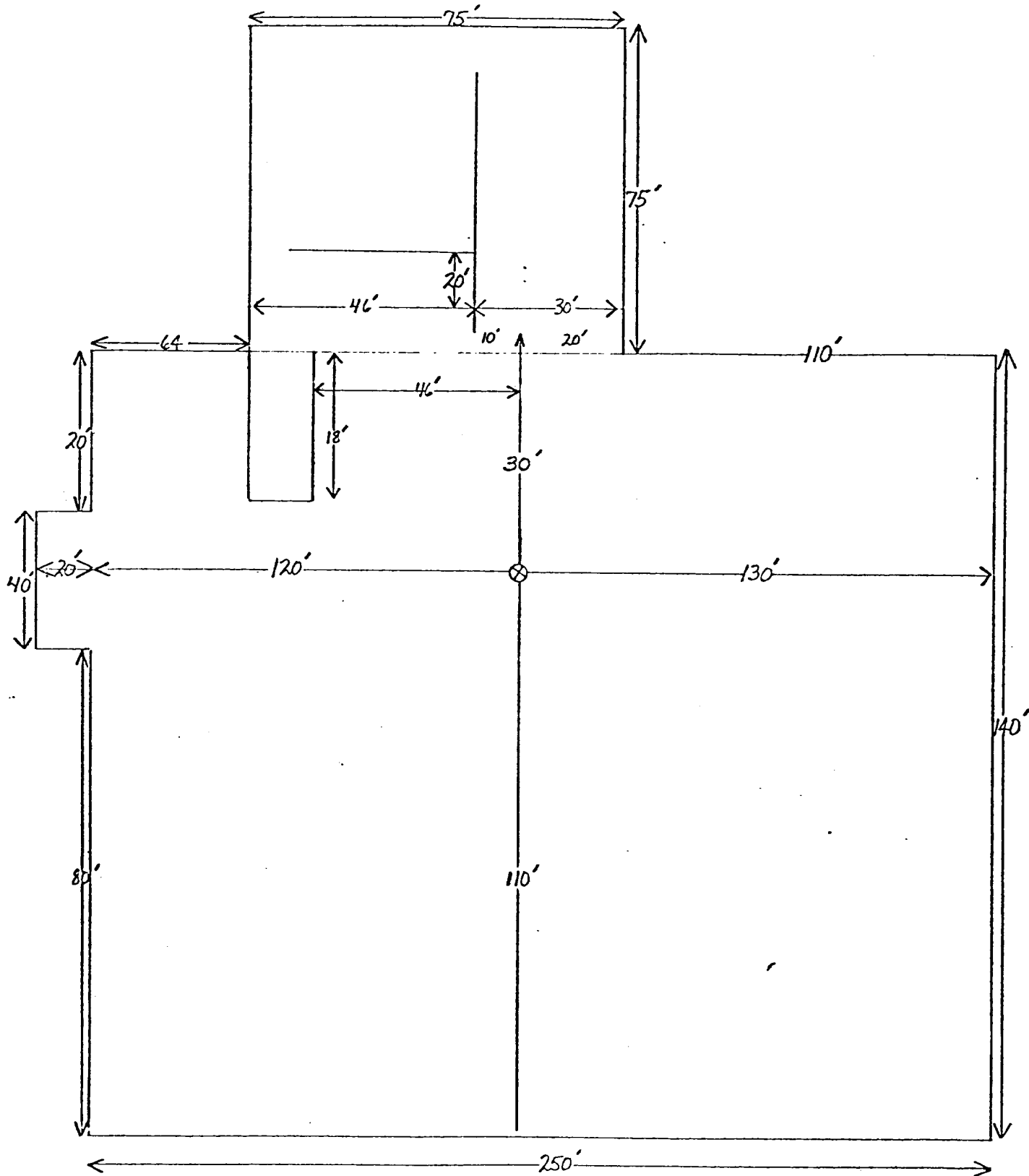
Western Reserves Oil Company
 Button Mesa Well No. 1
 2300' FSL & 990' FEL
 Section 10, T-8-S, R-31-E



- Proposed well
- Proposed heater treater
- ⊗ Proposed tank battery
- Proposed flow-line

Exhibit 'C'
 Western Reserves Oil Company
 Button Mesa Well No. 1
 2300' FSL & 990' FEL
 Section 10, T-8-S, R-31-E

EXHIBIT 'D'
Western Reserves Oil Company
Button Mesa Well No. 1
2300' FSL & 990' FEL
Section 10, T-8-S, R-31-E



WEK RIG 3

Application to Drill

Western Reserves Oil Company
Button Mesa #1
2300' FSL & 990' FEL
Section 10, T-8-S, R-31-E
Chaves County, New Mexico

The following answers are provided for your consideration, in reponse to your outline under Section II of Bulletin NTL-6.

1. Location: 2300' FSL & 990' FEL, Section 10, T-8-S, R-31-E, Chaves County, New Mexico.
2. Elevation Above Sea Level: 4314.3.
3. Geologic Name of Surface Formation: Alluvium
4. Drilling Tools & Associated Equipment: Conventional rotary drilling rig using mud for the circulation medium.
5. Proposed Drilling Depth: 4200[±]
6. Estimated Geological Marker Tops: Rustler Anhydrite 1470', Salado Salt 1490', Yates 2000', San Andres 3180'.
7. Mineral Bearing Formation: Water bearing - none, oil - bearing - San Andres @ 3960'.
8. Casing Program: (A) Surface casing - 8 5/8" - 24#/ft - K-55 new casing. (B) Production casing - 4 1/2" - 9.5#/ft - K-55 new casing.
9. Setting Depth of Casing and Cement for Same: (A) 8 5/8: casing set @ 1470'[±]. Cement will be circulated to surface using 500 sx of Halliburton light with 3# gilsonite/sx, 1/4# flocele/sx, 0.2% CaCl. Followed by 200 sx Class 'C', 0.2% CaCl. (B) 4 1/2" casing set @ 4200[±] and will be cemented with 300 sx Class 'C', 50-50 pozmix, 8# salt/sx, 1/4# flocele.sx.
10. Pressure Control Equipment: Blowout preventers will be installed on the surface casing. They will be 10" API Series 900 Type B, blowout preventers with 4 1/2" pipe rams. Hydraulic operated 6000# test. The blowout preventers will be tested to 1000 psi after they are installed on the surface casing, prior to drilling out.

11. Proposed Circulation Medium: Mud will be used for the circulating medium for all depths in this well. The following mud properties will be maintained: Viscosity sufficient to clean hole; weight 9.5-10.0 ppg; viscosity through pay zone 35 to 40 for good samples.
12. Testing, Logging and Coring Programs: (A) Testing: All testing will be commenced after the well is drilled and casing has been set and cemented. (B) Logging: At total depth the following logs will be run: 0-4200[±] sidewall neutron porosity with gamma ray and caliper, dual laterolog, micro - S.F.L. (C) No coring.
13. Potential Hazards: No abnormal pressure or temperature zones are anticipated. Hydrogen sulfide gas is not expected to be a problem; however, the drilling rig will be so situated as to allow all gas vapors to be expelled away from all personal gathering sites and engine exhausts.
14. Anticipated Starting Date and Duration of Operations: Commence drilling operations June 24, 1980. Three weeks to complete on July 15, 1980.
15. Other Facets of Operations: After running 4 1/2" casing, cased hole gamma ray collar correlation logs will be run from total depth to 3800[±]. The San Andres porosity pay will be perforated and acidized. The well will then be swab tested and a pumping unit will be installed to potential and produce the well.

RECEIVED
JUL 7 1980
OIL CONSERVATION DIV