

Form 9-331  
Dec. 1973

Form Approved.  
Budget Bureau No. 42-R1424

UNITED STATES  
DEPARTMENT OF THE INTERIOR  
GEOLOGICAL SURVEY

SUNDRY NOTICES AND REPORTS ON WELLS

(Do not use this form for proposals to drill or to deepen a well or to connect to a different reservoir. Use Form 9-331-C for such proposal.)

1. oil well ☒ gas well ☐ other ☐

2. NAME OF OPERATOR  
Dalport Oil Corp.

3. ADDRESS OF OPERATOR  
3471 Interfirst One, Dallas, Texas 75202

4. LOCATION OF WELL (REPORT LOCATION CLEARLY. See space 17 below.)  
AT SURFACE: 660' FSL, 1650' FWL  
AT TOP PROD. INTERVAL: same  
AT TOTAL DEPTH: same

16. CHECK APPROPRIATE BOX TO INDICATE NATURE OF NOTICE, REPORT, OR OTHER DATA

REQUEST FOR APPROVAL TO:

TEST WATER SHUT-OFF ☐  
FRACTURE TREAT ☐  
SHOOT OR ACIDIZE ☐  
REPAIR WELL ☐  
PULL OR ALTER CASING ☐  
MULTIPLE COMPLETE ☐  
CHANGE ZONES ☐  
ABANDON\* ☐  
(other) ☐

SUBSEQUENT REPORT OF:

☐  
☐  
☐  
☐  
☐  
☐  
☐  
☒

NOTE: Orig. info:  
8-5/8 - 24# at 304'  
4-1/2" - 9.5# at 2365'

(NOTE: Report results of multiple completion or zone change on Form 9-330.)

17. DESCRIBE PROPOSED OR COMPLETED OPERATIONS (Clearly state all pertinent details, and give pertinent dates, including estimated date of starting any proposed work. If well is directionally drilled, give subsurface locations and measured and true vertical depths for all markers and zones pertinent to this work.)\*

PBCP Services plugged as follows:

10-1-84 Spotted 20 Sx 2343-2243; pulled tbg, tagged top plug 2110. Pulled 2 stds, loaded & circ. hole w/salt gel; shot csg 1580-1317. Spotted 10 Sx at 1550. Pulled 4-1/2 at 1324', recov. 1324.15' - 4-1/2", spotted 55 Sx at 1380 across stub. Pulled tbg. Shut down.

10-2-84 Tagged plug at 1340 (too low). Spotted 30 more Sx across stub. Tagged at 1190'. Spotted 45 Sx at 350 across base 8-5/8". Tagged at 220 w/tbg. Spotted 10 Sx at surface. Erected dry hole marker. Ready for inspection.

SUMMARY: 2343-2243 20 Sx 350-220 45 Sx  
1550-1450 10 Sx 20-D 10 Sx  
1380-1190 85 Sx

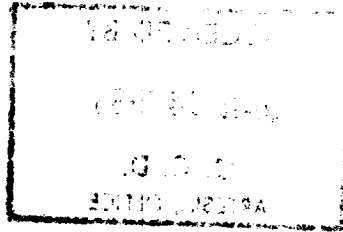
Subsurface Safety Valve: Manu. and Type \_\_\_\_\_ Set @ \_\_\_\_\_ Ft.

18. I hereby certify that the foregoing is true and correct

SIGNED James M. Lantz TITLE Geologist DATE 11-5-84

(This space for Federal or State office use)

APPROVED BY \_\_\_\_\_ TITLE \_\_\_\_\_ DATE \_\_\_\_\_  
CONDITIONS OF APPROVAL, IF ANY:



RECEIVED

JAN 29 1985

U.S. DEPT. OF JUSTICE  
HONORARY OFFICE