

NO. OF COPIES RECEIVED	
DISTRIBUTION	
SANTA FE	
FILE	
U.S.G.S.	
LAND OFFICE	
OPERATOR	

NEW MEXICO OIL CONSERVATION COMMISSION

30-005-20757

Form C-101
Revised 1-1-65

5A. Indicate Type of Lease STATE <input checked="" type="checkbox"/> FEE <input type="checkbox"/>
5. State Oil & Gas Lease No. L - 4744

APPLICATION FOR PERMIT TO DRILL, DEEPEN, OR PLUG BACK

1a. Type of Work DRILL <input checked="" type="checkbox"/> DEEPEN <input type="checkbox"/> PLUG BACK <input type="checkbox"/>		7. Unit Agreement Name
b. Type of Well OIL WELL <input checked="" type="checkbox"/> GAS WELL <input type="checkbox"/> OTHER <input type="checkbox"/> SINGLE ZONE <input type="checkbox"/> MULTIPLE ZONE <input type="checkbox"/>		8. Farm or Lease Name State "AD"
2. Name of Operator Anadarko Production Company		9. Well No. 1
3. Address of Operator P. O. Box 67, Loco Hills, New Mexico 88255		10. Field and Pool, or Wildcat Wildcat
4. Location of Well UNIT LETTER E LOCATED 1980' FEET FROM THE North LINE AND 660' FEET FROM THE West LINE OF SEC. 1 // TWP. 11S RGE. 31E NMPM		12. County Chaves
19. Proposed Depth 4300'		19A. Formation San Andres
20. Rotary or C.T. Rotary		
21. Elevations (Show whether DE, RT, etc.) 4469.6 GL	21A. Kind & Status Plug. Bond Blanket on File	21B. Drilling Contractor Warton
22. Approx. Date Work will start 8-10-80		

PROPOSED CASING AND CEMENT PROGRAM

SIZE OF HOLE	SIZE OF CASING	WEIGHT PER FOOT	SETTING DEPTH	SACKS OF CEMENT	EST. TOP
12-1/4"	8-5/8"	24.0#	350'	150	Circulated
7-7/8"	4-1/2"	10.5#	4300'	450	1700'

- Rig up rotary tools.
- Drill 12 1/4" hole to approximately 350'; set and circulate or ready-mix cement to surface on 8-5/8" casing. Install & test Series 900 Double Ram Hydraulic BOP.
- Drill to T D (approximately 4300'). ***Cement on the production casing must be brought from the top of the salt or anhydrite to the surface casing by either circulating the casing with cement or a DV tool at the top of the salt.
- Run Open Hole Logs.
- Set and cement 4 1/2" casing on bottom.
- Perforate, acidize and fracture treat San Andres Zone.
- Run 2-3/8" tubing, rods and bottom-hole pump.
- Install production equipment and place well on production.

ABOVE SPACE DESCRIBE PROPOSED PROGRAM; IF PROPOSAL IS TO DEEPEN OR PLUG BACK, GIVE DATA ON PRESENT PRODUCTIVE ZONE AND PROPOSED NEW PRODUCTION ZONE. GIVE BLOWOUT PREVENTER PROGRAM, IF ANY.

I hereby certify that the information above is true and complete to the best of my knowledge and belief.

Signed Jerry E. Huchler Title Area Supervisor Date August 1, 1980

(This space for State Use)

APPROVED BY Jerry E. Huchler TITLE SUPERVISOR DISTRICT 1 DATE AUG 1 1980

CONDITIONS OF APPROVAL, IF ANY:

***SEE ABOVE

**NEW MEXICO OIL CONSERVATION COMMISSION
WELL LOCATION AND ACREAGE DEDICATION PLAT**

Form C-102
Supersedes C-128
Effective 1-1-65

All distances must be from the outer boundaries of the Section.

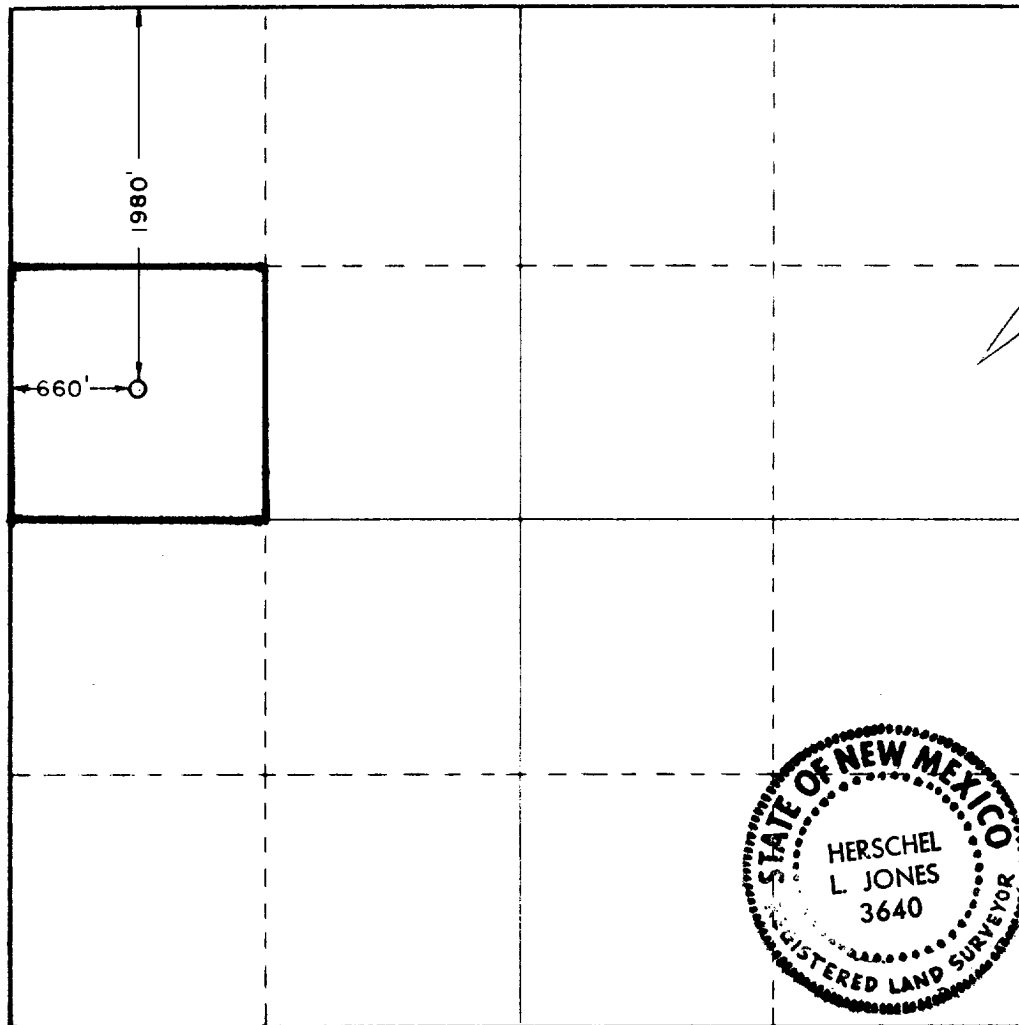
Operator ANADARKO PRODUCTION COMPANY			Lease State AD		Well No. 1
Unit Letter E	Section 11	Township 11 South	Range 31 East	County Chaves	
Actual Footage Location of Well: 1980 feet from the North line and 660 feet from the West line					
Ground Level Elev. 4469.6 GL	Producing Formation San Andres		Pool Wildcat	Dedicated Acreage; 40 Acres	

1. Outline the acreage dedicated to the subject well by colored pencil or hatchure marks on the plat below.
2. If more than one lease is dedicated to the well, outline each and identify the ownership thereof (both as to working interest and royalty).
3. If more than one lease of different ownership is dedicated to the well, have the interests of all owners been consolidated by communitization, unitization, force-pooling, etc?

☐ Yes ☐ No If answer is "yes," type of consolidation _____

If answer is "no," list the owners and tract descriptions which have actually been consolidated. (Use reverse side of this form if necessary.) _____

No allowable will be assigned to the well until all interests have been consolidated (by communitization, unitization, forced-pooling, or otherwise) or until a non-standard unit, eliminating such interests, has been approved by the Commission.



CERTIFICATION

I hereby certify that the information contained herein is true and complete to the best of my knowledge and belief.

Name
Jerry E. Buckles

Position
Area Supervisor

Company
Anadarko Production Company

Date
August 1, 1980

I hereby certify that the well location shown on this plat was plotted from field notes of actual surveys made by me or under my supervision, and that the same is true and correct to the best of my knowledge and belief.

Date Surveyed
August 1, 1980

Registered Professional Engineer and/or Land Surveyor

Certificate No. **3640**



11

RECEIVED
AUG 1 1980
OIL CONSERVATION DIV

FILE