

UNITED STATES  
DEPARTMENT OF THE INTERIOR  
GEOLOGICAL SURVEY

30-005-20764

5. LEASE DESIGNATION AND SERIAL NO.

NM 13999

6. IF INDIAN, ALLOTTEE OR TRIBE NAME

7. UNIT AGREEMENT NAME

8. FARM OR LEASE NAME

Dachner Federal

9. WELL NO.

#6

10. FIELD AND POOL, OR WILDCAT

Chaveroo (SA)

11. SEC., T., R., M., OR BLK.  
AND SURVEY OR AREA

Sec 3, T8S, R32E

12. COUNTY OR PARISH 13. STATE

Chaves New Mexico

## APPLICATION FOR PERMIT TO DRILL, DEEPEN, OR PLUG BACK

1a. TYPE OF WORK

DRILL ☒DEEPEN ☐PLUG BACK ☐

b. TYPE OF WELL

OIL  
WELL ☒GAS  
WELL ☐

OTHER

SINGLE  
ZONE ☒MULTIPLE  
ZONE ☐

2. NAME OF OPERATOR

El Ran, Inc.

3. ADDRESS OF OPERATOR

1603 Broadway, Lubbock, Texas 79401

4. LOCATION OF WELL (Report location clearly and in accordance with any State requirements.)\*

At surface

990' FWL &amp; 2200' FSL

At proposed prod. zone

14. DISTANCE IN MILES AND DIRECTION FROM NEAREST TOWN OR POST OFFICE\*

20 miles south of Elida, New Mexico

15. DISTANCE FROM PROPOSED\*

LOCATION TO NEAREST  
PROPERTY OR LEASE LINE, FT.  
(Also to nearest drlg. unit line, if any)

330

16. NO. OF ACRES IN LEASE

160

17. NO. OF ACRES ASSIGNED  
TO THIS WELL

40

18. DISTANCE FROM PROPOSED LOCATION\*

TO NEAREST WELL, DRILLING, COMPLETED,  
OR APPLIED FOR, ON THIS LEASE, FT.

1,210

19. PROPOSED DEPTH

4,400

20. ROTARY OR CABLE TOOLS

Rotary

21. ELEVATIONS (Show whether DF, RT, GR, etc.)

4488 GR.

22. APPROX. DATE WORK WILL START\*

Aug. 15, 1980

23.

## PROPOSED CASING AND CEMENTING PROGRAM

SIZE OF HOLE	SIZE OF CASING	WEIGHT PER FOOT	SETTING DEPTH	QUANTITY OF CEMENT
12-7/8	8-5/8	23#	1700	550
7-7/8	4-1/2	10.5#	4400	175

Mud Program:  
BOP Program:10# Mud, 35 Viscosity from 4000' to TD  
See Exhibits C, D, & E

RECEIVED

JUL 9 1980

U. S. GEOLOGICAL SURVEY  
HOBBS, NEW MEXICO

IN ABOVE SPACE DESCRIBE PROPOSED PROGRAM: If proposal is to deepen or plug back, give data on present productive zone and proposed new productive zone. If proposal is to drill or deepen directionally, give pertinent data on subsurface locations and measured and true vertical depths. Give blowout preventer program, if any.

24.

SIGNED

Robert R. Ranch

TITLE

Agent

DATE July 7, 1980

(This space for Federal or State office use)

PERMIT NO.

APPROVAL DATE

APPROVED BY

TITLE

DATE

CONDITIONS OF APPROVAL, IF ANY:

**MEXICO OIL CONSERVATION COMMISSION**  
**WELL LOCATION AND ACREAGE DEDICATION PLAT**

Form C-102  
 Supersedes C-128  
 Effective 1-1-65

All distances must be from the outer boundaries of the Section.

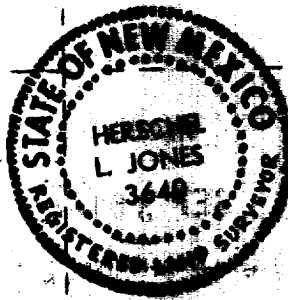
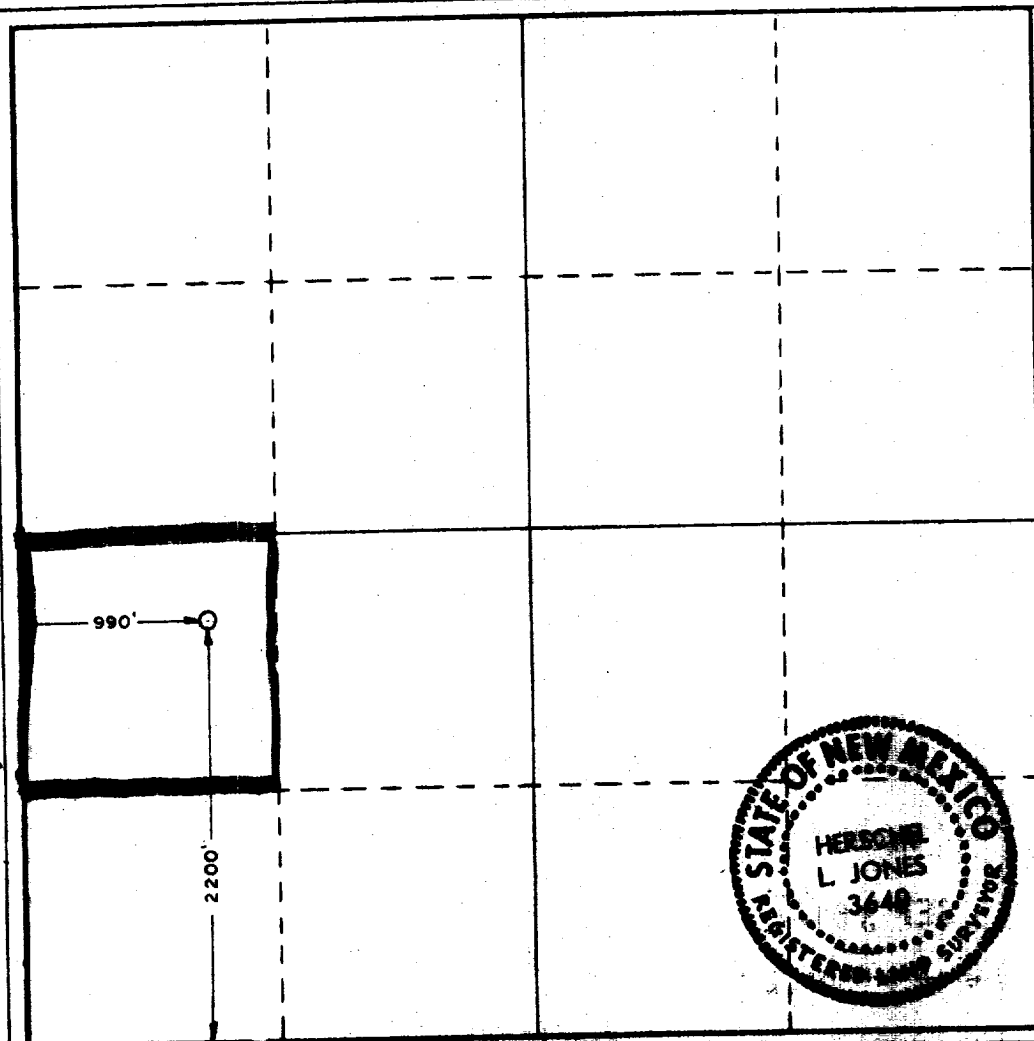
Operator <b>EL RAN, INC.</b>		Lease <b>Dachner</b>		Well No. <b>6</b>
Unit Letter <b>L</b>	Section <b>3</b>	Township <b>8 South</b>	Range <b>32 East</b>	County <b>Chaves</b>
Actual Footage Location of Well: <b>990</b> feet from the <b>West</b> line and <b>2200</b> feet from the <b>South</b> line				
Ground Level Elev. <b>4488.0</b>	Producing Formation <b>San Andres</b>	Pool <b>Chaveroo</b>	Dedicated Acreage: <b>40</b> Acres	

1. Outline the acreage dedicated to the subject well by colored pencil or hatchure marks on the plat below.
2. If more than one lease is dedicated to the well, outline each and identify the ownership thereof (both as to working interest and royalty).
3. If more than one lease of different ownership is dedicated to the well, have the interests of all owners been consolidated by communitization, unitization, force-pooling, etc?

☒ Yes    ☐ No    If answer is "yes," type of consolidation Federal Minerals

If answer is "no," list the owners and tract descriptions which have actually been consolidated. (Use reverse side of this form if necessary.) \_\_\_\_\_

No allowable will be assigned to the well until all interests have been consolidated (by communitization, unitization, forced-pooling, or otherwise) or until a non-standard unit, eliminating such interests, has been approved by the Commission.



**CERTIFICATION**

I hereby certify that the information contained herein is true and complete to the best of my knowledge and belief.

*Robert R. Ranck*

Name  
**Robert R. Ranck**  
 Position  
**Vice-President**  
 Company  
**El Ran, Inc.**  
 Date  
**July 7, 1980**

I hereby certify that the well location shown on this plat was plotted from field notes of actual surveys made by me or under my supervision, and that the same is true and correct to the best of my knowledge and belief.

Date Surveyed  
**6-19-80**  
 Registered Professional Engineer and/or Land Surveyor  
*[Signature]*  
 Certificate No.  
**3640**

RECEIVED

SEP 30 1980

OIL CONSERVATION DIV.

APPLICATION FOR DRILLING

EL RAN, INC.  
DACHNER FEDERAL #6  
Section 3, T8S, R32E  
Chaves County, New Mexico

In conjunction with Form 9-331 C, Application for Permit to Drill subject well, El Ran, Inc. submits the following ten items of pertinent information.

1. The geologic surface formation is the Ogallala formation.
2. The estimated tops of geologic markers are as follows:

Yates	2385'
San Andres	3458'
3. The depths at which anticipated water, oil or gas formations are expected to be encountered:

Water:	No data available. Probably from Triassic formation at approximately 500 to 600 feet.
Oil or Gas:	San Andres at approximately 3478 feet to 4400 feet.
4. Proposed casing program: See Form 9-331 C.
5. Pressure control equipment: See Exhibits C, D, and E.
6. Mud Program: See Form 9-331 C.
7. Auxiliary equipment: See Exhibit D.
9. Testing, logging and coring programs: None
10. Anticipated starting date: Middle of August  
Anticipated completion of drilling operations: Approximately 7 days after starting date.