

COPY TO O. C. C.

SUBMIT IN TR. L.CATE*

(Other instructions on
reverse side)Form approved.
Budget Bureau No. 42-R1425.UNITED STATES
DEPARTMENT OF THE INTERIOR
GEOLOGICAL SURVEY30-005-20765
5. LEASE DESIGNATION AND SERIAL NO.

NM 13999

6. IF INDIAN, ALLOTTEE OR TRIBE NAME

7. UNIT AGREEMENT NAME

8. FARM OR LEASE NAME

Federal

9. WELL NO.

#5

10. FIELD AND POOL, OR WILDCAT

Chaveroo

11. SEC., T., R., M., OR BLK.
AND SURVEY OR AREA

Sec. 3, T8S, R32E

12. COUNTY OR PARISH

13. STATE

Chaves

APPLICATION FOR PERMIT TO DRILL, DEEPEN, OR PLUG BACK

1a. TYPE OF WORK

DRILL ☒DEEPEN ☐PLUG BACK ☐

b. TYPE OF WELL

OIL

WELL ☒

GAS

WELL ☐OTHER ☐

SINGLE

ZONE ☒

MULTIPLE

ZONE ☐

2. NAME OF OPERATOR

El Ran, Inc.

3. ADDRESS OF OPERATOR

1603 Broadway, Lubbock, Texas 79401

4. LOCATION OF WELL (Report location clearly and in accordance with any State requirements.)*

At surface

990' FWL & 2200' ENL

At proposed prod. zone

14. DISTANCE IN MILES AND DIRECTION FROM NEAREST TOWN OR POST OFFICE*

20 Miles South of Elida, New Mexico

15. DISTANCE FROM PROPOSED*

LOCATION TO NEAREST

PROPERTY OR LEASE LINE, FT.

(Add to nearest drlg. unit line, if any)

330

16. NO. OF ACRES IN LEASE

160

17. NO. OF ACRES ASSIGNED
TO THIS WELL

40

18. DISTANCE FROM PROPOSED LOCATION*

TO NEAREST WELL, DRILLING, COMPLETED,
OR APPLIED FOR, ON THIS LEASE, FT.

775

19. PROPOSED DEPTH

4375

20. ROTARY OR CABLE TOOLS

Rotary

21. ELEVATIONS (Show whether DF, RT, GR, etc.)

4495.7 GR.

22. APPROX. DATE WORK WILL START*

September 15, 1980

23.

PROPOSED CASING AND CEMENTING PROGRAM

SIZE OF HOLE	SIZE OF CASING	WEIGHT PER FOOT	SETTING DEPTH	QUANTITY OF CEMENT
12 7/8	8 5/8	23#	1700	550
7 7/8	4 1/2	10.5#	4375	175

Mud Program: 10# Mud, 35 Viscosity from 4000' to TD

BOP Program: See Exhibits C, D, & E

RECEIVED

JUL 9 1980

U. S. GEOLOGICAL SURVEY
HOBBS, NEW MEXICO

IN ABOVE SPACE DESCRIBE PROPOSED PROGRAM: If proposal is to deepen or plug back, give data on present productive zone and proposed new productive zone. If proposal is to drill or deepen directionally, give pertinent data on subsurface locations and measured and true vertical depths. Give blowout prevention program, if any.

24.

SIGNED

TITLE

Agent

DATE

July 8, 1980

(This space for Federal or State office use)

PERMIT NO.

APPROVAL DATE

APPROVED BY

TITLE

DATE

CONDITIONS OF APPROVAL, IF ANY:

**N MEXICO OIL CONSERVATION COMMISSION
WELL LOCATION AND ACREAGE DEDICATION PLAT**

Form C-102
Supersedes C-128
Effective 1-1-65

All distances must be from the outer boundaries of the Section

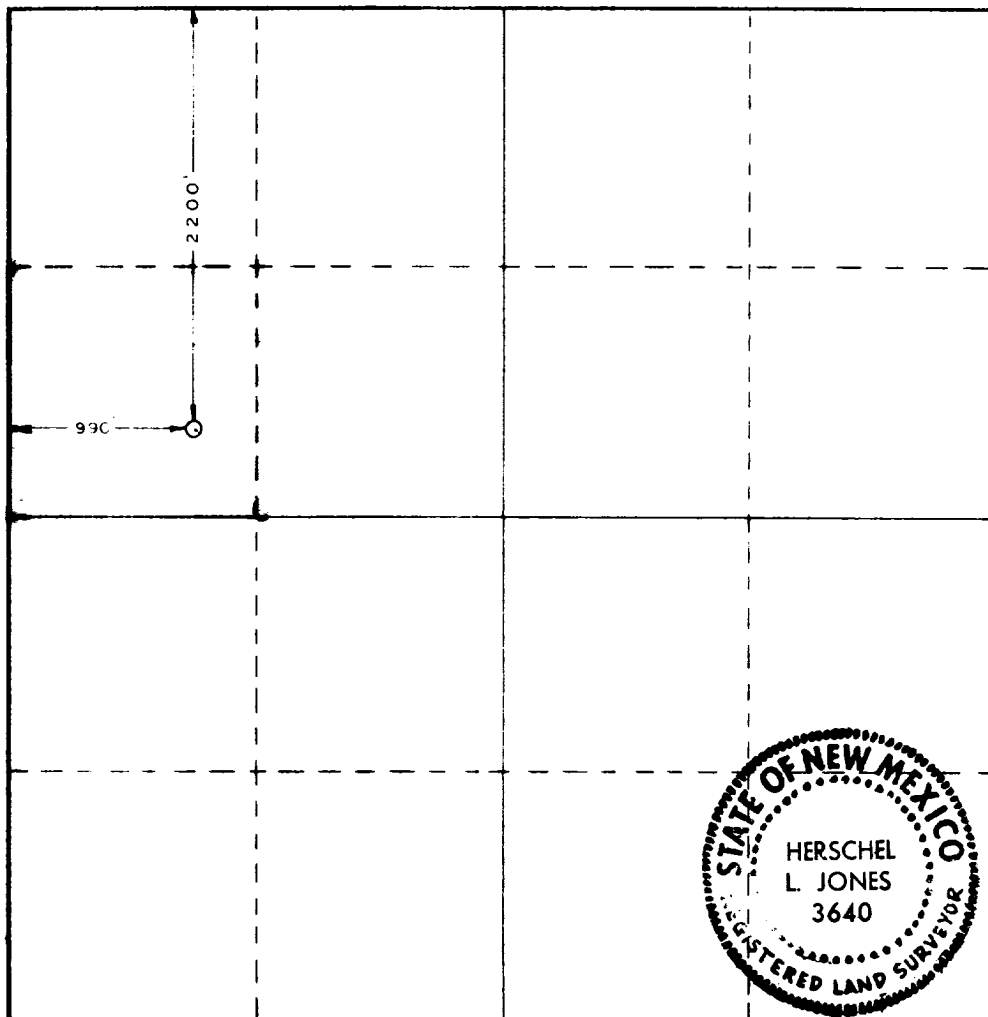
Operator EL RAN, INC.			Lease Federal		Well No. 5
Unit Letter E	Section 3	Township 8 South	Range 32 East	County Chaves	
Actual Footage Location of Well: <div style="display: flex; justify-content: space-between;"> 990 feet from the West line and 2200 feet from the North line </div>					
Ground Level Elev. 4495.7	Producing Formation San Andres	Pool Chaveroo		Dedicated Acreage: 40 Acres	

1. Outline the acreage dedicated to the subject well by colored pencil or hatchure marks on the plat below.
2. If more than one lease is dedicated to the well, outline each and identify the ownership thereof (both as to working interest and royalty).
3. If more than one lease of different ownership is dedicated to the well, have the interests of all owners been consolidated by communitization, unitization, force-pooling, etc?

☒ Yes ☐ No If answer is "yes," type of consolidation **Federal Minerals**

If answer is "no," list the owners and tract descriptions which have actually been consolidated. (Use reverse side of this form if necessary.) _____

No allowable will be assigned to the well until all interests have been consolidated (by communitization, unitization, forced-pooling, or otherwise) or until a non-standard unit, eliminating such interests, has been approved by the Commission.



CERTIFICATION

I hereby certify that the information contained herein is true and complete to the best of my knowledge and belief.

W. W. Ranck, Jr.

Name
W. W. Ranck, Jr.

Position
Vice-President

Company
El Ran, Inc.

Date
July, 8, 1980

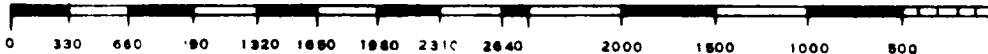
I hereby certify that the well location shown on this plat was plotted from field notes of actual surveys made by me or under my supervision, and that the same is true and correct to the best of my knowledge and belief.

Date Surveyed
6-19-80

Registered Professional Engineer and/or Land Surveyor

Herschel L. Jones

Certificate No.
3640



APPLICATION FOR DRILLING

EL RAN, INC.
FEDERAL #5
Section 3, T8S, R32E
Chavez County, New Mexico

In Conjunction with Form 9-331 C, Application for Permit to Drill subject well, El Ran, Inc. submits the following ten items of pertinent information.

1. The geologic surface formation is the Ogallala formation.
2. The estimated tops of geologic markers are as follows:
 Water
 San Andres
3. The depths at which anticipated water, oil or gas formations are expected to be encountered:
 Water: No data available. Probably from Triassic formation at approximately 500 to 600 feet.
 Oil or Gas: San Andres at approximately 3478 feet to 4325 feet.
4. Proposed casing program: See Form 9-331 C.
5. Pressure control equipment: See Exhibits C, D, and E.
6. Mud Program: See Form 9-331 C.
7. Auxiliary equipment: See Exhibit D.
8. Testing, logging and coring programs: None.
9. No abnormal temperatures or pressures are anticipated.
10. Anticipated starting date: Late August.
 Anticipated completion of drilling operations: Approximately 7 days after starting date.

Petroleum Information

© Copyrighted Reproduction Prohibited

COUNTY CHAVES FIELD Chaveroo STATE NM **AK**
 OPR EL RAN, INC. API 30-005-20765
 NO 5 LEASE Federal MAP
 Sec 3, T8S, R32E CO-ORD
 2200 FNL, 990 FWL of Sec 2-3-4 NM
 20 mi S/Elida SPD 11-20-80 CMP 12-3-80

CSC

8 5/8-1749-550 sx
 4 1/2-4325-175 sx

WELL CLASS: INIT D		FIN DO		LSE. CODE	
FORMATION	DATUM	FORMATION	DATUM		
TD 4325 (SADR)		PBD			

IP (San Andres) Perfs 4180-4304 F 93 BOPD. Pot based on 24
 hr test thru 1 chk. GOR 2419; gty (NR); CP 700; TP 325

CONTR WEK #3 OPR SELEV 4496 GL PD 4375 RT

F.R. 10-6-80
 (San Andres)
 12-15-80 Drlg 4200
 2-16-81 TD 4325; Complete
 Perf (San Andres) 4180-4304 w/16 shots (overall)
 No Treatment Reported
 2-21-81 COMPLETION ISSUED

2-3-4 NM
 IC 30-005-70207-80