

30-005-20785

NO. OF COPIES RECEIVED		
DISTRIBUTION		
DATE		
OFFICE		
EDITOR		

NEW MEXICO OIL CONSERVATION COMMISSION

Form C-101
Revised 1-1-65

5A. Indicate Type of Lease

STATE ☐ FEE ☒

5. State Oil & Gas Lease No.

APPLICATION FOR PERMIT TO DRILL, DEEPEN, OR PLUG BACK

Type of Work

DRILL ☒DEEPEN ☐PLUG BACK ☐

Type of Well

☒GAS
WELL ☐

OTHER

SINGLE
ZONE ☐MULTIPLE
ZONE ☐

Name of Operator

Yates Petroleum Corporation

Address of Operator

207 S. 4th St. Artesia, NM 88210

Location of Well

UNIT LETTER A LOCATED 660 FEET FROM THE North LINE660 FEET FROM THE East LINE OF SEC. 25 TWP. 7S RGE. 31E NMPM

7. Unit Agreement Name

8. Farm or Lease Name

Paul "LR"

9. Well No.

3

10. Field and Pool, or Wildcat

Undes. Tomahawk S.A.

~~San Juan~~

12. County

Chaves

19. Proposed Depth

Approx. 4200'

19A. Formation

San Andres

20. Rotary or C.T.

Rotary

21. Kind & Status Plug. Bond

4392.5

21A. Kind & Status Plug. Bond

Blanket

21B. Drilling Contractor

La Rue Drilling Co.

22. Approx. Date Work will start

ASAP

PROPOSED CASING AND CEMENT PROGRAM

SIZE OF HOLE	SIZE OF CASING	WEIGHT PER FOOT	SETTING DEPTH	SACKS OF CEMENT	EST. TOP
12½	8 5/8	24#	Approx. 1700	500	Circulated
7 7/8	4½	9.5#	TC	300	

We propose to drill and test the San Andres formation. If productive will run 4½" casing, perforate, and treat.

Mud Program: Native mud to 1700'. Fresh water to TD.

BOP Program: BOP's will be installed at 1700' and tested.

APPROVAL VALID FOR 180 DAYS
PERMIT EXPIRES 2/6/81
UNLESS DRILLING UNDERWAY

IF ABOVE SPACE DESCRIBE PROPOSED PROGRAM; IF PROPOSAL IS TO DEEPEN OR PLUG BACK, GIVE DATA ON PRESENT PRODUCTIVE ZONE AND PROPOSED NEW PRODUCTION. GIVE BLOWOUT PREVENTER PROGRAM, IF ANY.

I certify that the information above is true and complete to the best of my knowledge and belief.

Geographer Title Geographer Date 2-3-81

(This space for State Use)

APPROVED BY Jesse V. Clement TITLE OIL & GAS INSPECTOR DATE FEB 6 1981

EXPLANATIONS OF APPROVAL, IF ANY:

**MEXICO OIL CONSERVATION COMMISSION
WELL LOCATION AND ACREAGE DEDICATION PLAT**

Form C-102
Supersedes C-128
Effective 1-1-65

All distances must be from the outer boundaries of the Section.

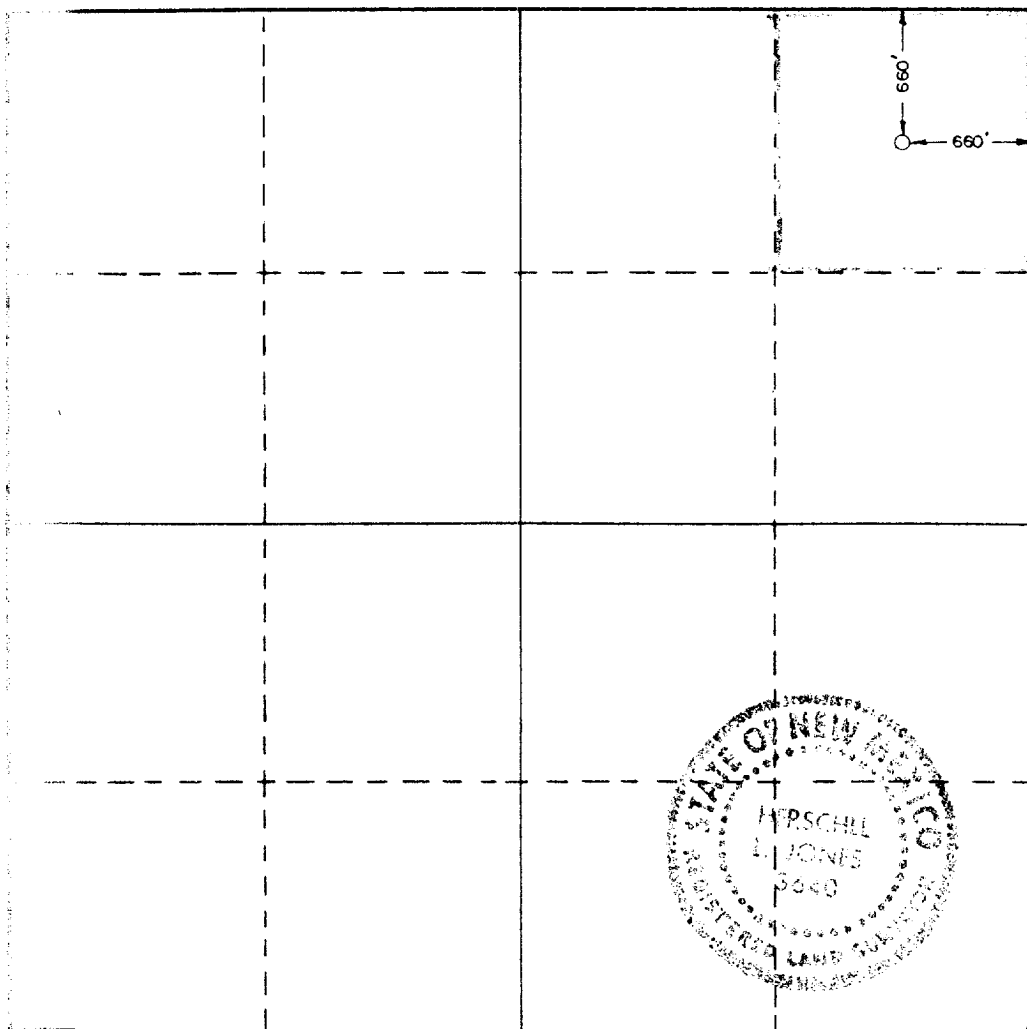
Operator Vates Petroleum Corp.			Lease Paul L-R		Well No. 3
Section Letter A	Section 25	Township 7 South	Range 31 East	County Chaves	

Footage Location of Well: 660 feet from the North line and 660 feet from the East line					
Level Elev. 392.5	Producing Formation SAN ANDES	Pool San-Jon Forn-HADUK SA.	Dedicated Acreage: 40 Acres		

1. Outline the acreage dedicated to the subject well by colored pencil or hachure marks on the plat below.
2. If more than one lease is dedicated to the well, outline each and identify the ownership thereof (both as to working interest and royalty).
3. If more than one lease of different ownership is dedicated to the well, have the interests of all owners been consolidated by communitization, unitization, force-pooling, etc?
☐ Yes ☐ No If answer is "yes," type of consolidation _____

If answer is "no," list the owners and tract descriptions which have actually been consolidated. (Use reverse side of this form if necessary.) _____

No allowable will be assigned to the well until all interests have been consolidated (by communitization, unitization, forced-pooling, or otherwise) or until a non-standard unit, eliminating such interests, has been approved by the Commission.



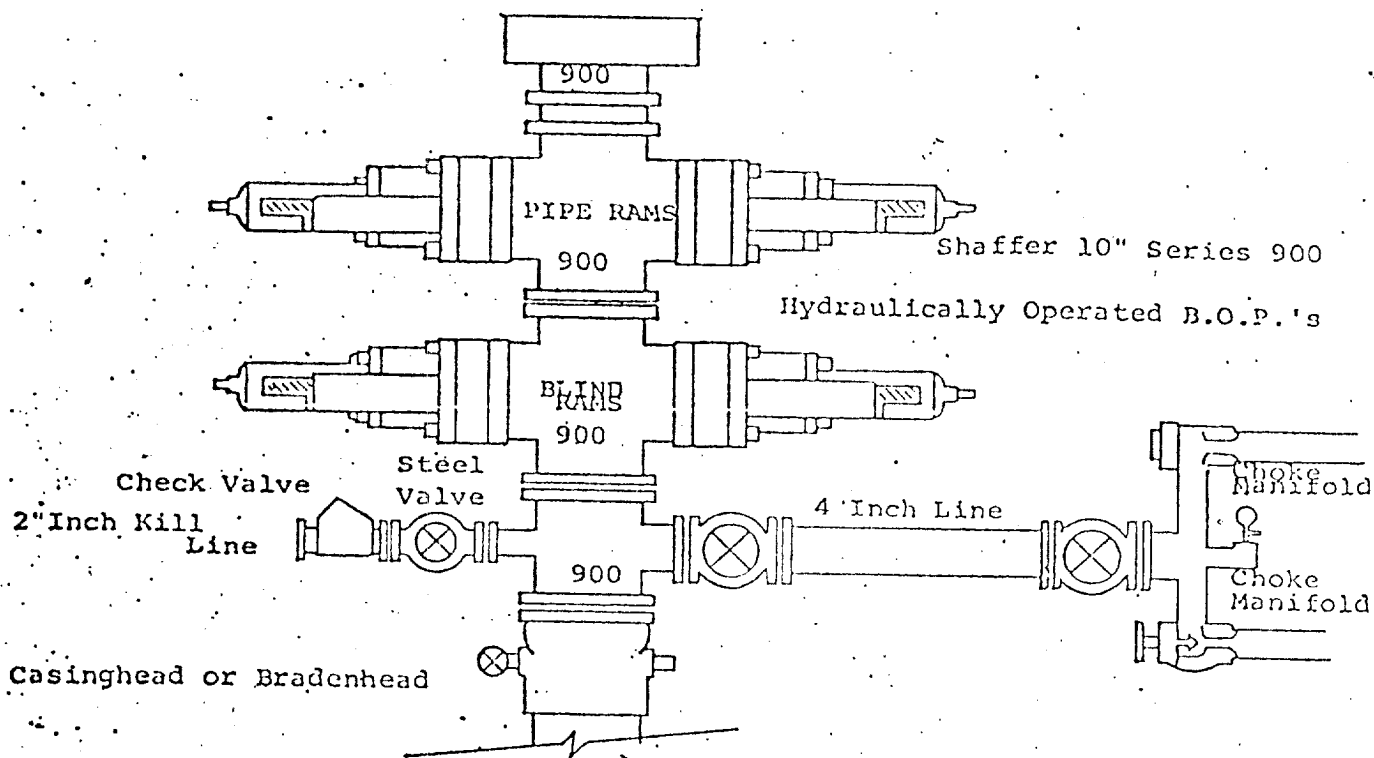
CERTIFICATION

I hereby certify that the information contained herein is true and complete to the best of my knowledge and belief.

Name GLISERIO RODRIGUEZ
Position GEOGRAPHER
Company VATES PETROLEUM CORP
Date 2-2-81

I hereby certify that the well location shown on this plat was plotted from field notes of actual surveys made by me or under my supervision, and that the same is true and correct to the best of my knowledge and belief.

Date Surveyed 1-14-81
Registered Professional Engineer and/or Land Surveyor Herschill Jones
Certificate No. 3640



THE FOLLOWING CONSTITUTE MINIMUM BLOWOUT PREVENTER REQUIREMENTS

1. All preventers to be hydraulically operated with secondary manual controls installed prior to drilling out from under casing.
2. Choke outlet to be a minimum of 4" diameter.
3. Kill line to be of all steel construction of 2" minimum diameter.
4. All connections from operating manifolds to preventers to be all steel. hole or tube a minimum of one inch in diameter.
5. The available closing pressure shall be at least 15% in excess of that required with sufficient volume to operate the B.O.P.'s.
6. All connections to and from preventer to have a pressure rating equivalent to that of the B.O.P.'s.
7. Inside blowout preventer to be available on rig floor.
8. Operating controls located a safe distance from the rig floor.
9. Hole must be kept filled on trips below intermediate casing. Operator not responsible for blowouts resulting from not keeping hole full.
10. D. P. float must be installed and used below zone of first gas intrusion.