

UNITED STATES
DEPARTMENT OF THE INTERIOR
GEOLOGICAL SURVEY30-005-20790
5. LEASE DESIGNATION AND SERIAL NO.

USA NM 13418

6. IF INDIAN, ALLOTTEE OR TRIBE NAME

7. UNIT AGREEMENT NAME

8. FARM OR LEASE NAME

Amoco Federal

9. WELL NO.

10

10. FIELD AND POOL, OR WILDCAT

Tom-Tom San Andres

11. SEC., T., R., M., OR BLK.
AND SURVEY OR AREA

Sec. 26, T-7-S, R-31-E

12. COUNTY OR PARISH

Chaves

13. STATE

New Mexico

APPLICATION FOR PERMIT TO DRILL, DEEPEN, OR PLUG BACK

1a. TYPE OF WORK

DRILL ☒DEEPEN ☐PLUG BACK ☐

b. TYPE OF WELL

OIL
WELL ☒GAS
WELL ☐

OTHER

SINGLE
ZONE ☐MULTIPLE
ZONE ☐

2. NAME OF OPERATOR

Flag-Redfern Oil Company

3. ADDRESS OF OPERATOR

P.O. Box 2280 Midland, Texas 79702

4. LOCATION OF WELL (Report location clearly and in accordance with any State requirements.)*

At surface

990' FSL and 990' FEL

At proposed prod. zone

Same

14. DISTANCE IN MILES AND DIRECTION FROM NEAREST TOWN OR POST OFFICE*

17 miles East of Elkins, New Mexico

15. DISTANCE FROM PROPOSED*

LOCATION TO NEAREST
PROPERTY OR LEASE LINE, FT.
(Also to nearest drlg. unit line, if any)

990'

16. NO. OF ACRES IN LEASE

480

17. NO. OF ACRES ASSIGNED
TO THIS WELL

40

18. DISTANCE FROM PROPOSED LOCATION*
TO NEAREST WELL, DRILLING, COMPLETED,
OR APPLIED FOR, ON THIS LEASE, FT.

999.4'

19. PROPOSED DEPTH

4150'

20. ROTARY OR CABLE TOOLS

Rotary

21. ELEVATIONS (Show whether DF, RT, GR, etc.)

4373 GR

22. APPROX. DATE WORK WILL START*

March 19, 1981

23.

PROPOSED CASING AND CEMENTING PROGRAM

SIZE OF HOLE	SIZE OF CASING	WEIGHT PER FOOT	SETTING DEPTH	QUANTITY OF CEMENT
11"	8-5/8"	24# J-55	1650'	800 sx. CIRCULATE
7-7/8"	4-1/2"	9.50# K-55	4150'	250 sx.

Drill 11" hole to 1650' or into the Rustler Anhydrite formation. Run 8-5/8" casing and circulate cement using 600 sx. of Halliburton light weight with 1/2 lb/sx. flocele and 8 lb/sx. of salt followed by 200 sx. of Class "C" w/2% CaCl. Wait on cement 12 hours and test casing to 600 psig. Drill 7-7/8" hole to approximately 4150'. Run Sidewall Neutron Porosity log. Run 4-1/2" casing to TD and cement with 250 sx. of 50-50 Pozmix "A" - Class "H" w/2% gel, 0.75% CFR-2 and 8 lb/sx. of salt. Wait on cement a minimum of 12 hours. Test 4-1/2" casing to 1500 psig. Run correlation logs and perforate the San Andres formation. Treat with acid. Swab to test. Potential test well.

IN ABOVE SPACE DESCRIBE PROPOSED PROGRAM: If proposal is to deepen or plug back, give data on present productive zone and proposed new productive zone. If proposal is to drill or deepen directionally, give pertinent data on subsurface locations and measured and true vertical depths. Give blowout preventer program, if any.

24.

SIGNED

TITLE Engineer

DATE 2-25-81

(This space for Federal or State office use)

PERMIT NO.

GEORGE H. STEWART

APPROVAL DATE

APPROVED BY

CONDITIONS OF APPROVAL, IF ANY:

TITLE

DATE

DRILL SALT BEDS USING BRINE.

NEW MEXICO OIL CONSERVATION COMMISSION
WELL LOCATION AND ACREAGE DEDICATION PLAT

Form C-122
Supersedes C-128
Effective 1-1-65

All distances must be from the outer boundaries of the Section

Operator FLAG-REDFERN OIL COMPANY		Lease AMOCO-FEDERAL		Well No. 10
Section P	Section 26	Township 7-S	Range 31-E	County CHAVES
Actual Footage Location of Well: 990 feet from the EAST line and 990 feet from the SOUTH line				
Ground Level Elev. 4373	Producing Formation San Andres	Pool Tom-Tom (San Andres)	Dedicated Acreage 40	

1. Outline the acreage dedicated to the subject well by colored pencil or hatchure marks on the plat below.
2. If more than one lease is dedicated to the well, outline each and identify the ownership thereof (both as to working interest and royalty).
3. If more than one lease of different ownership is dedicated to the well, have the interests of all owners been consolidated by communitization, unitization, force-pooling, etc?

☐ Yes ☐ No If answer is "yes," type of consolidation _____

If answer is "no," list the owners and tract descriptions which have actually been consolidated. (Use reverse side of this form if necessary.) _____

No allowable will be assigned to the well until all interests have been consolidated (by communitization, unitization, forced-pooling, or otherwise) or until a non-standard unit, eliminating such interests, has been approved by the Commission.

SECTION 26, Twp. 7-S, Rng. 31-E			
<div style="position: relative; width: 100%; height: 100%;"> <div style="position: absolute; bottom: 10px; right: 10px; border: 1px solid black; padding: 5px;"> 10 990' 990' </div> </div>			

CERTIFICATION

I hereby certify that the information contained herein is true and complete to the best of my knowledge and belief.

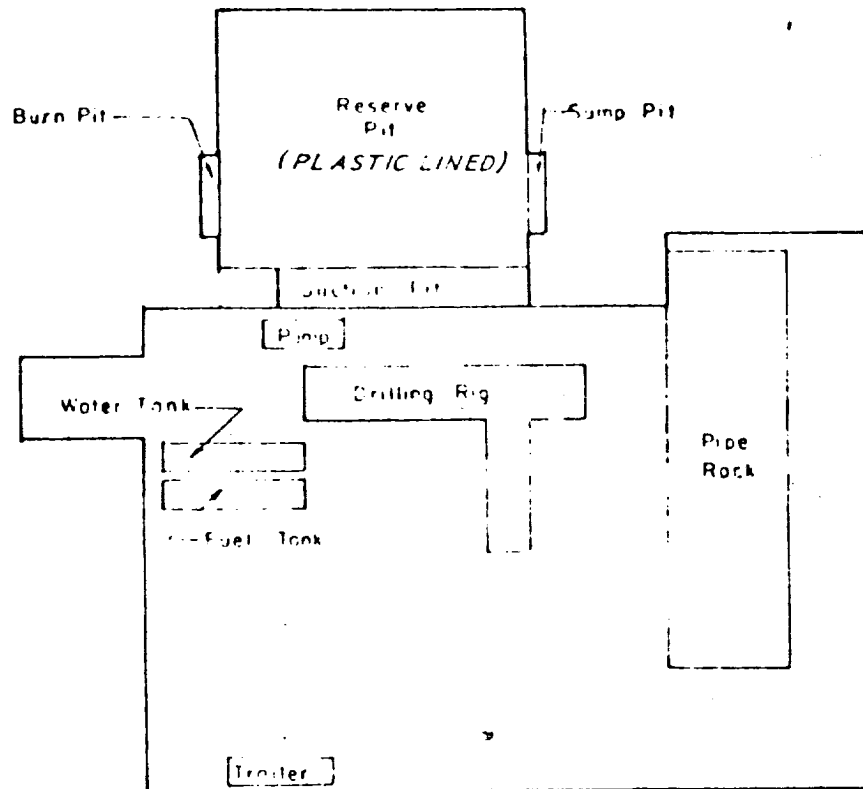
Name
John E. Scherer
Position
Engineer
Company
Flag-Redfern Oil Company
Date
February 26, 1981

I hereby certify that the well location shown on this plat was plotted from field notes of actual surveys made by me or under my supervision, and that the same is true and correct to the best of my knowledge and belief.

Date Surveyed
FEB. 12, 1981

Registered Professional Engineer and/or Land Surveyor

[Signature]



Flag-Nedfern Oil Company

WELL SITE LAYOUT

Well No. AMOCO FED LSE
 FSL & FEL, Sec 26 T.27-S. R.31 E
 CHAVES County, New Mexico