

UNITED STATES
DEPARTMENT OF THE INTERIOR
GEOLOGICAL SURVEYCOPY
SUBMIT IN TRIPLICATE
(Other instructions on
reverse side)Form approved.
Budget Bureau No. 42-R1425.

30-005-20993

APPLICATION FOR PERMIT TO DRILL, DEEPEN, OR PLUG BACK

1a. TYPE OF WORK

DRILL ☒DEEPEN ☐PLUG BACK ☐

b. TYPE OF WELL

OIL
WELL ☒GAS
WELL ☐

OTHER

SINGLE
ZONE ☒MULTIPLE
ZONE ☐

2. NAME OF OPERATOR

Western Reserves Oil Company

3. ADDRESS OF OPERATOR

P. O. Box 993 Midland, Texas 79702

4. LOCATION OF WELL (Report location clearly and in accordance with any State requirements.)*

At surface

Section 34, T-7-S R-31-E 990' FWL & 1650' FNL

At proposed prod. zone 3950'±

14. DISTANCE IN MILES AND DIRECTION FROM NEAREST TOWN OR POST OFFICE*

12 miles south of Kenna, New Mexico

16. DISTANCE FROM PROPOSED* LOCATION TO NEAREST PROPERTY OR LEASE LINE, FT.

(Also to nearest drg. unit line, if any) Sec. 34 T7S, R31E

16. NO. OF ACRES IN LEASE

280

18. DISTANCE FROM PROPOSED LOCATION*

TO NEAREST WELL, DRILLING, COMPLETED, OR APPLIED FOR, ON THIS LEASE, FT.

19. PROPOSED DEPTH

4150'±

17. NO. OF ACRES ASSIGNED TO THIS WELL

40

20. ROTARY OR CABLE TOOLS

Rotary

21. ELEVATIONS (Show whether DF, RT, GR, etc.)

4313.1 GR

22. APPROX. DATE WORK WILL START*

4/15/81

23.

PROPOSED CASING AND CEMENTING PROGRAM

SIZE OF HOLE	SIZE OF CASING	WEIGHT PER FOOT	SETTING DEPTH	QUANTITY OF CEMENT
12 1/4"	8 5/8"	24#	1640'±	650 sx (Cement Circulated)
7 7/8"	4 1/2"	10.5#	4150'±	300 sx

BOP

10" API Series 900 Type "B" Blowout Preventer with 4 1/2" pipe rams. Hydraulic operated 6000 psi test.

IN ABOVE SPACE DESCRIBE PROPOSED PROGRAM: If proposal is to deepen or plug back, give data on present productive zone and proposed new productive zone. If proposal is to drill or deepen directionally, give pertinent data on subsurface locations and measured and true vertical depths. Give blowout preventer program, if any.

24.

SIGNED

TITLE Agent

DATE 4/1/81

(This space for Federal or State office use)

PERMIT NO.

APPROVAL DATE

APPROVED BY

TITLE

DATE

CONDITIONS OF APPROVAL, IF ANY:

APR 9 1981

JAMES A. GILLHAM
DISTRICT SUPERVISOR

*See Instructions On Reverse Side

Drill to 1650' with Fresh water mud.

APR - 3 1981

RECEIVED

APR 20 '81

OIL CONSERVATION DIV.

NEW MEXICO OIL CONSERVATION COMMISSION
WELL LOCATION AND ACREAGE DEDICATION PLAT

Form C-102
Supersedes C-128
Effective 1-1-65

All distances must be from the outer boundaries of the Section

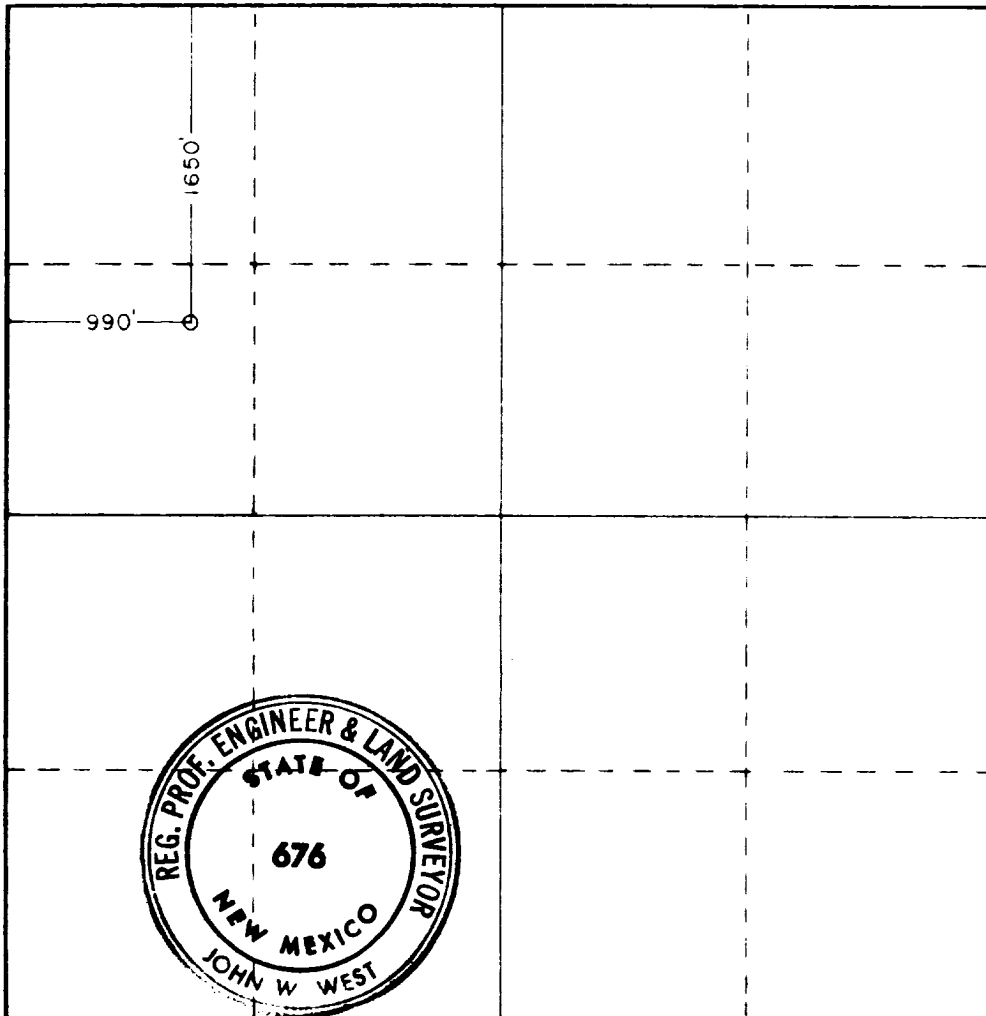
Operator Western Reserves Oil Co.			Lease Mountain Federal		Well No. 5
Unit Letter E	Section 34	Township 7South	Range 31East	County Chaves	
Actual Footage Location of Well: 1650 feet from the North line and 990 feet from the West line					
Ground Level Elev. 4313.1'	Producing Formation San Andres		Pool Tom-Tom		Dedicated Acreage: 40 Acres

1. Outline the acreage dedicated to the subject well by colored pencil or hatchure marks on the plat below.
2. If more than one lease is dedicated to the well, outline each and identify the ownership thereof (both as to working interest and royalty).
3. If more than one lease of different ownership is dedicated to the well, have the interests of all owners been consolidated by communitization, unitization, force-pooling, etc?

☐ Yes ☐ No If answer is "yes," type of consolidation _____

If answer is "no," list the owners and tract descriptions which have actually been consolidated. (Use reverse side of this form if necessary.) _____

No allowable will be assigned to the well until all interests have been consolidated (by communitization, unitization, forced-pooling, or otherwise) or until a non-standard unit, eliminating such interests, has been approved by the Commission.



CERTIFICATION

I hereby certify that the information contained herein is true and complete to the best of my knowledge and belief.

Name *Serry Franklin*
Position
Agent
Company
Western Reserves Oil Co.
Date
3/17/81

I hereby certify that the well location shown on this plat was plotted from field notes of actual surveys made by me or under my supervision, and that the same is true and correct to the best of my knowledge and belief.

Date Surveyed
Mar. 11, 1981

Registered Professional Engineer and/or Land Surveyor

Schmidt West

Certificate No **JOHN W. WEST 676**
PATRICK A. ROMERO 6663
Ronald J. Eidson 3239

