

RECEIVED	
DATE	
SANTA FE	
FILL	
U.S.G.S.	
LAND OFFICE	
OPERATOR	

5A. Indicate Type of Lease	
STATE <input type="checkbox"/>	FEE <input checked="" type="checkbox"/>
5. State Oil & Gas Lease No.	

## APPLICATION FOR PERMIT TO DRILL, DEEPEN, OR PLUG BACK

1a. Type of Work

DRILL ☒DEEPEN ☐PLUG BACK ☐

b. Type of Well

OIL WELL ☒GAS WELL ☐

OTHER

SINGLE ZONE ☒MULTIPLE ZONE ☐

2. Name of Operator

AIKMAN PETROLEUM, INC.

3. Address of Operator

716 Western United Life Bldg., Midland, Texas 79701

4. Location of Well

UNIT LETTER E LOCATED 1900 FEET FROM THE North LINE

AND 660

FEET FROM THE West LINE OF SEC. 8 TWP. 8 - S RGE. 30 - E NMPM

7. Unit Agreement Name

8. Farm or Lease Name

Sanders

9. Well No.

1

10. Field and Pool, or Wildcat

Lightcap Devonian

12. County

Chaves

11. Elevations (Show whether DF, RT, etc.)

4047 ft. KB (GL + 12)

21A. Kind &amp; Status Plug. Bond

\$50,000 State Blanket

19. Proposed Depth

8,000 ft.

19A. Formation

Devonian

20. Rotary or C.T.

Rotary

21B. Drilling Contractor

Kenai (Rig 15)

22. Approx. Date Work will start

July 8, 1981

23.

## PROPOSED CASING AND CEMENT PROGRAM

SIZE OF HOLE	SIZE OF CASING	WEIGHT PER FOOT	SETTING DEPTH	SACKS OF CEMENT	EST. TOP
17-1/2"	13-3/8"	48# H-40	450 ft. +	475	Circ. to Surf.
12-1/4"	-	-	1800 or B/salt	-	Reduce Hole Size
11"	8-5/8"	24# K-55	2600 ft. ±	975	Circ. to Surf.
7-7/8"	4-1/2"	11.6# K-55	8000 Ft. ±	435	6500 ft.

Note: At depth of 1800 ft. or base of salt, reduce hole size to 11", and nipple up 10" X 3000 Shafer LWS BOP.

After setting 8-5/8" Intermediate casing & cementing same, nipple up 10" X 3000 Shafer LWS BOP with 10" X 3000 Hydril rotating BOP on top of stack.

APPROVAL VALID FOR 180 DAYS  
PERMIT EXPIRES 1/7/82  
UNLESS DRILLING UNDERWAY

IN ABOVE SPACE DESCRIBE PROPOSED PROGRAM; IF PROPOSAL IS TO DEEPEN OR PLUG BACK, GIVE DATA ON PRESENT PRODUCTIVE ZONE AND PROPOSED NEW PRO-  
DUCTIVE ZONE. GIVE FLOWOUT PREVENTER PROGRAM, IF ANY.

I hereby certify that the information above is true and complete to the best of my knowledge and belief.

Signed John A. Sheldon Title Consulting PE Date 6/29/81

(This space for State Use)

APPROVED BY

TITLE

SUPERVISOR DISTRICT I

DATE

JUL 7 1981

CONDITIONS OF APPROVAL, IF ANY:

NEW MEXICO OIL CONSERVATION COMMISSION  
WELL LOCATION AND ACREAGE DEDICATION PLAT

Supervisor  
District

All distances must be from the outer boundaries of the Section.

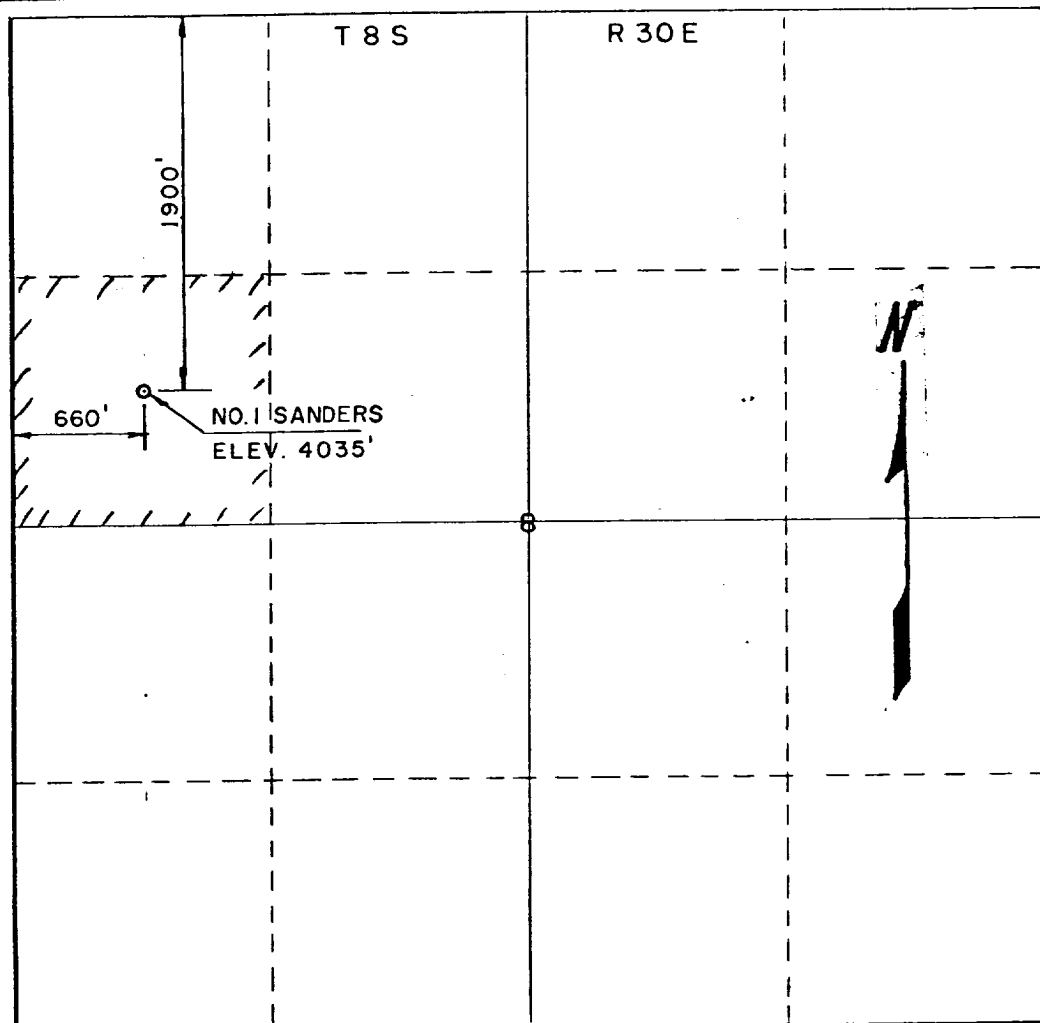
Owner <b>AIKMAN PETROLEUM, INC.</b>			Lease <b>Sanders</b>		Well No. <b>1</b>
Quarter <b>E</b>	Section <b>8</b>	Township <b>8-S</b>	Range <b>30-E</b>	County <b>Chaves</b>	
Actual Footage Location of Well: <b>1900</b> feet from the <b>NORTH</b> line and <b>660</b> feet from the <b>WEST</b> line					
Ground Level Elev. <b>4035</b>	Producing Formation <b>Devonian</b>		Foot <b>Lightcap Devonian</b>		Dedicated Acreage: <b>40</b> Acres

- Outline the acreage dedicated to the subject well by colored pencil or hatchure marks on the plat below.
- If more than one lease is dedicated to the well, outline each and identify the ownership thereof (both as to working interest and royalty).
- If more than one lease of different ownership is dedicated to the well, have the interests of all owners been consolidated by communitization, unitization, force-pooling, etc?

☐ Yes ☐ No If answer is "yes," type of consolidation \_\_\_\_\_

If answer is "no," list the owners and tract descriptions which have actually been consolidated. (Use reverse side of this form if necessary.) \_\_\_\_\_

No allowable will be assigned to the well until all interests have been consolidated (by communitization, unitization, forced-pooling, or otherwise) or until a non-standard unit, eliminating such interests, has been approved by the Commission.



CERTIFICATION

I hereby certify that the information contained herein is true and complete to the best of my knowledge and belief.

*John A. Sheldon*  
Name

John A. Sheldon

Position

Consulting Pet. Engr.

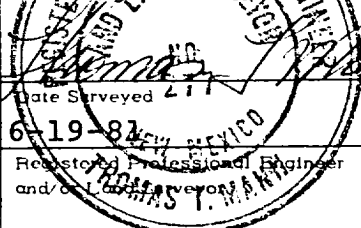
Company

Aikman Petroleum, Inc.

Date

6-29-81

I hereby certify that the well location shown on this plat was plotted from field notes of actual surveys made by me or under my supervision and that the same is true and correct to the best of my knowledge and belief.



Date Surveyed 6-19-81

Registered Professional Engineer and Oil Well Surveyor

Thomas T. Mann, P.E. & L.S.

Certificate No.

N.M. License No. 277

JOHN A. SHELDON  
INDEPENDENT GEOLOGIST & PETROLEUM ENGINEER  
DRAWER 4787 MIDLAND, TEXAS  
June 29, 1981

New Mexico Oil Conservation Commission  
District 1 - Hobbs

Re: Aikman No.1 Sanders  
1900' FNL & 660' FWL  
8 - T8S - R30E  
Chaves Co., N.M.

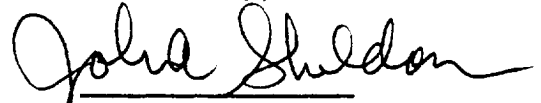
Gentlemen:

The well captioned above was originally staked by Mann Engineering at a location - 1980' FNL & 660' FWL in Section 8. A well traveled caliche road which is reported as County Maintained traverses said well location in a northwest - southeast direction. Said road connects and joins the well known Railroad Mtn. dike road on the north with the main traveled road passing down through the Cato San Andres Pool southward by the Crosby ranch house and to the Tatum - Roswell highway to the south. In an effort not to obstruct traffic on this road, I had to move the stake 80' to the north and rotate the well pad 45°, with pits located on the northeast. Mann Engineering revised their Location Plat to show the correct location.

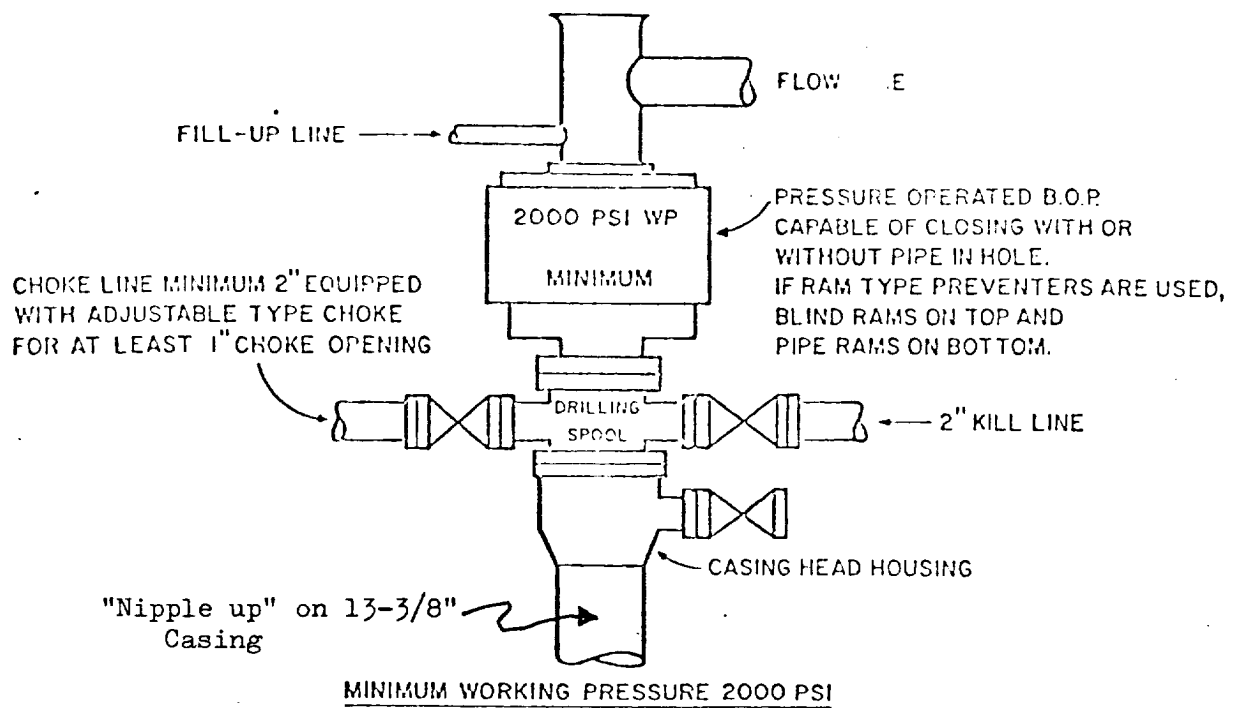
It is on the basis of the above information, we ask you to approve said well location. Aikman Petroleum, Inc. leases cover all of the Northwest quarter of Section 8, T8S - R30E.

With kindest regards,

Yours truly,

  
John A. Sheldon

cc. 1 - file



#### CONTRACTOR TO FURNISH

1. ALL EQUIPMENT EXCEPT CASING-HEAD HOUSING AND SIDE VALVES.
2. B.O.P. CONTROLS.
3. RAMS FOR DRILLPIPE AND CASING IN HOLE.
4. BLIND RAMS.

#### COMPANY TO FURNISH

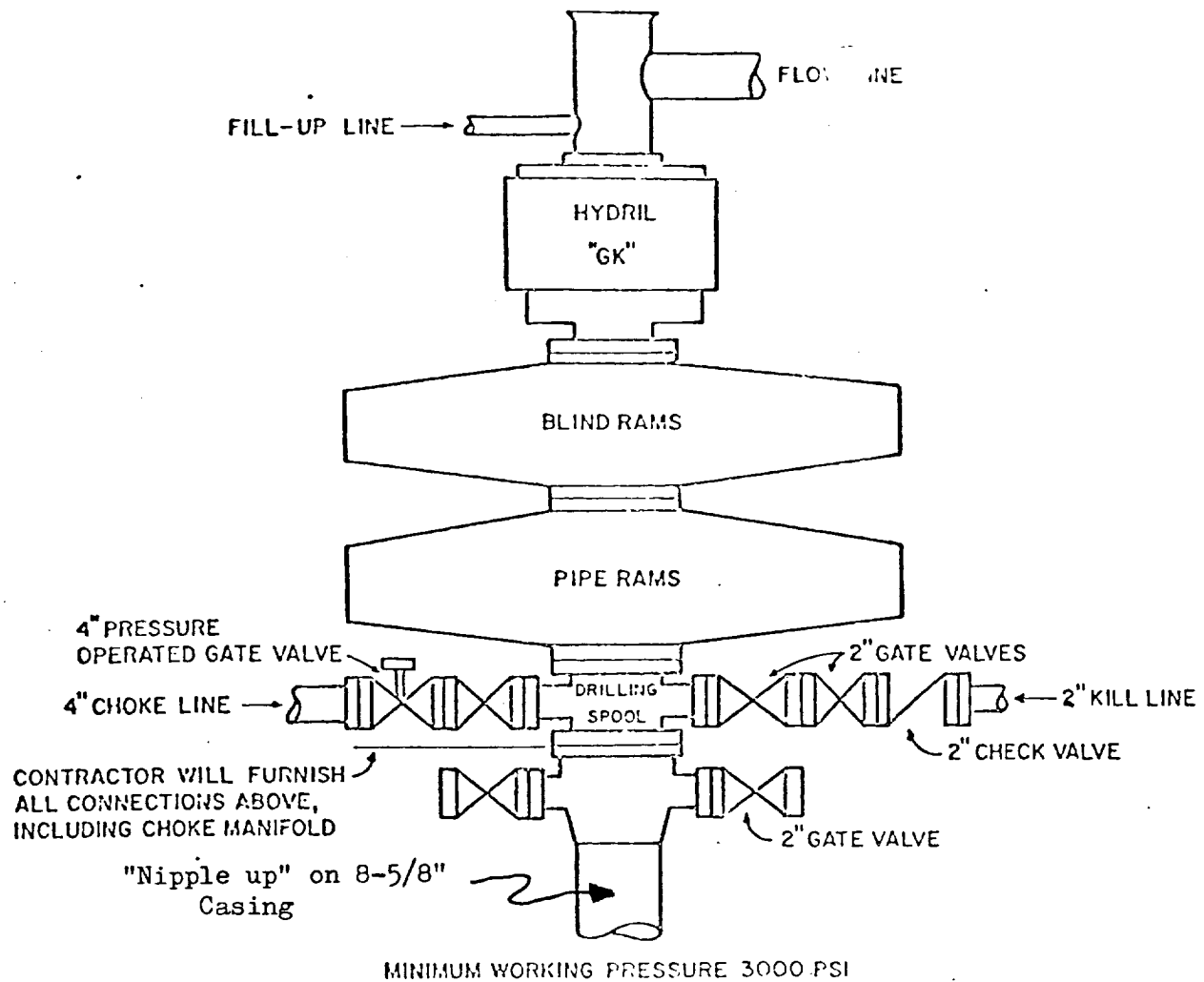
1. CASING HEAD HOUSING
2. WEARBUSHING, IF REQUIRED.

#### GENERAL NOTES

1. ALL VALVES, PIPING, FLANGES ETC. MUST HAVE MINIMUM WORKING PRESSURE EQUAL TO RATED WORKING PRESSURE OF PREVENTERS.
2. CONTROLS TO BE STANDARD DESIGN AND EACH MARKED, SHOWING OPEN AND CLOSED POSITION.
3. CHOKES WILL BE POSITIONED SO AS NOT TO HAMPER CHANGING OF CHOKES BEANS, BEANS, RETAINERS, AND WRENCHES TO BE CONVENIENTLY LOCATED FOR IMMEDIATE USE.
4. ALL VALVES TO BE EQUIPPED WITH HANDWHEELS.
5. CHOKES MUST BE SUITABLY ANCHORED.
6. DEVIATIONS FROM THIS DRAWING MAY BE MADE ONLY WITH PERMISSION OF THE COMPANY.

### MINIMUM BLOWOUT PREVENTER REQUIREMENTS

#### LOW PRESSURE SERVICE



#### CONTRACTED TO FURNISH

1. ALL EQUIPMENT ABOVE CASING HEAD HOUSING INCLUDING CHOKE MANIFOLD.
2. INDEPENDENT AUTOMATIC ACCUMULATOR 3000 PSI WP.
3. B.O.P. CONTROLS TO BE LOCATED NEAR DRILLER'S POSITION AND AT SAFE DISTANCE FROM THE WELL.
4. SPARE SET PIPE RAMS TO FIT PIPE IN USE.

#### COMPANY TO FURNISH

1. WELLHEAD EQUIPMENT.
2. WEAR BUSHING, IF REQUIRED.

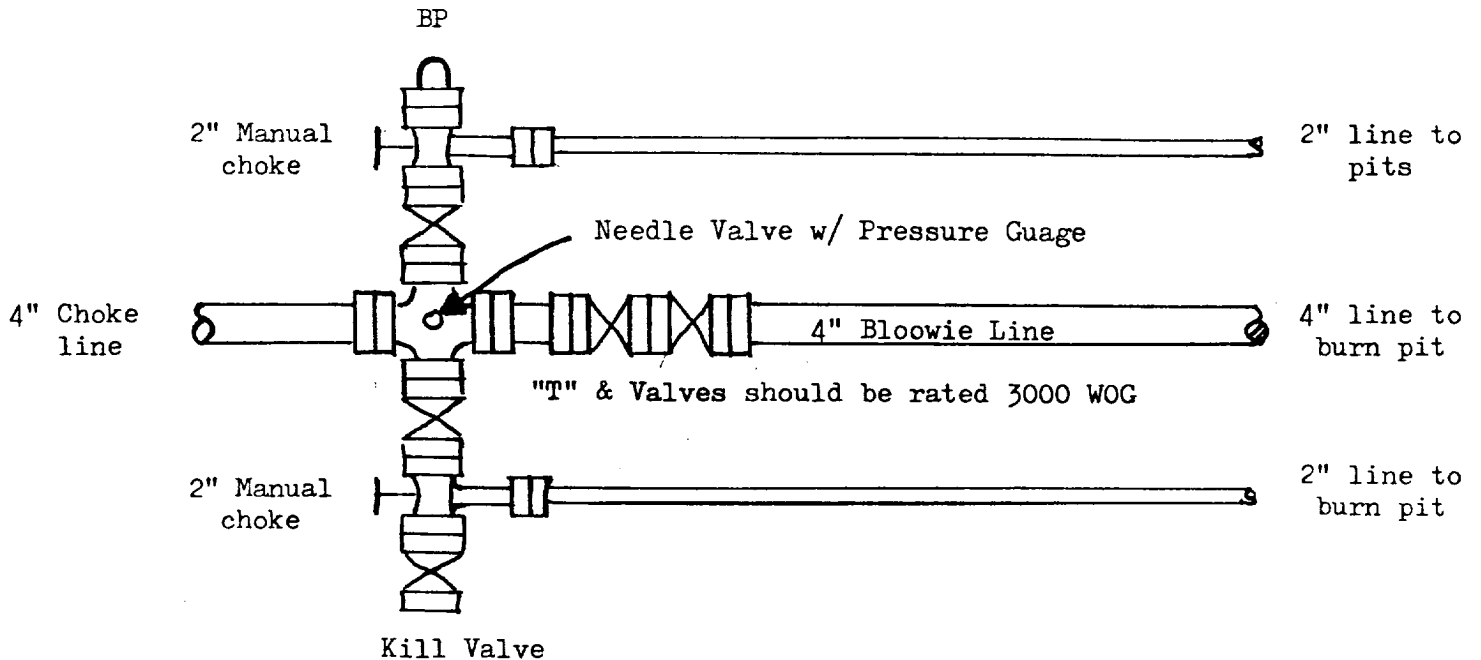
#### GENERAL NOTES

1. ALL VALVES, PIPING, FLANGES ETC. MUST HAVE MINIMUM WORKING PRESSURE EQUAL TO WORKING PRESSURE OF PREVENTERS. VALVES MUST BE OF THE FULL OPENING TYPE.
2. CONTROLS TO BE OF STANDARD DESIGN AND EACH MARKED SHOWING OPEN AND CLOSED POSITION.
3. CHOKE MANIFOLD AS SHOWN IN APP. 18 AND 19 REPLACEABLE PARTS AND WRENCHES TO BE CONVENIENTLY LOCATED FOR IMMEDIATE USE.
4. ALL VALVES TO BE EQUIPPED WITH HANDWHEELS.
5. CHOKE LINES MUST BE SUITABLY ANCHORED.
6. DEVIATIONS FROM THIS DRAWING MAY BE MADE ONLY WITH THE PERMISSION OF THE COMPANY.

### MINIMUM BLOWOUT PREVENTER REQUIREMENTS

#### NORMAL PRESSURE SERVICE

CHOKE MANIFOLD SETUP



The above Manifold Hookup Design will meet minimum requirement by the Operator. Drilling Contractor to supply choke line and choke manifold. Operator to supply downstream lines from manifold assembly to pits.

