

NO. OF COPIES RECEIVED	
DISTRIBUTION	
SANTA FE	
FILE	
U.S.G.S.	
LAND OFFICE	
OPERATOR	

5A. Indicate Type of Lease
STATE ☐ FEE ☒

5. State Oil & Gas Lease No.

APPLICATION FOR PERMIT TO DRILL, DEEPEN, OR PLUG BACK

a. Type of Work
DRILL ☒ DEEPEN ☐ PLUG BACK ☐

b. Type of Well
OIL WELL ☒ GAS WELL ☐ OTHER ☐ SINGLE ZONE ☐ MULTIPLE ZONE ☐

6. Name of Operator
Yates Petroleum Corporation

7. Unit Agreement Name

8. Farm or Lease Name
Paul "LR"

9. Well No.
6

10. Field and Pool, or Wildcat
Undes. Tomahawk S.A.

11. Address of Operator
207 South 4th Street, Artesia, NM 88210

12. Location of Well
UNIT LETTER C LOCATED 660 FEET FROM THE North LINE
NO. 1980 FEET FROM THE West LINE OF SEC. 25 TWP. 7s RGE. 31e NMPM

12. County
Chaves

19. Proposed Depth
Approx 4200'

19A. Formation
San Andres

20. Rotary or C.T.
Rotary

21A. Kind & Status Plug. Bond
Blanket

21B. Drilling Contractor
LaRue Drilling Co.

22. Approx. Date Work will start
ASAP

Elevations (Show whether DF, KT, etc.)
4380' GL

PROPOSED CASING AND CEMENT PROGRAM

SIZE OF HOLE	SIZE OF CASING	WEIGHT PER FOOT	SETTING DEPTH	SACKS OF CEMENT	EST. TOP
12 1/2"	8 5/8"	24#	Approx 1700'	500	Circulate
7 7/8"	4 1/2"	9.5#	TD	300	

We propose to drill and test the San Andres formation. If production will run 4 1/2" casing, perforate, and treat.

MUD PROGRAM: Native mud to 1700'. Fresh water to TD.

BOP PROGRAM: BOP's will be installed to 1700' and tested.

APPROVAL VALID FOR 180 DAYS
PERMIT EXPIRES 1/29/82
UNLESS DRILLING UNDERWAY

ABOVE SPACE DESCRIBE PROPOSED PROGRAM; IF PROPOSAL IS TO DEEPEN OR PLUG BACK, GIVE DATA ON PRESENT PRODUCTIVE ZONE AND PROPOSED NEW PRO-

by certify that the information above is true and complete to the best of my knowledge and belief.

Sharon Robinson Title Geographer Date 7-28-81
(This space for State Use)

APPROVED BY [Signature] TITLE SUPERVISOR DISTRICT DATE JUL 29 1981
CONDITIONS OF APPROVAL, IF ANY:

**NEW MEXICO OIL CONSERVATION COMMISSION
WELL LOCATION AND ACREAGE DEDICATION PLAT**

Form C-102
Supersedes C-128
Effective 1-1-65

All distances must be from the outer boundaries of the Section.

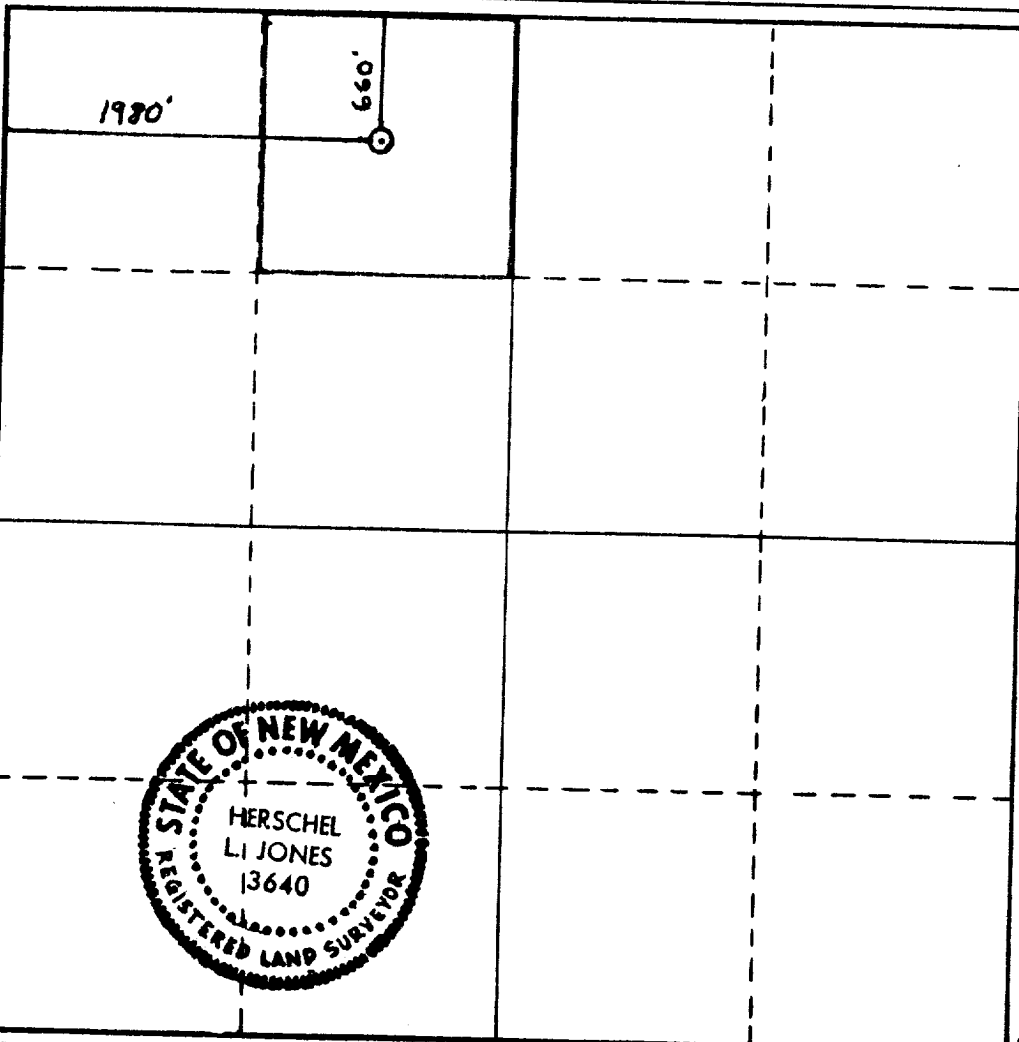
Operator YATES PETROLEUM CORPORATION			Lease PAUL "LR"		Well No. 6
Unit Letter C	Section 25	Township 7s	Range 31e	County CHAVES	
Actual Footage Location of Well: <div style="display: flex; justify-content: space-between;"> 1980' feet from the West line and 660' feet from the North </div>					
Ground Level Elev. 4380'	Producing Formation San Andres		Pool Undes Tomahawk S.A.	Dedicated Acreage: 40 Acres	

1. Outline the acreage dedicated to the subject well by colored pencil or hachure marks on the plat below.
2. If more than one lease is dedicated to the well, outline each and identify the ownership thereof (both as to working interest and royalty).
3. If more than one lease of different ownership is dedicated to the well, have the interests of all owners been consolidated by communitization, unitization, force-pooling, etc?

☐ Yes ☐ No If answer is "yes," type of consolidation _____

If answer is "no," list the owners and tract descriptions which have actually been consolidated. (Use reverse side of this form if necessary.) _____

No allowable will be assigned to the well until all interests have been consolidated (by communitization, unitization, forced-pooling, or otherwise) or until a non-standard unit, eliminating such interests, has been approved by the Commission.



CERTIFICATION

I hereby certify that the information contained herein is true and complete to the best of my knowledge and belief.

[Signature]
Name

Gliserio Rodriguez

Position

Regulatory Manager

Company

Yates Petroleum Corporation

Date

7-28-81

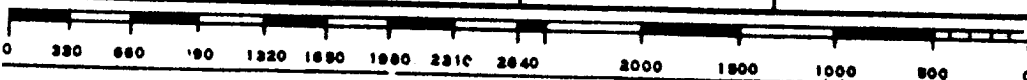
I hereby certify that the well location shown on this plat was plotted from field notes of actual surveys made by me or under my supervision, and that the same is true and correct to the best of my knowledge and belief.

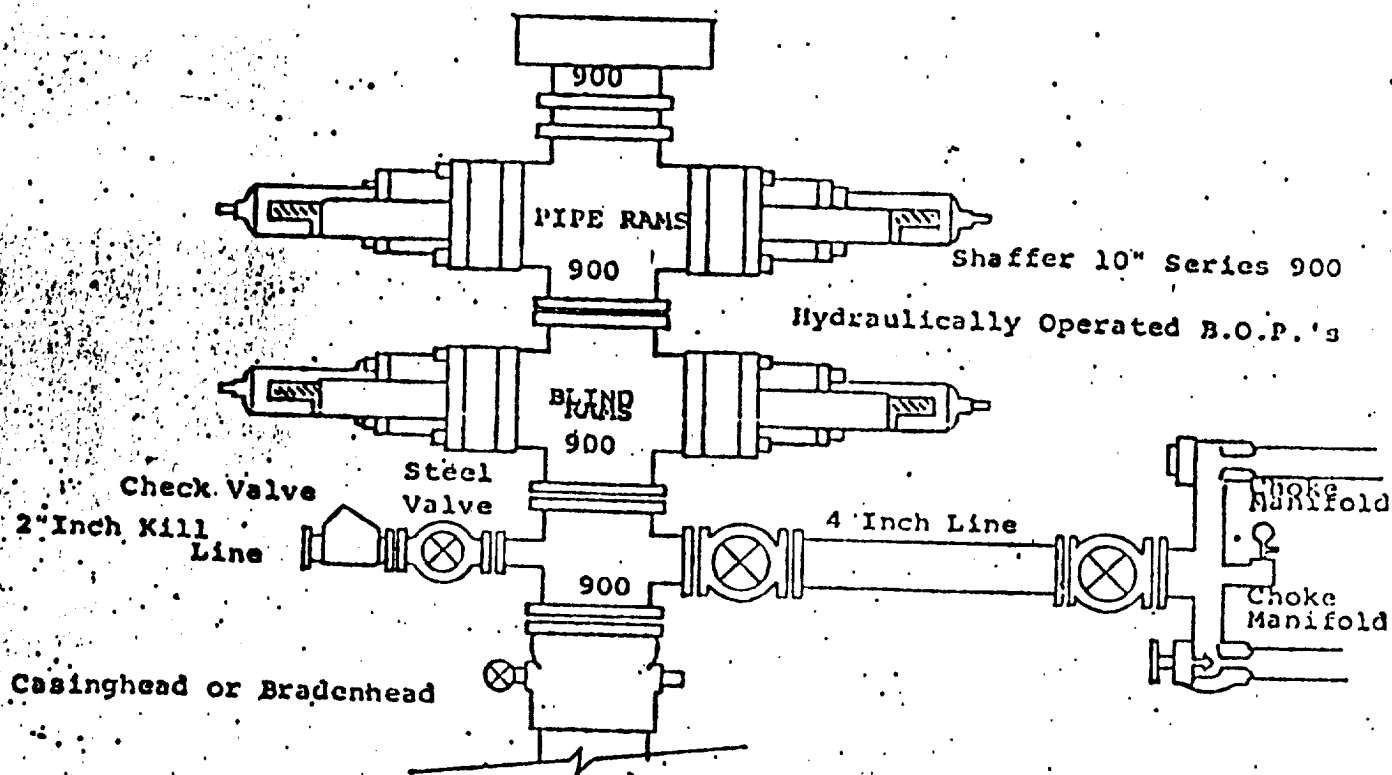
Date Surveyed

7-21-81

Registered Professional Engineer
and/or Land Surveyor

[Signature]
Certificate No. **3640**





THE FOLLOWING CONSTITUTE MINIMUM BLOWOUT PREVENTER REQUIREMENTS

1. All preventers to be hydraulically operated with secondary manual controls installed prior to drilling out from under casing.
2. Choke outlet to be a minimum of 4" diameter.
3. Kill line to be of all steel construction of 2" minimum diameter.
4. All connections from operating manifolds to preventers to be all steel. hole or tube a minimum of one inch in diameter.
5. The available closing pressure shall be at least 15% in excess of that required with sufficient volume to operate the B.O.P.'s.
6. All connections to and from preventer to have a pressure rating equivalent to that of the B.O.P.'s.
7. Inside blowout preventer to be available on rig floor.
8. Operating controls located a safe distance from the rig floor.
9. Hole must be kept filled on trips below intermediate casing. Operator not responsible for blowouts resulting from not keeping hole full.
10. D. P. float must be installed and used below zone of first gas intrusion.