

N.M.O.G.D. COPY

SUBMIT IN TRIPPLICATE

Form approved.  
Budget Bureau No. 42-R1425.

UNITED STATES  
DEPARTMENT OF THE INTERIOR  
GEOLOGICAL SURVEY  
Artesia, NM 88210

NM OIL CONS. COMMISSION

30-005-20834  
NM-046153-A

APPLICATION FOR PERMIT TO DRILL, DEEPEN, OR PLUG BACK

1a. TYPE OF WORK

DRILL ☒

DEEPEN ☐

PLUG BACK ☐

b. TYPE OF WELL

OIL WELL ☒

GAS WELL ☐

OTHER

SINGLE ZONE ☐

RECEIVED  
MULTIPLE ZONE ☐

2. NAME OF OPERATOR

Western Reserves Oil Company

NOV 03 1981

3. ADDRESS OF OPERATOR

P. O. Box 2188 Hobbs, New Mexico 88240 O. C. D.

4. LOCATION OF WELL (Report location clearly and in accordance with any State requirements.)

At surface 1980' FSL & 1980' FWL

At proposed prod. zone Section 34, T-7-S, R-31-E

Same

14. DISTANCE IN MILES AND DIRECTION FROM NEAREST TOWN OR POST OFFICE\*

13.5 miles South of Kenna, New Mexico

16. NO. OF ACRES IN LEASE

320

17. NO. OF ACRES ASSIGNED TO THIS WELL

40

18. DISTANCE FROM PROPOSED LOCATION\* TO NEAREST WELL, DRILLING, COMPLETED, OR APPLIED FOR, ON THIS LEASE, FT.

1900'

19. PROPOSED DEPTH

4150' ±

20. ROTARY OR CABLE TOOLS

Rotary

21. ELEVATIONS (Show whether DF, RT, GR, etc.)

4305.1' GR

22. APPROX. DATE WORK WILL START\*

October 1, 1981

23.

PROPOSED CASING AND CEMENTING PROGRAM

SIZE OF HOLE	SIZE OF CASING	WEIGHT PER FOOT	SETTING DEPTH	QUANTITY OF CEMENT
12 1/4"	8 5/8"	24#	1640' ±	650 sx circulated
7 7/8"	4 1/2"	10.5#	4150' ±	300 sx

Blowout Preventer: 10" API Series 900 Dual Preventer

RECEIVED  
SEP 16 1981

OIL & GAS  
U.S. GEOLOGICAL SURVEY  
ROSWELL, NEW MEXICO

IN ABOVE SPACE DESCRIBE PROPOSED PROGRAM: If proposal is to deepen or plug back, give data on present productive zone and proposed new productive zone. If proposal is to drill or deepen directionally, give pertinent data on subsurface locations and measured and true vertical depths. Give blowout preventer program, if any.

24.

Natural Resources Eng  
Agent

SIGNED *Joe T. Janica*

TITLE

DATE September 15, 1981

(This space for Federal or State office use)

PERMIT NO.

APPROVED  
APPROVAL DATE

APPROVED BY

TITLE

OCT 30 1981

DATE

CONDITIONS OF APPROVAL, IF ANY:

\*See Instructions On Reverse Side

NEW MEXICO OIL CONSERVATION COMMISSION  
WELL LOCATION AND ACREAGE DEDICATION PLAT

Form C-102  
Supersedes C-128  
Effective 1-1-65

All distances must be from the outer boundaries of the Section.

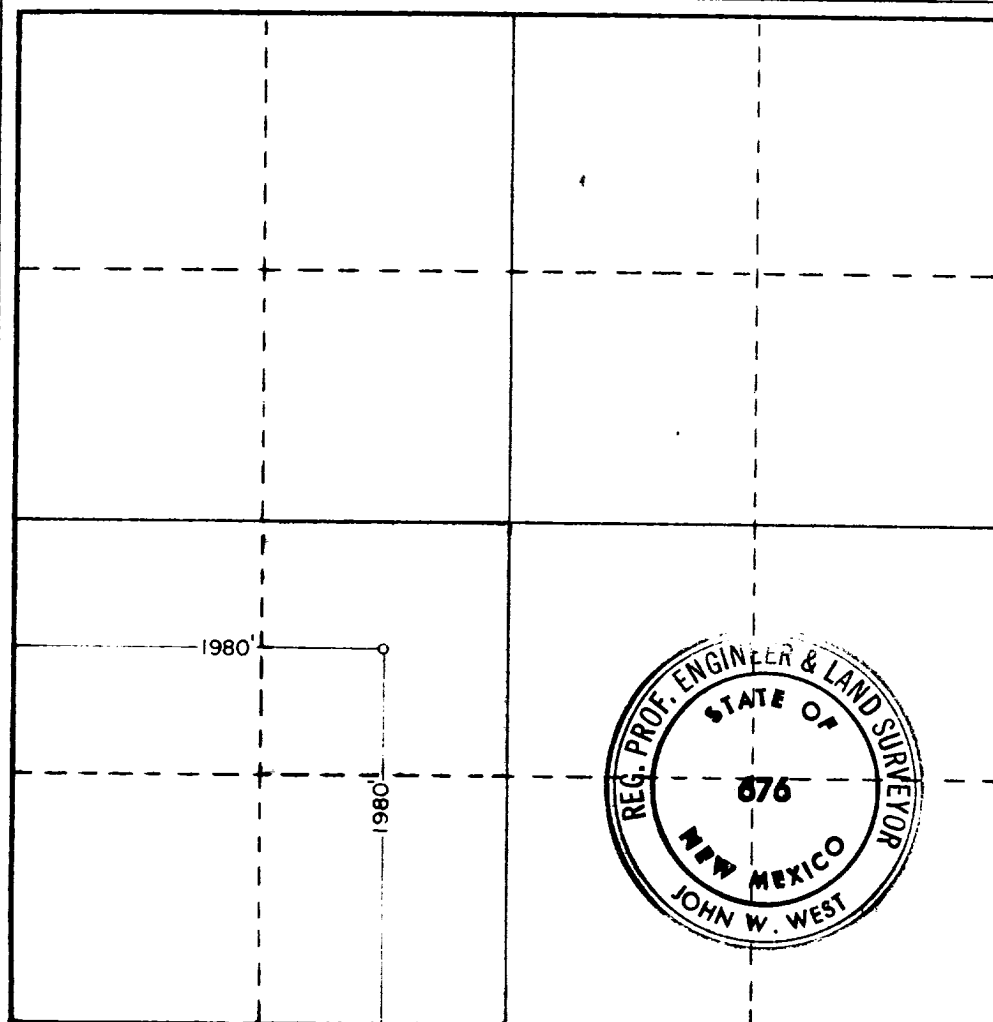
Operator <b>Western Reserve Oil Co.</b>		Lease <b>WESTERN RESERVES 34-31-36</b> <del>Dravo Federal</del>		Well No. <b>6</b>
Unit Letter <b>K</b>	Section <b>34</b>	Township <b>7 South</b>	Range <b>31 East</b>	County <b>Chaves</b>
Actual Footage Location of Well: <b>1980</b> feet from the <b>SOUTH</b> line and <b>1980</b> feet from the <b>WEST</b> line				
Ground Level Elev. <b>4305.1</b>	Producing Formation <b>San Andres</b>	Pool <b>Tom-Tom</b>	Dedicated Acreage: <b>40</b> Acres	

1. Outline the acreage dedicated to the subject well by colored pencil or hatchure marks on the plat below.
2. If more than one lease is dedicated to the well, outline each and identify the ownership thereof (both as to working interest and royalty).
3. If more than one lease of different ownership is dedicated to the well, have the interests of all owners been consolidated by communitization, unitization, force-pooling, etc?

☐ Yes ☐ No If answer is "yes," type of consolidation \_\_\_\_\_

If answer is "no," list the owners and tract descriptions which have actually been consolidated. (Use reverse side of this form if necessary.) \_\_\_\_\_

No allowable will be assigned to the well until all interests have been consolidated (by communitization, unitization, forced-pooling, or otherwise) or until a non-standard unit, eliminating such interests, has been approved by the Commission.



CERTIFICATION

I hereby certify that the information contained herein is true and complete to the best of my knowledge and belief.

*Joe T. Janica*  
Name

Joe T. Janica

Position

Agent, Western Reserves

Company

Natural Resources Eng

Date

September 15, 1981

I hereby certify that the well location shown on this plat was plotted from field notes of actual surveys made by me or under my supervision, and that the same is true and correct to the best of my knowledge and belief.

Date Surveyed

8-11-81

Registered Professional Engineer and/or Land Surveyor

*John W. West*

Certificate No. **JOHN W. WEST 876**  
**PATRICK A. ROMERO 6883**  
**Ronald J. Eidson 3239**

