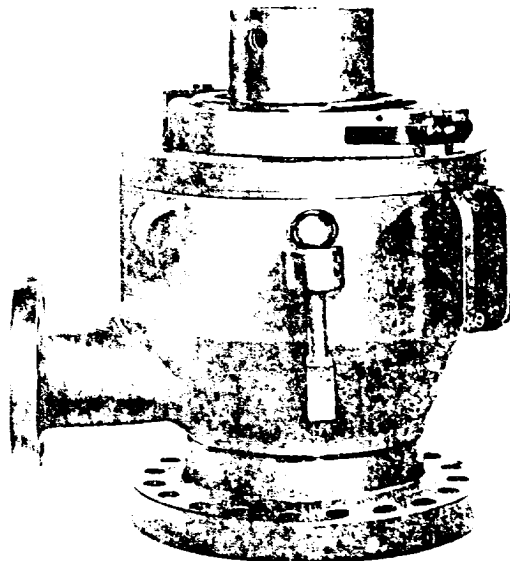


Model 7068

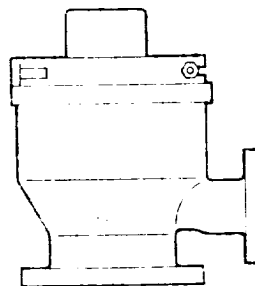
for 10",
12",
and 13⁵/₈"
BOP
stacks.



This model has an integral body with both side outlet and a lower API flange for mounting on the top of BOP stacks.

The 10" size is available in a standard and "Shorty" versions. The "Shorty", 7068-S, is approximately 30% shorter than the standard, an advantage in stacks where there is limited space beneath the table.

All heads have full bores when the drive bushing assembly is removed. The drive bushing assembly will pass a 17¹/₂" table, and is interchangeable with Model 8068.



SPECIFICATIONS

SIZE	LOWER FLANGE	MAXIMUM BORE (A)	SIDE OUTLET	HEIGHT	
				W STD. BUSHING	W/SHORT BUSHING
10"	10"-3000 5000# combination	11 ¹ / ₄ "	6"-2000#	36	29 ⁷ / ₈ "
10" SHORTY	10"-3000 5000# combination	11 ¹ / ₄ "	7" Threaded (Male)	—	24 ³ / ₈ "
12"	12"-3000#	14"	6"-2000#	36	29 ⁷ / ₈ "
13 ⁵ / ₈ "	13 ⁵ / ₈ "-5000#	13 ⁵ / ₈ "	8"-2000#	38	31 ⁷ / ₈ "

KELLY BUSHINGS AVAILABLE: 3¹/₂" Hex or Square, 4¹/₄" Hex or Square, and 5¹/₄" Hex only.
 STRIPPER RUBBERS AVAILABLE: 2⁷/₈", 3¹/₂", 4¹/₂", 5" and 5¹/₂".
 (Stationary casing Stripper Rubbers from 6⁵/₈" thru 10³/₄" on special order).
 Other sizes on special order.

When ordering, specify: (1) Model Number, (2) Lower Flange Size, (3) Kelly Size and (5) High Temperature Model, if desired.

EXHIBIT "E"
 READ & STEVENS, INC.
 West Federal, Well No. 1



RECEIVED

DEC 7 1981

LIBRARY OF CONGRESS