

# N. M. OIL CONS. COMMISSION

Form 9-331 C  
(May 1963)

SUBMIT IN TRIPLICATE\*  
(Other instructions  
reverse side)

Form approved.  
Budget Bureau No. 42-R1425.

N. M. OIL CONS. COMMISSION  
U.S. DEPARTMENT OF THE INTERIOR  
HOBBS, NEW MEXICO 88240  
CERRO GORDO SURVEY

30-005-20845

## APPLICATION FOR PERMIT TO DRILL, DEEPEN, OR PLUG BACK

1a. TYPE OF WORK

DRILL ☒

DEEPEN ☐

PLUG BACK ☐

b. TYPE OF WELL

OIL  
WELL ☒

GAS  
WELL ☐

OTHER

SINGLE  
ZONE ☒

MULTIPLE  
ZONE ☐

2. NAME OF OPERATOR

NRM PETROLEUM CORPORATION

3. ADDRESS OF OPERATOR

900 BUILDING OF THE SOUTHWEST, MIDLAND, TEXAS 79701

4. LOCATION OF WELL (Report location clearly and in accordance with any State requirements.)\*

At surface

1980' FNL AND 1980' FEL OF SECTION 9

At proposed prod. zone

14. DISTANCE IN MILES AND DIRECTION FROM NEAREST TOWN OR POST OFFICE\*

13 MILES WEST OF MILNESAND, NEW MEXICO

15. DISTANCE FROM PROPOSED\*

LOCATION TO NEAREST  
PROPERTY OR LEASE LINE, FT.  
(Also to nearest drlg. unit line, if any)

660'

16. NO. OF ACRES IN LEASE

640

17. NO. OF ACRES ASSIGNED

TO THIS WELL 40

18. DISTANCE FROM PROPOSED LOCATION\*

TO NEAREST WELL, DRILLING, COMPLETED,  
OR APPLIED FOR, ON THIS LEASE, FT.

-

19. PROPOSED DEPTH

4500'

20. ROTARY OR CABLE TOOLS

ROTARY

21. ELEVATIONS (Show whether DF, RT, GR, etc.)

4409 GR

22. APPROX. DATE WORK WILL START\*

UPON APPROVAL

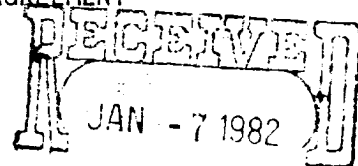
23.

### PROPOSED CASING AND CEMENTING PROGRAM

SIZE OF HOLE	SIZE OF CASING	WEIGHT PER FOOT	SETTING DEPTH	QUANTITY OF CEMENT
12-1/4"	8-5/8"	24# K-55	350'	SUFFICIENT TO CIRCULATE
7-7/8"	4-1/2"	9.5# K-55	4500'	SUFFICIENT TO CIRCULATE

PRODUCING ZONE WILL BE PERFORATED AND STIMULATED AS NECESSARY

SEE ATTACHED FOR: SUPPLEMENTAL DRILLING DATA  
BOP SKETCH  
SURFACE USE AND OPERATIONS PLAN  
SURFACE RESTORATION AGREEMENT



OIL & GAS  
U.S. GEOLOGICAL SURVEY  
ROSWELL, NEW MEXICO

IN ABOVE SPACE DESCRIBE PROPOSED PROGRAM: If proposal is to deepen or plug back, give data on present productive zone and proposed new productive zone. If proposal is to drill or deepen directionally, give pertinent data on subsurface locations and measured and true vertical depths. Give blowout preventer program, if any.

24.

SIGNED

*Arthur R. Brown*  
Arthur R. Brown

Agent for

NRM PETROLEUM CORPORATION

DATE JANUARY 6, 1982

(This space for Federal or State office use)

PERMIT NO.

GEORGE H. STEWART

APPROVAL DATE

JAN 18 1982

APPROVAL SUBJECT TO

GENERAL REQUIREMENTS AND

SPECIAL STIPULATIONS

ATTACHED

APPROVED BY

CONDITIONS OF APPROVAL FOR

JAMES A. GILLHAM  
DISTRICT SUPERVISOR

\*See Instructions On Reverse Side

/ MEXICO OIL CONSERVATION COMMISSION  
WELL LOCATION AND ACREAGE DEDICATION PLAT

Form C-102  
Supersedes C-128  
Effective 1-1-65

All distances must be from the outer boundaries of the Section.

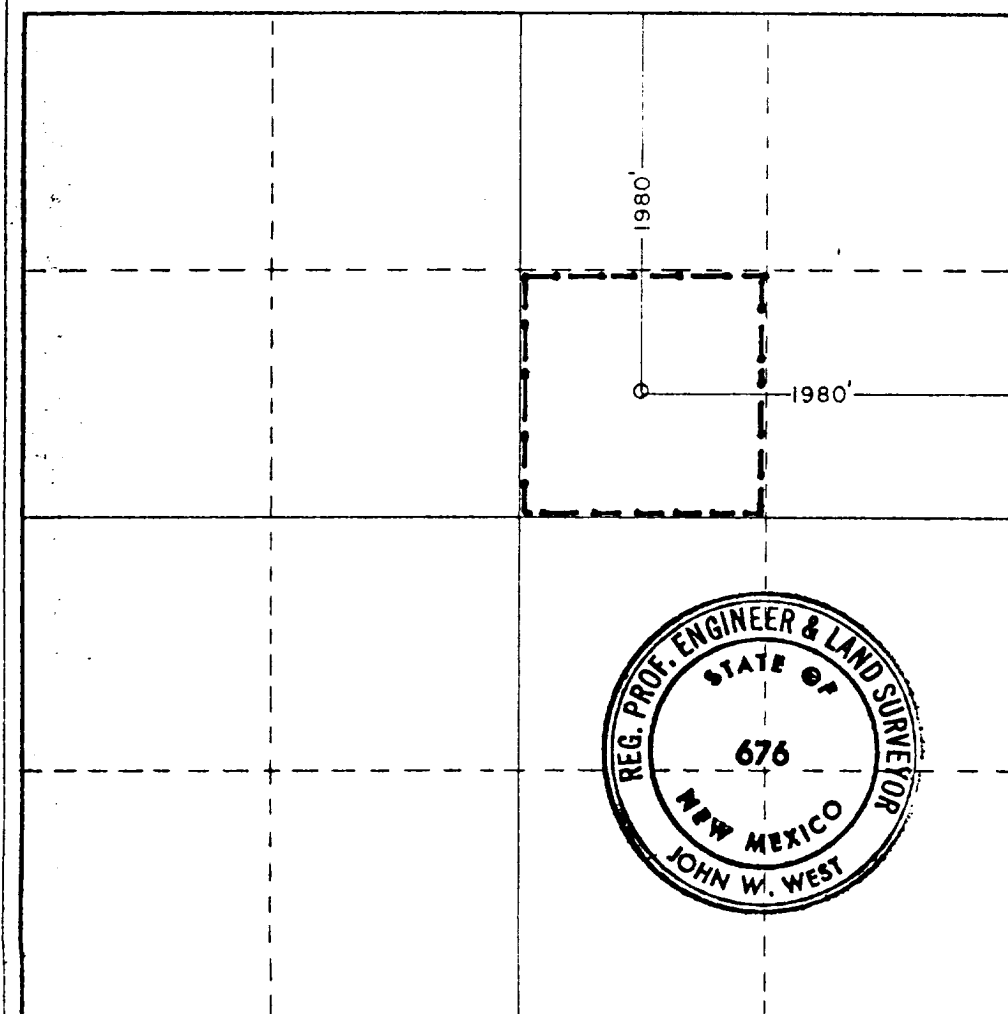
Operator <b>NRM Petroleum Corp.</b>			Lease <b>Davis Federal</b>		Well No. <b>1</b>
Unit Letter <b>G</b>	Section <b>9</b>	Township <b>8 South</b>	Range <b>33 East</b>	County <b>Chaves</b>	
Actual Footage Location of Well: <b>1980</b> feet from the <b>North</b> line and <b>1980</b> feet from the <b>East</b> line					
Ground Level Elev. <b>4409.0'</b>	Producing Formation <b>SAN ANDRES</b>		Pool <b>CHAVEROO-SAN ANDRES</b>		Dedicated Acreage: <b>40</b> Acres

1. Outline the acreage dedicated to the subject well by colored pencil or hachure marks on the plat below.
2. If more than one lease is dedicated to the well, outline each and identify the ownership thereof (both as to working interest and royalty).
3. If more than one lease of different ownership is dedicated to the well, have the interests of all owners been consolidated by communitization, unitization, force-pooling, etc?

☐ Yes ☐ No If answer is "yes," type of consolidation \_\_\_\_\_

If answer is "no," list the owners and tract descriptions which have actually been consolidated. (Use reverse side of this form if necessary.) \_\_\_\_\_

No allowable will be assigned to the well until all interests have been consolidated (by communitization, unitization, forced-pooling, or otherwise) or until a non-standard unit, eliminating such interests, has been approved by the Commission.



CERTIFICATION

I hereby certify that the information contained herein is true and complete to the best of my knowledge and belief.

*Arthur R. Brown*  
Name  
**Arthur R. Brown**

Position

**Agent for**

Company

**NRM PETROLEUM CORPORATION**

Date

**JANUARY 6, 1982**

I hereby certify that the well location shown on this plat was plotted from field notes of actual surveys made by me or under my supervision, and that the same is true and correct to the best of my knowledge and belief.

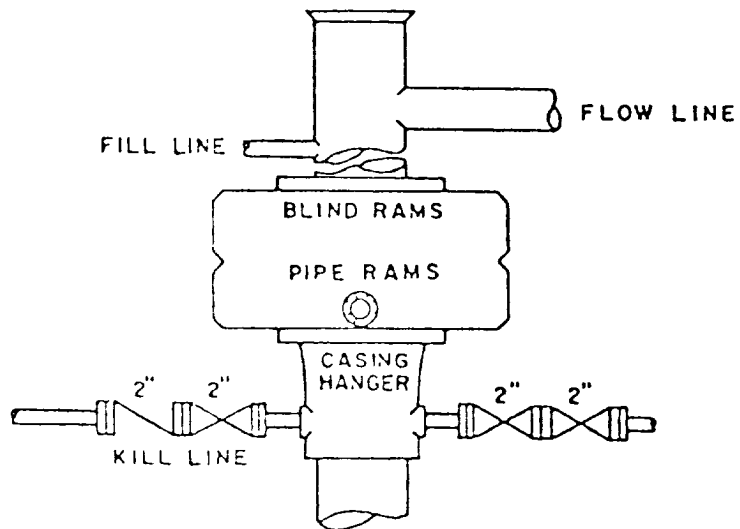
Date Surveyed

**Dec. 10, 1981**

Registered Professional Engineer  
and/or Land Surveyor

*John W. West*

Certificate No. **JOHN W. WEST 876**  
**PATRICK A. ROMERO 6663**  
**Ronald J. Eidson 3239**



BOP STACK

3000 PSI WORKING PRESSURE

DEPTH INTERVAL

FROM 8-5/8" CASING SEAT TO TOTAL DEPTH

BOP ARRANGEMENT