

UNITED STATES
DEPARTMENT OF THE INTERIOR
GEOLOGICAL SURVEY

30-005-20895

APPLICATION FOR PERMIT TO DRILL, DEEPEN, OR PLUG BACK

1a. TYPE OF WORK

DRILL ☒

DEEPEN ☐

PLUG BACK ☐

b. TYPE OF WELL

OIL WELL ☒

GAS WELL ☐

OTHER

SINGLE ZONE ☒

MULTIPLE ZONE ☐

2. NAME OF OPERATOR

(Ph. 915-682-2273)

MINERAL DEVELOPMENT INC.

3. ADDRESS OF OPERATOR

965 Two Midland National Center, Midland, Texas 79701

4. LOCATION OF WELL (Report location clearly and in accordance with any State requirements.)*
At surface

660' FSL & 1980' FEL of Sec. 15-8S-31E

At proposed prod. zone
same

14. DISTANCE IN MILES AND DIRECTION FROM NEAREST TOWN OR POST OFFICE*

16 1/2 air miles south of Kenna, New Mexico

15. DISTANCE FROM PROPOSED*

LOCATION TO NEAREST
PROPERTY OR LEASE LINE, FT.
(Also to nearest drlg. unit line, if any)

660'

16. NO. OF ACRES IN LEASE

2120.16

17. NO. OF ACRES ASSIGNED
TO THIS WELL

40

18. DISTANCE FROM PROPOSED LOCATION*
TO NEAREST WELL, DRILLING COMPLETED,
OR APPLIED FOR, ON THIS LEASE, FT.

4100'

19. PROPOSED DEPTH

4200' San Andres

20. ROTARY OR CABLE TOOLS

Rotary

21. ELEVATIONS (Show whether DF, RT, GR, etc.)

4274' G.L.

22. APPROX. DATE WORK WILL START*

December 5, 1982

23. PROPOSED CASING AND CEMENTING PROGRAM

SIZE OF HOLE	SIZE OF CASING	WEIGHT PER FOOT	SETTING DEPTH	QUANTITY OF CEMENT
11"	8 5/8"	24.0#	400'	Sufficient to circulate
7 7/8"	4 1/2"	9.5#	4200'	150 sacks

Pay zone will be selectively perforated and stimulated as needed for optimum production.

Attached are: 1. Well Location & Acreage Dedication Plat
2. Supplemental Drilling Data
3. Surface Use Plan

RECEIVED

DEC 7 1982

O. C. D.
ARTESIA, OFFICE

RECEIVED

NOV 19 1982

OIL & GAS
MINERAL INVEST. SERVICE
ROSWell, NEW MEXICO

IN ABOVE SPACE DESCRIBE PROPOSED PROGRAM: If proposal is to deepen or plug back, give data on present productive zone and proposed new productive zone. If proposal is to drill or deepen directionally, give pertinent data on subsurface locations and measured and true vertical depths. Give blowout preventer program, if any.

24.

SIGNED

James A. Kraut
James A. Kraut

TITLE Agent

DATE November 17, 1982

(This space for Federal or State office use)

PERMIT NO.

APPROVAL DATE

(Orig. Sgd.) GEORGE H. STEWART

APPROVED BY

DEC 3 1982

TITLE

DATE

CONDITIONS OF APPROVAL, IF ANY:

JAMES A. GILHAM
DISTRICT SUPERVISOR

RECEIVED

DEC 13 1982

O.C.D.
HOBBS OFFICE

NEW MEXICO OIL CONSERVATION COMMISSION
WELL LOCATION AND ACREAGE DEDICATION PLAT

Form C-102
Supersedes C-120
Effective 1-1-85

All distances must be from the outer boundaries of the Section

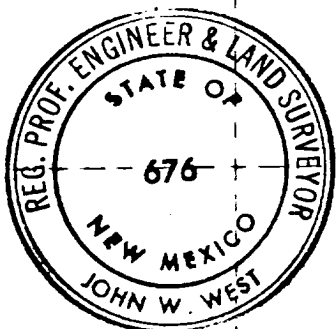
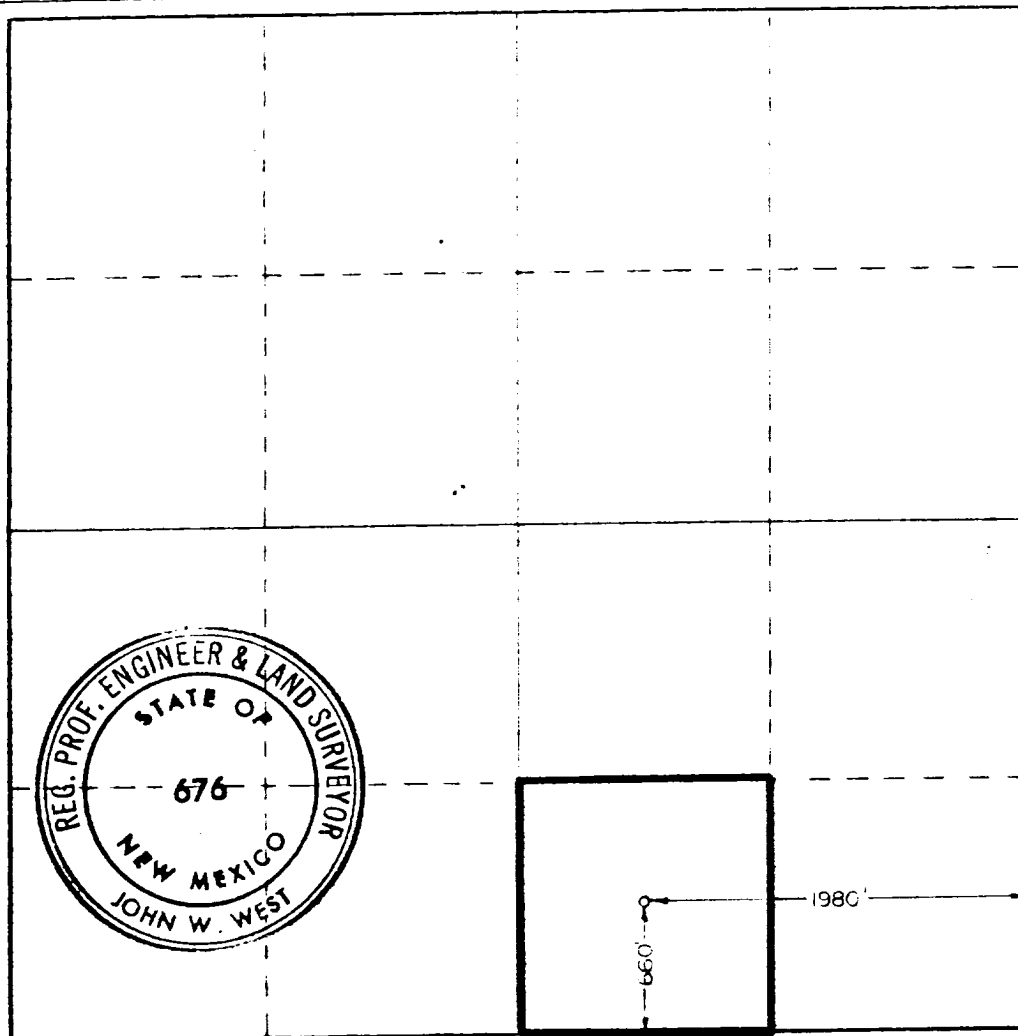
Operator MINERAL DEVELOPMENT INC.		Lessee PHILLIPS FEDERAL		Well No. 2
Unit Letter 0	Section 15	Township 8 SOUTH	Range 31 EAST	County CHAMES
Actual Protrude Location of Well: 660 feet from the SOUTH line and 1980 feet from the EAST line				
Ground Level Elev. 4274.0	Producing Formation San Andres	Zone East Siete (Ext.)	Designated Acreage 40 Acres	

- Outline the acreage dedicated to the subject well by colored pencil or hachure marks on the plat below.
- If more than one lease is dedicated to the well, outline each and identify the ownership thereof (both as to working interest and royalty).
- If more than one lease of different ownership is dedicated to the well, have the interests of all owners been consolidated by communitization, unitization, force-pooling, etc?

☐ Yes ☐ No If answer is "yes" type of consolidation _____

If answer is "no" list the owners and tract descriptions which have actually been consolidated. (Use reverse side of this form if necessary.) _____

No allowable will be assigned to the well until all interests have been consolidated by communitization, forced-pooling, or otherwise) or until a non-standard unit, eliminating such interests, has been approved by the Commission.



CERTIFICATION

I hereby certify that the information contained herein is true and complete to the best of my knowledge and belief.

James A. Knauf
James A. Knauf

Position
Agent

Company
MINERAL DEVELOPMENT INC.

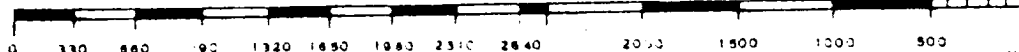
Date
November 17, 1982

I hereby certify that the well location shown on this plat was plotted from field notes of actual surveys made by me or under my supervision, and that the same is true and correct to the best of my knowledge and belief.

Date Surveyed
11/10/82

Registered Professional Engineer and/or Land Surveyor

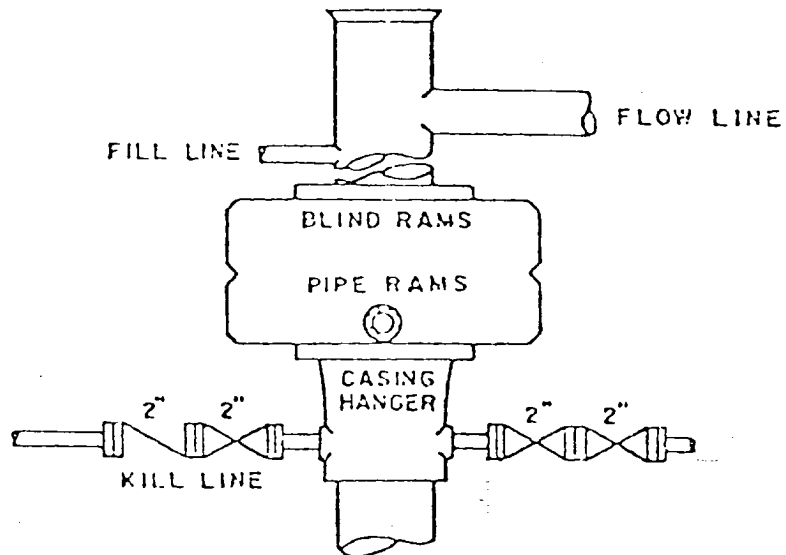
John W. West
Certificate No
JOHN W. WEST NO. 676



RECEIVED
DEC 13 1982
O.C.D.
HOBBS OFFICE

BLOWOUT PREVENTER SKETCH

Mineral Development, Inc.
Well #2 Phillips Federal
SW $\frac{1}{4}$ SE $\frac{1}{4}$ Sec. 15-8S-31E



RECEIVED
DEC 13 1982
O.C.D.
HOBBS OFFICE