

UNITED STATES
DEPARTMENT OF THE INTERIOR
GEOLOGICAL SURVEYNM OIL CONS. COMMISSION
Lower DD
Artesia, NM 88210

30-005-20904

APPLICATION FOR PERMIT TO DRILL, DEEPEN, OR PLUG BACK

1a. TYPE OF WORK

DRILL ☒DEEPEN ☐PLUG BACK ☐

b. TYPE OF WELL

OIL
WELL ☒GAS
WELL ☐

OTHER

SINGLE
ZONE ☐MULTIPLE
ZONE ☐

2. NAME OF OPERATOR

Petroleum Exploration Company, Inc.

JUL 29 1983

3. ADDRESS OF OPERATOR

P.O. Box 809, Roswell, New Mexico 88201

O. C. D.

4. LOCATION OF WELL (Report location clearly and in accordance with any State requirements)
At surface

1980' FNL & 610' FEL

At proposed prod. zone

Same

14. DISTANCE IN MILES AND DIRECTION FROM NEAREST TOWN OR POST OFFICE*

15 3/4 Miles South of Kenna, New Mexico

15. DISTANCE FROM PROPOSED*

LOCATION TO NEAREST
PROPERTY OR LEASE LINE, FT.
(Also to nearest drlg. unit line, if any)

610'

16. NO. OF ACRES IN LEASE

540

17. NO. OF ACRES ASSIGNED
TO THIS WELL

40

18. DISTANCE FROM PROPOSED LOCATION*
TO NEAREST WELL, DRILLING, COMPLETED,
OR APPLIED FOR, ON THIS LEASE, FT.

1320'

19. PROPOSED DEPTH

3850'

20. ROTARY OR CABLE TOOLS

Rotary

21. ELEVATIONS (Show whether DF, RT, GR, etc.)

4210.4 GR

22. APPROX. DATE WORK WILL START*

July 19, 1983

23.

PROPOSED CASING AND CEMENTING PROGRAM

SIZE OF HOLE	SIZE OF CASING	WEIGHT PER FOOT	SETTING DEPTH	QUANTITY OF CEMENT
12 1/4"	8 5/8"	20#	370'	230 sxs. Class "C" Circulate
7 7/8"	4 1/2"	9.5# J55	3850'	350 sxs. Poz "C"

Selectively perforate and treat pay zone.

Attachments:

Survey Plat (c-102)
Supplemental Drilling Data

IN ABOVE SPACE DESCRIBE PROPOSED PROGRAM: If proposal is to deepen or plug back, give data on present productive zone and proposed new productive zone. If proposal is to drill or deepen directionally, give pertinent data on subsurface locations and measured and true vertical depths. Give blowout preventer program, if any.

24.

SIGNED

Vice-President

DATE July 19, 1983

(This space for Federal or State office use)

PERMIT NO.

APPROVAL DATE

APPROVED BY

TITLE

DATE

CONDITIONS OF APPROVAL, IF ANY

RECEIVED

AUG 1 1983

REC.
HOBBS OFFICE

WELL LOCATION AND ACREAGE DEDICATION

All distances must be from the outer boundaries of the Section.

Operator Petroleum Exploration Company, Inc.		Lease Siete-Federal		Well No. 2
Oil Letter H	Section 17	Township 8 South	Range 31 East	County Chaves
Actual Postage Location of Well: 1980 feet from the North line and 610 feet from the East line Sound Level Elev. 4210.4 Producing Formation San Andres Pool Siete Dedicated Acreage: 40 Acres				

1. Outline the acreage dedicated to the subject well by colored pencil or hatchure marks on the plat below.

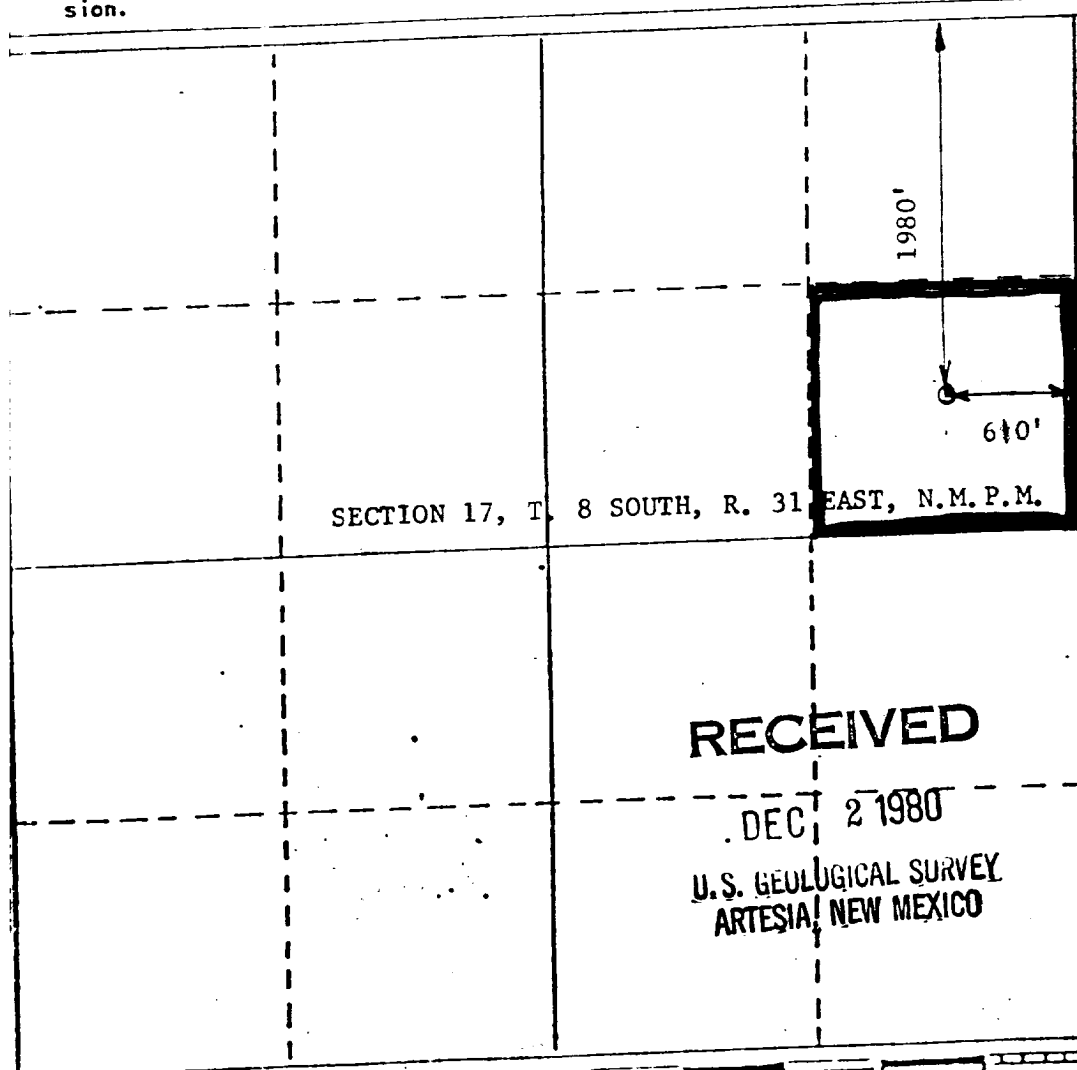
2. If more than one lease is dedicated to the well, outline each and identify the ownership thereof (both as to working interest and royalty).

3. If more than one lease of different ownership is dedicated to the well, have the interests of all owners been consolidated by communitization, unitization, force-pooling, etc?

☐ Yes ☐ No If answer is "yes," type of consolidation _____

If answer is "no," list the owners and tract descriptions which have actually been consolidated. (Use reverse side of this form if necessary.) _____

No allowable will be assigned to the well until all interests have been consolidated (by communitization, unitization, force-pooling, or otherwise) or until a non-standard unit, eliminating such interests, has been approved by the Commission.



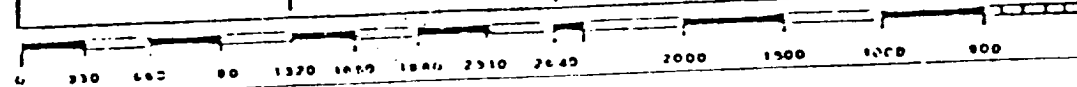
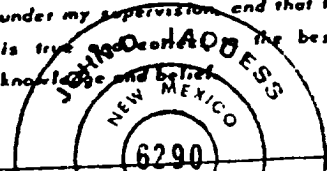
CERTIFICATION

I hereby certify that the information contained herein is true and complete to the best of my knowledge and belief.

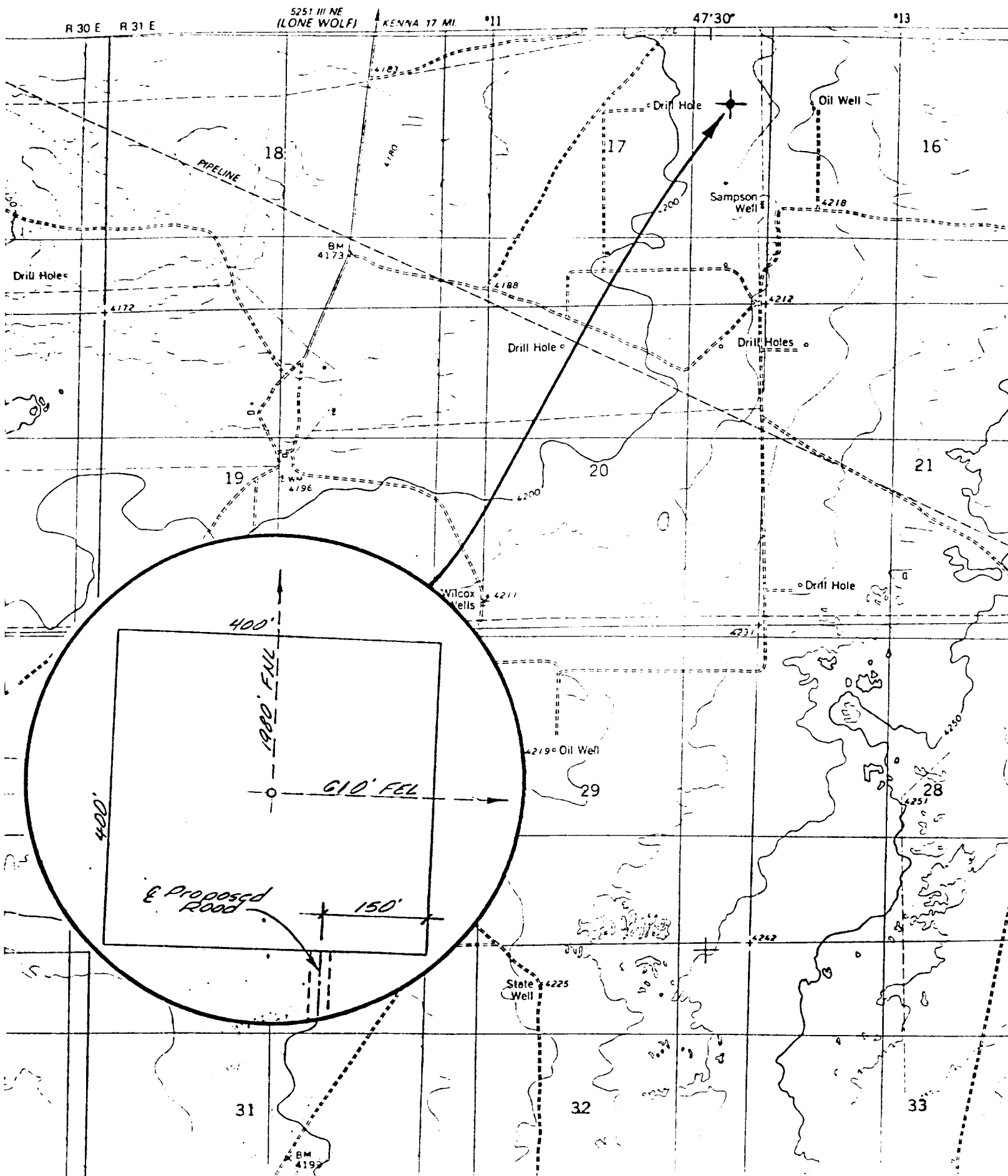
Name
Gerald E. Harrington
 Position
President
 Company
Petroleum Exploration Co., Inc.
 Date
December 1, 1980

I hereby certify that the well location shown on this plat was plotted from field notes of actual surveys made by me or under my supervision and that the same is true to the best of my knowledge and belief.

Date Surveyed
September 1, 1980
 Registered Professional Engineer and/or Land Professional
John D. Jaquess
 Certificate No.
6290



RECEIVED
AUG 1 1983
O.C.D.
HOBBS OFFICE



RECEIVED
AUG 1 1983
O.C.D.
HOBBS OFFICE

SUPPLEMENTAL DRILLING DATA

PETROLEUM EXPLORATION COMPANY, INC.

#2-Y Siete-Federal

1980' FNL and 610' FEL

Section 17, T-8-S, R-31-E

Chaves County, New Mexico

In conjunction with Form 9-331C, Application for Permit to Drill the subject well, Petroleum Exploration Company, Inc. submits the following ten items of pertinent information in accordance with U.S.G.S. requirements.

1. The geologic surface formation is Quaternary.
2. The estimated tops of geologic markers are as follows:

Rustler	1300'
Salado	1330'
Yates	1850'
San Andres	3015'
Pi Marker	3540'
P-1 Zone	3695'
P-2 Zone	3770'

3. The estimated depths at which anticipated water, oil, or gas are expected to be encountered:

Water: Approximately 195 feet
Oil or gas: San Andres approximately 3695' - 3850'

4. Proposed Casing Program: See Form 9-331-C

Size	Interval	Weight	Grade	Joint	New or Used
8 5/8"	0' - 370'	#20	X-42	ST & C	New
4 1/2"	0' - 3850'	9.5#	J-55	ST&C	New

5. Pressure Control Equipment: The blowout preventer will be an annular type preventer. A sketch is attached.
6. Mud program: A copy of the mud program to be used is attached.
7. Auxiliary equipment: Master valve on blowout preventer.
8. Testing, Logging, and Coring Programs:
 - No drillstem tests or cores are planned.
 - Logging:
 - Compensated Neutron-Formation Density Log with Gamma Ray and Caliper
 - Laterolog - Microlaterolog
9. No abnormal pressures or temperatures are anticipated.
10. Anticipated Starting Date: Rig will be available on Tuesday, July 19, 1983.

RECEIVED
AUG 1 1983
O.C.D.
HOBBS OFFICE

