

OIL CONSERVATION DIVISION

P. O. BOX 2084

Form C-102
Revised 10-1-78STATE OF NEW MEXICO
ENERGY AND MINERALS DEPARTMENT

SANTA FE, NEW MEXICO 87501

All distances must be from the outer boundaries of the Section.

Operator McClellan Oil Corp.			Lease McClellan Federal		Well No. #2
Well Letter H	Section 27	Township 15 South	Range 30 East	County Chaves	
Actual Postage Location of Well: 1980 feet from the North line and 660 feet from the East line					
Ground Level Elev. 4078	Producing Formation Strawn	Pool UNDESIGNATED		Dedicated Acreage: 80 40 Acres	

1. Outline the acreage dedicated to the subject well by colored pencil or hatchure marks on the plat below.

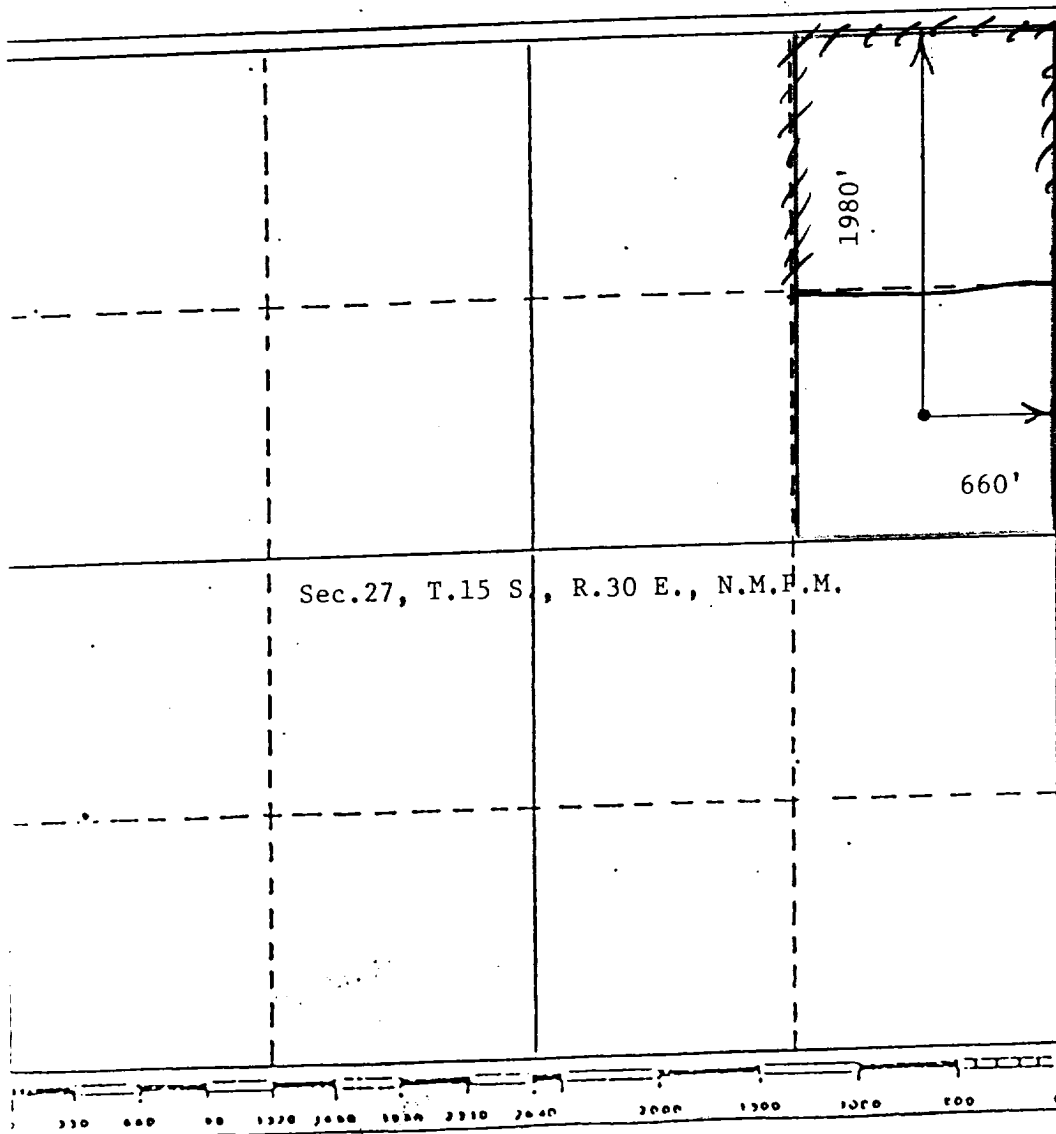
2. If more than one lease is dedicated to the well, outline each and identify the ownership thereof (both as to working interest and royalty).

3. If more than one lease of different ownership is dedicated to the well, have the interests of all owners been consolidated by communitization, unitization, force-pooling, etc?

☐ Yes ☐ No If answer is "yes," type of consolidation _____

If answer is "no," list the owners and tract descriptions which have actually been consolidated. (Use reverse side of this form if necessary.) _____

No allowable will be assigned to the well until all interests have been consolidated (by communitization, unitization, force-pooling, or otherwise) or until a non-standard unit, eliminating such interests, has been approved by the Division.



CERTIFICATION

I hereby certify that the information contained herein is true and complete to the best of my knowledge and belief.

Mark McClellan

Name

Mark McClellan

Position

Geologist

Company

McClellan Oil Corp.

Date

7/8/83

I hereby certify that the well location shown on this plat was plotted from field notes of actual surveys made by me or under my supervision, and that the same is true and correct to the best of my knowledge and belief.

Date Surveyed

October 18, 1983

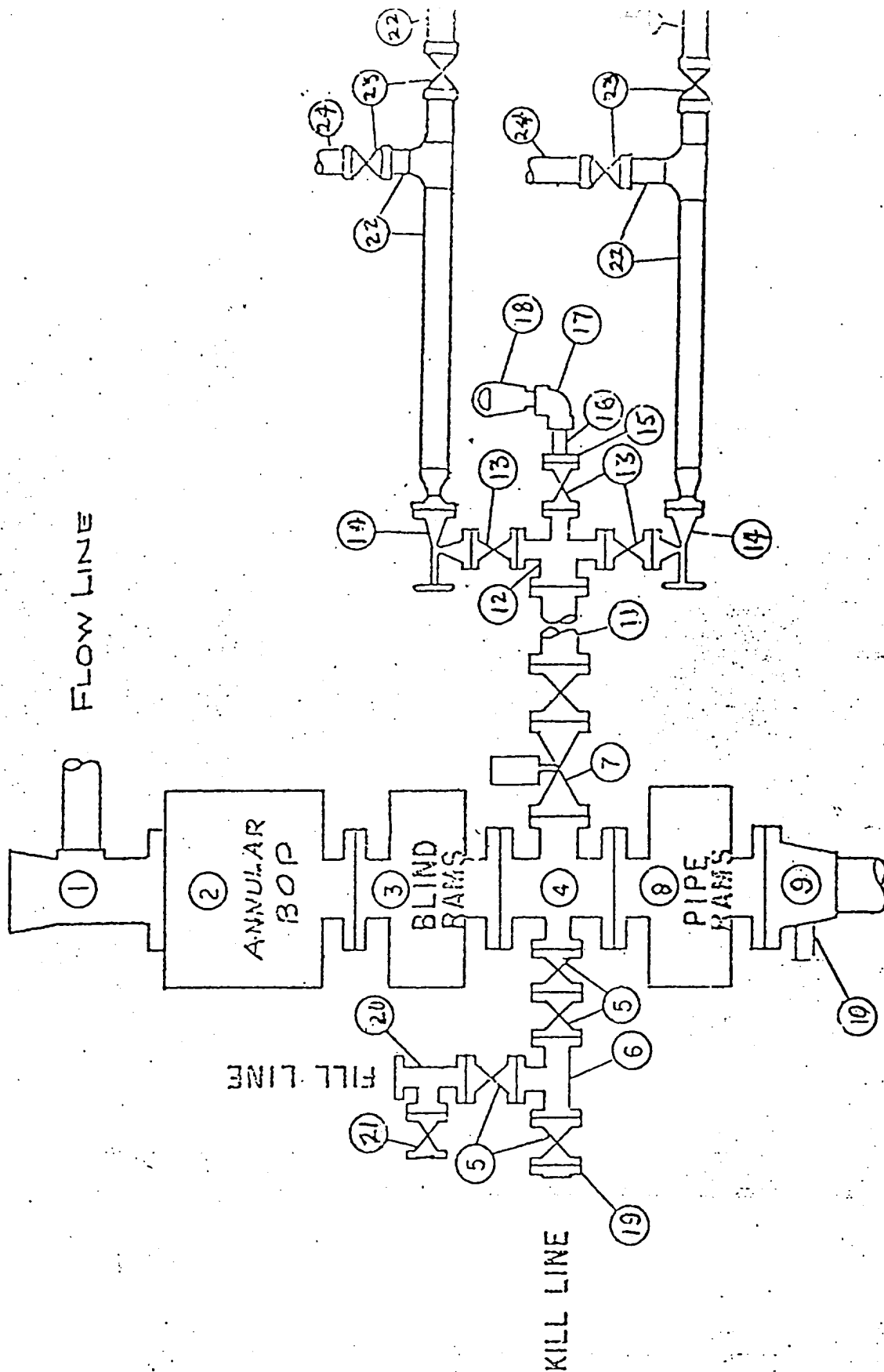
Registered Professional Engineer
and/or Land Surveyor

6290

John S. Jagers, P.E. & L.S.

Certificate No. 6290 PROFESSIONAL ENGINEER

BLOWOUT PREVENTER SPECIFICATION



RECEIVED

AUG 1 1983

C.C.D.
HOBBS OFFICE