

All distances must be from the outer boundaries of the Section.

Operator Petroleum Exploration Company, Inc.		Lease Siete Federal		Well No. #3
Unit Letter G	Section 17	Township 8 South	Range 31 East	County Chaves
Actual Well Location of Well: 1650 feet from the East line and 1980 feet from the North line				
Ground Level Elev. 4198	Producing Formation San Andres	Pool Siete	Dedicated Acres 40 Acres	

1. Outline the acreage dedicated to the subject well by colored pencil or hatchure marks on the plat below.

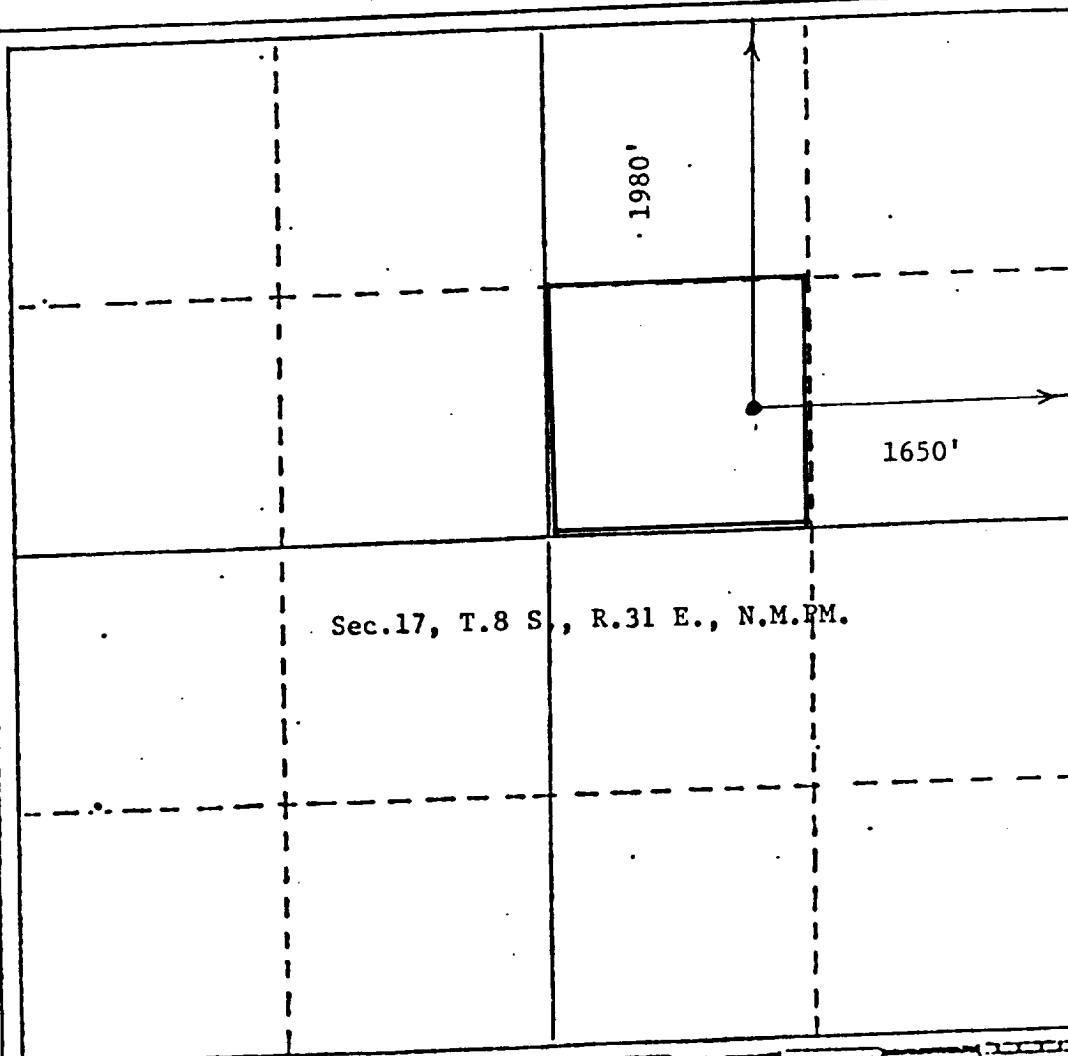
2. If more than one lease is dedicated to the well, outline each and identify the ownership thereof (both as to working interest and royalty).

3. If more than one lease of different ownership is dedicated to the well, have the interests of all owners been consolidated by communitization, unitization, force-pooling, etc?

☐ Yes ☐ No If answer is "yes," type of consolidation _____

If answer is "no," list the owners and tract descriptions which have actually been consolidated. (Use reverse side of this form if necessary.) _____

No allowable will be assigned to the well until all interests have been consolidated (by communitization, unitization, forced-pooling, or otherwise) or until a non-standard unit, eliminating such interests, has been approved by the Division.



CERTIFICATION

I hereby certify that the information contained herein is true and complete to the best of my knowledge and belief.

Name
Billy G. Underwood, Jr.

Position
Vice-President

Company
Petroleum Exploration Co., Inc.

Date
August 10, 1983

I hereby certify that the well location shown on this plat was plotted from field notes of actual surveys made by me or under my supervision, and that the same is true and correct to the best of my knowledge and belief.

JOHN D. JAQUES
Date Surveyed
August 10, 1983
Registered Professional Engineer
and Surveyor
JOHN D. JAQUES, P.E. & L.S.
8295

RECEIVED

AUG 29 1983

RECEIVED
FEDERAL BUREAU OF INVESTIGATION
U.S. DEPARTMENT OF JUSTICE