

**MEXICO OIL CONSERVATION COMMISSION
WELL LOCATION AND ACREAGE DEDICATION PLAT**

Form C-102
Supersedes C-128
Effective 1-1-65

All distances must be from the outer boundaries of the Section.

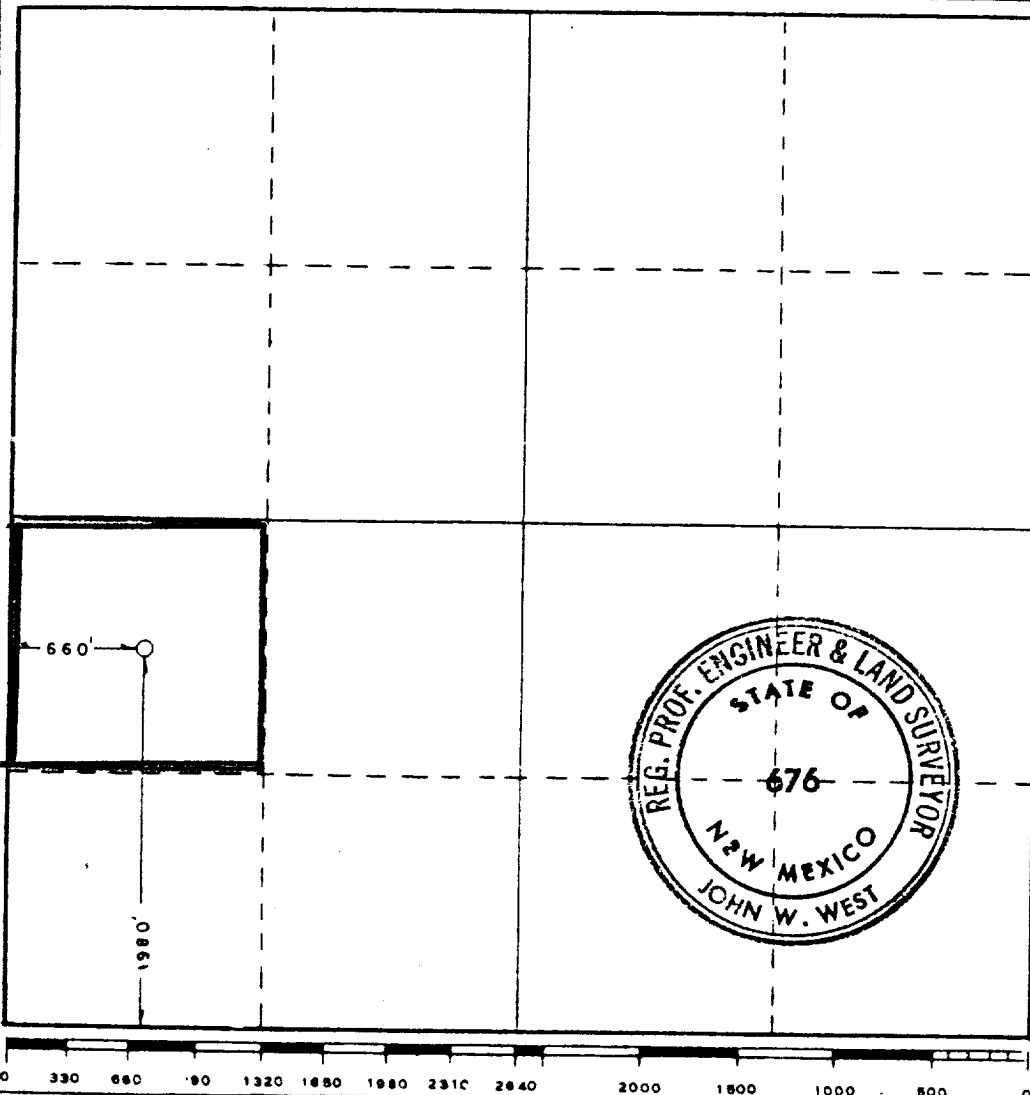
| | | | | | |
|---|--|------------------------|-----------------------------|---------------------------------------|----------------------|
| Operator ENSERCH EXPLORATION, INC. | | | Lease STATE 13 | | Well No. 1 |
| Unit Letter L | Section 13 | Township 12S | Range 31E | County CHAVES | |
| Actual Footage Location of Well: 1980 feet from the SOUTH line and 660 feet from the WEST line | | | | | |
| Ground Level Elev. 4420.9 | Producing Formation Devonian | | Pool Undesignated | Dedicated Acreage: 40 Acres | |

1. Outline the acreage dedicated to the subject well by colored pencil or hatchure marks on the plat below.
2. If more than one lease is dedicated to the well, outline each and identify the ownership thereof (both as to working interest and royalty).
3. If more than one lease of different ownership is dedicated to the well, have the interests of all owners been consolidated by communitization, unitization, force-pooling, etc?

☐ Yes ☐ No If answer is "yes," type of consolidation _____

If answer is "no," list the owners and tract descriptions which have actually been consolidated. (Use reverse side of this form if necessary.) _____

No allowable will be assigned to the well until all interests have been consolidated (by communitization, unitization, forced-pooling, or otherwise) or until a non-standard unit, eliminating such interests, has been approved by the Commission.



CERTIFICATION

I hereby certify that the information contained herein is true and complete to the best of my knowledge and belief.

C. H. Peeples

Name
C. H. Peeples
Position
Regional Drilling Manager
Company
Enserch Exploration, Inc.
Date
October 21, 1983

I hereby certify that the well location shown on this plat was plotted from field notes of actual surveys made by me or under my supervision, and that the same is true and correct to the best of my knowledge and belief.

Date Surveyed
10/18/83
Registered Professional Engineer and/or Land Surveyor
John W. West
Certificate No. **JOHN W. WEST, 676**
RONALD J. EIDSON, 3239

RECEIVED
OCT 24 1983
O.C.D.
HOBBS OFFICE
48/26/14
177