

UNITED STATES
DEPARTMENT OF THE INTERIOR
GEOLOGICAL SURVEY

APPLICATION FOR PERMIT TO DRILL, DEEPEN, OR PLUG BACK

1a. TYPE OF WORK

DRILL ☒DEEPEN ☐PLUG BACK ☐

b. TYPE OF WELL

OIL
WELL ☒GAS
WELL ☐OTHER ☐SINGLE
ZONE ☐MULTIPLE
ZONE ☐

2. NAME OF OPERATOR

LeMay Energy Corporation

3. ADDRESS OF OPERATOR

204 North Guadalupe, Suite C - Santa Fe, New Mexico 87501

4. LOCATION OF WELL (Report location clearly and in accordance with any State requirements.)*

At surface

1980 FNL & 330 FWL of Section 6, T-8-S, R-32-E

At proposed prod. zone

Same

14. DISTANCE IN MILES AND DIRECTION FROM NEAREST TOWN OR POST OFFICE*

18 Miles North of Caprock, New Mexico

15. DISTANCE FROM PROPOSED*

LOCATION TO NEAREST

PROPERTY OR LEASE LINE, FT.

(Also to nearest drlg. unit line, if any)

330'

16. NO. OF ACRES IN LEASE

990.35

18. DISTANCE FROM PROPOSED LOCATION*

TO NEAREST WELL, DRILLING COMPLETED,
OR APPLIED FOR, ON THIS LEASE, FT.

N/A

19. PROPOSED DEPTH

4230'

17. NO. OF ACRES ASSIGNED

TO THIS WELL

40

20. ROTARY OR CABLE TOOLS

Rotary

21. ELEVATIONS (Show whether DF, RT, GR, etc.)

4433.3 Ground Level

22. APPROX. DATE WORK WILL START*

December 1, 1983

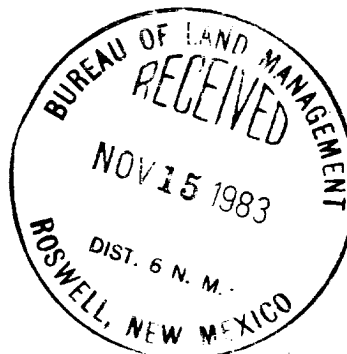
23. PROPOSED CASING AND CEMENTING PROGRAM

SIZE OF HOLE	SIZE OF CASING	WEIGHT PER FOOT	SETTING DEPTH	QUANTITY OF CEMENT
11'-12 1/4"	8 5/8"	24.0#	1725'	Enough to circulate to surface
7 7/8"	4 1/2"	9.5#	4230'	300 sx or 500' above pay

Well will be drilled to a total depth of approximately 4230' and all potential oil and gas zones will be evaluated. If commercial production is indicated well will be selectively perforated and stimulated.

Attached are: 1. Well location and Dedication Plat
2. Supplemental Drilling data
3. Surface Use Plan

Gas is not dedicated to a pipeline



IN ABOVE SPACE DESCRIBE PROPOSED PROGRAM: If proposal is to deepen or plug back, give data on present productive zone and proposed new productive zone. If proposal is to drill or deepen directionally, give pertinent data on subsurface locations and measured and true vertical depths. Give blowout preventer program, if any.

24.

SIGNED

TITLE

President

DATE

11/14/83

(This space for Federal or State office use)

PERMIT NO.

APPROVAL DATE

APPROVED BY

'Orig. Sgd.' Earl R. Cunningham

APPROVAL SUBJECT TO District Manager

CONDITIONS OF APPROVAL, IF ANY:

GENERAL REQUIREMENTS AND
SPECIAL STIPULATIONS

ATTACHED

DATE

NOV 28 1983

NEW MEXICO OIL CONSERVATION COMMISSION
WELL LOCATION AND ACREAGE DEDICATION PLAT

Form O-101
Supersedes O-128
Effective 1-1-65

All distances must be from the outer boundaries of the Section

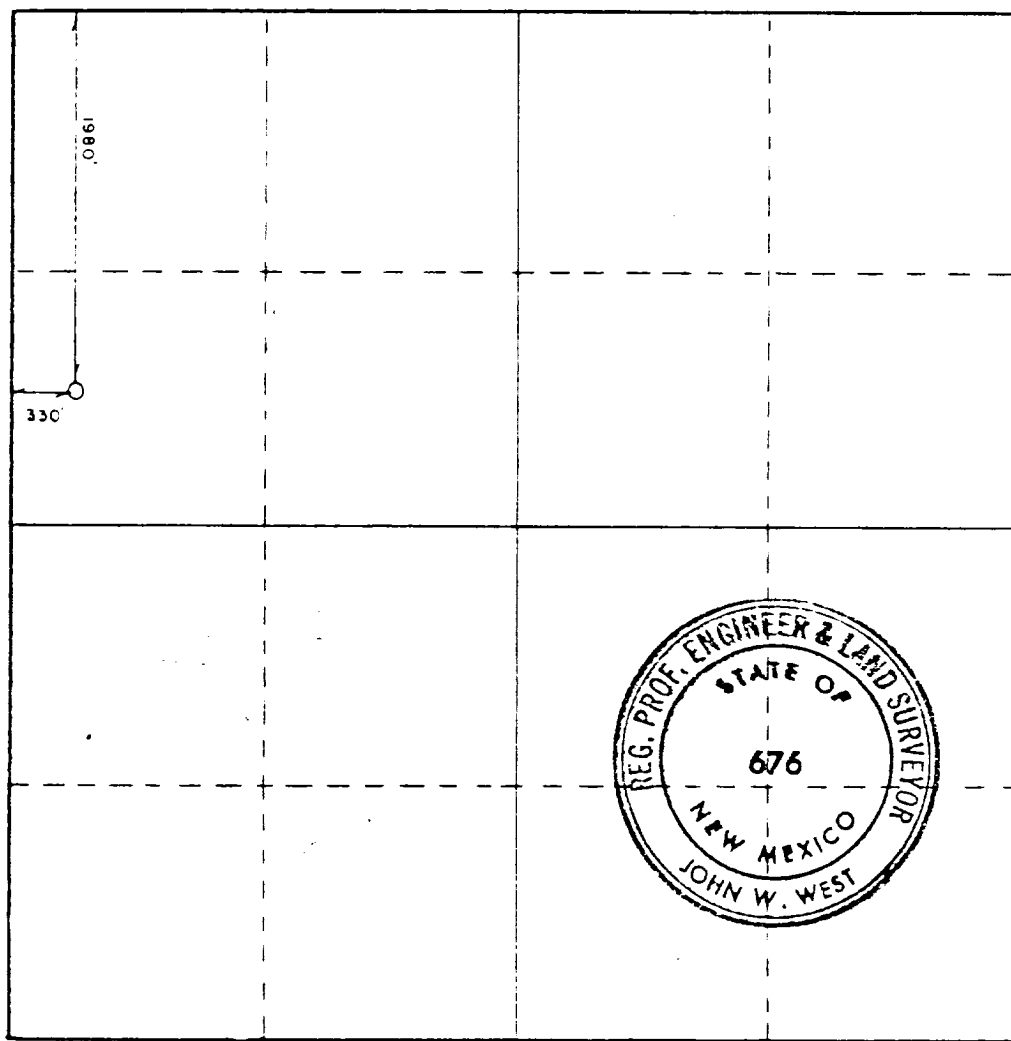
LE MAY ENERGY CORP.		SOUTH TOMAHAWK FEDERAL		1	
E	6	8 SOUTH	32 EAST	CHAVES	
1980 feet from the NORTH line and 330 feet from the WEST line					
4433.3	San Andres		Pool		Dedicated Acreage: 37.67

1. Outline the acreage dedicated to the subject well by colored pencil or hachure marks on the plat below.
2. If more than one lease is dedicated to the well, outline each and identify the ownership thereof (both as to working interest and royalty).
3. If more than one lease of different ownership is dedicated to the well, have the interests of all owners been consolidated by communitization, unitization, force-pooling, etc?

☐ Yes ☐ No If answer is "yes," type of consolidation _____

If answer is "no," list the owners and tract descriptions which have actually been consolidated. (Use reverse side of this form if necessary.) _____

No allowable will be assigned to the well until all interests have been consolidated (by communitization, unitization, forced-pooling, or otherwise) or until a non-standard unit, eliminating such interests, has been approved by the Commission.



CERTIFICATION

I hereby certify that the information contained herein is true and complete to the best of my knowledge and belief.

William J. LeMay
Name
President
Position
LeMay Energy Corp.
Company
11/15/83
Date

I hereby certify that the well location shown on this plat was plotted from field notes of actual surveys made by me or under my supervision, and that the same is true and correct to the best of my knowledge and belief.

Date Surveyed

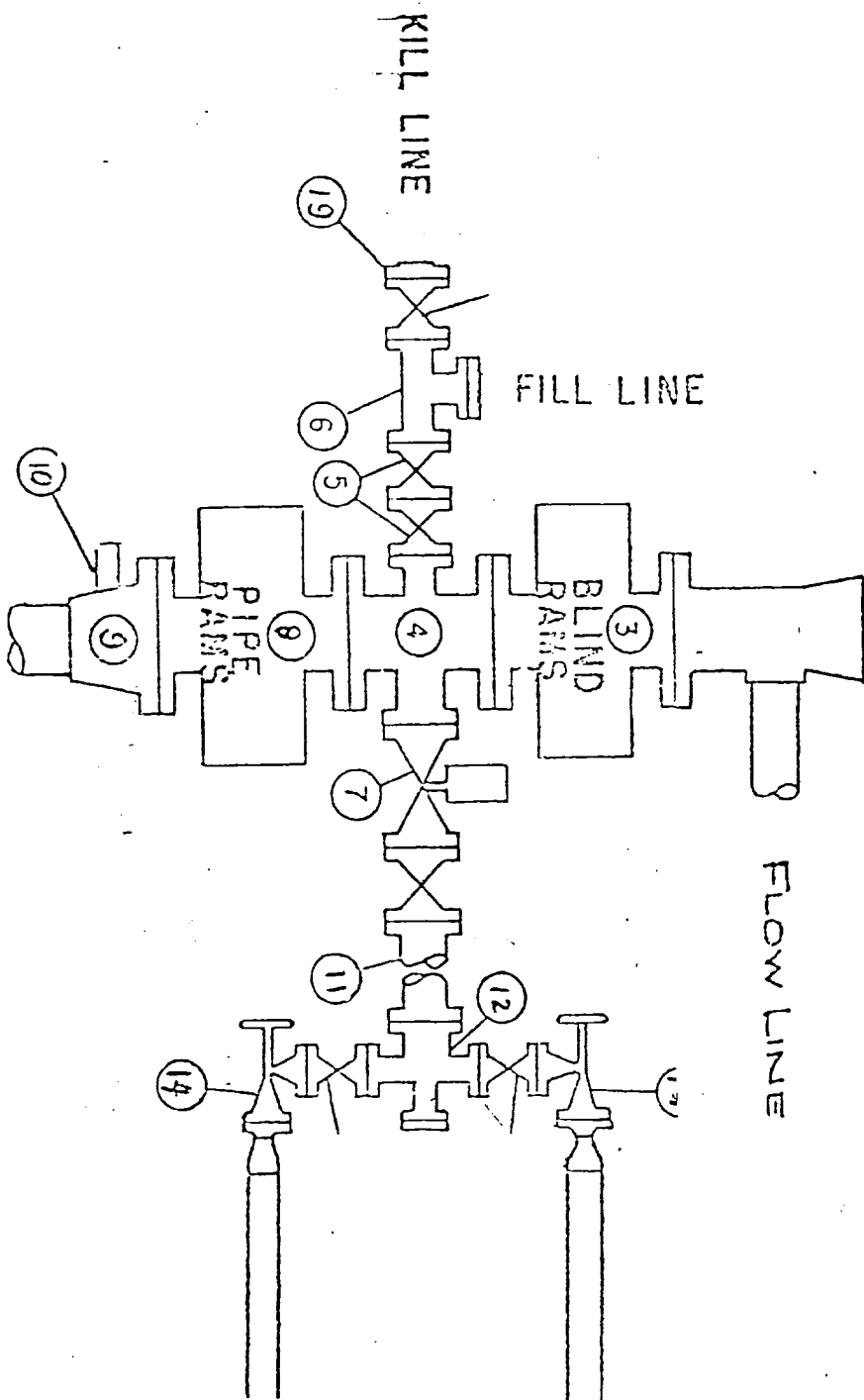
OCTOBER 25, 1983

Registered Professional Engineer and Land Surveyor

John W. West

Certificate No. JOHN W. WEST, 676
RONALD J. EIDSON, 3239

WEK DRILLING CO., INC. - Rig 1 & 3 BLOWOUT PREVENTER SPECIFICATION



RECEIVED
DEC 1 - 1983
O.C.D.
HOBBS OFFICE

DEC 1 1983
HOBBS OFFICE