

STATE OF NEW MEXICO  
ENERGY AND MINERALS DEPARTMENT

L CONSERVATION DIVISIO  
P. O. BOX 2088  
SANTA FE, NEW MEXICO 87501

30-005-20955

Form C-101  
Revised 10-1-78

NO. OF COPIES RECEIVED	
DISTRIBUTION	
SANTA FE	
FILE	
U.S.G.S.	
LAND OFFICE	
OPERATOR	

5A. Indicate Type of Lease  
STATE ☒ REC ☐  
5. State Oil & Gas Lease No.  
LG-0493

APPLICATION FOR PERMIT TO DRILL, DEEPEN, OR PLUG BACK

1a. Type of Work b. Type of Well OIL WELL <input checked="" type="checkbox"/> GAS WELL <input type="checkbox"/> OTHER <input type="checkbox"/> Name of Operator Yates Drilling Company 3. Address of Operator 207 S. 4th, Artesia, New Mexico 88210 4. Location of Well UNIT LETTER C LOCATED 990 FEET FROM THE North LINE 1980 FEET FROM THE West LINE OF SEC. 11 TWP. 13S RGE. 31E NMPM 19. Proposed Depth appr. 3100' 19A. Formation Queen 19B. History or C.T. Rotary 20. Elevations (show whether DF, HT, etc.) 4423' GL 21A. Kind & Status Plug. Bond Blanket 21B. Drilling Contractor not determined 22. Approx. Date Work will start ASAP		7. Unit Agreement Name 8. Farm or Lease Name Pebble Queen 9. Well No. 1 10. Field and Pool, or Wildcat Caprock Queen 11. County Chaves
--	--	--

PROPOSED CASING AND CEMENT PROGRAM

SIZE OF HOLE	SIZE OF CASING	WEIGHT PER FOOT	SETTING DEPTH	SACKS OF CEMENT	EST. TOP
12 1/4"	8 5/8"	24#	400'	250 sx	circ
7 7/8"	5 1/2"	14#	TD	300 sx	2000' frm su

We propose to drill and test the Queen and intermediate formations. Approximately 400' of surface casing will be set and cement circulated to shut off gravel and caving. If needed (lost circulation) 7" intermediate casing will be run to 2000' and cemented with enough cement calculated to tie back into the surface casing. If commercial, production casing will be run and cemented with adequate cover, perforated and stimulated as needed for production.

MUD PROGRAM: FW 400', 10# brine to TD. if needed.

BOP PROGRAM: BOP's will be installed when needed and tested daily.

Cement on the 5 1/2" casing must be brought from the top of the salt or anhydrite to the surface casing by either circulating with cement or a DV tool at the top of the salt.

4. ABOVE SPACE DESCRIBE PROPOSED PROGRAM: IF PROPOSAL IS TO DEEPEN OR PLUG BACK, GIVE DATA ON PRESENT PRODUCTIVE ZONE AND PROPOSED NEW PRODUCTIVE ZONE. GIVE BLOWOUT PREVENTER PROGRAM, IF ANY.

I hereby certify that the information above is true and complete to the best of my knowledge and belief.

Signed Manuel Rodriguez Title Regulatory Agent Date 12/21/83

(This space for State Use)  
ORIGINAL SEXTON  
DISTRICT 1 SUPERVISOR

APPROVED BY \_\_\_\_\_ TITLE \_\_\_\_\_ DATE \_\_\_\_\_

CONDITIONS OF APPROVAL, IF ANY:

DEC 27 1983

APPROVAL VALID FOR 180 DAYS  
PERMIT EXPIRES 6/27/84  
UNLESS DRILLING UNDERWAY

RECEIVED  
DEC 22 1983  
O.C.D.  
HOBBS OFFICE

**MEXICO OIL CONSERVATION COMMISSION  
WELL LOCATION AND ACREAGE DEDICATION PLAT**

Form C-102  
Supersedes C-128  
Effective 1-1-85

All distances must be from the outer boundaries of the Section.

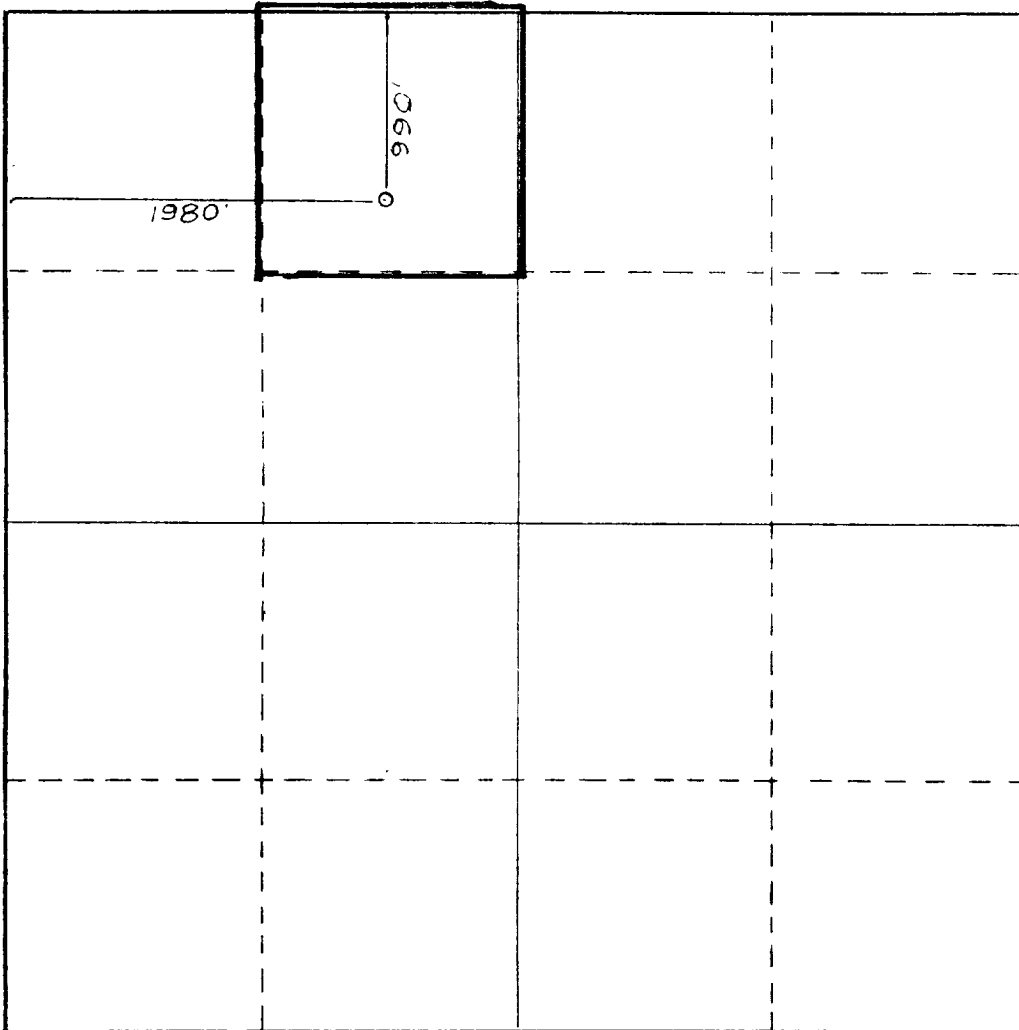
Operator <b>YATES DRILLING COMPANY</b>			Lease <b>Pebble Queen</b>		Well No.
Unit Letter <b>C</b>	Section <b>11</b>	Township <b>13 South</b>	Range <b>31 East</b>	County <b>Chaves</b>	
Actual Footage Location of Well: <b>990</b> feet from the <b>North</b> line and <b>1980</b> feet from the <b>West</b> line					
Ground Level Elev. <b>4423</b>	Producing Formation <b>Queen</b>		Pool <b>Caprock Queen</b>		Dedicated Acreage <b>40</b> Acres

1. Outline the acreage dedicated to the subject well by colored pencil or hachure marks on the plat below.
2. If more than one lease is dedicated to the well, outline each and identify the ownership thereof (both as to working interest and royalty).
3. If more than one lease of different ownership is dedicated to the well, have the interests of all owners been consolidated by communitization, unitization, force-pooling, etc?

☐ Yes    ☐ No    If answer is "yes," type of consolidation \_\_\_\_\_

If answer is "no," list the owners and tract descriptions which have actually been consolidated. (Use reverse side of this form if necessary.) \_\_\_\_\_

No allowable will be assigned to the well until all interests have been consolidated (by communitization, unitization, forced-pooling, or otherwise) or until a non-standard unit, eliminating such interests, has been approved by the Commission.

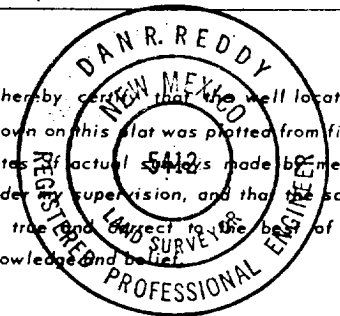


**CERTIFICATION**

I hereby certify that the information contained herein is true and complete to the best of my knowledge and belief.

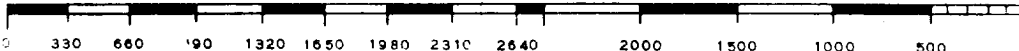
Name  
**Gliserio Rodriguez**  
Position  
**Regulatory Agent**  
Company  
**Yates Petroleum Corp.**  
Date  
**12/21/83**

I hereby certify that the well location shown on this plat was plotted from field notes of actual surveys made by me or under my supervision, and that the same is true and correct to the best of my knowledge and belief.



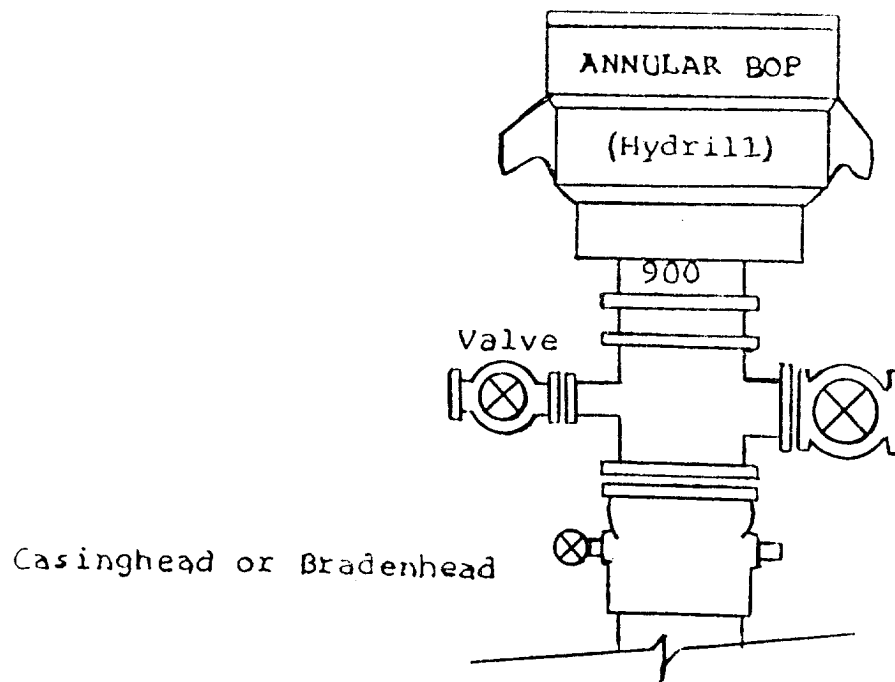
Date Surveyed  
**Dec. 3, 1983**  
Registered Professional Engineer  
and/or Land Surveyor

*Dan R. Reddy*  
Certificate No.  
**NMPE&LS #5412**



RECEIVED  
DEC 22 1983  
O.C.D.  
HOBBBS OFFICE

EXHIBIT B  
BDP DIAGRAM  
RATED 3000<sup>#</sup>



RECEIVED  
DEC 22 1983  
O.C.D.  
HOBBS OFFICE

68/82/2  
HOBBS