

NEW MEXICO OIL CONSERVATION COMMISSION
WELL LOCATION AND ACREAGE DEDICATION PLAT

Form O-101
Supersedes O-124
Effective 12-65

All distances must be from the outer boundaries of the Section

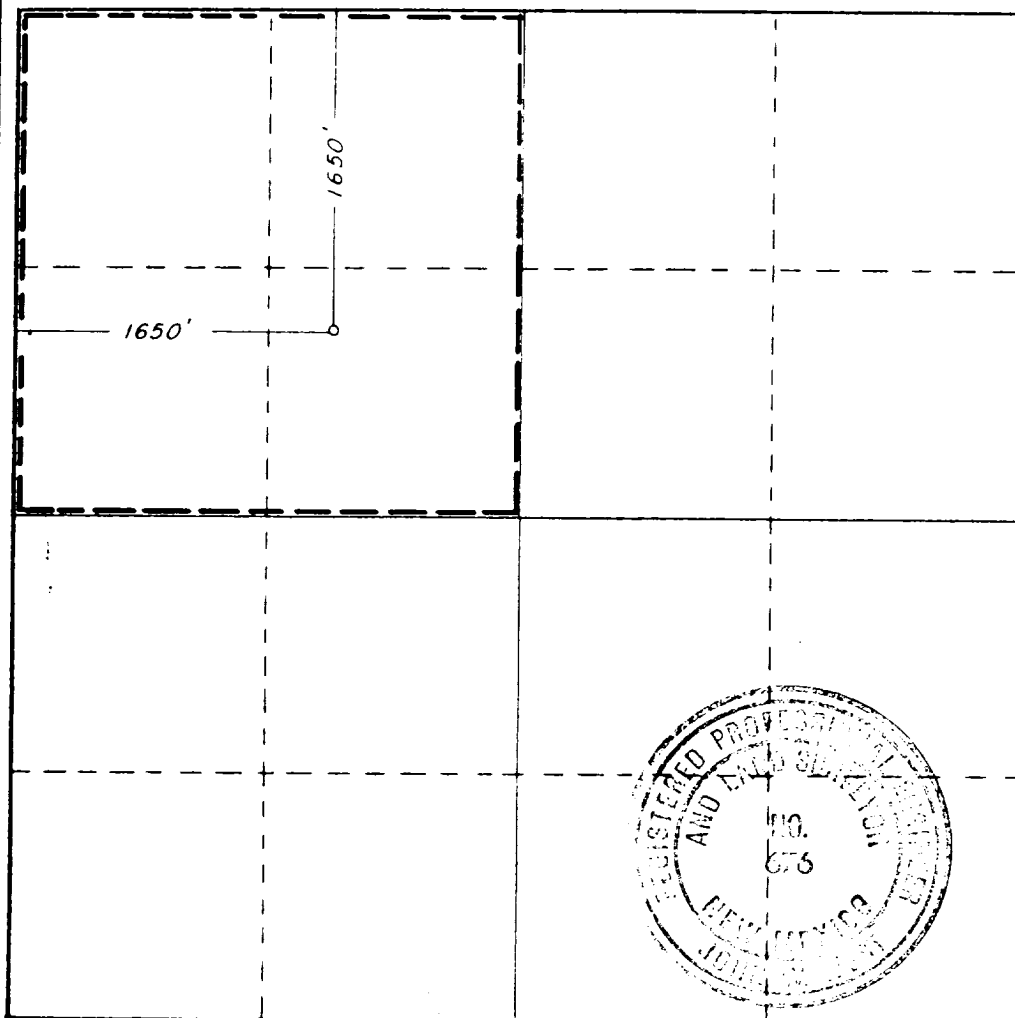
| | | | | | | | | |
|--|-------------------------------------|------------------------|--|-------------------------|--|---------------------------------|--|--|
| Operator John S. Goodrich | | | Lessee Lois Federal | | | Acres 1 | | |
| Unit Letter F | Section 4 | Township 13S | Range 31E | County Chaves | | | | |
| Actual Footage Location of Well: 1650 feet from the North line and 1650 feet from the West line | | | | | | | | |
| Ground Level Elev. 4080.7 | Producing Formation QUEEN | | Pool SE CHAVES-QUEEN GAS AREA ASSOC. | | | Dedicated Acreage 160 | | |

1. Outline the acreage dedicated to the subject well by colored pencil or hachure marks on the plat below.
2. If more than one lease is dedicated to the well, outline each and identify the ownership thereof (both as to working interest and royalty).
3. If more than one lease of different ownership is dedicated to the well, have the interests of all owners been consolidated by communitization, unitization, force-pooling, etc?

☐ Yes ☐ No If answer is "yes," type of consolidation _____

If answer is "no," list the owners and tract descriptions which have actually been consolidated. (Use reverse side of this form if necessary.) _____

No allowable will be assigned to the well until all interests have been consolidated (by communitization, unitization, forced-pooling, or otherwise) or until a non-standard unit, eliminating such interests, has been approved by the Commission.



CERTIFICATION

I hereby certify that the information contained herein is true and complete to the best of my knowledge and belief.

Arthur R. Brown
Name
Arthur R. Brown

Position

Agent

Company

JOHN S. GOODRICH

Date

April 12, 1984

I hereby certify that the well location shown on this plat was plotted from field notes of actual surveys made by me or under my supervision, and that the same is true and correct to the best of my knowledge and belief.

Date Surveyed

April 10, 1984

Registered Professional Engineer and/or Land Surveyor

John W. West
Certificate No. JOHN W. WEST, 676

RONALD J. EIDSON, 3239

