

UNITED STATES
DEPARTMENT OF THE INTERIOR
GEOLOGICAL SURVEY

APPLICATION FOR PERMIT TO DRILL, DEEPEN, OR PLUG BACK

1a. TYPE OF WORK

DRILL ☒DEEPEN ☐PLUG BACK ☐

b. TYPE OF WELL

OIL
WELL ☐GAS
WELL ☒

OTHER

SINGLE
ZONE ☐MULTIPLE
ZONE ☐

2. NAME OF OPERATOR

Yates Drilling Company

3. ADDRESS OF OPERATOR

207 South 4th Street - Artesia, New Mexico 88210

4. LOCATION OF WELL (Report location clearly and in accordance with any State requirements.)*

At surface 1980' FNL & 990' FEL Sec. 4-13S-31E

At proposed prod. zone

14. DISTANCE IN MILES AND DIRECTION FROM NEAREST TOWN OR POST OFFICE*

Approx. 25 miles north of Maljamar N.M.

15. DISTANCE FROM PROPOSED* 290'

LOCATION TO NEAREST
PROPERTY OR LEASE LINE, FT.
(Also to nearest drlg. unit line, if any)

16. NO. OF ACRES IN LEASE

160

17. NO. OF ACRES ASSIGNED
TO THIS WELL18. DISTANCE FROM PROPOSED LOCATION*
TO NEAREST WELL, DRILLING, COMPLETED,
OR APPLIED FOR, ON THIS LEASE, FT.

19. PROPOSED DEPTH

Approx. 2850'

20. ROTARY OR CABLE TOOLS

Rotary

21. ELEVATIONS (Show whether DF, RT, GR, etc.)

Unknown

22. APPROX. DATE WORK WILL START*

As soon as approved

23.

PROPOSED CASING AND CEMENTING PROGRAM

SIZE OF HOLE	SIZE OF CASING	WEIGHT PER FOOT	SETTING DEPTH	QUANTITY OF CEMENT
11"	8 5/8"	24#	350	Circulate
7 7/8"	4 1/2"	9.5#	Approx. 2850'	100 sxs.

We propose to drill to test the Queen formation, which is expected at approx. 2700'. Estimated TD is 2850'. If gas production is encountered, will run 4 1/2" production string to TD. Will use 8 5/8" API 900 Series, double ram blowout preventers below surface casing.

IN ABOVE SPACE DESCRIBE PROPOSED PROGRAM: If proposal is to deepen or plug back, give data on present productive zone and proposed productive zone. If proposal is to drill or deepen directionally, give pertinent data on subsurface locations and measured and true vertical depths. Give blowout preventer program, if any.

24.

SIGNED

Clifton Layd

TITLE

Dist. Supt.

DATE

3-27-72

(This space for Federal or State office use)

PERMIT NO.

APPROVAL DATE

APPROVED BY

CONDITIONS OF APPROVAL, IF ANY:

TITLE

THIS APPROVAL IS RESCINDED IF OPERATIONS
ARE NOT COMMENCED WITHIN 3 MONTHS.
EXPIRES *JUN 30 1972*
*See Instructions On Reverse Side

DATE

APPROVED
MAR 31 1972
11:15
BEEKMAN
MANAGER

RECEIVED
MAR 27 1972
U.S. GEOLOGICAL SURVEY
ARTESIA, NEW MEXICO

RECEIVED

JUN 5 1972

OIL CONSERVATION COMM.
HOBBS, N. M.

NEW MEXICO OIL CONSERVATION COMMISSION
WELL LOCATION AND ACREAGE DEDICATION PLAT

Form C-102
Supersedes C-128
Effective 1-1-65

All distances must be from the outer boundaries of the Section.

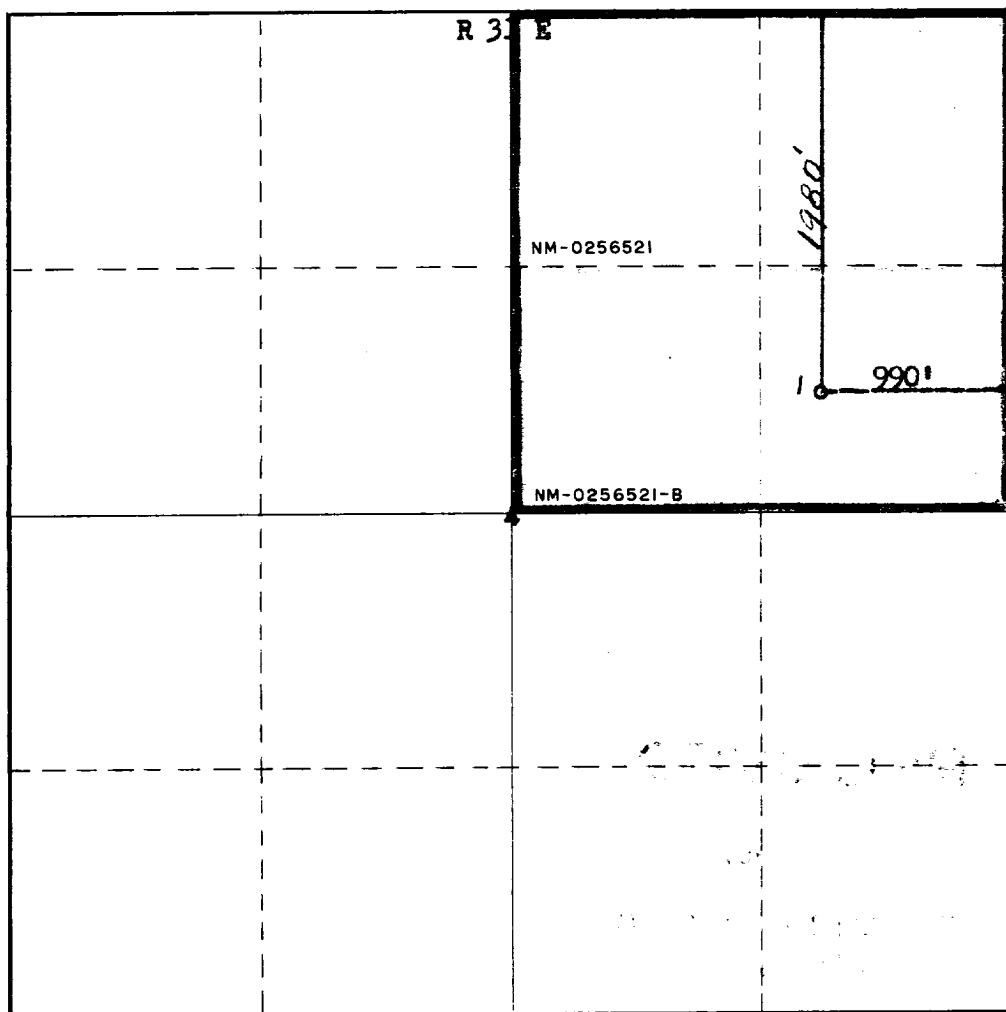
Operator YATES DRILLING COMPANY			Lease FEDERAL 7/4/ "AA"		Well No. 1
Unit Letter H	Section 4	Township 13 South	Range 31 East	County Chaves	
Actual Footage Location of Well: 1980 feet from the North line and 990 feet from the East line					
Ground Level Elev. Unknown	Producing Formation Queen		Pool Wildcat	Dedicated Acreage: 160 Acres	

1. Outline the acreage dedicated to the subject well by colored pencil or hachure marks on the plat below.
2. If more than one lease is dedicated to the well, outline each and identify the ownership thereof (both as to working interest and royalty).
3. If more than one lease of different ownership is dedicated to the well, have the interests of all owners been consolidated by communitization, unitization, force-pooling, etc?

☒ Yes ☐ No If answer is "yes," type of consolidation **To Be Communitized**

If answer is "no," list the owners and tract descriptions which have actually been consolidated. (Use reverse side of this form if necessary.)

No allowable will be assigned to the well until all interests have been consolidated (by communitization, unitization, forced-pooling, or otherwise) or until a non-standard unit, eliminating such interests, has been approved by the Commission.



CERTIFICATION

I hereby certify that the information contained herein is true and complete to the best of my knowledge and belief.

Clifton Loyd
Name

Clifton Loyd

Position

Dist. Supt.

Company

Yates Drilling Company

Date

3-27-72

RECEIVED
MAR 27 1972
U. S. GEOLOGICAL SURVEY
ARTESIA, NEW MEXICO
I hereby certify that the well location shown on this plat was plotted from field notes, actual surveys made by me or under my supervision and that the same is true and correct to the best of my knowledge and belief.

Date Surveyed

March 27th, 1972

Registered Professional Engineer and/or Land Surveyor

James H. Brown

Certificate No. **542**

T
13
S

RECEIVED
APR 12 1972
OIL CONSERVATION COMM.
HOBBS, N. M.

RECEIVED

APR 16 1972
OIL CONSERVATION COMM.
HOBBS, N. M.



RECEIVED

APR 3 1972

O. C. C.
ARTESIA, OFFICE