

N MEXICO OIL CONSERVATION COMMISS
WELL LOCATION AND ACREAGE DEDICATION PLAT

Form C-102
 Supersedes C-128
 Effective 1-1-65

All distances must be from the outer boundaries of the Section

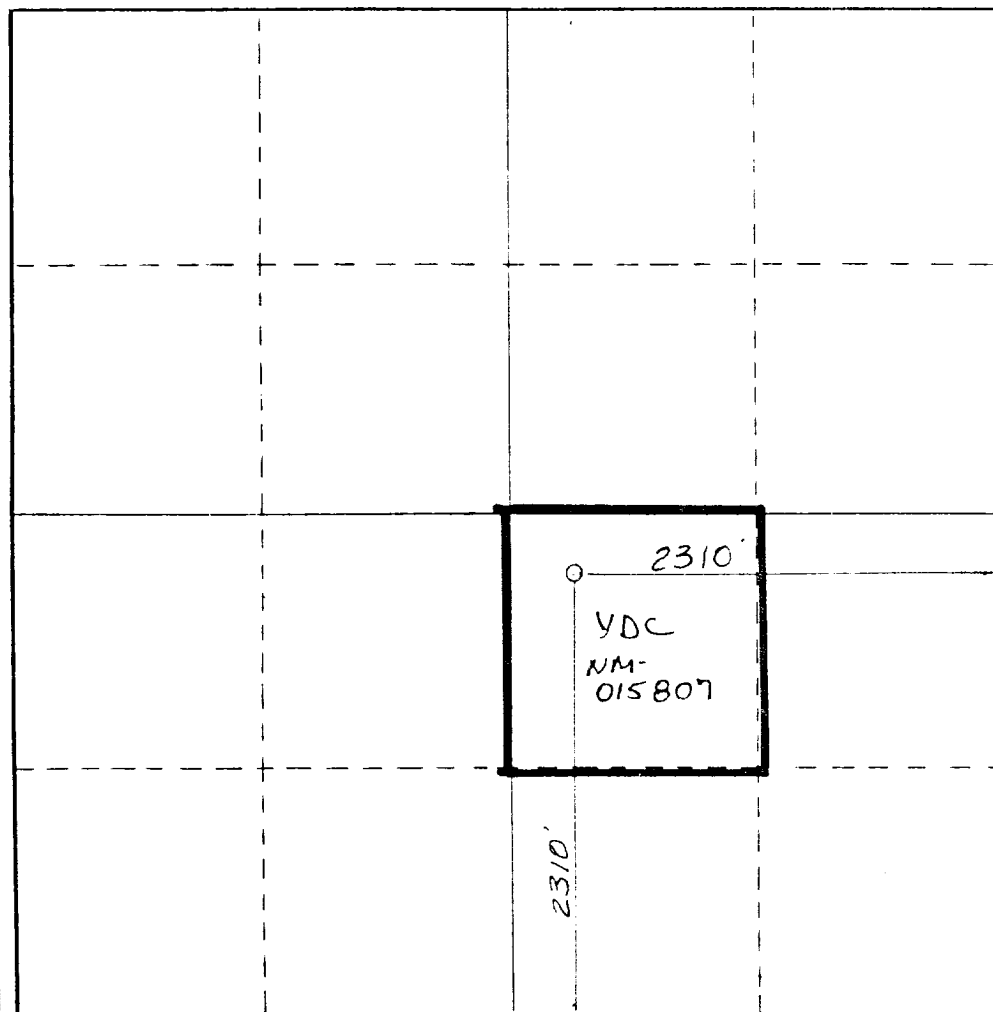
Operator YATES DRILLING COMPANY			Lease Garner Federal			Well No. 2		
Unit Letter J	Section 34	Township 12 South	Range 31 East	County Chaves				
Actual Footage Location of Well: 2310 feet from the South line and 2310 feet from the East line								
Ground Level Elev. 4430.	Producing Formation Queen		Pool Caprock Queen			Consent Acres 40		

1. Outline the acreage dedicated to the subject well by colored pencil or hachure marks on the plat below.
2. If more than one lease is dedicated to the well, outline each and identify the ownership thereof (both as to working interest and royalty).
3. If more than one lease of different ownership is dedicated to the well, have the interests of all owners been consolidated by communitization, unitization, force-pooling, etc?

☐ Yes ☐ No If answer is "yes," type of consolidation _____

If answer is "no," list the owners and tract descriptions which have actually been consolidated. (Use reverse side of this form if necessary.) _____

No allowable will be assigned to the well until all interests have been consolidated (by communitization, unitization, forced-pooling, or otherwise) or until a non-standard unit, eliminating such interests, has been approved by the Commission.



CERTIFICATION

I hereby certify that the information contained herein is true and complete to the best of my knowledge and belief.

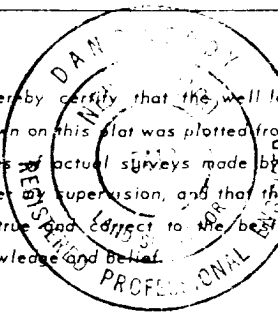
Gliserio Rodriguez
 Name

Gliserio Rodriguez
 Position

Regulatory Agent
 Company

Yates Petroleum Corp.
 Date

I hereby certify that the well location shown on this plat was plotted from field notes of actual surveys made by me or under my supervision, and that the same is true and correct to the best of my knowledge and belief.



Date Surveyed

April 19, 1984

Registered Professional Engineer
 and/or Land Surveyor

Dan R. Reddy
 Certificate No.

NM PE&LS #5412

0 330 660 990 1320 1650 1980 2310 2640 2000 1500 1000 500 0