

All Distances must be from the outer boundaries of the Section.

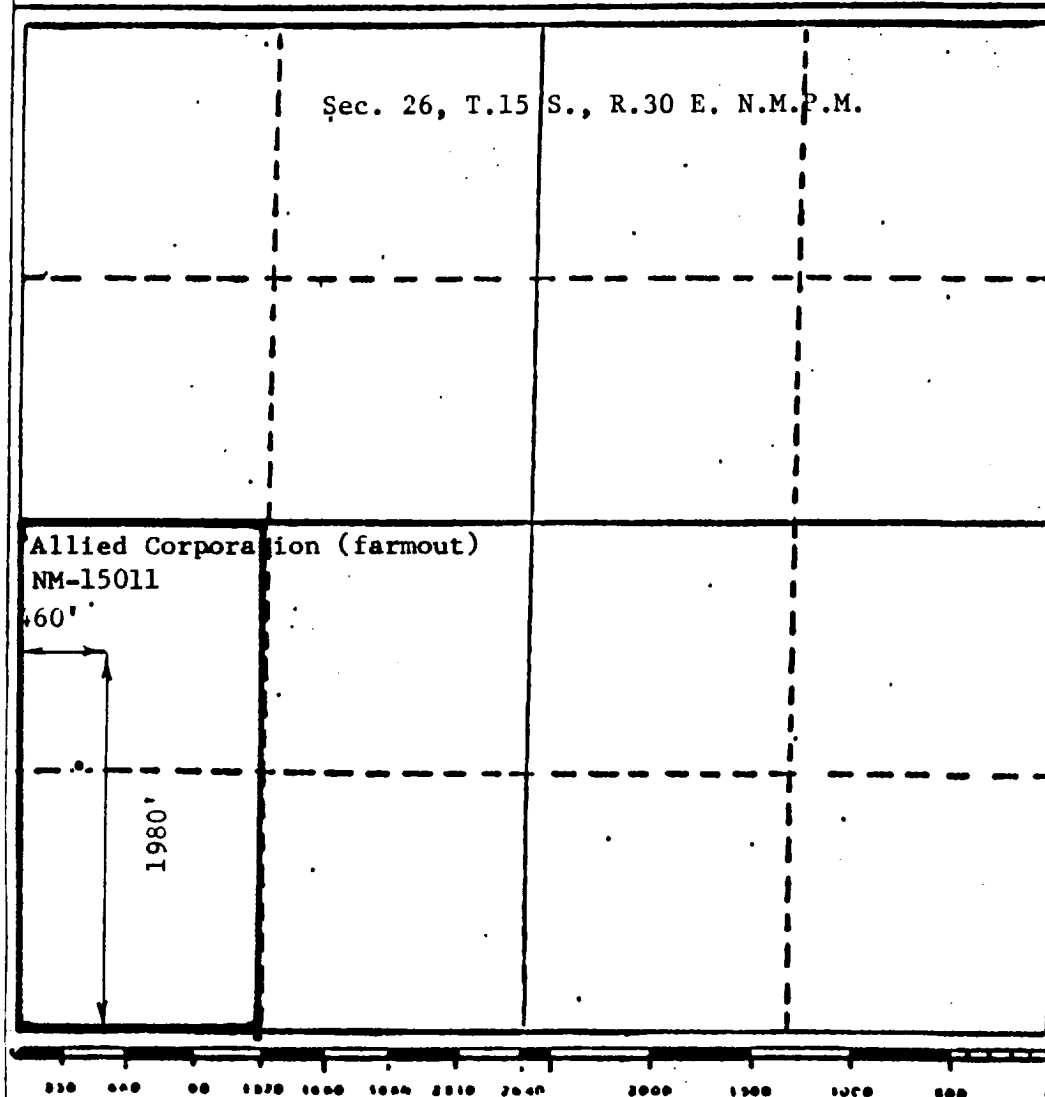
Operator Hilliard Oil & Gas			Lease Hilliard 'B' Federal		Well No. #1
Unit Letter L	Section 26	Township 15 South	Range 30 East	County Chaves	
Actual Footage Location of Well 460 feet from the West line and 1980 feet from the South line					
Ground Level Elev. 4087	Producing Formation Strawn		Pool Cedar Point Strawn		Dedicated Acreage 80' Acres

1. Outline the acreage dedicated to the subject well by colored pencil or hatchure marks on the plat below.
2. If more than one lease is dedicated to the well, outline each and identify the ownership thereof (both as to working interest and royalty).
3. If more than one lease of different ownership is dedicated to the well, have the interests of all owners been consolidated by communitization, unitization, force-pooling, etc?

☐ Yes ☐ No If answer is "yes," type of consolidation _____

If answer is "no," list the owners and tract descriptions which have actually been consolidated. (Use reverse side of this form if necessary.) _____

No allowable will be assigned to the well until all interests have been consolidated (by communitization, unitization, forced-pooling, or otherwise) or until a non-standard unit, eliminating such interests, has been approved by the Division



CERTIFICATION

I hereby certify that the information contained herein is true and complete to the best of my knowledge and belief.

George R. Smith

Name
George R. Smith

Position
Agent

Company
Hilliard Oil & Gas, Inc.

Date
August 24, 1984

I hereby certify that the well location shown on this plat was plotted from field notes of actual surveys made by me or under my supervision, and that the same is true and correct to the best of my knowledge and belief.

Date Surveyed
August 6, 1984
Registered Professional Engineer
John D. Jaques, L.S.
Certificate No. 6290

RECEIVED

SEP 16 1984

NOV 1984

