

OIL CONSERVATION DIVISION

STATE OF NEW MEXICO
ENERGY AND MINERALS DEPARTMENTP. O. BOX 2084
SANTA FE, NEW MEXICO 87501Form C-102
Revised 10-1-78

All distances must be from the outer boundaries of the Section.

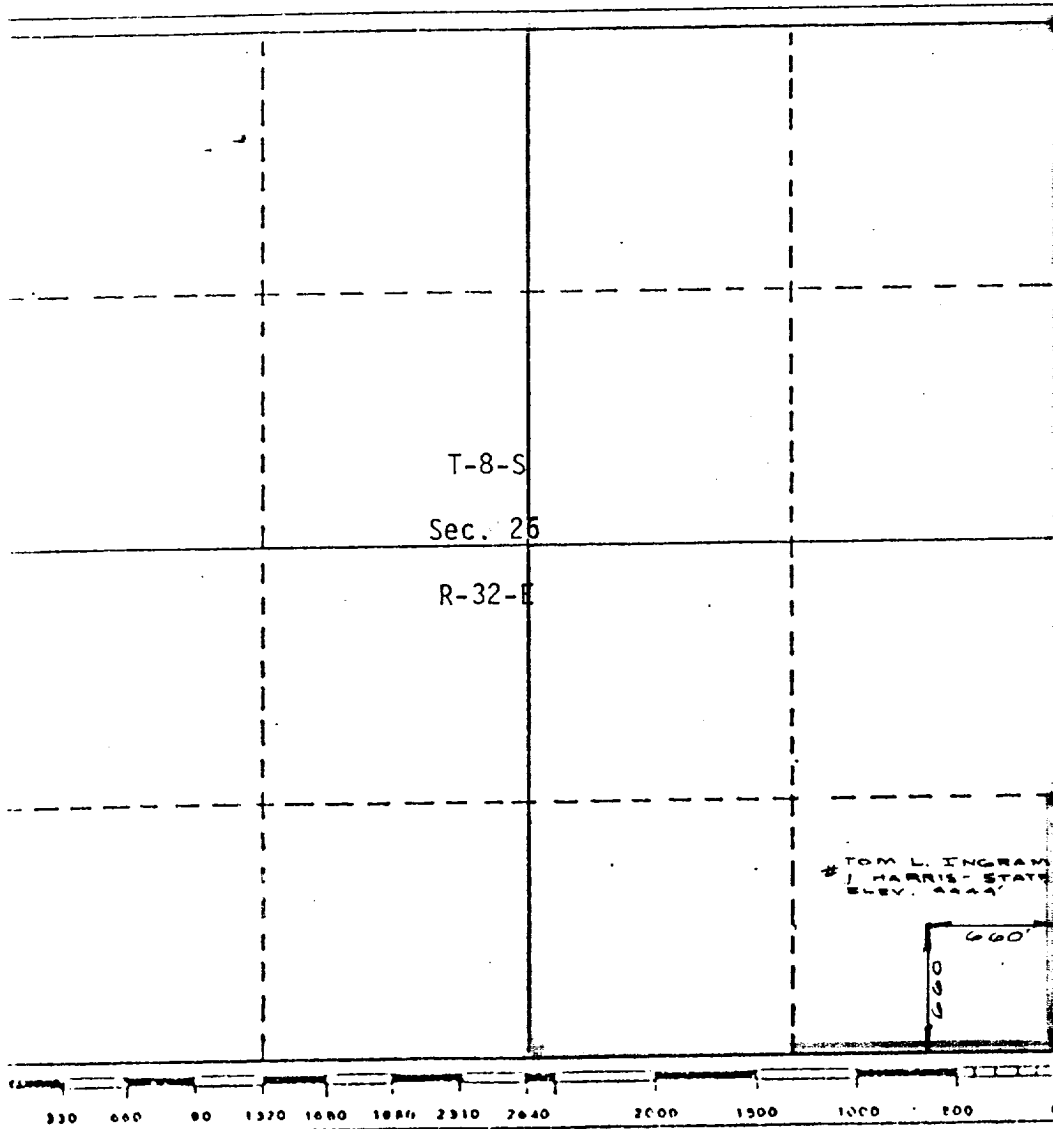
Operator Tom L. Ingram			Lease Harris-State		Well No. 1
Well Letter P	Section 26	Township 8 South	Range 32 East	County Chaves	
Actual Postage Location of Well: 660.0 feet from the south line and 660.0 feet from the east line.					
Ground Level Elev. 4444	Producing Formation San Andres		Pool West Hobbs Wildcat		Dedicated Acreage: 40 Acres

1. Outline the acreage dedicated to the subject well by colored pencil or hatchure marks on the plat below.
2. If more than one lease is dedicated to the well, outline each and identify the ownership thereof (both as to working interest and royalty).
3. If more than one lease of different ownership is dedicated to the well, have the interests of all owners been consolidated by communitization, unitization, force-pooling, etc?

☐ Yes ☐ No If answer is "yes," type of consolidation _____

If answer is "no," list the owners and tract descriptions which have actually been consolidated. (Use reverse side of this form if necessary.) _____

No allowable will be assigned to the well until all interests have been consolidated (by communitization, unitization, forced-pooling, or otherwise) or until a non-standard unit, eliminating such interests, has been approved by the Division.



CERTIFICATION

I hereby certify that the information contained herein is true and complete to the best of my knowledge and belief.

Name **Tom L. Ingram**

Position **Operator**

Company **Tom L. Ingram**

Date **November 9, 1984**

I hereby certify that the well location shown on this plat was plotted from field notes of actual surveys made by me or under my supervision, and that the same is true and correct to the best of my knowledge and belief.

Date Surveyed **11/9/84**
 Registered Professional Engineer
 and/or Land Surveyor
W. B. W. CO.
 Certificate No. **7929**

RECEIVED BY
NOV 16 1964
O. C. D.
ARTIST'S OFFICE