

UNITED STATES
DEPARTMENT OF THE INTERIOR
BUREAU OF LAND MANAGEMENT

APPLICATION FOR PERMIT TO DRILL, DEEPEN, OR PLUG BACK

1a. TYPE OF WORK DRILL <input checked="" type="checkbox"/> DEEPEN <input type="checkbox"/> PLUG BACK <input type="checkbox"/>			RECEIVED BY DEC 03 1984 O. C. D. ARTESIA, OFFICE																
b. TYPE OF WELL OIL WELL <input checked="" type="checkbox"/> GAS WELL <input type="checkbox"/> OTHER <input type="checkbox"/>																			
2. NAME OF OPERATOR Fred G. Yates, Inc.																			
3. ADDRESS OF OPERATOR Sunwest Centre, Suite 919, Roswell, NM 88201																			
4. LOCATION OF WELL (Report location clearly and in accordance with any State requirements.) At surface 1980' FSL, 660' FEL, NESE of 6-8-32 At proposed prod. zone Same																			
15. DISTANCE IN MILES AND DIRECTION FROM NEAREST TOWN OR POST OFFICE* 18 miles North of Caprock, New Mexico																			
16. DISTANCE FROM PROPOSED* LOCATION TO NEAREST PROPERTY OR LEASE LINE, FT. (Also to nearest drlg. unit line, if any) 660'			17. NO. OF ACRES IN LEASE 990.35		18. NO. OF ACRES ASSIGNED TO THIS WELL 40														
19. DISTANCE FROM PROPOSED LOCATION* TO NEAREST WELL, DRILLING, COMPLETED, OR APPLIED FOR, ON THIS LEASE, FT. 4488'			20. PROPOSED DEPTH 4400'		21. ROTARY OR CABLE TOOLS Rotary														
22. ELEVATIONS (Show whether DF, RT, GR, etc.) G.L. 4516.8'					23. APPROX. DATE WORK WILL START* 12-3-84														
24. PROPOSED CASING AND CEMENTING PROGRAM																			
<table border="1"><thead><tr><th>SIZE OF HOLE</th><th>SIZE OF CASING</th><th>WEIGHT PER FOOT</th><th>SETTING DEPTH</th><th>QUANTITY OF CEMENT</th></tr></thead><tbody><tr><td>11 - 12 1/4</td><td>8 5/8</td><td>24.0#</td><td>1725'</td><td rowspan="2">Sufficient to circulate to surface 300 sacks or 500' above pay base of salt PVC</td></tr><tr><td>7 7/8</td><td>4 1/2</td><td>9.50#</td><td>4260'</td></tr></tbody></table>						SIZE OF HOLE	SIZE OF CASING	WEIGHT PER FOOT	SETTING DEPTH	QUANTITY OF CEMENT	11 - 12 1/4	8 5/8	24.0#	1725'	Sufficient to circulate to surface 300 sacks or 500' above pay base of salt PVC	7 7/8	4 1/2	9.50#	4260'
SIZE OF HOLE	SIZE OF CASING	WEIGHT PER FOOT	SETTING DEPTH	QUANTITY OF CEMENT															
11 - 12 1/4	8 5/8	24.0#	1725'	Sufficient to circulate to surface 300 sacks or 500' above pay base of salt PVC															
7 7/8	4 1/2	9.50#	4260'																

Well will be drilled to total depth at approximately 4400' and all potential oil and gas zones will be evaluated. If commercial production is indicated, well will be selectively perforated and stimulated. Enclosed are:

1. Well location and dedication plat.
2. Supplemental Drilling Data.
3. Surface Use Plan.

Gas is not dedicated to a pipeline.

IN ABOVE SPACE DESCRIBE PROPOSED PROGRAM: If proposal is to deepen or plug back, give data on present productive zone and proposed new productive zone. If proposal is to drill or deepen directionally, give pertinent data on subsurface locations and measured and true vertical depths. Give blowout preventer program, if any.

24. SIGNATURE John P. Deike TITLE Engineer DATE 11/26/84
(This space for Federal or State office use)

PERMIT NO. _____ APPROVAL DATE _____
APPROVED BY S/Levi Deike, Acting TITLE Area Manager DATE 11-30-84
CONDITIONS OF APPROVAL, IF ANY:

*See Instructions On Reverse Side

N. MEXICO OIL CONSERVATION COMMISS.
WELL LOCATION AND ACREAGE DEDICATION PLAT

Form C-102
 Supersedes C-128
 Effective 1-1-65

All distances must be from the outer boundaries of the Section

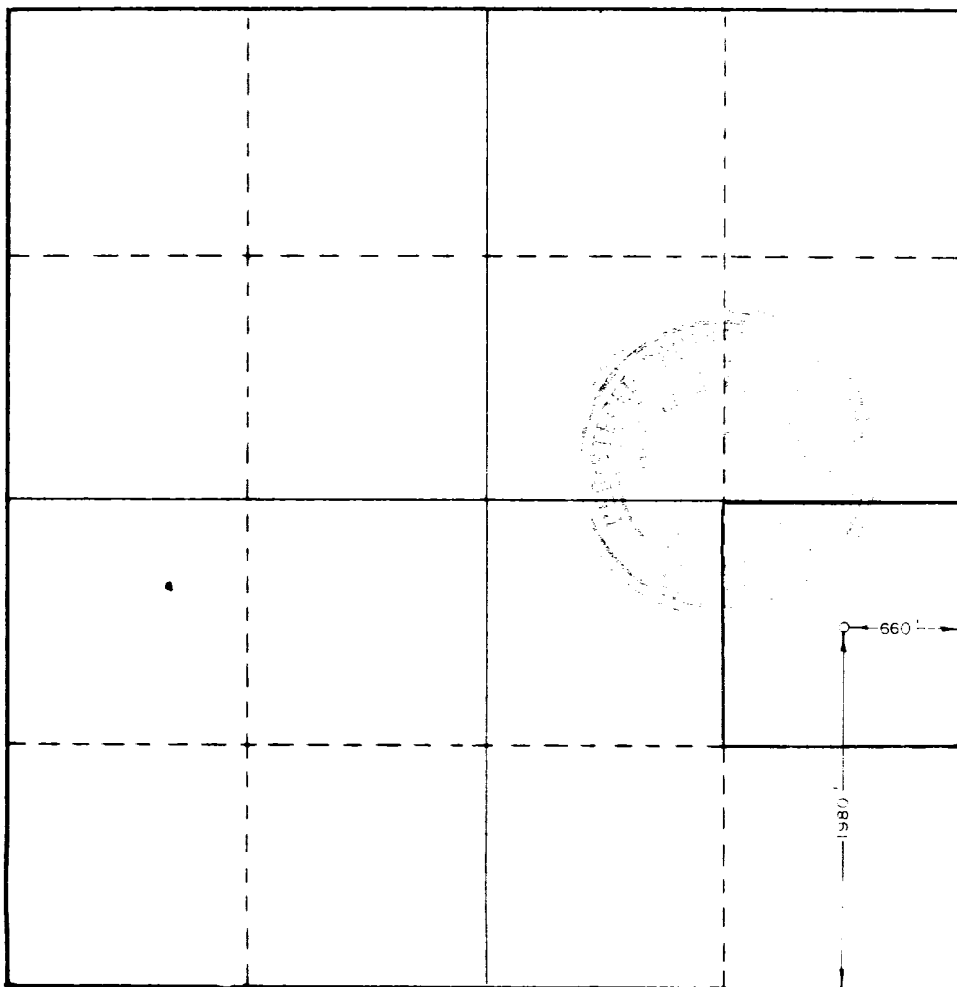
Operator FRED G. YATES INC.			Lease SOUTH TOMAHAWK FEDERAL		Well No. 3
Unit Letter 1	Section 6	Township 8 SOUTH	Range 32 EAST	County CHAVES	
Actual Footage Location of Well: 1980 feet from the SOUTH line and 660 feet from the EAST line					
Ground Level Elev. 4516.8	Producing Formation San Andres		Pool	Dedicated Acreage: 40 Acres	

1. Outline the acreage dedicated to the subject well by colored pencil or hachure marks on the plat below.
2. If more than one lease is dedicated to the well, outline each and identify the ownership thereof (both as to working interest and royalty).
3. If more than one lease of different ownership is dedicated to the well, have the interests of all owners been consolidated by communitization, unitization, force-pooling, etc?

☐ Yes ☐ No If answer is "yes;" type of consolidation _____

If answer is "no," list the owners and tract descriptions which have actually been consolidated. (Use reverse side of this form if necessary.) _____

No allowable will be assigned to the well until all interests have been consolidated (by communitization, unitization, forced-pooling, or otherwise) or until a non-standard unit, eliminating such interests, has been approved by the Commission.



CERTIFICATION

I hereby certify that the information contained herein is true and complete to the best of my knowledge and belief.

John R. McMinn

Name *John R. McMinn*

Position

Engineer

Company

Fred G. Yates, Inc.

Date

11-26-84

I hereby certify that the well location shown on this plat was plotted from field notes of actual surveys made by me or under my supervision, and that the same is true and correct to the best of my knowledge and belief.

Date Surveyed

NOVEMBER 21, 1984

Registered Professional Engineer
 and/or Land Surveyor

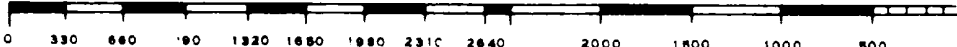
John W. West

Certificate No. **JOHN W. WEST,**

676

RONALD J. EIDSON,

3239



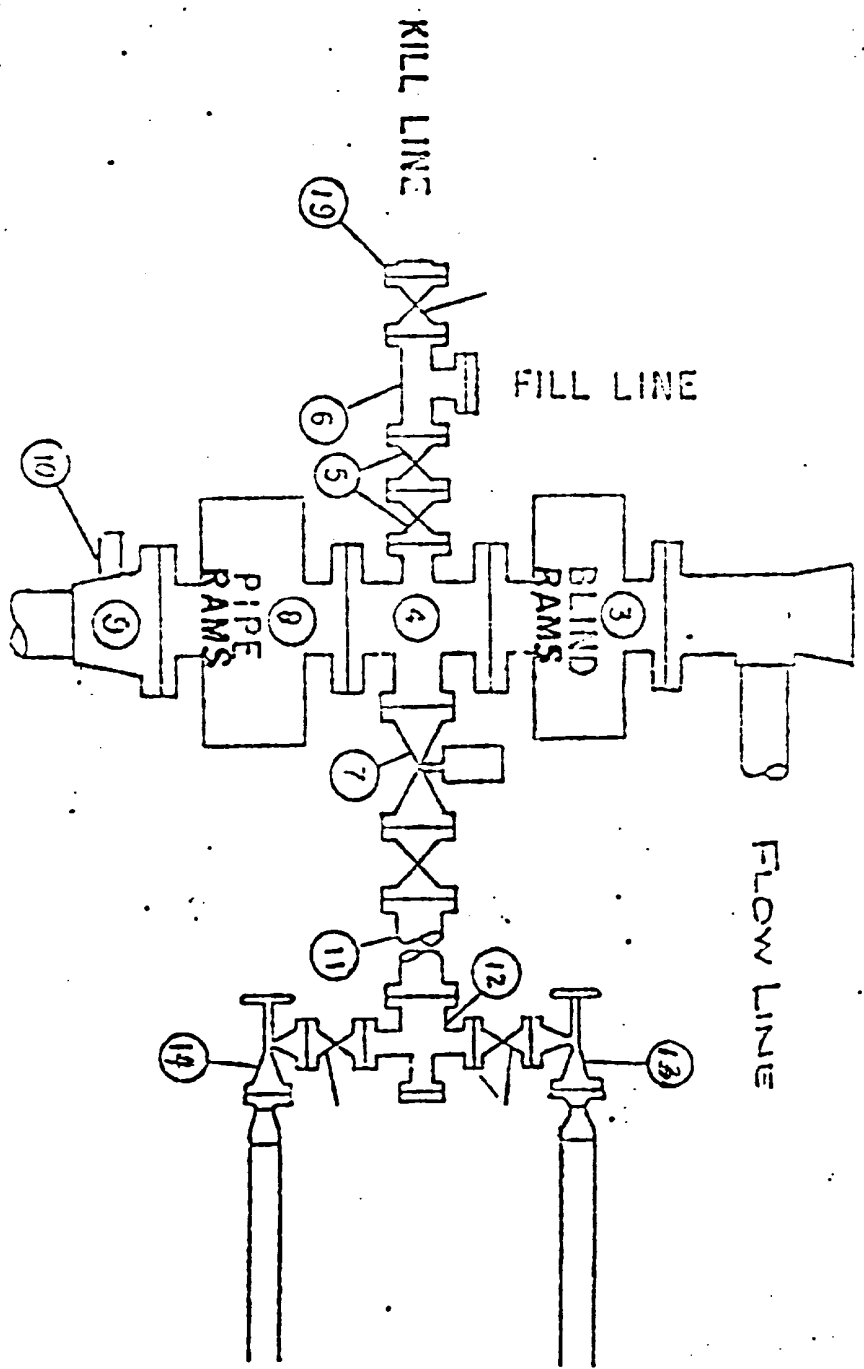
RECEIVED NOV 23 1984

RECEIVED
DEC -4 1984
FBI
FEDERAL BUREAU OF INVESTIGATION

Exhibit C

WEK DRILLING CO., INC. - Rigs 1 & 3.

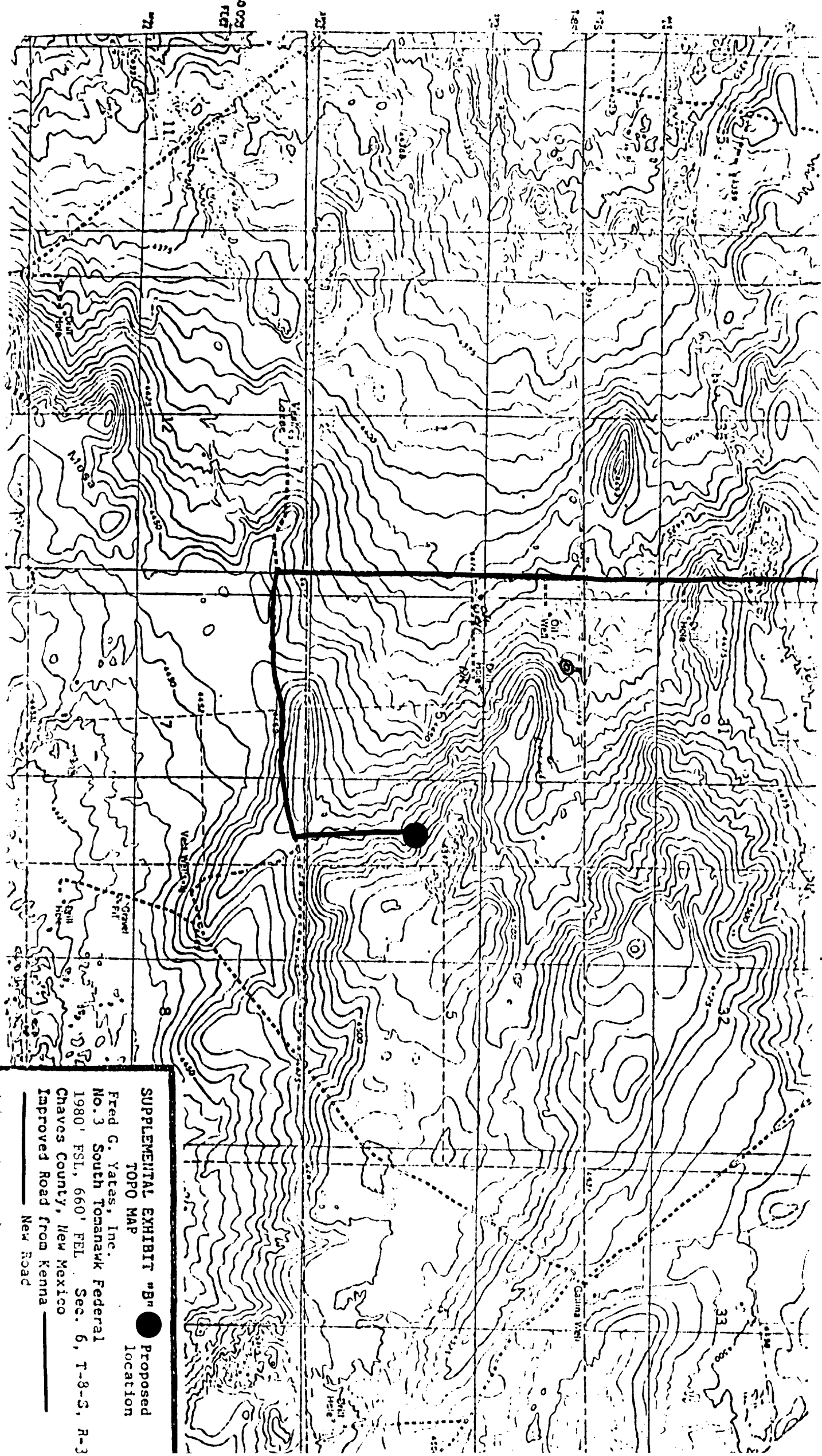
BLOWOUT PREVENTER SPECIFICATION



RECEIVED

DEC - 4 1984

S.C.D.
NOTES OFFICE



SUPPLEMENTAL EXHIBIT "B" ● Proposed
TOPO MAP location

Fred G. Yates, Inc.
No. 3 South Tomahawk Federal
1980' FSL, 660' FEL Sec. 6, T-8-S, R-3
Chaves County, New Mexico
Improved Road from Kenna —
New Road

11/29/84 Revisited across plan

Cement Land
Leg

7-25-85

RECEIVED

DEC -4 1984

CO.
HONOLULU OFFICE

FILE