

NO. OF COPIES RECEIVED	
DISTRIBUTION	
SANTA FE	
FILE	
U.S.G.S.	
LAND OFFICE	
OPERATOR	

5A. Indicate Type of Lease  
STATE ☐ REC ☒

5. State Oil &amp; Gas Lease No.

## APPLICATION FOR PERMIT TO DRILL, DEEPEN, OR PLUG BACK

1a. Type of Work

DRILL ☒DEEPEN ☐PLUG BACK ☐

b. Type of Well

OIL WELL ☒GAS WELL ☐

OTHER

SINGLE ZONE ☐MULTIPLE ZONE ☐

2. Name of Operator

YATES DRILLING COMPANY

3. Address of Operator

207 South Fourth Street, Artesia, New Mexico 88210

4. Location of Well

UNIT LETTER M LOCATED 660 FEET FROM THE South LINE

AND 330 FEET FROM THE West LINE OF SEC. 23 TWP. 12S RGE. 31E NMPM

7. Unit Agreement Name

8. Farm or Lease Name

Graham

9. Well No.

1

10. Field and Pool, or Wildcat

SE Chaves Queen

12. County

Chaves

19. Proposed Depth

3100'

19A. Formation

Queen

20. Rotary or C.T.

Rotary

21. Elevations (Show whether DF, KI, etc.)

4422'

21A. Kind &amp; Status Plug. Bond

Blanket

21B. Drilling Contractor

L&amp;M

22. Approx. Date Work will start

ASAP

23.

## PROPOSED CASING AND CEMENT PROGRAM

SIZE OF HOLE	SIZE OF CASING	WEIGHT PER FOOT	SETTING DEPTH	SACKS OF CEMENT	EST. TOP
12 1/2"	8 5/8"	24# J-55	400'	300 sx circ	
7 7/8"	5 1/2"	14# J-55	TD	200 sx/tie back	to base of salt

We propose to drill and test the Queen and intermediate formations. Approximately 400' of surface casing will be set and cement circulated to shut off gravel and caving. If needed (lost circulation) 7" intermediate casing will be run to 1900' and cemented with enough cement calculated to tie back into the surface casing. If commercial, production casing will be run and cemented with adequate cover, perforated and stimulated as needed.

MUD PROGRAM: FW 400', 10# Brine to TD. Mud up w/SW gel to log. LCM if needed.

BOP PROGRAM: BOP's will be installed after setting the 8 5/8" casing and tested daily.

Permit Expires 6 Months From Approval  
Date Unless Drilling Underway.

ABOVE SPACE DESCRIBE PROPOSED PROGRAM; IF PROPOSAL IS TO DEEPEN OR PLUG BACK, GIVE DATA ON PRESENT PRODUCTIVE ZONE AND PROPOSED NEW PRODUCTIVE ZONE. GIVE BLOWOUT PREVENTER PROGRAM, IF ANY.

I hereby certify that the information above is true and complete to the best of my knowledge and belief.

Signed Elisario Rodriguez Title Regulatory Agent Date 12/13/84

(This space for State Use)  
Jerry Sexton

ORIGINAL SIGNED BY JERRY SEXTON

APPROVED BY DISTRICT 1 SUPERVISOR

CONDITIONS OF APPROVAL, IF ANY:

DEC 13 1984

RECEIVED

DEC 13 1984

U.S. DEPT.  
HOMES OFFICE

NEW MEXICO OIL CONSERVATION COMMISSION  
WELL LOCATION AND ACREAGE DEDICATION PLAT

Form C-102  
Supersedes C-128  
Effective 1-1-65

All distances must be from the outer boundaries of the Section.

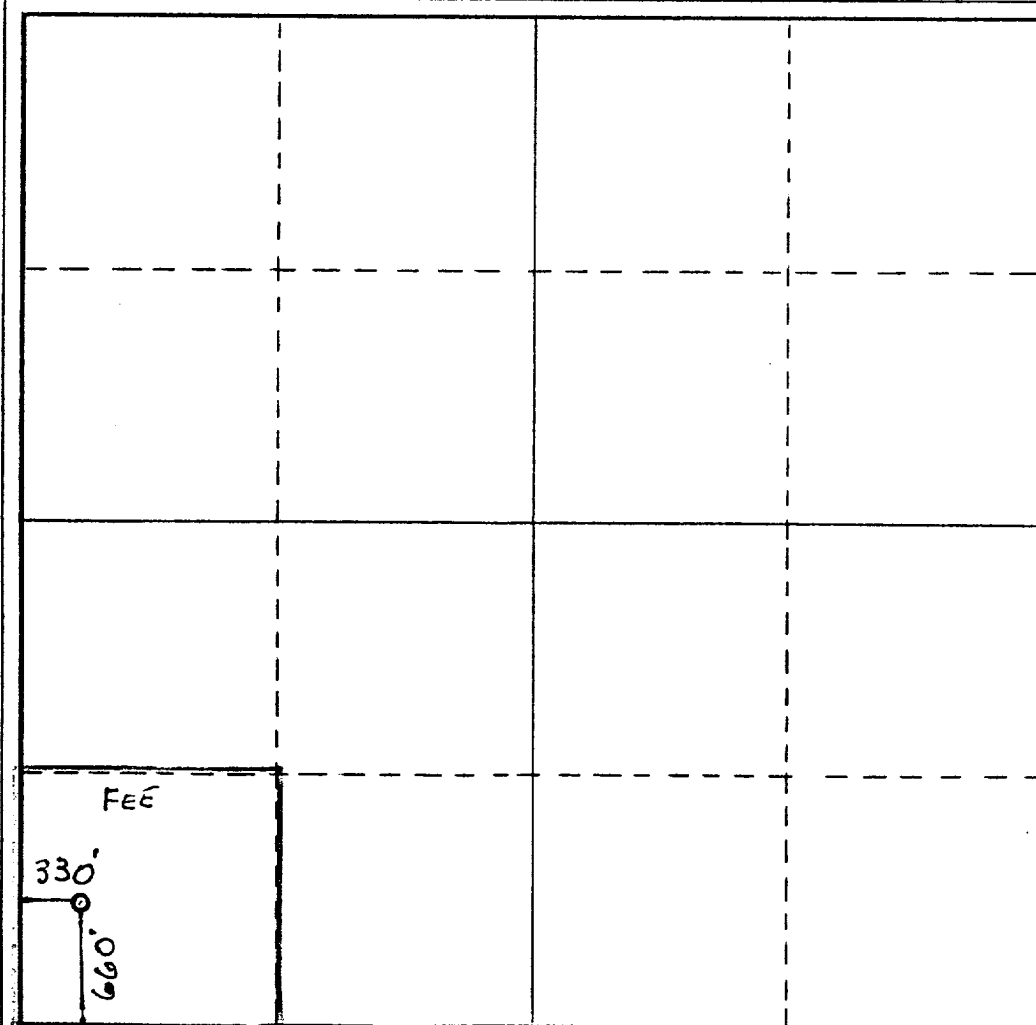
Operator Yates Drilling Company			Lease Graham		Well No. 1
Unit Letter M	Section 23	Township 12 South	Range 31 East	County Chaves	
Actual Footage Location of Well: 660 feet from the South line and 330 feet from the West line					
Ground Level Elev. 4422	Producing Formation Queen		Pool SE Chaves Queen		Dedicated Acreage: 40 Acres

1. Outline the acreage dedicated to the subject well by colored pencil or hachure marks on the plat below.
2. If more than one lease is dedicated to the well, outline each and identify the ownership thereof (both as to working interest and royalty).
3. If more than one lease of different ownership is dedicated to the well, have the interests of all owners been consolidated by communitization, unitization, force-pooling, etc?

☐ Yes ☐ No If answer is "yes," type of consolidation \_\_\_\_\_

If answer is "no," list the owners and tract descriptions which have actually been consolidated. (Use reverse side of this form if necessary.) \_\_\_\_\_

No allowable will be assigned to the well until all interests have been consolidated (by communitization, unitization, forced-pooling, or otherwise) or until a non-standard unit, eliminating such interests, has been approved by the Commission.



CERTIFICATION

I hereby certify that the information contained herein is true and complete to the best of my knowledge and belief.

*Gliserio Rodriguez*  
Name

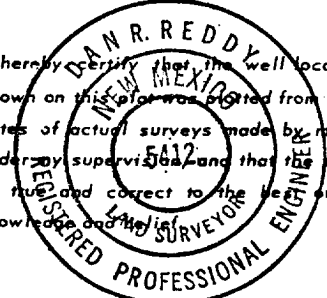
GLISERIO RODRIGUEZ  
Position

REG. AGT.  
Company

YATES DRILLING CO.  
Date

12-13-84

I hereby certify that the well location shown on this plat was plotted from field notes of actual surveys made by me or under my supervision and that the same is true and correct to the best of my knowledge and belief.



Date Surveyed  
December 12, 1984

Registered Professional Engineer  
and/or Land Surveyor

*Dan R. Reddy*

Certificate No.  
NM PE&LS NO. 5412



RECEIVED

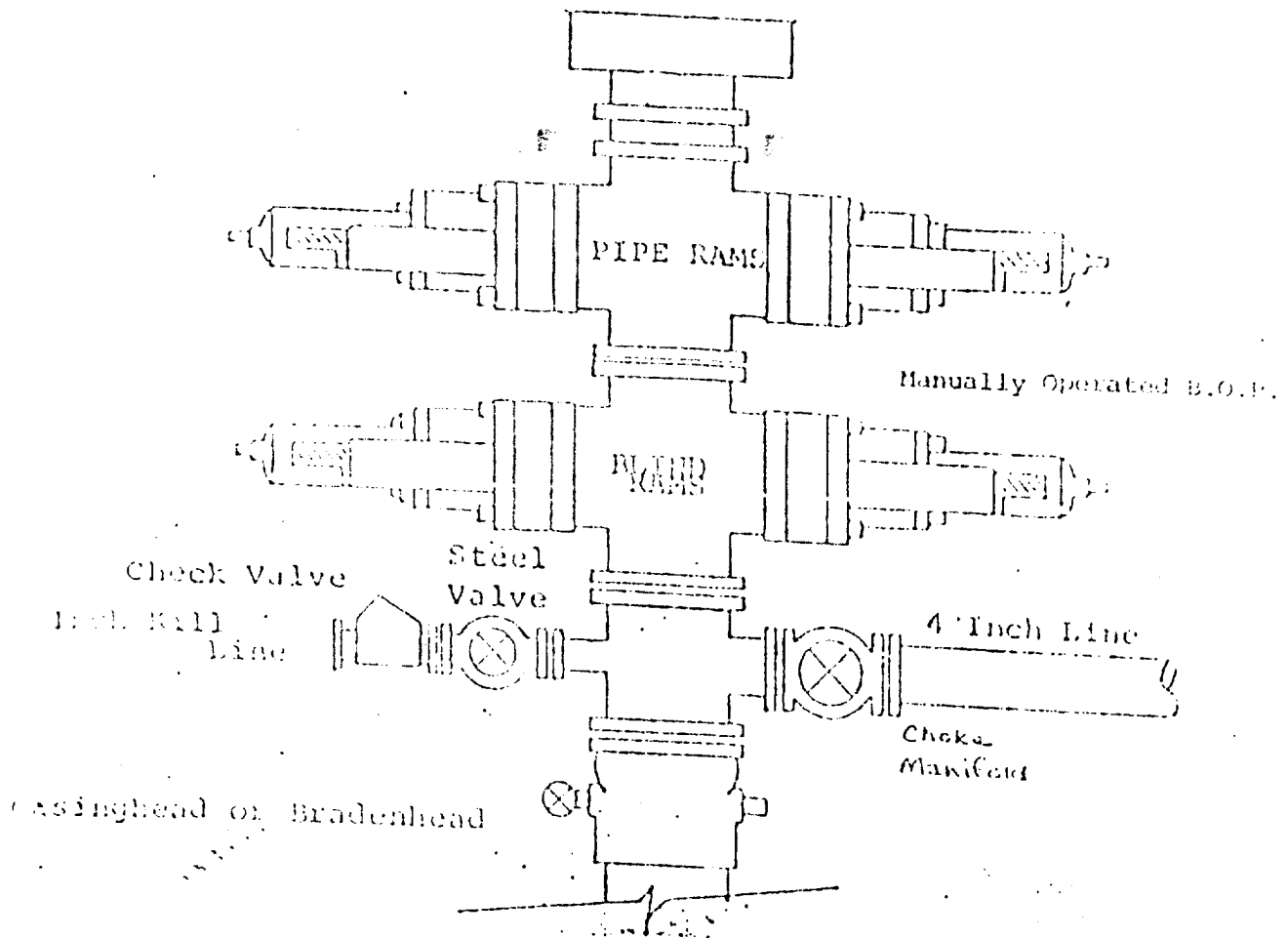
DEC 13 1984

U.S. DEPT.  
HOLDS OFFICE

# EXHIBIT B

## BOP DIAGRAM

RATED 3000<sup>psi</sup>



RECEIVED

DEC 13 1984

U.S. CUSTOMS AND BORDER PROTECTION  
HONOLULU OFFICE

6819.1  
17