

**NEW MEXICO OIL CONSERVATION COMMISSION
WELL LOCATION AND ACREAGE DEDICATION PLAT**

Form C-128
Supersedes C-128
Effective 1-1-65

All distances must be from the outer boundaries of the Section.

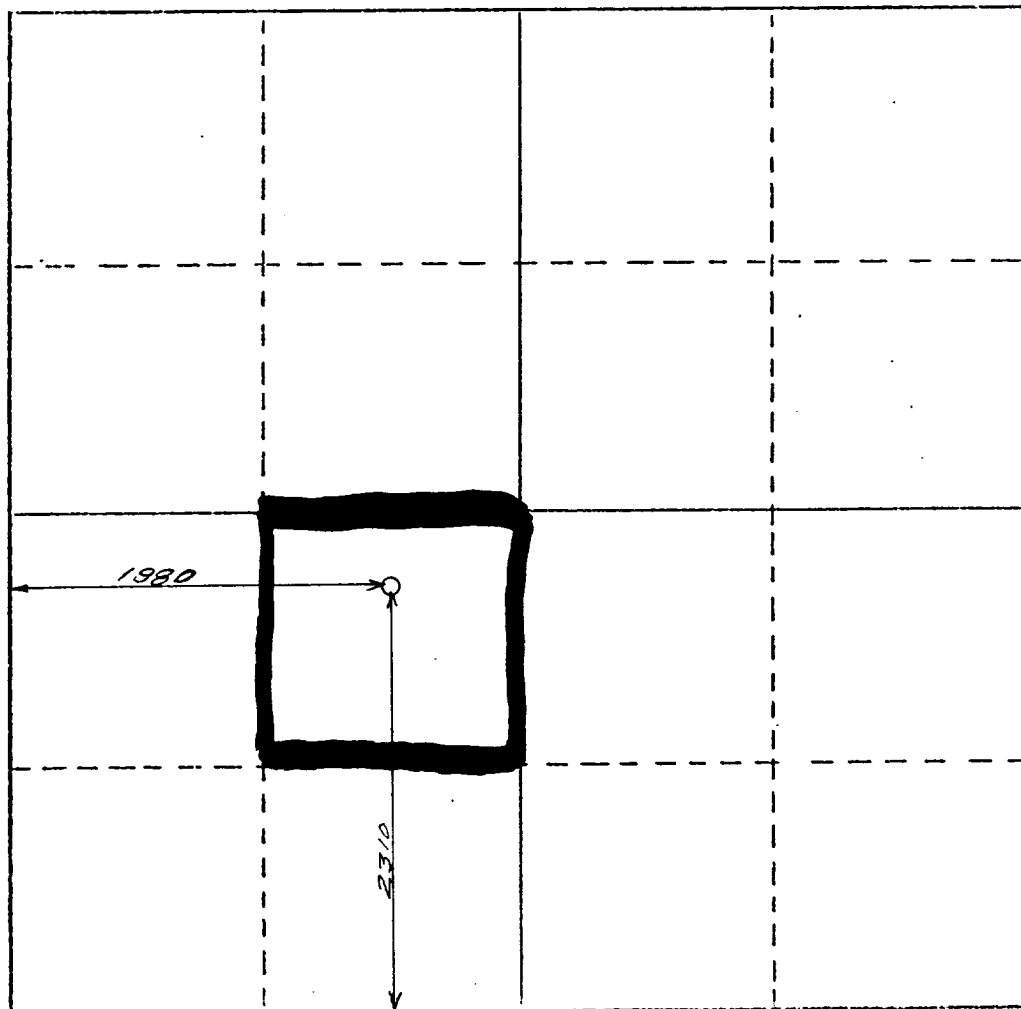
Operator Petroleum Exploration			Lease Siete Federal		Well No. 6
Unit Letter K	Section 17	Township 8 South	Range 31 East	County Chaves	
Actual Footage Location of Well:					
2310 feet from the South line and		1980 feet from the West line			
Ground Level Elev. 4193	Producing Formation San Andres	Pool Siete-San Andres	Dedicated Acreage 40		

1. Outline the acreage dedicated to the subject well by colored pencil or hatchure marks on the plat below.
2. If more than one lease is dedicated to the well, outline each and identify the ownership thereof (both as to working interest and royalty).
3. If more than one lease of different ownership is dedicated to the well, have the interests of all owners been consolidated by communitization, unitization, force-pooling, etc?

☐ Yes ☐ No If answer is "yes," type of consolidation _____

If answer is "no," list the owners and tract descriptions which have actually been consolidated. (Use reverse side of this form if necessary.) _____

No allowable will be assigned to the well until all interests have been consolidated (by communitization, unitization, forced-pooling, or otherwise) or until a non-standard unit, eliminating such interests, has been approved by the Commission.



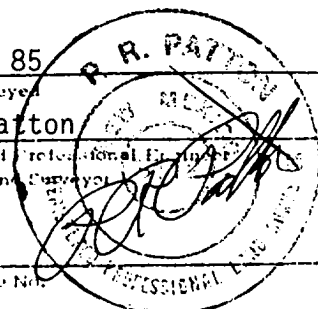
CERTIFICATION

I hereby certify that the information contained herein is true and complete to the best of my knowledge and belief.

Wesley Bogdan
 Name
Wesley Bogdan
 Position
Secretary/Treasurer
 Company
Petroleum Exploration Co., Inc.
 Date
April 3, 1985

I hereby certify that the well location shown on this plat was plotted from field notes of actual surveys made by me or under my supervision, and that the same is true and correct to the best of my knowledge and belief.

2 April 85
 Date Surveyed
P.R. Patton
 Registered Professional Engineer
 and/or Land Surveyor
8112
 Certificate No.



RECEIVED

APR 18 1985

HOUSE OFFICE