

NEW MEXICO OIL CONSERVATION COMMISSION
WELL LOCATION AND ACREAGE DEDICATION AT

Form C-102
Superseded C-128
Effective 1-1-65

All distances must be from the outer boundaries of the Section.

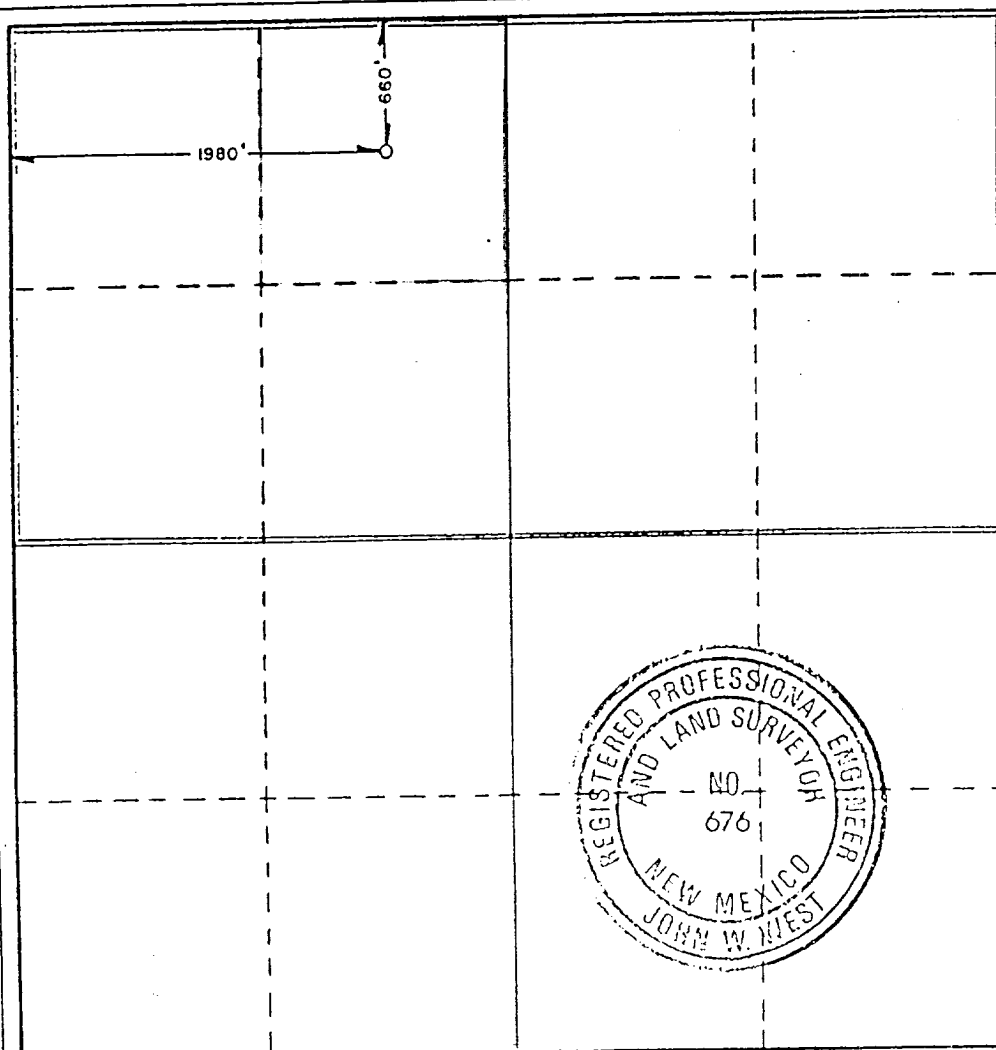
Operator E. P. OPERATING COMPANY		Lease STATE "24"		Well No. 1
Unit Letter C	Section 24	Township 12 SOUTH	Range 31 EAST	County CHAVES
Actual Footage Location of Well: 660 feet from the NORTH line and 1980 feet from the WEST line				
Ground Level Elev. 4114.7'	Producing Formation Cisco	Pool Undesignated	Dedicated Acreage: 40 Acres	

1. Outline the acreage dedicated to the subject well by colored pencil or hatchure marks on the plat below.
2. If more than one lease is dedicated to the well, outline each and identify the ownership thereof (both as to working interest and royalty).
3. If more than one lease of different ownership is dedicated to the well, have the interests of all owners been consolidated by communitization, unitization, force-pooling, etc?

☐ Yes ☐ No If answer is "yes," type of consolidation _____

If answer is "no," list the owners and tract descriptions which have actually been consolidated. (Use reverse side of this form if necessary.) _____

No allowable will be assigned to the well until all interests have been consolidated (by communitization, unitization, forced-pooling, or otherwise) or until a non-standard unit, eliminating such interests, has been approved by the Commission.



CERTIFICATION

I hereby certify that the information contained herein is true and complete to the best of my knowledge and belief.

C. H. Peeples

Name
C. H. Peeples
Position
Regional Drilling Manager
Company
EP Operating Company
Date
March 6, 1986

I hereby certify that the well location shown on this plat was plotted from field notes of actual surveys made by me or under my supervision, and that the same is true and correct to the best of my knowledge and belief.

Date Surveyed
MARCH 3, 1986
Registered Professional Engineer
and/or Land Surveyor

John W. West

Certificate No. JOHN W. WEST, 676
RONALD J. EIDSON, 3239

RECEIVED

SEP 23 1991

U.S. DEPARTMENT OF
ENERGY

U.S. DEPARTMENT OF
ENERGY