

NEW MEXICO OIL CONSERVATION COMMISSION
WELL LOCATION AND ACREAGE DEDICATION PLAT

Form O-102
Supersedes O-128
Effective 10-65

All distances must be from the outer boundaries of the Section

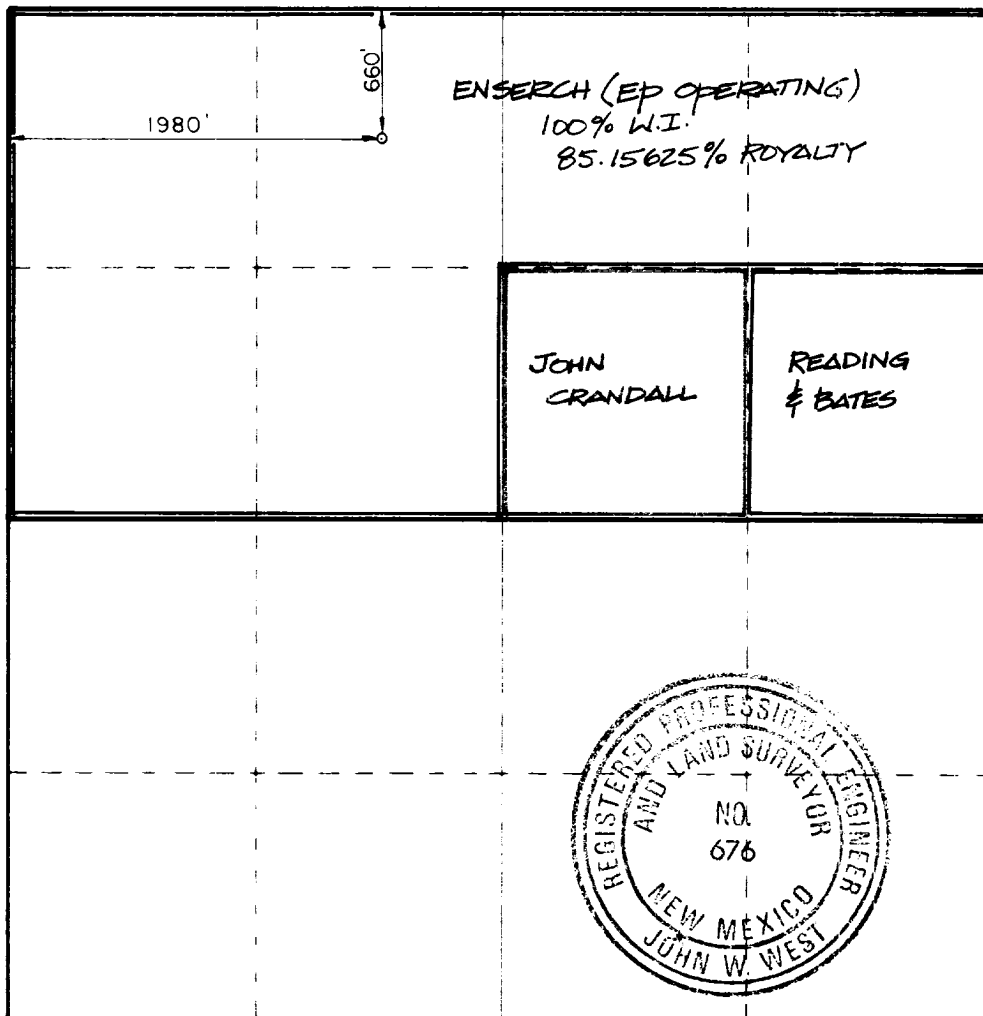
Operator E.P. Operating Co.		Lease State 24		Well No. 1
Section 24	Township 12-S	Range 31-E	County Chaves	
Actual Surface Location of Well: 1980 feet from the West line and 660 feet from the North line				
Ground Level Elev. 4114.7	Producing Formation Morrow	Pool Caprock Morrow, West (Gas)	Estimated Acreage 320	

- Outline the acreage dedicated to the subject well by colored pencil or hatchure marks on the plat below.
- If more than one lease is dedicated to the well, outline each and identify the ownership thereof (both as to working interest and royalty).
- If more than one lease of different ownership is dedicated to the well, have the interests of all owners been consolidated by communitization, unitization, force-pooling, etc?

☒ Yes ☐ No If answer is "yes," type of consolidation communitization

If answer is "no," list the owners and tract descriptions which have actually been consolidated. (Use reverse side of this form if necessary.) _____

No allowable will be assigned to the well until all interests have been consolidated (by communitization, unitization, forced-pooling, or otherwise) or until a non-standard unit, eliminating such interests, has been approved by the Commission.



CERTIFICATION

I hereby certify that the information contained herein is true and complete to the best of my knowledge and belief

Jack L. Sledge
Jack L. Sledge

Position
Regional Drilling Manager

Company
EP Operating Company

Date
August 17, 1987

I hereby certify that the well location shown on this plat was plotted from field notes of actual surveys made by me or under my supervision, and that the same is true and correct to the best of my knowledge and belief

Date Surveyed
July 31, 1987

Registered Professional Engineer and/or Land Surveyor

John W. West

Certificate No. JOHN W. WEST, 676
RONALD J. EIDSON, 3239