

30-005-21079

NO. OF COPIES RECEIVED		
DISTRIBUTION		
SANTA FE		
FILE		
U.S.G.S.		
LAND OFFICE		
OPERATOR		

NEW MEXICO OIL CONSERVATION COMMISSION

Form C-101  
Revised 1-1-65

5A. Indicate Type of Lease  
STATE  FEE

5. State Oil & Gas Lease No.

APPLICATION FOR PERMIT TO DRILL, DEEPEN, OR PLUG BACK

1a. Type of Work  
b. Type of Well DRILL  DEEPEN  PLUG BACK   
OIL WELL  GAS WELL  OTHER  SINGLE ZONE  MULTIPLE ZONE

2. Name of Operator  
Robert N. Enfield

3. Address of Operator  
P.O. Box 2431, Santa Fe, NM 87504-2431

4. Location of Well UNIT LETTER K LOCATED 1650 FEET FROM THE West LINE  
AND 2310 FEET FROM THE South LINE OF SEC. 29 TWP. 7 S RCP. 31E NMDM

19. Proposed Depth 8,800'  
19A. Formation Devonian  
20. Rotary or C.T. Rotary

21. Elevations (Show whether DF, RT, etc.)  
21A. Kind & Status Plug Bond Single well bond  
21B. Drilling Contractor  
22. Approx. Date Work will start 10-1-88-

7. Unit Agreement Name

8. Farm or Lease Name  
Sabine

9. Well No.  
1

10. Field and Pool, or Wildcat  
Lone Wolf Devonian

12. County  
Chaves

PROPOSED CASING AND CEMENT PROGRAM

SIZE OF HOLE	SIZE OF CASING	WEIGHT PER FOOT	SETTING DEPTH	SACKS OF CEMENT	EST. TOP
17-1/2"	13-3/8"	54.50	450'	400	Circ
12-1/4"	8-5/8"	24.32	3500'	1450	Circ
7-7/8"	4-1/2"	11.6	8800'	400	6500'

See attachment for pressure testing and BOP program

No dwelling within one mile of proposed location

Gas is not dedicated

IN ABOVE SPACE DESCRIBE PROPOSED PROGRAM; IF PROPOSAL IS TO DEEPEN OR PLUG BACK, GIVE DATA ON PRESENT PRODUCTIVE ZONE AND PROPOSED NEW PRODUCTIVE ZONE. GIVE BLOWOUT PREVENTER PROGRAM, IF ANY.

I hereby certify that the information above is true and complete to the best of my knowledge and belief.

Signed Paul Kautz Title Operator Date 9/8/88  
 (This space for State Use) **Orig. Signed by Paul Kautz Geologist**

APPROVED BY \_\_\_\_\_ TITLE \_\_\_\_\_ DATE OCT 03 1988

CONDITIONS OF APPROVAL, IF ANY:

R-8749 NSL

Permit Expires 6 Months From Approval Date Unless Drilling Underway.

ATTACHMENT TO FORM C-101  
NEW MEXICO OIL CONSERVATION COMMISSION

ROBERT H. ENFIELD

Sabine No. 1  
Chaves County, New Mexico

**BOP EQUIPMENT AND CASING TESTING**

**SURFACE CASING:** 13-3/8 " O. D.

BOP: One 13-3/8", 3000 psig Hydrill type preventor or a double ram type

Testing: Pressure test casing, well head, etc. with 1000 psig for 30 " prior to drilling out;  
50 psig drop acceptable.

**INTERMEDIATE CASING:** 8-5/8 " O. D.

BOP: One 11", 3000 psig Hydrill  
One 11", 3000 psig double ram type

Testing: Pressure test casing, well head, etc. with 1500 psig for 30 " prior to drilling out;  
50 psig acceptable.

Hydraulic test of BOP, choke manifold, etc. to rated pressure during first trip  
out from under casing but in any event, prior to drilling into Abo formation  
estimated to be at 6,500' KB.

**RECEIVED**

**SEP 30 1998**

**OCD  
HOBBS OFFICE**

NEW MEXICO OIL CONSERVATION COMMISSION  
 WELL LOCATION AND ACREAGE DEDICATION PLAT

Form C-102  
 Supersedes C-128  
 Effective 1-1-65

All distances must be from the outer boundaries of the Section

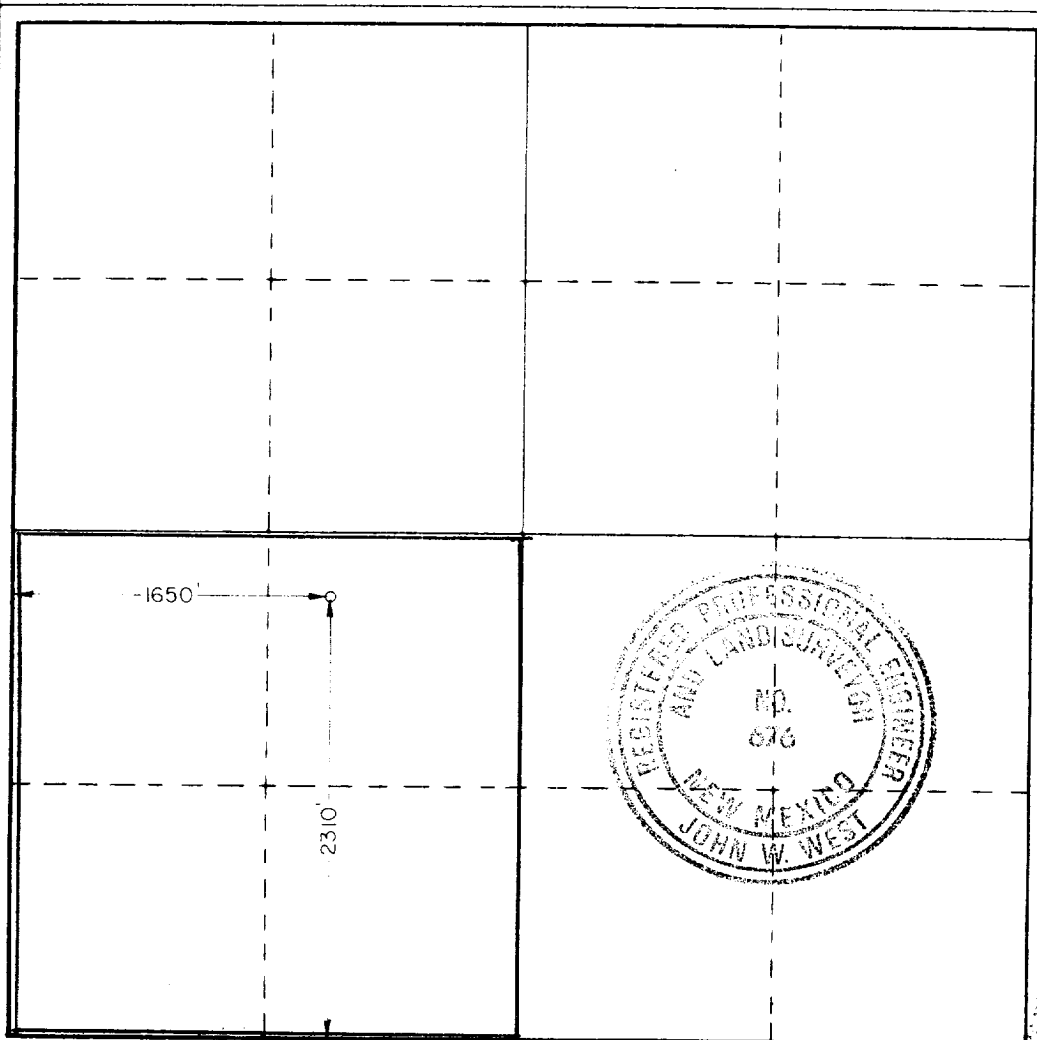
Operator Robert N. Enfield		Lease Sabine			Well No. 1
Unit Letter K	Section 29	Township 7 South	Range 31 East	County Chaves	
Actual Footage Location of Well: 2310 feet from the south line and 1650 feet from the west line					
Ground Level Elev. 4297.0	Producing Formation Devonian		Pool Lone Wolf Devonian	Dedicated Acreage: 160 Acres	

1. Outline the acreage dedicated to the subject well by colored pencil or hachure marks on the plat below.
2. If more than one lease is dedicated to the well, outline each and identify the ownership thereof (both as to working interest and royalty).
3. If more than one lease of different ownership is dedicated to the well, have the interests of all owners been consolidated by communitization, unitization, force-pooling, etc?

Yes  No If answer is "yes," type of consolidation \_\_\_\_\_

If answer is "no," list the owners and tract descriptions which have actually been consolidated. (Use reverse side of this form if necessary.) \_\_\_\_\_

No allowable will be assigned to the well until all interests have been consolidated (by communitization, unitization, forced-pooling, or otherwise) or until a non-standard unit, eliminating such interests, has been approved by the Commission.



CERTIFICATION

I hereby certify that the information contained herein is true and complete to the best of my knowledge and belief.

*Robert N. Enfield*  
 Name

Robert N. Enfield

Position

Operator

Company

Same

Date

9/22/88

I hereby certify that the well location shown on this plat was plotted from field notes of actual surveys made by me or under my supervision, and that the same is true and correct to the best of my knowledge and belief.

Date Surveyed

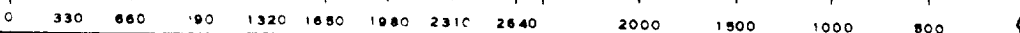
September 20, 1988

Registered Professional Engineer and/or Land Surveyor

*Ronald J. Eidson*

Certificate No. JOHN W. WEST, 676  
 RONALD J. EIDSON, 3239

96560



88-91-218204  
ELF

RECEIVED  
SEP 30 1988  
OCD  
HOBBS OFFICE