

Submit to Appropriate
District Office
State Lease - 6 copies
Fee Lease - 5 copies

State of New Mexico
Energy, Minerals and Natural Resources Department

Form C-101
Revised 1-1-89

OIL CONSERVATION DIVISION

DISTRICT I
P.O. Box 1980, Hobbs, NM 88240

DISTRICT II
P.O. Drawer DD, Artesia, NM 88210

DISTRICT III
1000 Rio Brazos Rd., Aztec, NM 87410

P.O. Box 2088
Santa Fe, New Mexico 87504-2088

API NO. (assigned by OCD on New Wells)

30-005-21085

5. Indicate Type of Lease

STATE ☐

FEE ☒

6. State Oil & Gas Lease No.

APPLICATION FOR PERMIT TO DRILL, DEEPEN, OR PLUG BACK

1a. Type of Work:

DRILL ☒

RE-ENTER ☐

DEEPEN ☐

PLUG BACK ☐

b. Type of Well:

OIL
WELL ☒

GAS
WELL ☐

OTHER ☐

SINGLE
ZONE ☐

MULTIPLE
ZONE ☐

7. Lease Name or Unit Agreement Name

Flying "WV"

8. Well No.

1

9. Pool name or Wildcat

Undes. Tobac Penn

2. Name of Operator

Yates Petroleum Corporation

3. Address of Operator

105 South Fourth Street, Artesia, NM 88210

4. Well Location

Unit Letter A : 660 Feet From The North Line and 660 Feet From The East Line

Section 34

Township 8S

Range 33E

NMPM

Chaves

County

10. Proposed Depth
9500'

11. Formation
Bough C

12. Rotary or C.T.
Rotary

13. Elevations (Show whether DF, RT, GR, etc.)

4353 GL.

14. Kind & Status Plug. Bond

Blanket

15. Drilling Contractor

Undesignated

16. Approx. Date Work will start

ASAP

17.

PROPOSED CASING AND CEMENT PROGRAM

SIZE OF HOLE	SIZE OF CASING	WEIGHT PER FOOT	SETTING DEPTH	SACKS OF CEMENT	EST. TOP
17-3/4"	13-3/8"	48# H-40	400'	400 sx	Circ.
12-1/4"	8-5/8"	24# K-55+S-80	4000'	600 sx	Circ.
-	-	28# S-80	-	-	-
7-7/8"	5-1/2"	15.5+17# K-55, N-80	9500'	as needed	-

We propose to drill and test the Bough "C" and intermediate formations. Approximately 400' of surface casing will be set and cement circulated to shut off gravel and cavings. Intermediate casing will be set to approximately 3900' and cement circulated back to surface. If commercial, production casing will be run and cemented with adequate cover perforated and stimulated as needed.

MUD PROGRAM: FW gel/LCM surface to 400', cut brine to 4000', SW gel/starch to TD.

BOP PROGRAM: BOP's will be installed at the offset and tested daily.

IN ABOVE SPACE DESCRIBE PROPOSED PROGRAM: IF PROPOSAL IS TO DEEPEN OR PLUG BACK, GIVE DATA ON PRESENT PRODUCTIVE ZONE AND PROPOSED NEW PRODUCTIVE ZONE. GIVE BLOWOUT PREVENTER PROGRAM, IF ANY.

I hereby certify that the information above is true and complete to the best of my knowledge and belief.

SIGNATURE

For Beard

TITLE Landman

DATE 6/23/89

TYPE OR PRINT NAME

TELEPHONE NO.

(This space for State Use)

ORIGINAL SIGNED BY JERRY SEXTON

DISTRICT I SUPERVISOR

APPROVED BY

TITLE

DATE

CONDITIONS OF APPROVAL, IF ANY:

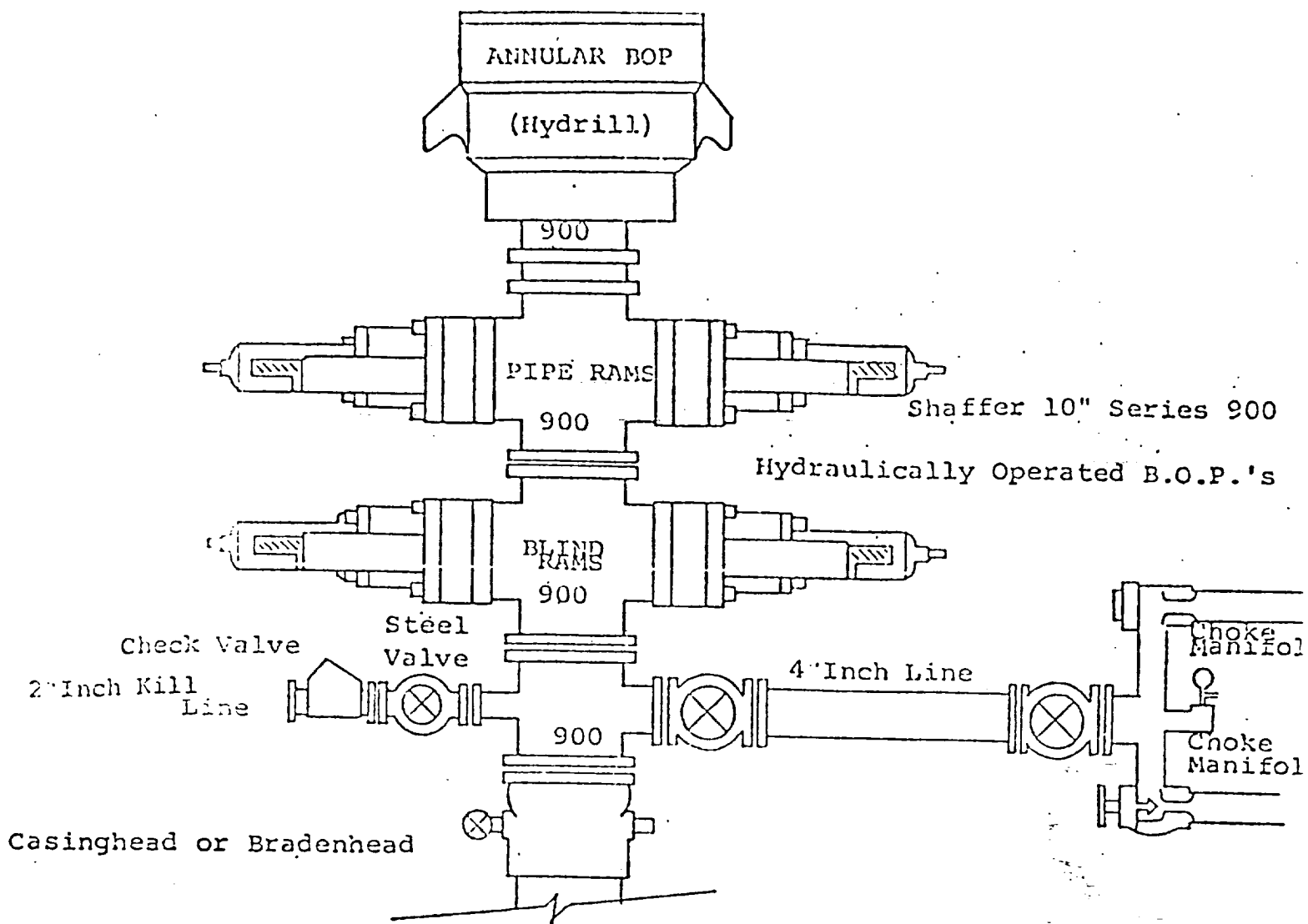
JUN 26 1989

Permit Expires 6 Months From Approval Date Unless Drilling Underway.

RECEIVED

JUN 26 1989

OCJ
HOBBS OFFICE



THE FOLLOWING CONSTITUTE MINIMUM BLOWOUT PREVENTER REQUIREMENTS

1. All preventers to be hydraulically operated with secondary manual control installed prior to drilling out from under casing.
2. Choke outlet to be a minimum of 2" diameter.
3. Kill line to be of all steel construction of 2" minimum diameter.
4. All connections from operating manifolds to preventers to be all steel. hole or tube a minimum of one inch in diameter.
5. The available closing pressure shall be at least 15% in excess of that required with sufficient volume to operate the B.O.P.'s.
6. All connections to and from preventer to have a pressure rating equivalent to that of the B.O.P.'s.
7. Inside blowout preventer to be available on rig floor.
8. Operating controls located a safe distance from the rig floor.
9. Hole must be kept filled on trips below intermediate casing.
10. D. P. float must be installed and used below zone of first gas intrusion

RECEIVED

JUN 28 1939

OCE
HOBBS OFFICE

Submit to Appropriate
District Office
State Lease - 4 copies
Fee Lease - 3 copies

State of New Mexico
Energy, Minerals and Natural Resources Department

Form C-102
Revised 1-1-89

OIL CONSERVATION DIVISION

P.O. Box 2088
Santa Fe, New Mexico 87504-2088

DISTRICT I
P.O. Box 1980, Hobbs, NM 88240

DISTRICT II
P.O. Drawer DD, Artesia, NM 88210

DISTRICT III
1000 Rio Brazos Rd., Aztec, NM 87410

WELL LOCATION AND ACREAGE DEDICATION PLAT

All Distances must be from the outer boundaries of the section

Operator YATES PETROLEUM CORPORATION			Lease FLYING "WV"		Well No. 1
Unit Letter A	Section 34	Township 8 South	Range 33 East	NMPM	County Chaves
Actual Footage Location of Well: 660 feet from the North line and 660 feet from the East line					
Ground level Elev. 4353.0	Producing Formation Bough C		Pool Undes. Tobac Penn		Dedicated Acreage: 80 Acres

1. Outline the acreage dedicated to the subject well by colored pencil or hatchure marks on the plat below.

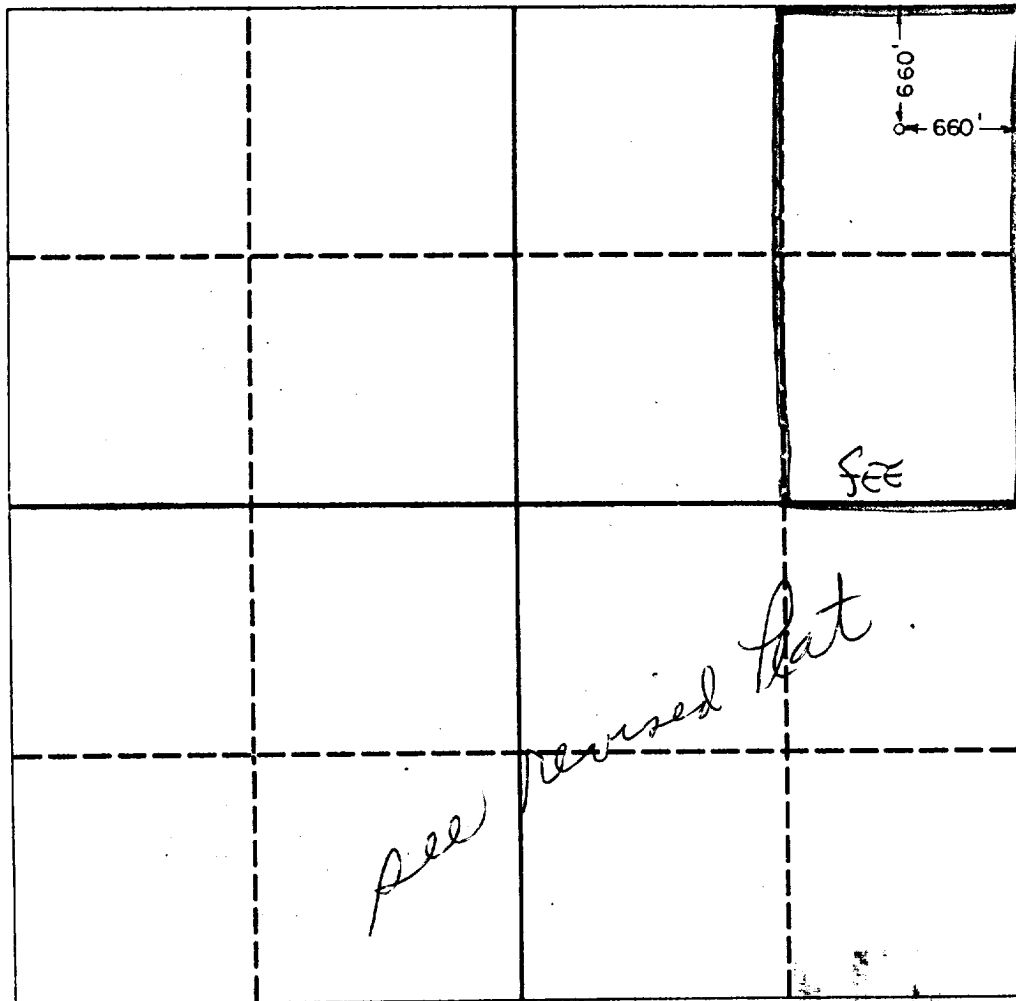
2. If more than one lease is dedicated to the well, outline each and identify the ownership thereof (both as to working interest and royalty).

3. If more than one lease of different ownership is dedicated to the well, have the interest of all owners been consolidated by communitization, unitization, force-pooling, etc.?

☐ Yes ☐ No If answer is "yes" type of consolidation _____

If answer is "no" list the owners and tract descriptions which have actually been consolidated. (Use reverse side of this form if necessary.)

No allowable will be assigned to the well until all interests have been consolidated (by communitization, unitization, forced-pooling, or otherwise) or until a non-standard unit, eliminating such interest, has been approved by the Division.



OPERATOR CERTIFICATION

I hereby certify that the information contained herein is true and complete to the best of my knowledge and belief.

Signature
Ken Beardemphl

Printed Name
Ken Beardemphl

Position
Landman

Company
Yates Petroleum Corporation

Date
6-22-89

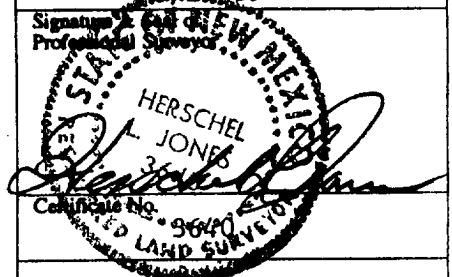
SURVEYOR CERTIFICATION

I hereby certify that the well location shown on this plat was plotted from field notes of actual surveys made by me or under my supervision, and that the same is true and correct to the best of my knowledge and belief.

Date Surveyed

6/19/89

Signature
Professional Surveyor



68-71-01 8271
ELF

RECEIVED

JUN 26 1989

OCD
HOBBS OFFICE