

Form 3160-3
(July 1989)
(formerly 9-331C)

N. M. OIL CONS. COMMISSION
P. O. BOX 1980
HOBBS, NEW MEXICO 88240

CONTACT REVIEWING
OFFICE FOR INR
OF COPIES REQUIRED
(Other instructions on
reverse side)

30-005-21096

BLM Roswell District
Modified Form No.
NMO60-3160-2

UNITED STATES
DEPARTMENT OF THE INTERIOR
BUREAU OF LAND MANAGEMENT

APPLICATION FOR PERMIT TO DRILL, DEEPEN, OR PLUG BACK

1a. TYPE OF WORK

DRILL ☒

DEEPEN ☐

PLUG BACK ☐

b. TYPE OF WELL

OIL WELL ☒

GAS WELL ☐

OTHER ☐

SINGLE ZONE ☐

MULTIPLE ZONE ☐

2. NAME OF OPERATOR

McClellan Oil Corporation

3a. Area Code & Phone No.

505/622-3200

3. ADDRESS OF OPERATOR

P. O. Drawer 730

Roswell, NM 88202

4. LOCATION OF WELL (Report location clearly and in accordance with any State requirements.)

At surface

1980' FSL & 1980' FEL

At proposed prod. zone

Same

14. DISTANCE IN MILES AND DIRECTION FROM NEAREST TOWN OR POST OFFICE*

30 miles east of Hagerman, NM

10. DISTANCE FROM PROPOSED*

LOCATION TO NEAREST
PROPERTY OR LEASE LINE, FT.
(Also to nearest drg. unit line, if any)

660'

16. NO. OF ACRES IN LEASE

2560

17. NO. OF ACRES ASSIGNED
TO THIS WELL

40

18. DISTANCE FROM PROPOSED LOCATION*

TO NEAREST WELL, DRILLING, COMPLETED,
OR APPLIED FOR, ON THIS LEASE, FT.

1476'

19. PROPOSED DEPTH

2650'

20. ROTARY OR CABLE TOOLS

Cable Tool Rig

21. ELEVATIONS (Show whether DF, RT, GR, etc.)

3905' GL

22. APPROX. DATE WORK WILL START*

December 1, 1990

23.

PROPOSED CASING AND CEMENTING PROGRAM

HOLE SIZE	CASING SIZE	WEIGHT/FOOT	GRADE	THREAD TYPE	SETTING DEPTH	QUANTITY OF CEMENT
12 1/4"	8 5/8"	24#	J-55	STC	700'	Circ. 550 sx
7 7/8"	4 1/2"	10.5#	J-55	LTC	2350'	150 sx "C"

MUD PROGRAM: Propose to drill to a depth of 2350' in order to test the Queen Sands. No mud program is planned since well is to be drilled with a cable tool rig. Will mud up if excessive water or gas pressures are encountered

BOP Program: Cable Tool Rig: A henderliter mechanical single control gate will be used and will have a minimum of 2,000 psi wp. See Exhibit "E".



IN ABOVE SPACE DESCRIBE PROPOSED PROGRAM: If proposal is to deepen or plug back, give data on present productive zone and proposed new productive zone. If proposal is to drill or deepen directionally, give pertinent data on subsurface locations and measured and true vertical depths. Give blowout preventer program, if any.

24.

SIGNED

[Signature]

Agent for:

TITLE McClellan Oil Corp.

Nov. 9, 1990

DATE

(This space for Federal or State office use)

PERMIT NO.

APPROVAL DATE

APPROVED BY

S/Homer Meyer, Acting

TITLE Area Manager

DATE

DEC 4 1990

CONDITIONS OF APPROVAL, IF ANY:

APPROVAL OF THIS APPLICATION DOES NOT WARRANT OR CERTIFY THAT THE APPLICANT HOLDS LEGAL OR EQUITABLE TITLE TO THOSE RIGHTS IN THE SUBJECT LEASE WHICH WOULD ENTITLE THE APPLICANT TO CONDUCE OPERATIONS THEREON. PLEASE BE ADVISED THAT THERE WILL BE NO EXCAVATION OF FEDERALLY OWNED MINERAL MATERIAL FOR CONSTRUCTION OF THE ACCESS ROAD OR PAD WITHOUT PAYMENT IN ADVANCE. See Instructions On Reverse Side. THIS IS U.S.C. Section 1001, making it a crime for any person knowingly and willfully to make to any department or agency of the

Submit to Appropriate
District Office
State Lease - 4 copies
Fee Lease - 3 copies

State of New Mexico
Energy, Minerals and Natural Resources Department

OIL CONSERVATION DIVISION

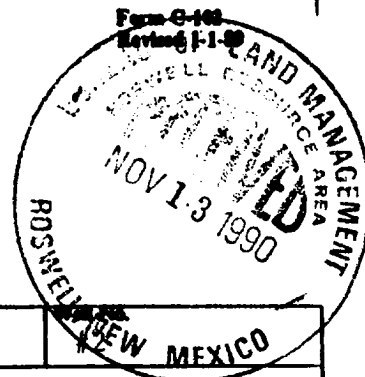
P.O. Box 2088
Santa Fe, New Mexico 87504-2088

DISTRICT I
P.O. Box 1980, Hobbs, NM 88240

DISTRICT II
P.O. Drawer DD, Aptos, NM 88210

DISTRICT III
1000 Rio Brazos Rd., Artes, NM 87410

WELL LOCATION AND ACREAGE DEDICATION PLAT
All Distances must be from the outer boundaries of the section



Operator McClellan Oil Corporation			Lease Occidental Federal		
Well Letter J	Section 22	Township 14S.	Range 30E.	County NM PM Chaves	
Actual Footage Location of Well: 1980 feet from the South line and 1980 feet from the East line					
Ground level Elev. 3905	Producing Formation Queen		Pool West Ranch Queen Assoc. Wildcat		Dedicated Acreage: 40 Acres

1. Outline the acreage dedicated to the subject well by colored pencil or hatchure marks on the plat below.

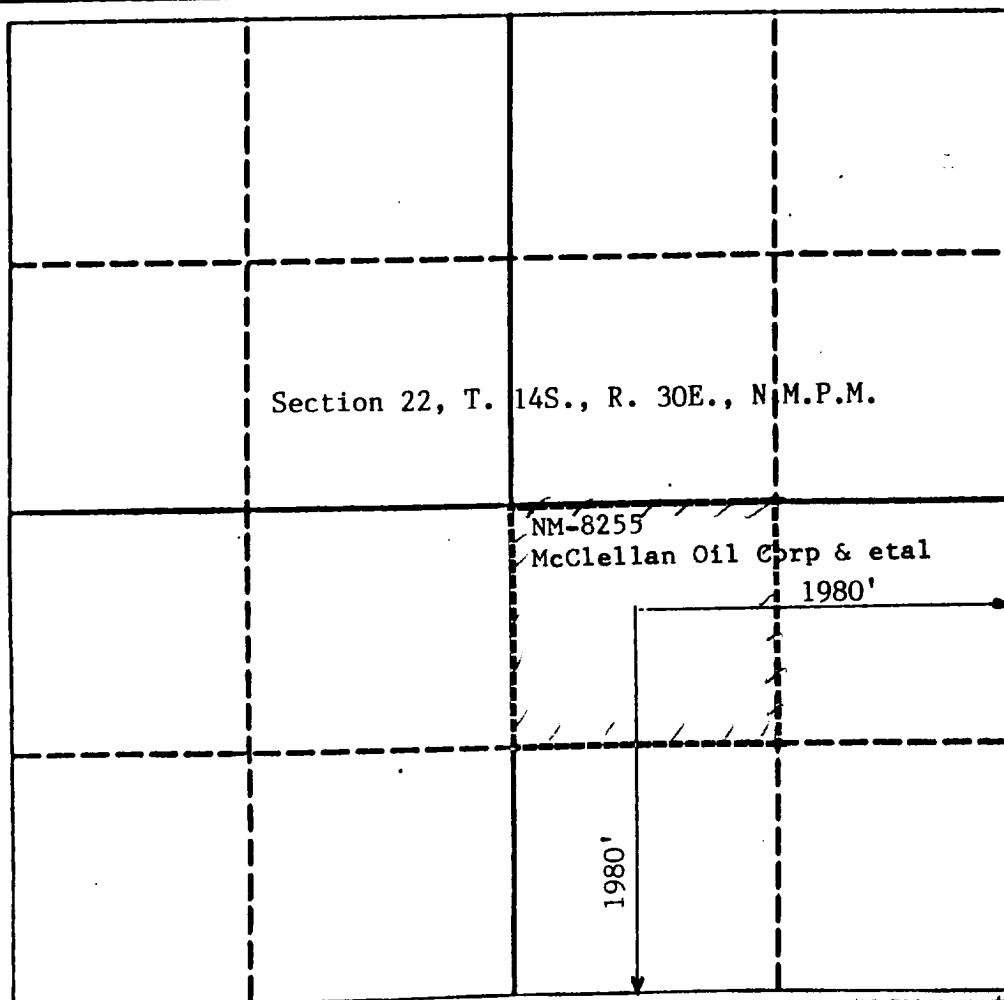
2. If more than one lease is dedicated to the well, outline each and identify the ownership thereof (both as to working interest and royalty).

3. If more than one lease of different ownership is dedicated to the well, have the interest of all owners been consolidated by communitization, unitization, forced-pooling, etc.?

☐ Yes ☐ No If answer is "yes" type of consolidation

If answer is "no" list the owners and trust descriptions which have actually been consolidated. (Use reverse side of this form if necessary).

No acreage will be assigned to the well until all interests have been consolidated (by communitization, unitization, forced-pooling, or otherwise) or until a non-standard unit, eliminating such interest, has been approved by the Division.



OPERATOR CERTIFICATION

I hereby certify that the information contained herein is true and complete to the best of my knowledge and belief.

Signature

Printed Name

George R. Smith

Position

Agent for:

Company

McClellan Oil Corp.

Date

November 12, 1990

SURVEYOR CERTIFICATION

I hereby certify that the well location shown on this plat was plotted from field notes of actual surveys made by me or under my supervision, and that the same is true and correct to the best of my knowledge and belief.

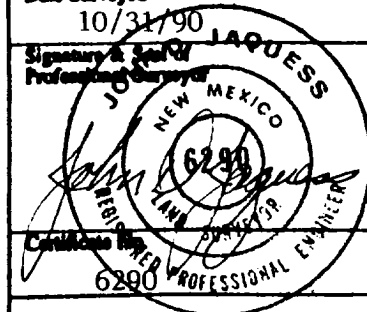
Date Surveyed

10/31/90

Signature & Seal of
Professional Surveyor

Certification No.

6290



APPLICATION FOR DRILLING

McCLELLAN OIL CORPORATION
Occidental Federal, Well No. 2
1980' FSL & 1980 FEL. Sec. 22-T14S-R30E
Chaves County, New Mexico
Lease No.: NM-8255
(Exploratory Well)



In conjunction with Form 3160-3, Application for Permit to Drill subject well, McClellan Oil Corporation submits the following items of pertinent information in accordance with BLM requirements:

1. The geologic surface formation is recent Permian with quaternary alluvium and other surficial deposits.
2. The estimated tops of geologic markers are as follows:

Rustler	615'
Salado	760'
Yates	1538'
7-Rivers	2102'
Queen	2283'
T.D.	2350'
3. The estimated depths at which water, oil or gas formations are anticipated to be encountered:

Water: Random fresh water sands from surface to - 300'+/-.

Oil: Possible in the Queen below 2283'.

Gas: None expected.
4. Proposed Casing Program: See Form 3160-3.
5. Proposed Control Equipment: See Form 3160-3 and Exhibit "E".
6. Mud Program: See Form 3160-3.
7. Auxiliary Equipment: Blowout Preventer, gas detector, Kelly cock, pit level monitor, flow sensors and stabbing valve.
8. Testing, Logging, and Coring Program:

Drill Stem Tests: None.

Logging: T.D. to surface casing: GR-CNL-LDT, and DLL.

Coring: None planned.
9. No abnormal pressures or temperatures are anticipated. In the event abnormal pressures are encountered the proposed mud program will be modified to increase the mud weight.
10. Anticipated starting date: December 1, 1990.
Anticipated completion of drilling operations: Approximately 30 days.



SHAFFER TOOL WORKS



PREVENTERS

SHAFFER MECHANICAL CONTROL GATES

(Patented)

PARTS FOR TYPE 45 SINGLE GATES

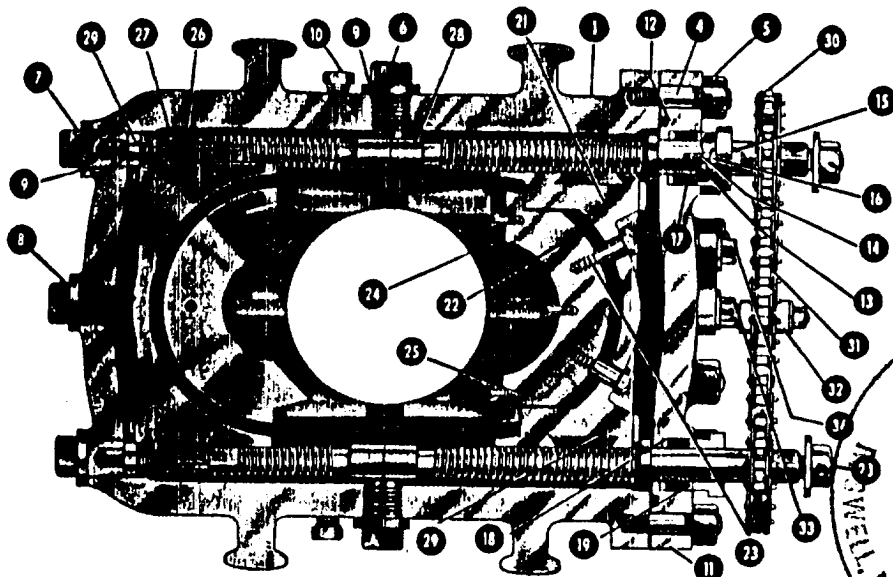


Fig. 84

Shaffer Type 45 Mechanical Single Control Gate—Top View

Part No.	No. Req'd.	NAME OF PART	Part No.	No. Req'd.	NAME OF PART	Part No.	No. Req'd.	NAME OF PART
1	1	Body	15	4	Stuffing Box Gland Stud Nut	26	8	Ram Clip
2	Varies	Body Flange Stud (Not Shown)	16	4	Stuffing Box Gland Jam Nut	27	16	Ram Clip Cap Screw
3	Varies	Body Flange Stud Nut (Not Shown)	17	2 Sets	Stuffing Box Packing (Chevron)	28	2	Operating Screw with Nut
4	Varies	Body End Cover Stud	18	2	Stuffing Box Bronze Packing Ring — Bottom	29	2 R.H. & 2 L.H.	Bronze Half Nut
5	Varies	Body End Cover Stud Nut	10	2	Stuffing Box Bronze Packing Ring — Top	30	2	Sprocket
6	2	Side Plug	20	2	Flange (Not Shown)	31	1	Sprocket Chain (length varies)
7	2	End Bearing Plug	21	1 Set	Ram Block Holder	32	1	Sprocket Chain Tightener
8	1	End Center Plug	22	1 Set	Ram Block (Pipe or Complete Shut-Off)	33	1	Screw with Ratchet Washer for Chain Tightener
9	5	Copper Gasket for Side and End Plug	23	4	Ram Block Retracting Screw	34	1	Screw with Plain Washer for Chain Tightener
10	2	Washout Plug	24	1 Set	Ram Rubber (Pipe or Complete Shut-Off)	35	1	Sprocket Chain Guard (Not Shown)
11	1	End Cover	25	Varies	Ram Rubber Retaining Screw	36	2	Cap Screw with Washer for Chain Guard (Not Shown)
12	1	Hydraulic Packing for End Cover (Earlier Gates use Metal Gasket)						
13	2	Stuffing Box Gland						
14	4	Stuffing Box Gland Stud						

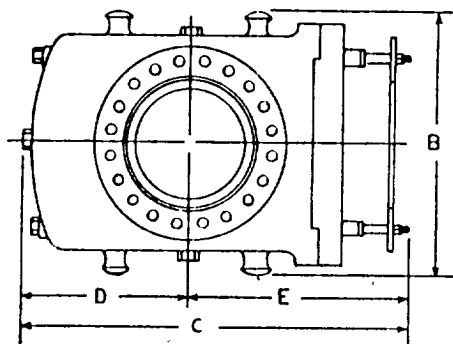


Fig. 85

Dimensional Plan—Shaffer Type 45 Mechanical Single Control Gate

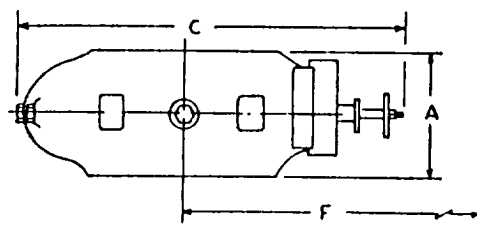


Fig. 86

Dimensional Elevation—Shaffer Type 45 Mechanical Single Control Gate

DIMENSIONAL AND ENGINEERING DATA ON SHAFFER TYPE 45 MECHANICAL SINGLE CONTROL GATES

Size	Max. Service Pressure Rating, psi	Test Pressure, psi	Vertical Bore	Approx. Weight, Pounds	Ram Size	A Height	B Width	C	D Center To	E Center To	F Max. Distance Needed To
6"	3,000	6,000	7 1/4"	1,500	C.S.O. Thru 5" O.D.	14"	27 1/2"				
8"	3,000	6,000	9"	2,050	C.S.O. Thru 7" O.D.	15 1/4"	29 1/2"				
10"	3,000	6,000	11"	2,580	C.S.O. Thru 8 3/4" O.D.	16 1/4"	32"				
12"	3,000	6,000	12 3/4"	3,345	C.S.O. Thru 10 1/4" O.D.	17 3/4"	33 1/2"				
16"	2,000	3,000	15 1/4"	4,290	C.S.O. Thru 13 3/4" O.D.	17"	37"				

EXHIBIT "E"
McCLELLAN OIL CORPORATION
Occidental Federal, Well No. 2
BOP Specifications