

APPLICATION FOR DRILLING

McCLELLAN OIL CORPORATION
Ross Federal, Well No. 1
2160' FSL & 2310' FWL, Sec. 34-T10S-R30E
Chaves County, New Mexico
Lease No.: NM-69175
(Exploratory Well)



In conjunction with Form 3160-3, Application for Permit to Drill subject well, McClellan Oil Corporation submits the following items of pertinent information in accordance with BLM requirements:

1. The geologic surface formation is recent Permian with quaternary alluvium and other surficial deposits.
2. The estimated tops of geologic markers are as follows:

Rustler	1000'
Yates	1625'
Queen	2315'
San Andres	2890'
T.D.	3800'
3. The estimated depths at which water, oil or gas formations are anticipated to be encountered:

Water: Random fresh water sands from surface to - 300'+/-.
Oil: Possible in the San Andres below 2890'.
Gas: None expected.
4. Proposed Casing Program: See Form 3160-3.
5. Proposed Control Equipment: See Form 3160-3 and Exhibit "E".
6. Mud Program: See Form 3160-3.
7. Auxiliary Equipment: Blowout Preventer, gas detector, Kelly cock.
8. Testing, Logging, and Coring Program:

Drill Stem Tests: None.
Logging: T.D. to surface casing: GR-CNL-LDT, and DLL.
Coring: None planned.
9. No abnormal pressures or temperatures are anticipated. In the event abnormal pressures are encountered the proposed mud program will be modified to increase the mud weight.
10. Anticipated starting date: June 15, 1991.
Anticipated completion of drilling operations: Approximately 30 days.

RECEIVED

JUN 21 1991

GOA
HOBBS OFFICE

DIVERTOR SYSTEM
2M System

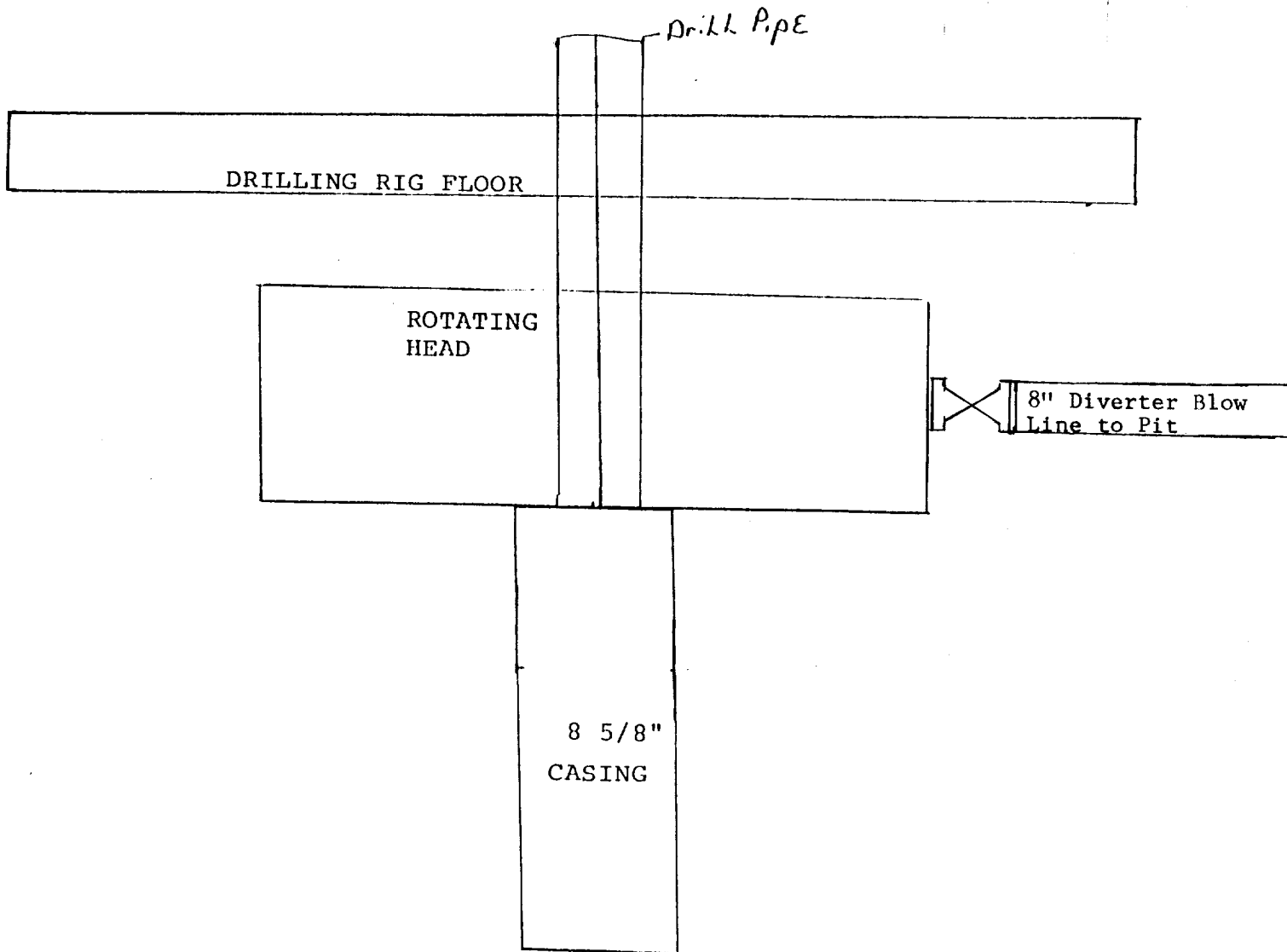


EXHIBIT "E"
McCLELLAN OIL CORPORATION
Ross Federal, Well No. 1
BOP Specifications

RECEIVED

JUN 21 1991

GOV
HOBBS OFFICE