

UNITED STATES
DEPARTMENT OF THE INTERIOR
BUREAU OF LAND MANAGEMENT
HOBBS, NEW MEXICO

N. M. C. (Other instructions on reverse side)
P.O. BOX 1980

5. LEASE DESIGNATION AND SERIAL NO.
88240
NM-31258
6. IF INDIAN, ALLOTTEE OR TRIBE NAME

7. UNIT AGREEMENT NAME

8. FARM OR LEASE NAME
G. Matlage Federal
9. WELL NO.
1
10. FIELD AND POOL, OR WILDCAT
Vest Ranch Queen assoc.
Wildcat
11. SEC., T., R., M., OR BLK.
AND SURVEY OR AREA
Sec. 33-14S-30E
12. COUNTY OR PARISH
Chaves
13. STATE
N.M.
17. NO. OF ACRES ASSIGNED
TO THIS WELL
40
20. ROTARY OR CABLE TOOLS
Rotary To 2100'
Cable Tool To 2200'
22. APPROX. DATE WORK WILL START*
Upon Approval

APPLICATION FOR PERMIT TO DRILL, DEEPEN, OR PLUG BACK

1a. TYPE OF WORK
DRILL ☒ DEEPEN ☐ PLUG BACK ☐
b. TYPE OF WELL
OIL WELL ☒ GAS WELL ☐ OTHER ☐ SINGLE ZONE ☒ MULTIPLE ZONE ☐
2. NAME OF OPERATOR
Ph. 505-623-2040
3. ADDRESS OF OPERATOR
COLLINS OIL & GAS CORPORATION
P.O. Box 2443
Roswell, New Mexico 88202
4. LOCATION OF WELL (Report location clearly and in accordance with any State requirements.)
At surface
2310' FSL, 2310' FWL, Sec. 33-14S-30E (UNIT K)
At proposed prod. zone Same (NESW)
14. DISTANCE IN MILES AND DIRECTION FROM NEAREST TOWN OR POST OFFICE*
25 miles east of Hagerman, New Mexico
10. DISTANCE FROM PROPOSED*
LOCATION TO NEAREST
PROPERTY OR LEASE LINE, FT.
(Also to nearest drilg. unit line, if any) 2310'
16. NO. OF ACRES IN LEASE
1040
17. NO. OF ACRES ASSIGNED
TO THIS WELL
40
18. DISTANCE FROM PROPOSED LOCATION*
TO NEAREST WELL, DRILLING, COMPLETED,
OR APPLIED FOR, ON THIS LEASE, FT. 2333'±
19. PROPOSED DEPTH
2200' Queen
20. ROTARY OR CABLE TOOLS
Rotary To 2100'
Cable Tool To 2200'
21. ELEVATIONS (Show whether DF, RT, GR, etc.)
3927' GL
22. APPROX. DATE WORK WILL START*
Upon Approval

PROPOSED CASING AND CEMENTING PROGRAM

SIZE OF HOLE	SIZE OF CASING	WEIGHT PER FOOT	SETTING DEPTH	QUANTITY OF CEMENT
12-1/4"	8-5/8"	24# K-55	500'±	Circulate Cement
7-7/8"	4-1/2"	9.5# K-55	2200'±	100 sx Cement

Propose to air drill to 2100'± using rotary. Finish drilling to 2200'± using cable tool rig to test Queen for down-dip oil.

A 1000 PSI drilling head will be used during drilling. A blooie line will divert cuttings to the reserve pit. See attached SUPPLEMENTAL DRILLING DATA.

4-1/2" casing will be set to TD and cemented to isolate all porosity zones. Will perforate favorable zones, run tubing and test to tank.

IN ABOVE SPACE DESCRIBE PROPOSED PROGRAM: If proposal is to deepen or plug back, give data on present productive zone and proposed new productive zone. If proposal is to drill or deepen directionally, give pertinent data on subsurface locations and measured and true vertical depths. Give blowout preventer program, if any.

24. SIGNED Jerry H. Long TITLE Permit Agent DATE December 9, 1991
(This space for Federal or State office use)
JERRY H. LONG
PERMIT NO. _____ APPROVAL DATE _____
APPROVED BY Homer S. Meyer TITLE Acting Area Manager DATE 12-26-91
CONDITIONS OF APPROVAL, IF ANY:

*See Instructions On Reverse Side

RECEIVED

DEC 9 1 47 PM '91

RECEIVED
ROUTED TO
ADVIS

DEC 24 1991

ADVIS

Submit to Appropriate
District Office
State Lease - 4 copies
Fee Lease - 3 copies

State of New Mexico
Energy, Minerals and Natural Resources Department

Form C-102
Revised 1-1-89

OIL CONSERVATION DIVISION

P.O. Box 2088
Santa Fe, New Mexico 87504-2088

DISTRICT I
P.O. Box 1980, Hobbs, NM 88240

DISTRICT II
P.O. Drawer DD, Artesia, NM 88210

DISTRICT III
1000 Rio Brazos Rd., Aztec, NM 87410

WELL LOCATION AND ACREAGE DEDICATION PLAT

All Distances must be from the outer boundaries of the section

Operator COLLINS OIL & GAS CORPORATION			Lease G. MATTLAGE FEDERAL		Well No. #1
Unit Letter K	Section 33	Township 14S.	Range 30E.	County NMPM	CHAVES
Actual Footage Location of Well: 2310 feet from the WEST line and 2310 feet from the SOUTH line					
Ground level Elev. 3927	Producing Formation Queen		Foot Vest Ranch Wildcat - Queen Oil assoc.		Dedicated Acreage: 40 Acres

1. Outline the acreage dedicated to the subject well by colored pencil or hatchure marks on the plat below.

2. If more than one lease is dedicated to the well, outline each and identify the ownership thereof (both as to working interest and royalty).

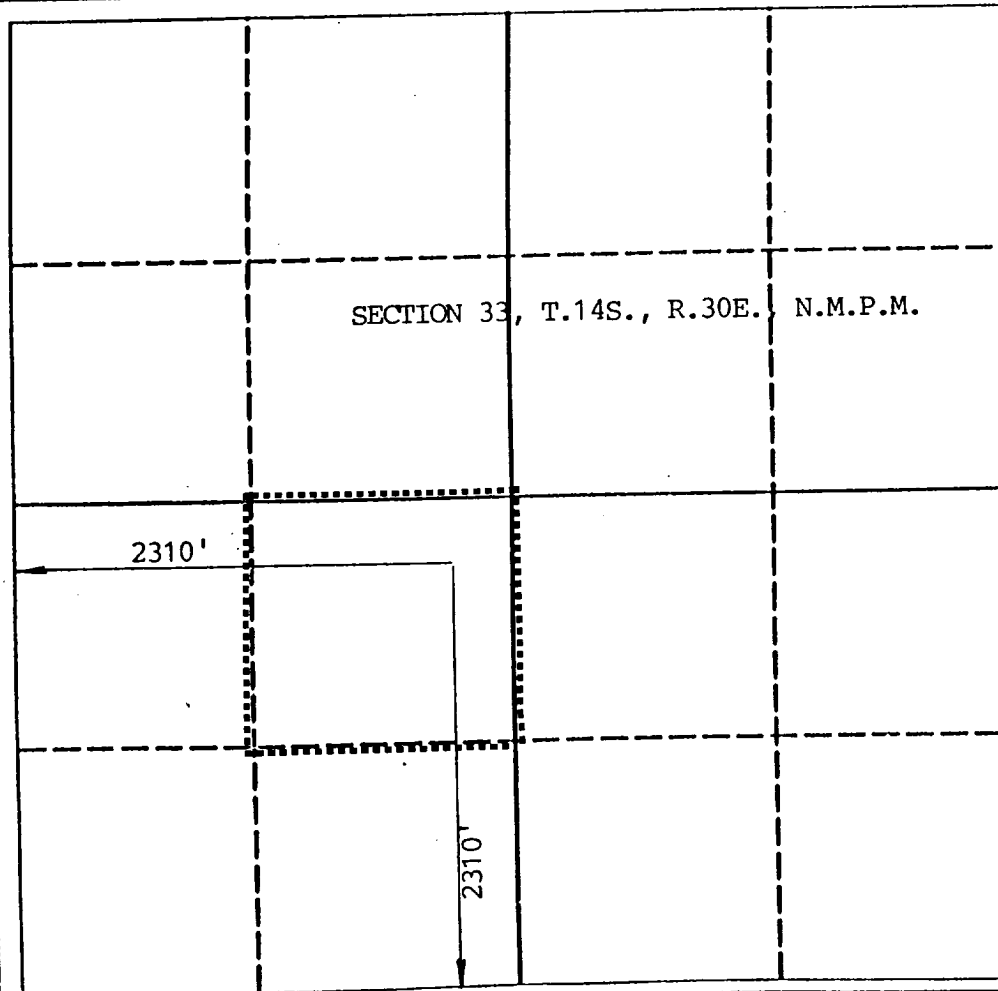
SINGLE LEASE

3. If more than one lease of different ownership is dedicated to the well, have the interest of all owners been consolidated by communization, unitization, force-pooling, etc.?

☐ Yes ☐ No If answer is "yes" type of consolidation

If answer is "no" list the owners and tract descriptions which have actually been consolidated. (Use reverse side of this form if necessary.)

No allowable will be assigned to the well until all interests have been consolidated (by communization, unitization, forced-pooling, or otherwise) or until a non-standard unit, eliminating such interest, has been approved by the Division.



OPERATOR CERTIFICATION

I hereby certify that the information contained herein is true and complete to the best of my knowledge and belief.

Signature

Printed Name

JERRY W. LONG

Position

Permit Agent

Company

COLLINS OIL & GAS CORP.

Date

December 9, 1991

SURVEYOR CERTIFICATION

I hereby certify that the well location shown on this plat was plotted from field notes of actual surveys made by me or under my supervision, and that the same is true and correct to the best of my knowledge and belief.

Date Surveyed

11/21/91

Signature & Seal of Professional Surveyor

JOHN JAQUSS
NEW MEXICO
6290
SURVEYOR
ENGINEER
BK. 81, 103, 85-67

RECEIVED

Dec 3 1 43 PM '91

UNITED STATES
DEPARTMENT OF JUSTICE

DEC 3 1991

SUPPLEMENTAL DRILLING DATA

COLLINS OIL & GAS CORPORATION
No.1 G. Mattlage Federal
NESW Sec.33-14S-30E
Chaves County, N.M.

NM-31258

The following items supplement Form 3160-3 in accordance with instructions contained in Onshore Oil and Gas Order No.1:

1. SURFACE FORMATION: Quaternary

2. ESTIMATED TOPS OF GEOLOGIC MARKERS:

Rustler	450'	Seven Rivers	1500'
Salt	550'	Queen	2100'
Yates	1400'		

3. ESTIMATED DEPTHS TO WATER, OIL OR GAS FORMATION:

0 - 300': Surface water

2100' - TD: Oil, gas or water

4. PROPOSED CASING PROGRAM:

8-5/8" Casing - 500' of 24#, K-55, ST&C

4-1/2" Casing - 2200' of 9.50#, K-55, ST&C

Both strings of casing will be satisfactorily
tested to ~~1000~~ ¹⁵⁰⁰ psi.

5. PRESSURE CONTROL EQUIPMENT: This well will be drilled with air using a rotating drilling head, rated at 1000# W.P. A blooie line will divert foam and cuttings to the reserve pit. A 1500 psi. working pressure master valve will be used during cable tool drilling.

6. CIRCULATING MEDIUM: This well will be air drilled, using air or foam to circulate the cuttings. The cable tool portion will be drilled using water in the hole.

7. AUXILIARY EQUIPMENT: Not Applicable

RECEIVED

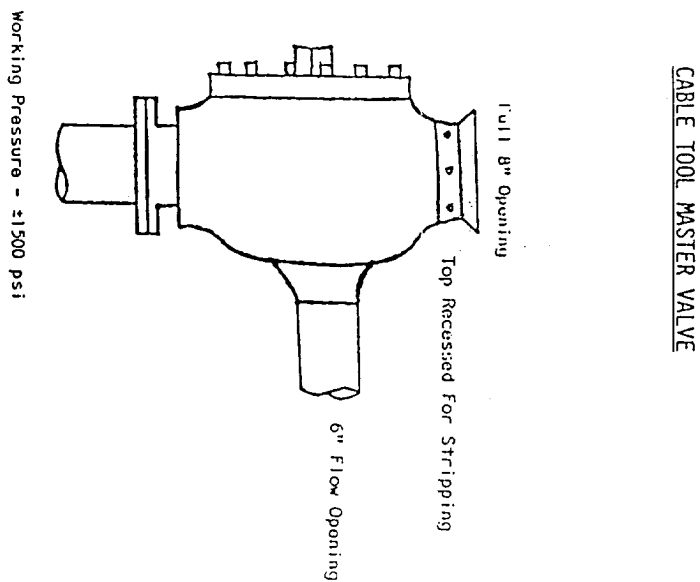
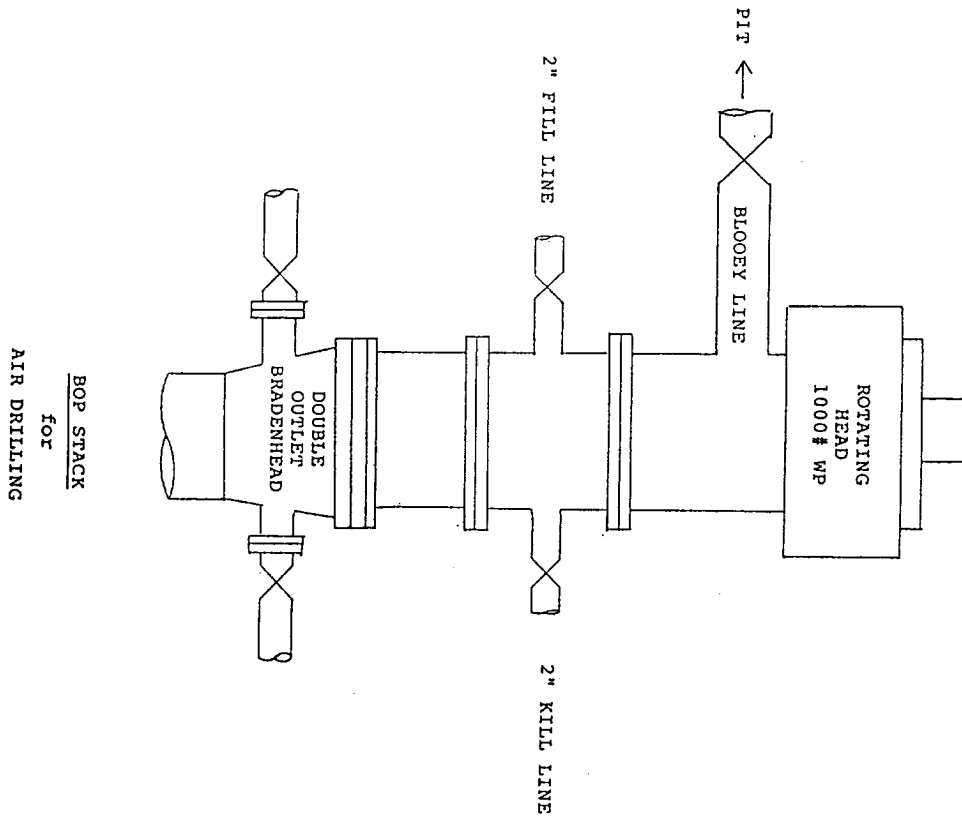
Dec 3 1 46 PM '91

BL
R01
1991
1991

DEC 3 1991

COLLINS OIL & GAS CORPORATION
 No.1 G. Matlage Federal
 NESW Sec.33-14S-30E
 Chaves County, N.M.

NM-31258



Master Valve can be closed to shut off flow from well bore. It can be operated to close top and open flow side. Recessed top opening can be used for stripping.

ספר חסידים

Dec 3 1 45 PM '91

RECEIVED
JAN 10 1967

7-11-92