

UNITED STATES  
DEPARTMENT OF THE INTERIOR  
BUREAU OF LAND MANAGEMENT  
ALBUQUERQUE, NEW MEXICO 88240

APPLICATION FOR PERMIT TO DRILL OR DEEPEN

1a. TYPE OF WORK

DRILL ☒

DEEPEN ☐

b. TYPE OF WELL

OIL  
WELL ☒

GAS  
WELL ☐

OTHER

SINGLE  
ZONE ☐

MULTIPLE  
ZONE ☐

2. NAME OF OPERATOR

Matador Operating Company

3. ADDRESS AND TELEPHONE NO.

415 W. Wall, Ste 1101, Midland, TX 79701, (915) 687-5955

4. LOCATION OF WELL (Report location clearly and in accordance with any State requirements.)\*

At surface

330' FSL, 2200' FEL

At proposed prod. zone

14. DISTANCE IN MILES AND DIRECTION FROM NEAREST TOWN OR POST OFFICE\*

13 miles NE of Loco Hills, NM

15. DISTANCE FROM PROPOSED\*

LOCATION TO NEAREST  
PROPERTY OR LEASE LINE, FT. 330'  
(Also to nearest drlg. unit line, if any)

16. NO. OF ACRES IN LEASE

320

17. NO. OF ACRES ASSIGNED  
TO THIS WELL

40

18. DISTANCE FROM PROPOSED LOCATION\*

TO NEAREST WELL, DRILLING, COMPLETED,  
OR APPLIED FOR, ON THIS LEASE, FT.

19. PROPOSED DEPTH

11,400

20. ROTARY OR CABLE TOOLS

Rotary

21. ELEVATIONS (Show whether DF, RT, GR, etc.)

3981' GL

22. APPROX. DATE WORK WILL START\*

as soon as possible

23.

PROPOSED CASING AND CEMENTING PROGRAM

SIZE OF HOLE	GRADE, SIZE OF CASING	WEIGHT PER FOOT	SETTING DEPTH	QUANTITY OF CEMENT
17-1/2	13-3/8, H-40	48#	475'	See below
12-1/4	8-5/8, J-55	24# & 32#	3000'	See below
7-7/8	5-1/2, N-80	17# & 20#	11,400'	See below

- 13-3/8" csg: 230 sx Class C, 4% gel, 2% CaCl<sub>2</sub>, 200 sx Class C, 2% CaCl<sub>2</sub>.
- 8-5/8" csg: 650 sx Class C, 35/65 poz, 6% gel, 8#/sk salt, 1/4#/ck Flocele  
200 sx Class C.
- 5-1/2" csg: 100 sx Class C, 35/65 poz, 6% gel, 280 sx Class C, 50 /50 poz,  
2% gel, 5#/sk salt, .5% Halad 322

PLEASE BE ADVISED THAT THERE WILL BE NO EXCAVATION  
OF FEDERALLY OWNED MINERAL SURFACE FOR CONSTRUCTION  
OF THE ACCESS ROAD OR PAD WITHOUT PAYMENT  
IN ADVANCE.

IN ABOVE SPACE DESCRIBE PROPOSED PROGRAM: If proposal is to deepen, give data on present productive zone and proposed new productive zone. If proposal is to drill, deepen directionally, give pertinent data on subsurface locations and measured and true vertical depths. Give blowout preventer program, if any.

24.

SIGNED

*[Signature]*

TITLE

Operations Manager

DATE

2-21-94

(This space for Federal or State office use)

PERMIT NO.

APPROVAL DATE

Application approval does not warrant or certify that the applicant holds legal or equitable title to those rights in the subject lease which would entitle the applicant to conduct operations thereon.

CONDITIONS OF APPROVAL, IF ANY:

APPROVED BY

*[Signature]*

TITLE

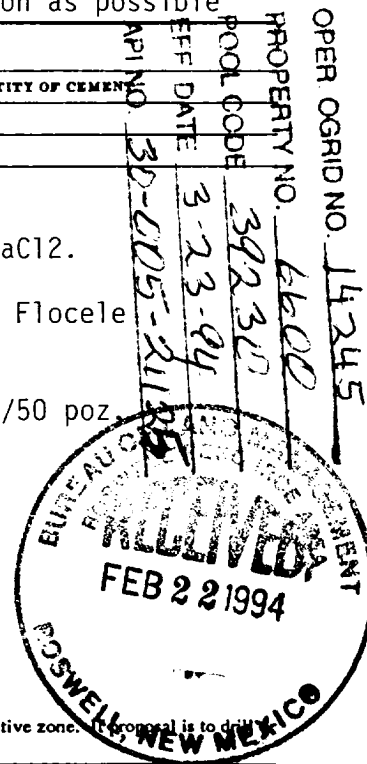
Acting Area Mgr

DATE

3/21/94

\*See Instructions On Reverse Side

Title 18 U.S.C. Section 1001, makes it a crime for any person knowingly and willfully to make to any department or agency of the United States any false, fictitious or fraudulent statements or representations as to any matter within its jurisdiction.



Submit to Appropriate  
District Office  
State Lease - 4 copies  
Fee Lease - 3 copies

State of New Mexico  
Energy, Minerals and Natural Resources Department

Form C-102  
Revised 1-1-89

OIL CONSERVATION DIVISION

DISTRICT I  
P.O. Box 1980, Hobbs, NM 88240

P.O. Box 2088

Santa Fe, New Mexico 87504-2088

DISTRICT II  
P.O. Drawer DD, Artesia, NM 88210

DISTRICT III  
1000 Elia Briscoe Rd., Arton, NM 87410

WELL LOCATION AND ACREAGE DEDICATION PLAT

All Distances must be from the outer boundaries of the section

Operator MATADOR OPERATING CO.			Lease V.G. KINAHAN FEDERAL		Well No. 2
Unit Letter 0	Section 20	Township 15 SOUTH	Range 30 EAST	County NMPM	CHAVES
Actual Footage Location of Well: 330 feet from the SOUTH line and 2200 feet from the EAST line					
Ground Level Elev. 3981'	Producing Formation Devonian		Pool Little Lucky Lake		Dedicated Acreage: 40 Acres

1. Outline the acreage dedicated to the subject well by colored pencil or hatchure marks on the plat below.
2. If more than one lease is dedicated to the well, outline each and identify the ownership thereof (both as to working interest and royalty).
3. If more than one lease of different ownership is dedicated to the well, have the interest of all owners been consolidated by communitization, unitization, force-pooling, etc.?  
☐ Yes ☐ No If answer is "yes" type of consolidation \_\_\_\_\_

If answer is "no" list of owners and tract descriptions which have actually been consolidated. (Use reverse side of this form necessary.) \_\_\_\_\_

No allowable will be assigned to the well unit all interests have been consolidated (by communitization, unitization, forced-pooling, otherwise) or until a non-standard unit, eliminating such interest, has been approved by the Division.

OPERATOR CERTIFICATION

I hereby certify the the information contained herein is true and complete to the best of my knowledge and belief.

Signature

Printed Name  
R. F. Burke

Position  
Operations Manager

Company  
Matador Operating Company

Date  
2-21-94

SURVEYOR CERTIFICATION

I hereby certify that the well location shown on this plat was plotted from field notes of actual surveys made by me or under my supervision, and that the same is true and correct to the best of my knowledge and belief.

Date Surveyed  
FEBRUARY 1, 1994

Signature & Seal of  
Professional Surveyor

Certificate No. 7977  
W. WEST, 876  
RONALD J. EIDSON, 3239  
GARY L. JONES, 7977

94-11-0214

APPLICATION FOR PERMIT TO DRILL  
MATADOR OPERATING CORPORATION  
V. G. Kinahan Federal #2  
330' FSL, 2200' FEL  
Sec. 20-T15S-R30E  
CHAVES COUNTY, NEW MEXICO

In conjunction with Form 3160-3, Application for Permit to Drill, Matador Operating Company submits the following items of pertinent information in accordance with Onshore Oil and Gas Order Nos. 1 & 2, and with all other applicable federal and state regulations.

1. The geologic surface formation is of Permian age.
2. Estimated tops of geologic markers are as follows:

<u>Queen</u>	<u>+ 1,851'</u>	<u>Atoka</u>	<u>- 5,919'</u>
<u>Abo</u>	<u>- 2,459'</u>	<u>Devonian</u>	<u>- 6,969'</u>
<u>Wolfcamp</u>	<u>- 3,719'</u>		

3. The estimated depths at which water, oil, or gas formation are expected to be encountered:

* - water:	<u>150' - 300'</u>		
** - oil or gas:	<u>Queen</u>	<u>2,130'</u>	
	<u>Wolfcamp</u>	<u>7,700'</u>	
	<u>Devonian</u>	<u>10,950'</u>	

\* Ground water to be protected by 13-3/8" surface casing with cement circulated to surface.

\*\* Potentially productive horizons to be protected by 5-1/2" production casing with cement tied back to approximately 9500' on bottom.

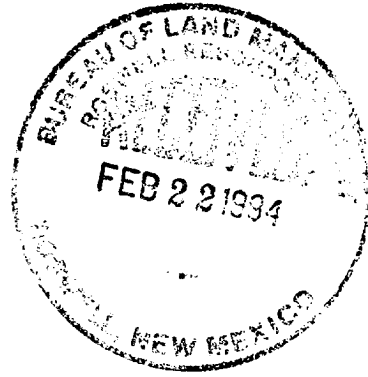
4. Proposed Casing Program: See form 3160-3 and Exhibit D.
5. Pressure Control Equipment: See Exhibit F.
6. Mud Program: See Exhibit E.
7. Auxiliary Equipment: Upper Kelly Cock, Lower Kelly Cock, Full Opening Stabbing Valve, Flow Sensor, PVT.
8. Testing, Logging, and Coring Programs
  - DST's: Possible in Devonian.
  - Logging: 1-man mud logging unit from 7,600' to TD.

RECEIVED

MAR 22 1994

JOHN HODDS  
OFFICE

APPLICATION FOR PERMIT TO DRILL  
MATADOR OPERATING CORPORATION  
V. G. Kinahan Federal #2  
330' FSL, 2200' FEL  
Sec. 20-T15S-R30E  
CHAVES COUNTY, NEW MEXICO



- Electric Logs: Dual Induction Laterolog  
Neutron Density Porosity Log  
Gamma Ray/Caliper Log

No coring is anticipated.

9. Abnormal Pressures, Temperatures, or other Hazards:

- No abnormal pressures, temperatures or hazards  
are anticipated in the drilling of this well.

10. Anticipated Starting Date: ASAP.

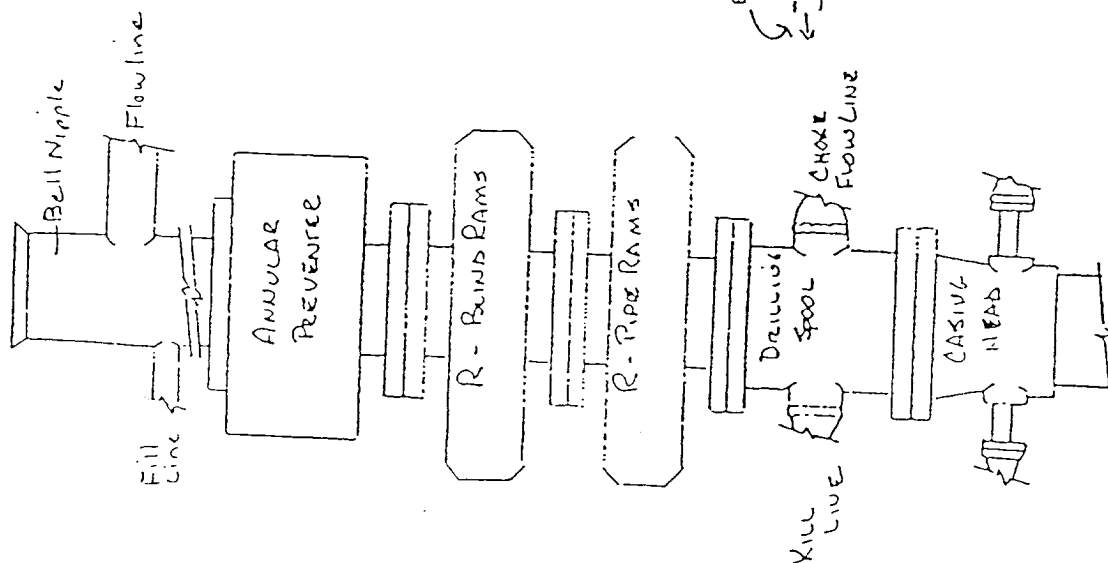
RECEIVED

MAR 22 1994

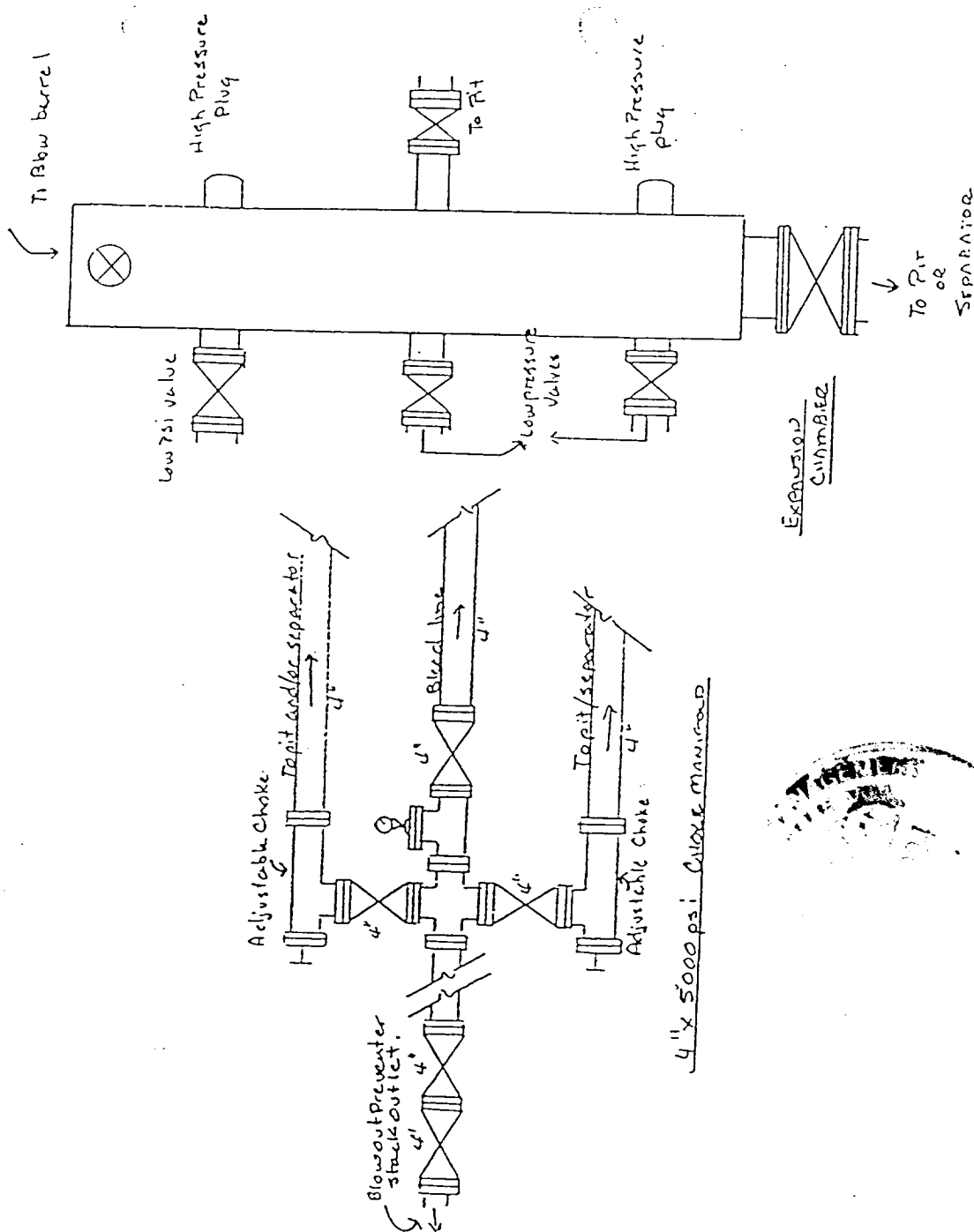
OFFICE

MATADOR OPERATING COMPANY  
 V. G. Kinahan Fed #2  
 330' FSL, 2200' FEL  
 Sec. 20-T15S-R30E  
 Chaves County, New Mexico

EXHIBIT "F"  
 BLOWOUT PREVENTER



5000 PSI  
 WORKING PRESSURE



**RECEIVED**

MAR 22 1994

FOR HODDER  
OFFICE