

DISTRICT I  
P. O. Box 1980, Hobbs, NM 88240

DISTRICT II  
P. O. Drawer DD, Artesia, NM 88210

DISTRICT III  
1000 Rio Brazos Rd., Aztec, NM 87410

DISTRICT IV  
P. O. Box 2088, Santa Fe, NM 87504-2088

State of New Mexico  
Energy, Minerals and Natural Resources Department

OIL CONSERVATION DIVISION  
PO Box 2088  
Santa Fe, NM 87504-2088

Form C-102  
Revised February 10, 1994

Instructions on back

Submit to Appropriate District Office

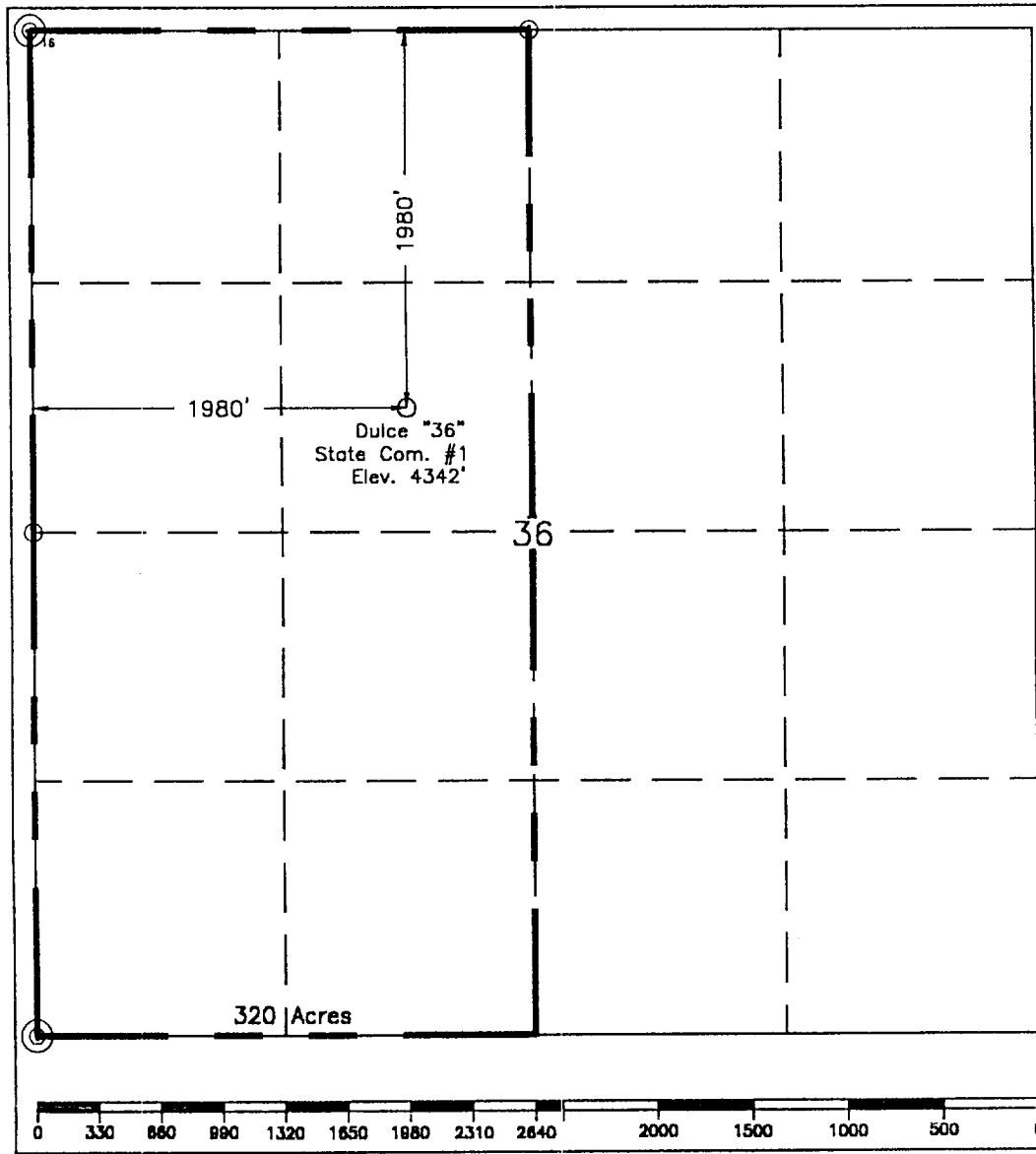
State Lease-4 copies  
Fee Lease-3 copies

☐ AMENDED REPORT

WELL LOCATION AND ACREAGE DEDICATION PLAT

1 API Number 30-005-21160		2 Pool Code 97085		3 Pool Name Wildcat Undesignated, Morrow (Gas)					
4 Property Code		5 Property Name Dulce "36" State Com.				6 Well Number 1			
7 OGRID No. 22351		8 Operator Name TEXACO EXPLORATION & PRODUCTION, INC.				9 Elevation 4342'			
10 Surface Location									
UL or lot no. F	Section 36	Township 15-S	Range 31-E	Lot Idn	Feet from the 1980'	North/South line North	Feet from the 1980'	East/West line West	County Chaves
11 Bottom Hole Location If Different From Surface									
UL or lot no.	Section	Township	Range	Lot Idn	Feet from the	North/South line	Feet from the	East/West line	County
12 Dedicated Acres 320		13 Joint or Infill		14 Consolidation Code		15 Order No.			

NO ALLOWABLE WILL BE ASSIGNED TO THIS COMPLETION UNTIL ALL INTERESTS HAVE BEEN CONSOLIDATED  
OR A NON-STANDARD UNIT HAS BEEN APPROVED BY THE DIVISION.



16 OPERATOR CERTIFICATION	
I hereby certify that the information contained herein is true and complete to the best of my knowledge and belief.	
Signature	<i>A. Phil Ryan</i>
Printed Name	A. Phil Ryan
Position	Commissioner Coordinator
Company	Texaco Expl. & Prod. Inc.
Date	June 6, 2000
17 SURVEYOR CERTIFICATION	
I hereby certify that the well location shown on this plat was plotted from field notes of actual surveys made by me or under my supervision, and that the same is true and correct to the best of my knowledge and belief.	
Date Surveyed	June 5, 2000
Signature & Seal of Professional Surveyor	<i>John S. Piper</i>
Certificate No.	7254 John S. Piper
Sheet	

○ = Staked Location ● = Producing Well ➤ = Injection Well ◇ = Water Supply Well ⊕ = Plugged & Abandon Well  
⊙ = Found Section Corner, 2 or 3" Iron Pipe & GLO B.C. ○ = Found 1/4 Section Corner, 1" Iron Pipe & GLO B.C.

ADDITIONAL INFORMATION ON THE LOCATION

State Plane Coordinates			
Northing 718628.54 (1927= 718563.25)		Easting 711870.812 (1927= 670692.96)	
Latitude 32°58'27.40"		Longitude 103°46'38.09"	
Zone	North American Datum	Combined Grid Factor	Coordinate File
1st	1983	0.99994239	Texmack6.cr5
ing File	Field Book		
-Chaves_36	Chaves County #1, Pg. 4		

