

District I
1625 N. French Dr., Hobbs, NM 88240
District II
1301 W. Grand Avenue, Artesia, NM 88210
District III
1000 Rio Brazos Road, Aztec, NM 87410
District IV
1220 S. St. Francis Dr., Santa Fe, NM 87505

State of New Mexico
Energy Minerals and Natural Resources

Form C-101
Revised March 17, 1999

Oil Conservation Division
1220 South St. Francis Dr.
Santa Fe, NM 87505

Submit to appropriate District Office
State Lease - 6 Copies
Fee Lease - 5 Copies

☐ AMENDED REPORT

APPLICATION FOR PERMIT TO DRILL, RE-ENTER, DEEPEN, PLUGBACK, OR ADD A ZONE

¹ Operator Name and Address BRECK OPERATING CORP. P.O. Box 911, Breckenridge, Texas 76424 (254) 559-3355		² OGRID Number 002799
³ Property Code 29769	⁵ Property Name Tobac State	⁶ Well No. 1

⁷ Surface Location									
UL or lot no.	Section	Township	Range	Lot Idn	Feet from the	North/South line	Feet from the	East/West line	County
J	30	8S	33E		1980	South	2130	East	Chaves

⁸ Proposed Bottom Hole Location If Different From Surface									
UL or lot no.	Section	Township	Range	Lot Idn	Feet from the	North/South line	Feet from the	East/West line	County
⁹ Proposed Pool 1 Upper Tobac Penn					¹⁰ Proposed Pool 2				

¹¹ Work Type Code N	¹² Well Type Code O	¹³ Cable/Rotary R	¹⁴ Lease Type Code S	¹⁵ Ground Level Elevation
¹⁶ Multiple No	¹⁷ Proposed Depth 9300	¹⁸ Formation Penn	¹⁹ Contractor Unknown	²⁰ Spud Date 8-15-2002

²¹ Proposed Casing and Cement Program					
Hole Size	Casing Size	Casing weight/foot	Setting Depth	Sacks of Cement	Estimated TOC
17-1/2	13-3/8	54.5	400	400	Surf
11	8-5/8	32	3800	550	Surf
7-7/8	5-1/2	15.5-20#	9300	1000	3600'

²² Describe the proposed program. If this application is to DEEPEN or PLUG BACK, give the data on the present productive zone and proposed new productive zone.

Describe the blowout prevention program, if any. Use additional sheets if necessary.

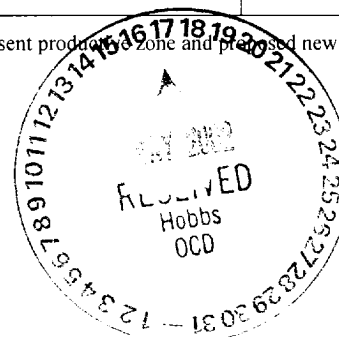
Set 40' of 20" conductor pipe & ready mix to surface.

Drill 17-1/2" hole to 400'. Set 13-3/8" csg & cmt w/400 sxs to surface.

Drill 11" Hole to 3800'. Set 8-5/8 csg & cmt w/550 sxs to surface.

Drill 7-7/8" Hole to 9500'. Set 5-1/2" csg & cmt w/1000 sxs to 3600'.

Perforate & stimulate Penn based on log analysis.



²³ I hereby certify that the information given above is true and complete to the best of my knowledge and belief. Signature: <i>Donald R Craig</i> Printed name: DONALD R. CRAIG Title: DISTRICT ENGINEER Date: May 13, 2002		OIL CONSERVATION DIVISION Approved by: ORIGINAL SIGNED BY PAUL F. KAUTZ Title: MAY 22 2002 PETROLEUM ENGINEER Approval Date: Expiration Date: Conditions of Approval: Attached <input type="checkbox"/>	
---	--	---	--

Permit Expires 1 Year From Approval
Date Unless Drilling Underway

DISTRICT I
P.O. Box 1990, Hobbs, NM 88241-1990

State of New Mexico
Energy, Minerals and Natural Resources Department

Form C-102
Revised February 10, 1994
Submit to Appropriate District Office
State Lease - 4 Copies
Fee Lease - 3 Copies

DISTRICT II
P.O. Drawer DD, Artesia, NM 88211-0719

DISTRICT III
1000 Rio Brazos Rd., Aztec, NM 87410

DISTRICT IV
P.O. BOX 2088, SANTA FE, N.M. 87504-2088

OIL CONSERVATION DIVISION
P.O. Box 2088
Santa Fe, New Mexico 87504-2088

☐ AMENDED REPORT

WELL LOCATION AND ACREAGE DEDICATION PLAT

API Number 30-005-21172	Pool Code 59350	Pool Name Tobac; Upper Penit
Property Code 29769	Property Name TOBAC STATE	Well Number 1
OGRID No. 2799	Operator Name BRECK OPERATING CORPORATION	Elevation 4394'

Surface Location

UL or lot No.	Section	Township	Range	Lot Idn	Feet from the	North/South line	Feet from the	East/West line	County
J	30	8-S	33-E		1980	SOUTH	2130	EAST	CHAVES

Bottom Hole Location If Different From Surface

UL or lot No.	Section	Township	Range	Lot Idn	Feet from the	North/South line	Feet from the	East/West line	County
Dedicated Acres 80	Joint or Infill	Consolidation Code	Order No.						

NO ALLOWABLE WILL BE ASSIGNED TO THIS COMPLETION UNTIL ALL INTERESTS HAVE BEEN CONSOLIDATED
OR A NON-STANDARD UNIT HAS BEEN APPROVED BY THE DIVISION

LOT 1									
38.44 AC LOT 2									
38.52 AC LOT 3									
38.60 AC LOT 4									
38.68 AC									

Diagram showing well location and acreage dedication plat. The plat is divided into four lots (LOT 1, LOT 2, LOT 3, LOT 4) and a fifth lot (38.68 AC). The well location is marked with a circle and labeled '2130'' and '1980''.

OPERATOR CERTIFICATION

I hereby certify the the information
contained herein is true and complete to the
best of my knowledge and belief.

Donald R Craig
Signature

Donald R. Craig
Printed Name
District Engineer

Title
May 13, 2002
Date

SURVEYOR CERTIFICATION

I hereby certify that the well location shown
on this plat was plotted from field notes of
actual surveys made by me or under my
supervision, and that the same is true and
correct to the best of my belief.

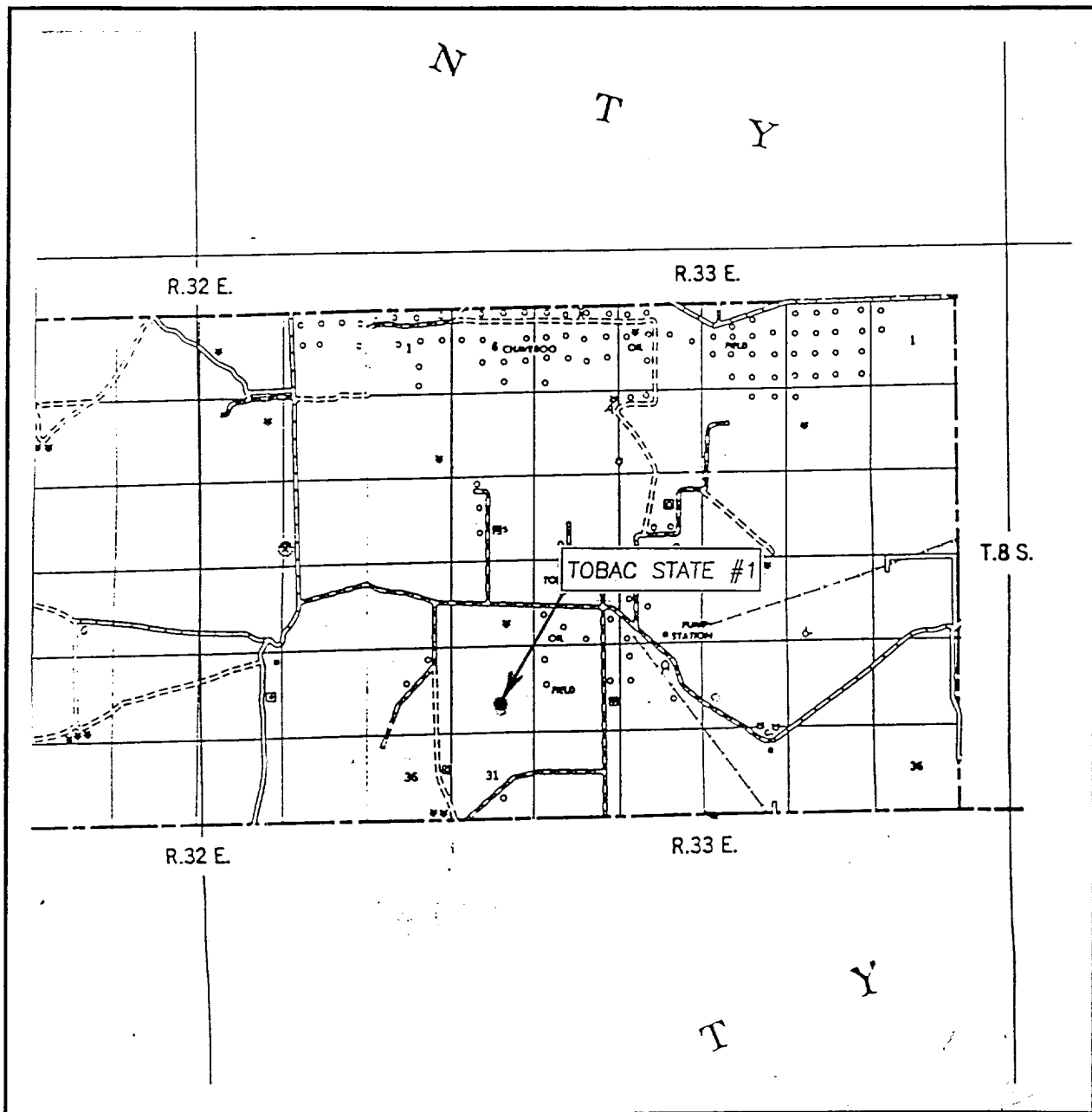
MAY 8, 2002

Date Surveyed
Signature & Seal of
Professional Surveyor

Donald R. Eidson
02.11.0328

Certificate No. RONALD R. EIDSON 3239
GARY EIDSON 12641

VICINITY MAP



SCALE: 1" = 2 MILES

SEC. 30 TWP. 8-S RGE. 33-E

SURVEY N.M.P.M.

COUNTY CHAVES

DESCRIPTION 1980' FSL & 2130' FEL

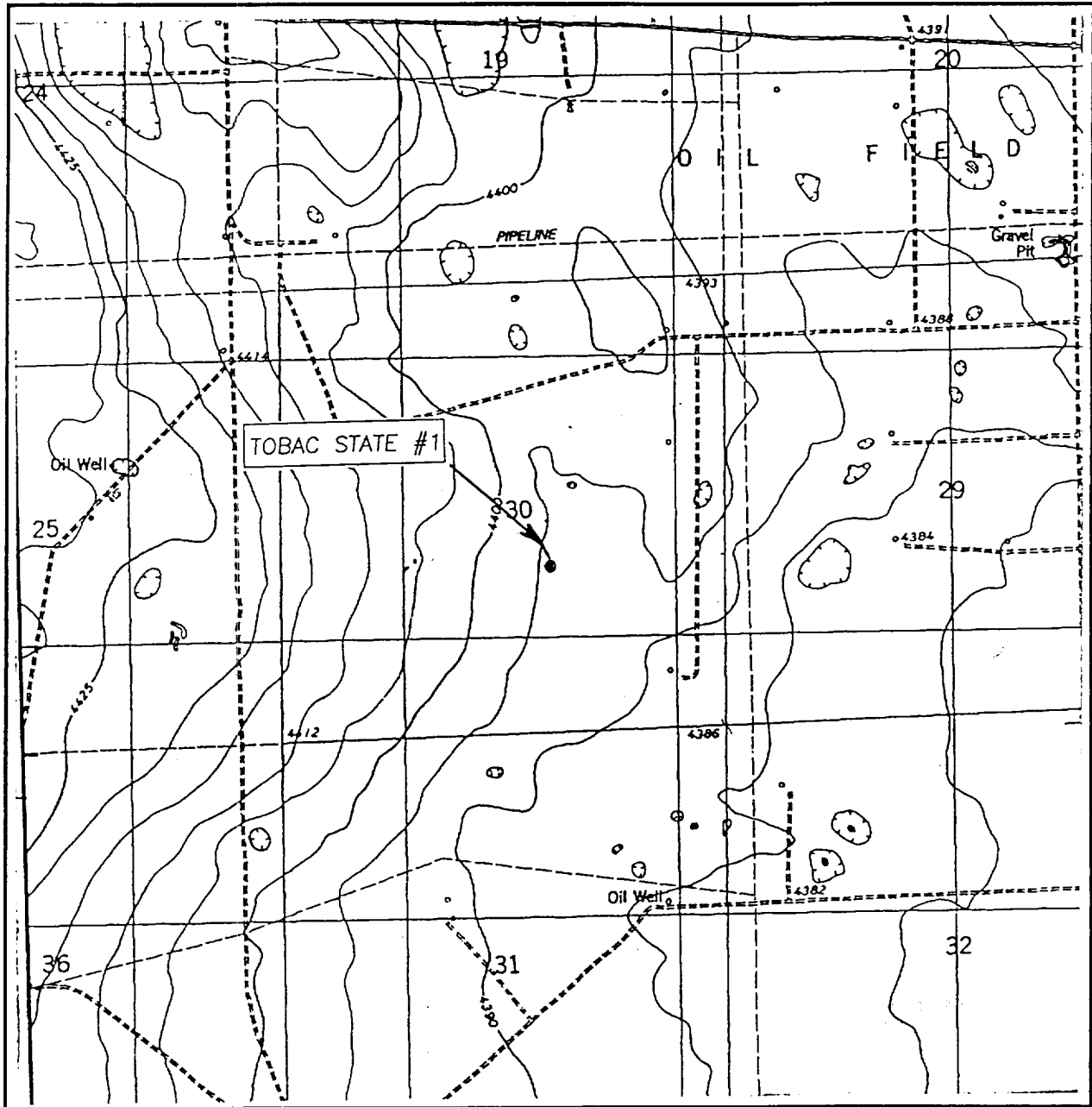
ELEVATION 4394'

OPERATOR BRECK OPERATING CORPORATION

LEASE TOBAC STATE

JOHN WEST SURVEYING
HOBBS, NEW MEXICO
(505) 393-3117

LOCATION VERIFICATION MAP



SCALE: 1" = 2000'

CONTOUR INTERVAL: 5'
FLYING M RANCH, N.M.

SEC. 30 TWP. 8-S RGE. 33-E

SURVEY _____ N.M.P.M.

COUNTY CHAVES

DESCRIPTION 1980' FSL & 2130' FEL

ELEVATION 4394'

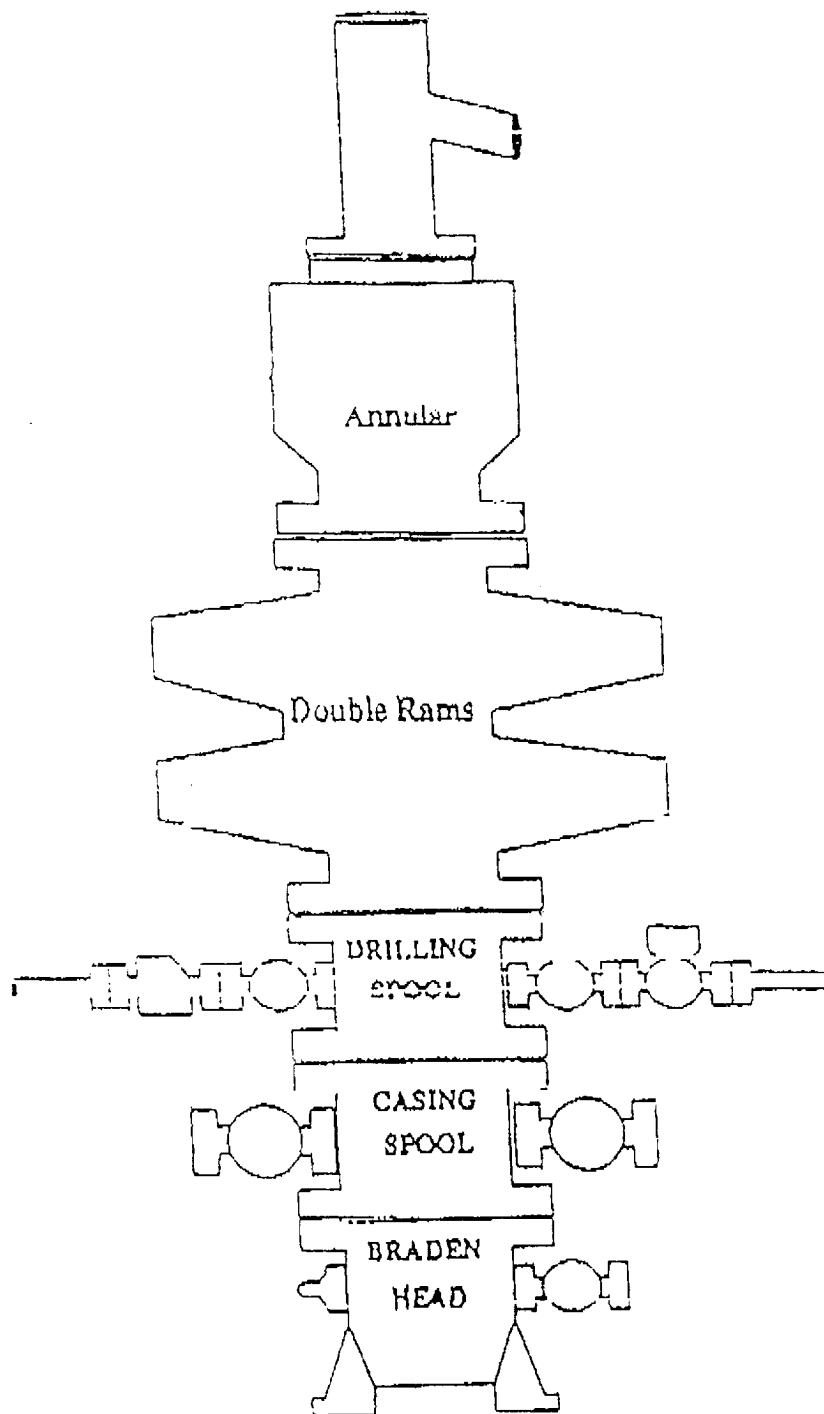
OPERATOR BRECK OPERATING CORPORATION

LEASE TOBAC STATE

U.S.G.S. TOPOGRAPHIC MAP

FLYING M RANCH, N.M.

JOHN WEST SURVEYING
HOBBS, NEW MEXICO
(505) 393-3117



ELF 2/30/01
ABOVE DATE DOES NOT
INDICATE WHEN
CONFIDENTIAL LOGS
WILL BE RELEASED