

NEW MEXICO OIL CONSERVATION COMMISSION  
Santa Fe, New Mexico

NOTICE OF INTENTION TO DRILL OR RECOMPLETE

Notice must be given to the District Office of the Oil Conservation Commission and approval obtained before drilling or recompletion begins. If changes in the proposed plan are considered advisable, a copy of this notice showing such changes will be returned to the sender. Submit this notice in QUINTUPPLICATE. One copy will be returned following approval. See additional instructions in Rules and Regulations of the Commission.

Midland, Texas  
(Place)

July 20, 1954  
(Date)

OIL CONSERVATION COMMISSION  
SANTA FE, NEW MEXICO

Gentlemen:

You are hereby notified that it is our intention to commence the (Drilling) (Recompletion) of a well to be known as

The Superior Oil Company  
(Company or Operator)

State

Well No. 1-335, in J. The well is

(Lease)

(Unit)

located 1980 feet from the South line and 1980 feet from the

East

line of Section 19, T. 13-S, R. 32-E, NMPM.

(GIVE LOCATION FROM SECTION LINE)

Wildcat

Pool, Lea

County

If State Land the Oil and Gas Lease is No. E-8005

If patented land the owner is

Address

We propose to drill well with drilling equipment as follows: Rotary Rig

The status of plugging bond is OK

Drilling Contractor Unknown at this time

We intend to complete this well in the Will test all zones to Ellenburger formation at an approximate depth of 13,000 feet.

CASING PROGRAM

We propose to use the following strings of Casing and to cement them as indicated:

Size of Hole	Size of Casing	Weight per Foot	New or Second Hand	Depth	Sacks Cement
17 1/2"	13-3/8"	48 1/2	New	350	Cement to Surface
12 1/2"	9-5/8"	36 1/2	New	3700	4000
8-3/4"	7"	26 1/2	New	13,000	750

If changes in the above plans become advisable we will notify you immediately.

ADDITIONAL INFORMATION (If recompletion give full details of proposed plan of work.)

Approved JUL 16 1954, 19  
Except as follows:

OIL CONSERVATION COMMISSION  
By L. G. Stanley  
Engineer District 1  
Title

Sincerely yours,

The Superior Oil Company  
By J. E. Speers (J. E. Speers)

Position Petroleum Engineer  
Send Communications regarding well to

Name J. E. Speers  
Address The Superior Oil Company  
Midland, Texas

W. W. STUDDERT

MEMBER  
AMERICAN SOCIETY OF  
CIVIL ENGINEERS

REGISTERED ENGINEERS  
& LAND SURVEYORS

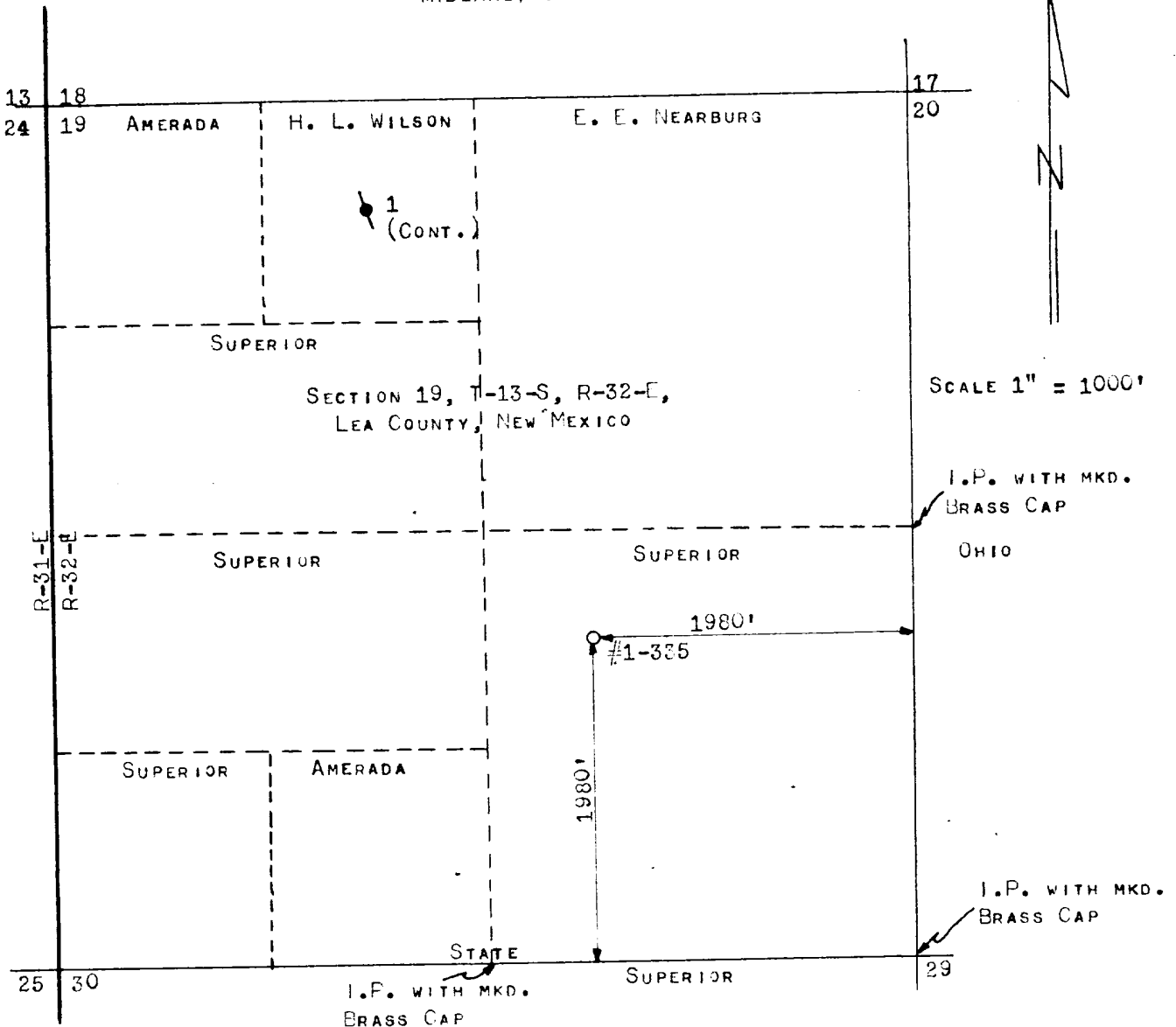
ARIZONA  
COLORADO  
IDAHO  
LOUISIANA  
MONTANA  
NEVADA  
NEW MEXICO  
OKLAHOMA  
TEXAS  
UTAH  
WYOMING

# STUDDERT ENGINEERING CO.

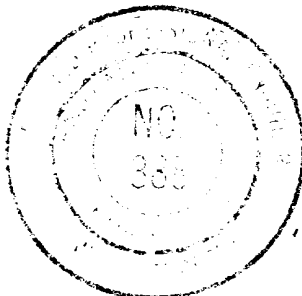
CIVIL ENGINEERS

TELEPHONES 4 8682 & 2-1373

221 SOUTH COLORADO  
MIDLAND, TEXAS



I, W. W. STUDDERT, REGISTERED PROFESSIONAL ENGINEER AND LAND SURVEYOR,  
NO. 388, STATE OF NEW MEXICO, HEREBY CERTIFY THAT THIS WELL LOCATION:  
SUPERIOR OIL CO. - STATE #1-335, 1980' FROM THE SOUTH AND EAST LINES  
OF SEC. 19, T-13-S, R-32-E, LEA COUNTY, NEW MEXICO, WAS STAKED ON THE  
GROUND UNDER MY SUPERVISION AND THAT THIS PLAT IS TRUE AND CORRECT.  
JULY 20, 1954



*W. W. Studdert*  
W. W. STUDDERT