

NEW MEXICO OIL CONSERVATION COMMISSION
Santa Fe, New Mexico

NOTICE OF INTENTION TO DRILL OR RECOMPLETE

Notice must be given to the District Office of the Oil Conservation Commission and approval obtained before drilling or recompletion begins. If changes in the proposed plan are considered advisable, a copy of this notice showing such changes will be returned to the sender. Submit this notice in QUINTUPLICATE. One copy will be returned following approval. See additional instructions in Rules and Regulations of the Commission.

Midland, Texas
(Place)

February 23, 1956
(Date)

OIL CONSERVATION COMMISSION
SANTA FE, NEW MEXICO

Gentlemen:

You are hereby notified that it is our intention to commence the (Drilling) (~~RECOMPLETION~~) of a well to be known as

The Superior Oil Company
(Company or Operator)

State "315" Well No. 1-315, in B The well is
(Lease) located 660 feet from the North line and 1900 feet from the East line of Section 30, T. 13N, R. 30E, NMPM.
(GIVE LOCATION FROM SECTION LINE) Caprock Queen Pool, Lea County

D	C	B X	A
E	F	G	H
L	K	J	I
M	N	O	P

If State Land the Oil and Gas Lease is No. E-7494

If patented land the owner is

Address
We propose to drill well with drilling equipment as follows: Rotary Rig

The status of plugging bond is Active

Drilling Contractor Western Drilling Company
Box 1426

Olcese, Texas
We intend to complete this well in the Queen sand formation at an approximate depth of 3100 feet.

CASING PROGRAM

We propose to use the following strings of Casing and to cement them as indicated:

Size of Hole	Size of Casing	Weight per Foot	New or Second Hand	Depth	Sacks Cement
12-1/4"	9-5/8"	32 1/2	New	375	250
8-3/4"	7"	22 1/2	New	3070	150

If changes in the above plans become advisable we will notify you immediately.

ADDITIONAL INFORMATION (If recompletion give full details of proposed plan of work.)

Approved....., 19.....
Except as follows:

OIL CONSERVATION COMMISSION

Engineer District VI

Sincerely yours,

THE SUPERIOR OIL COMPANY

By: D. H. Collins, Jr.
(Company or Operator)

Position: Petroleum Engineer

Send Communications regarding well to

Name: J. E. Deahy

Address: Midland, Texas

W. W. STUDDERT
MEMBER
AMERICAN SOCIETY OF
CIVIL ENGINEERS

REGISTERED ENGINEERS
& LAND SURVEYORS

ARIZONA
COLORADO
IDAHO
LOUISIANA
MONTANA
NEVADA
NEW MEXICO
OKLAHOMA
TEXAS
UTAH
WYOMING

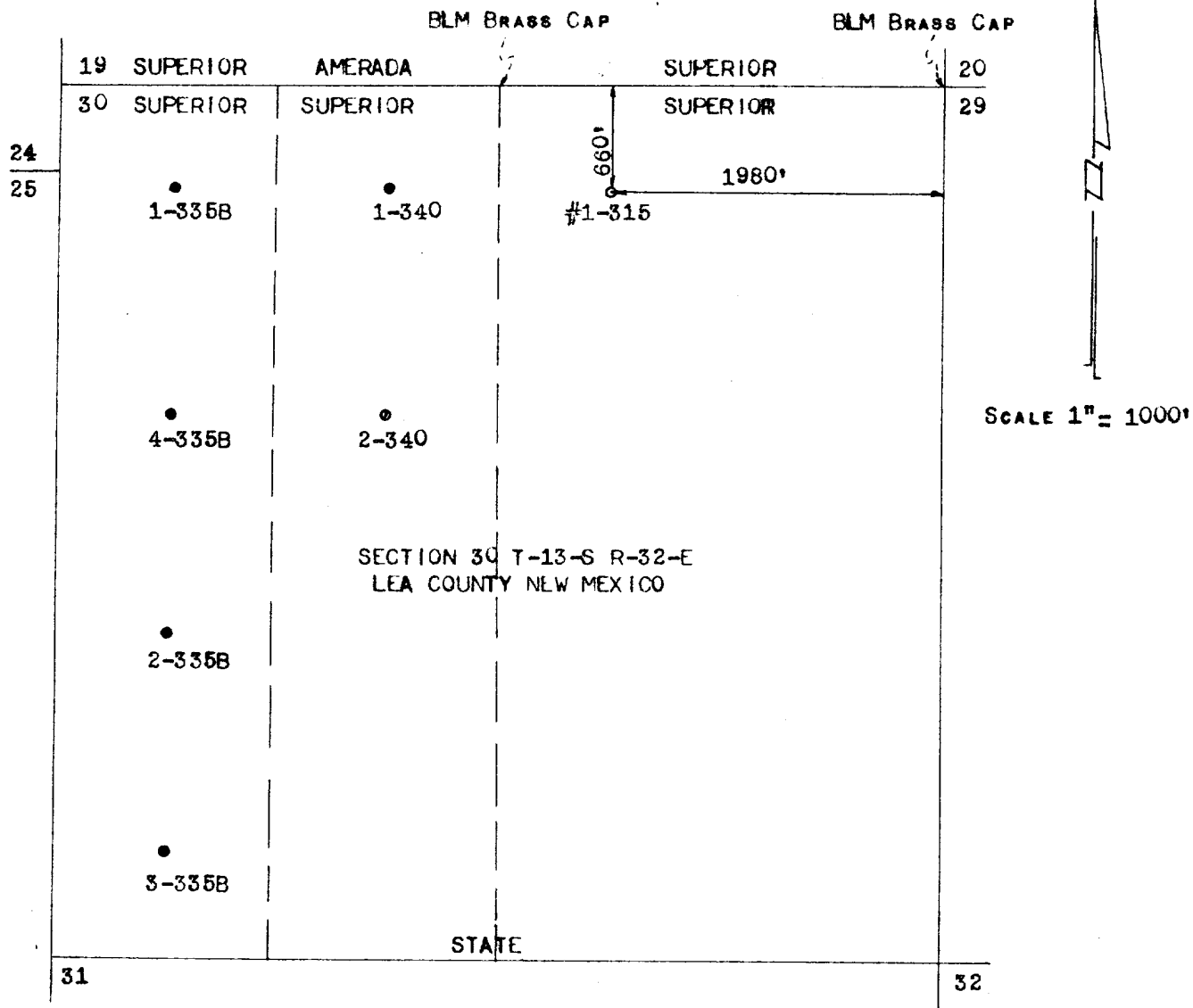
STUDDERT ENGINEERING CO.

CIVIL ENGINEERS

TELEPHONES 4-8682 & 2-1373

221 SOUTH COLORADO

MIDLAND, TEXAS



EARL K MONTEITH, REGISTERED LAND SURVEYOR #1317 STATE OF NEW MEXICO HEREBY CERTIFIES THAT THIS WELL LOCATION WAS STAKED ON THE GROUND UNDER HIS SUPERVISION AND THAT THIS PLAT IS TRUE AND CORRECT.

Earl K. Monteith
EARL K MONTEITH

FEBRUARY 23, 1956



NEW MEXICO
OIL CONSERVATION COMMISSION

Form C-128

Well Location and/or Gas Proration Plat

Date 2-23-56

Operator The Superior Oil Company Lease State "315"

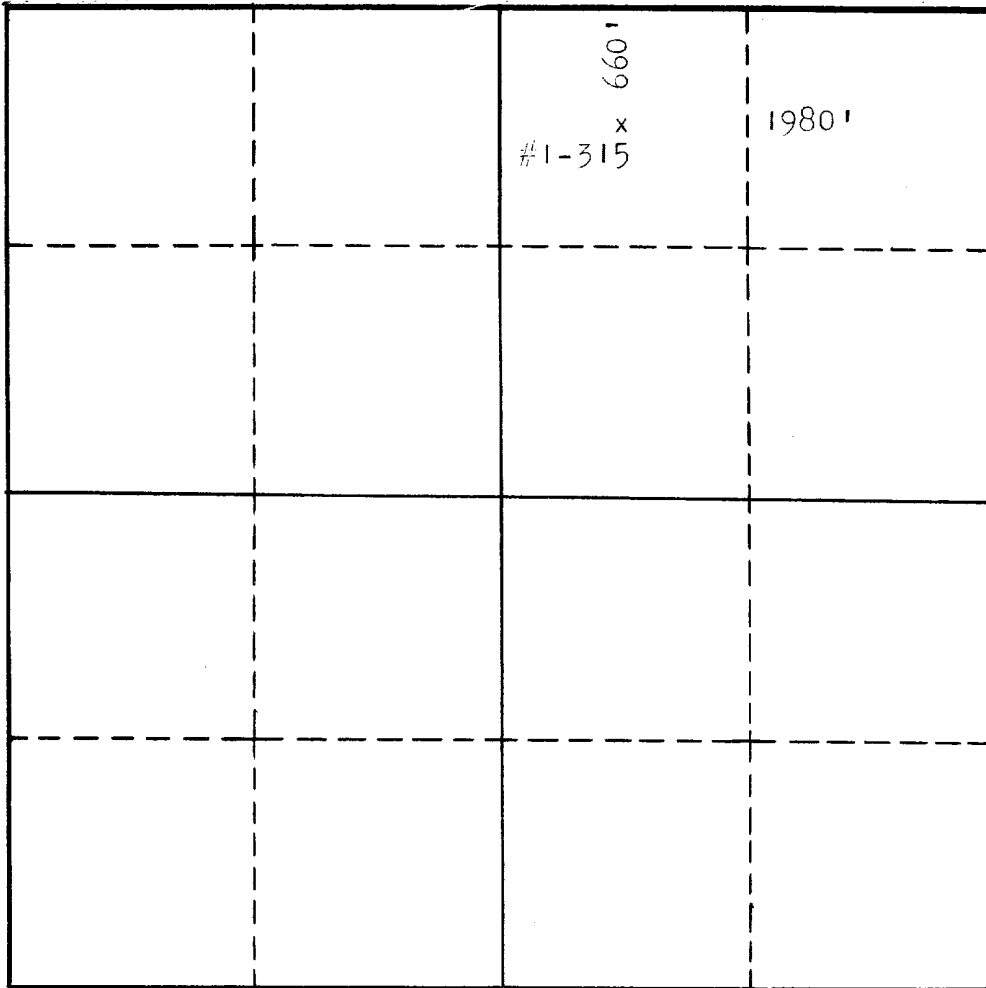
Well No. #1-315 Section 30 Township 13-S Range 32-E 30 NMPM

Located 660' Feet From NORTH Line, 1980' Feet From EAST Line,

LEA COUNTY County, New Mexico. G. L. Elevation 4380' KB (Estimated)

Name of Producing Formation Queen sand Pool Caprock Queen Dedicated Acreage 40 acres

(Note: All distances must be from outer boundaries of Section)



SCALE: 1"=1000'

1. Is this Well a Dual Comp. ? Yes No X.
2. If the answer to Question 1 is yes, are there any other dually completed wells within the dedicated acreage? Yes No .

Name D. H. Collins Jr. D.H. Collins, Jr.
Position Petroleum Engineer
Representing The Superior Oil Company
Address Midland, Texas

This is to certify that the above plat was prepared from field notes of actual surveys made by me or under my supervision and that the same are true and correct to the best of my knowledge and belief.

Date Surveyed 2/23/56
Earl H. Montalbano #1317
Registered Professional Engineer and/or
Land Surveyor

