

NEW MEXICO OIL CONSERVATION COMMISSION
Santa Fe, New Mexico

NOTICE OF INTENTION TO DRILL OR RECOMPLETE

Notice must be given to the District Office of the Oil Conservation Commission and approval obtained before drilling or recompletion begins. If changes in the proposed plan are considered advisable, a copy of this notice showing such changes will be returned to the sender. Submit this notice in QUINTUPPLICATE. One copy will be returned following approval. See additional instructions in Rules and Regulations of the Commission.

Midland, Texas
(Place)

February 8, 1956
(Date)

OIL CONSERVATION COMMISSION
SANTA FE, NEW MEXICO

Gentlemen:

You are hereby notified that it is our intention to commence the (Drilling) (~~Recompletion~~) of a well to be known as

Great Western Drilling Company

(Company or Operator)

State "X"
(Lease)

, Well No. 1, in D. The well is

located 330 feet from the North line and 330 feet from the

West line of Section 31, T. -13-S, R. 32-E, NMPM.

(GIVE LOCATION FROM SECTION LINE)

Carrack Queen

Pool, Lea County

UNDESIGNATED E-2217
If State Land the Oil and Gas Lease is No.

If patented land the owner is.

Address.

We propose to drill well with drilling equipment as follows: Rotary to 3000'

3000-3050 w/cable tools.

The status of plugging bond is. Blanket bond filed.

Drilling Contractor Pioneer Well Services

We intend to complete this well in the Queen Sand formation at an approximate depth of 3050 feet.

CASING PROGRAM

We propose to use the following strings of Casing and to cement them as indicated:

Size of Hole	Size of Casing	Weight per Foot	New or Second Hand	Depth	Sacks Cement
12 1/4"	8 5/8	24#	New	300	20
7 7/8"	5 1/2	14#	New	3000	100

If changes in the above plans become advisable we will notify you immediately.

ADDITIONAL INFORMATION (If recompletion give full details of proposed plan of work.)

We plan to fracture the well with approximately 7500 gallons oil and 15,000# sand.

Approved....., 19.....
Except as follows:

Sincerely yours,

Great Western Drilling Company

(Company or Operator)

By M. B. Wilson

Position Chief Petroleum Engineer

Send Communications regarding well to

Name Great Western Drilling Company

Address Box 1659

Midland, Texas

OIL CONSERVATION COMMISSION

By M. L. Lundy

Title

NEW MEXICO
OIL CONSERVATION COMMISSION

Form C-128

Well Location and/or Gas Proration Plat

Date January 27, 1956

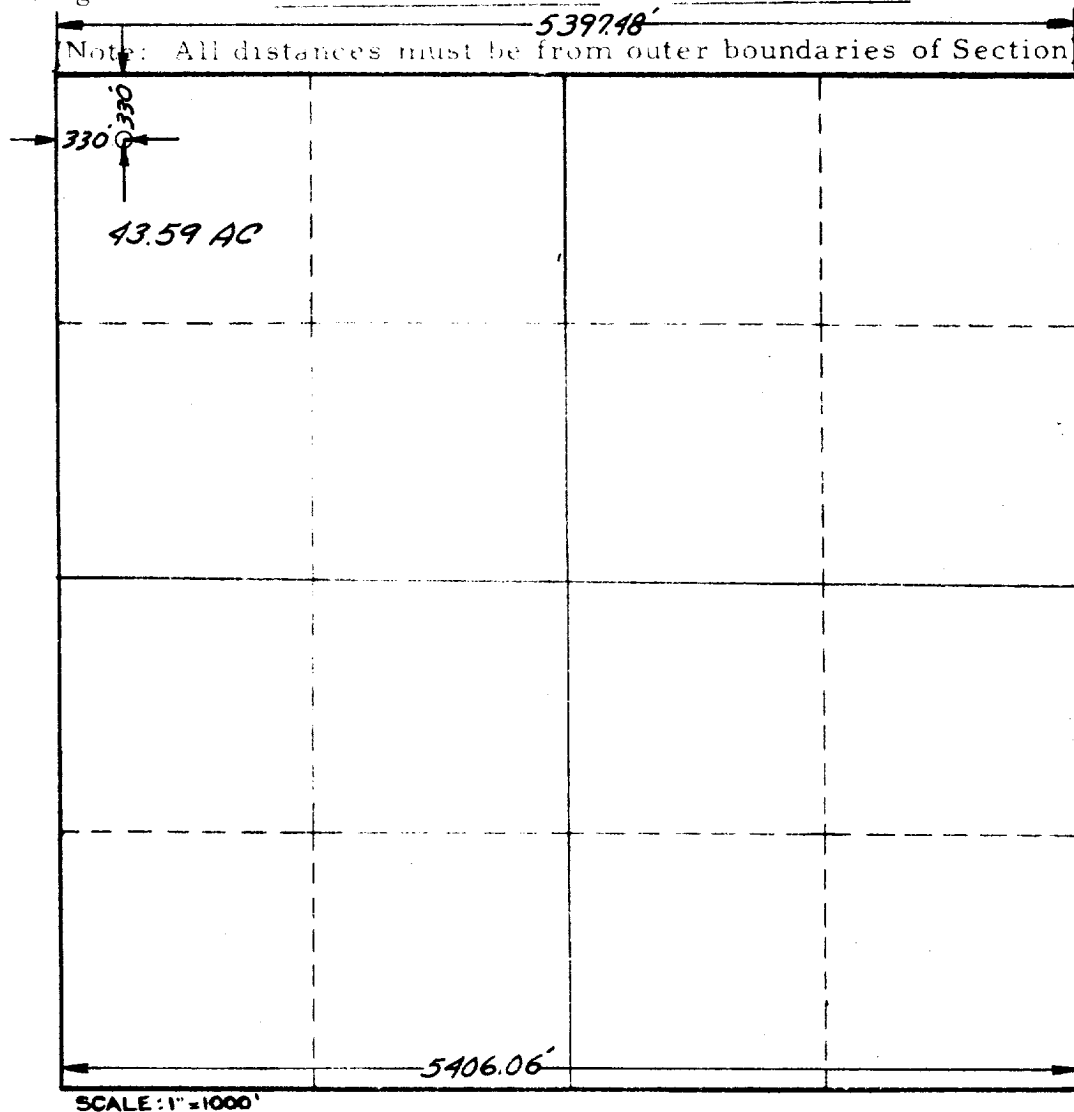
Operator Great Western Drilling Company Lease State "X"

Well No. 1 Section 31 Township 13 S Range 32 E NMPM

Located 330 Feet From North Line, 330 Feet From West Line,

Lea County, New Mexico. G. L. Elevation 4377.6

Name of Producing Formation _____ Pool _____ Dedicated Acreage _____



1. Is this Well a Dual Comp.? Yes No

2. If the answer to Question 1 is yes, are there any other dually completed wells within the dedicated acreage? Yes No

This is to certify that the above plat was prepared from field notes of actual surveys made by me or under my supervision and that the same are true and correct to the best of my knowledge and belief.

Name H. B. Wilson
Position Chief Petroleum Engineer
Representing Great Western Drilling Company
Address Box 1659, Midland, Texas

Date Surveyed January 27, 1956
John W. West
Registered Professional Engineer and/or
Land Surveyor

676