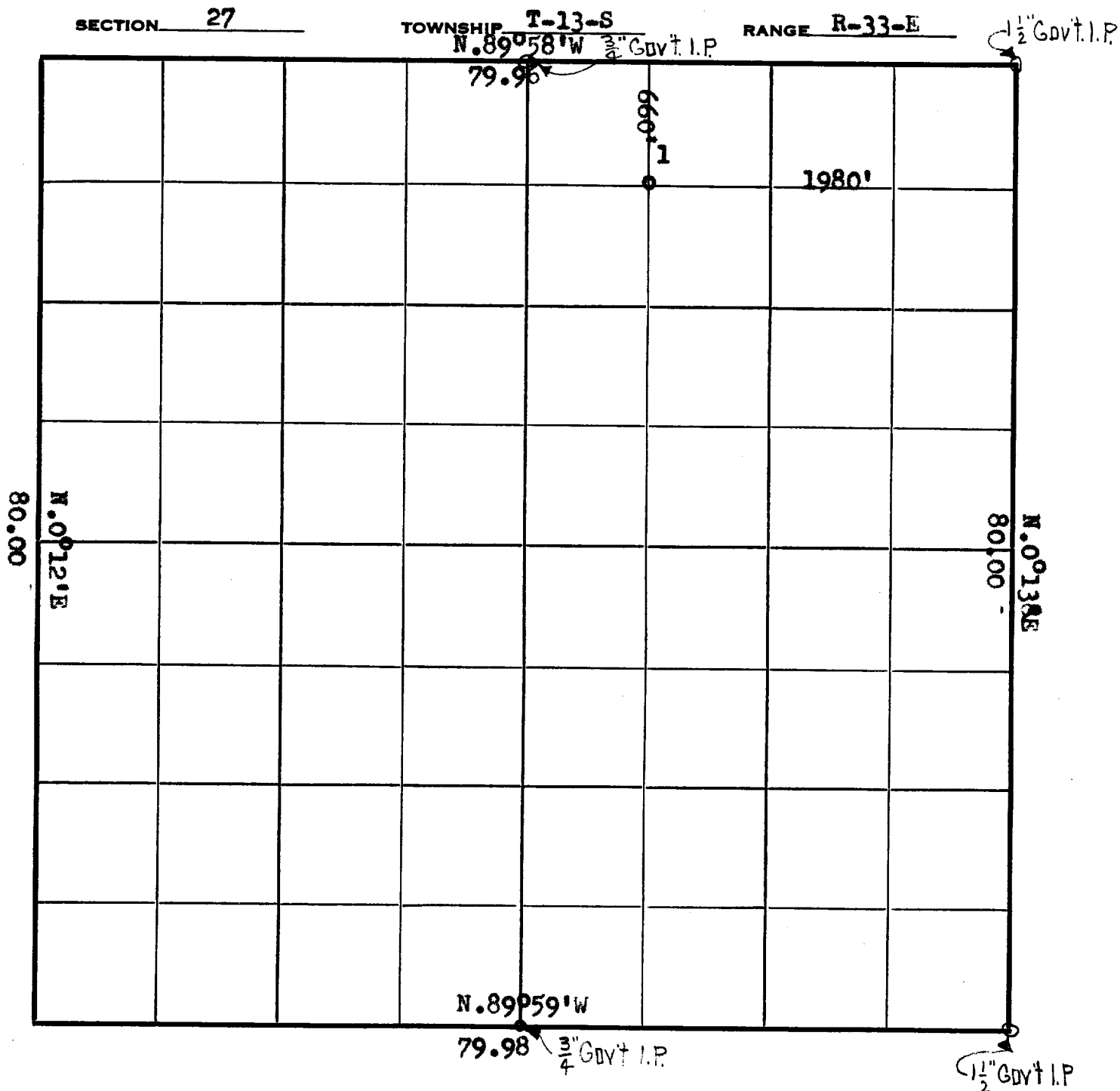


# SECTION PLAT

GULF FW 636

SCALE 1 IN. = 800 FT.

This Plat exhibits the exact location of Gulf Oil Corporation's No. 1  
Lea-State "BS" in Sec. 27 Twnsp T-13-S Range R-33-E



This is to certify that I am a Registered Land Surveyor, that the above plat was prepared under my direction and that the same is true and correct to the best of my knowledge and belief.

J. A. Teague  
 J. A. Teague

